

Linear

TANA 504 Fixture Guide

KKDÖ

Indoor | Surface | Mid output up to 960lm/m (293lm/ft)

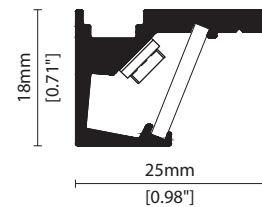


Key applications

- ✓ Cabinet/Furniture
- ✓ Display case
- ✓ Interior
- ✓ Retail display
- ✓ Shelving display
- ✓ Under cabinet

Key features

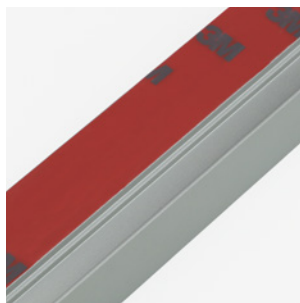
- ✓ Custom lengths
- ✓ Diffusion: Spotting
- ✓ Extensive CCT range
- ✓ Form factor: Medium
- ✓ IP40
- ✓ Output mid



FIXING METHODS



SF Screw fixing



TF 3M tape fixing



MF Magnet fixing

Linear

TANA 504

Specification sheet



Dimension	H18/W25/L120-2020mm (H0.71/W0.98/L4.72-79.53in)
PCB increment	100mm increment/2000mm max (3.94in increment/78.74in max)
LED pitch	16.7mm - 60LED/m (0.66in - 18LED/ft)
Chip	s/e-line Toyoda Gosei k-line Toyoda Gosei or Equivalent
Beam angle	90° (Clear Cover 45°) / 50° (Clear Cover 5°) / 110° (Diffused Cover)
Colours	s/e-line 1900K/2100K/2300K/2500K/2700K/3000K/3500K/4000K/5000K s-line Single colours: Red/Green/Blue/Orange/Amber k-line 1900K/2100K/2300K/2500K/2700K/3000K/3500K/4000K/5000K
Bin/Step	s-line 2-step MacAdam ellipse e/k-line 3-step MacAdam ellipse
CRI	≥ 90
Lifetime	50,000 hours @ 25°C (50,000 hours @ 77°F)
Operating temp	T _a = -25 to 60°C (T _c max = 77°C) T _a = -13 to 140°F (T _c max = 170.6°F)
IP rating	IP40
Finish	Silver anodised
Cover/lens	Clear/Diffused
Mounting	Surface mounting via screw fixing, 3M tape or magnets
Power feed	Hardwire tails or male/female connectors
Control	0-10V/1-10V/DMX/DALI



LED Grading Key

Exclusive Grade

s s-line*	*KKDC tuned CCT range
e e-line*	3-step CCT range

Base Grade

k k-line	3-step commercial range Energy Star CCTs
-----------------	---

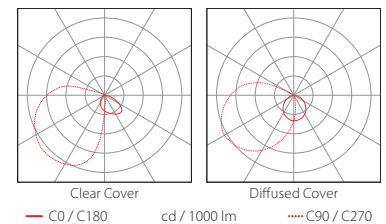
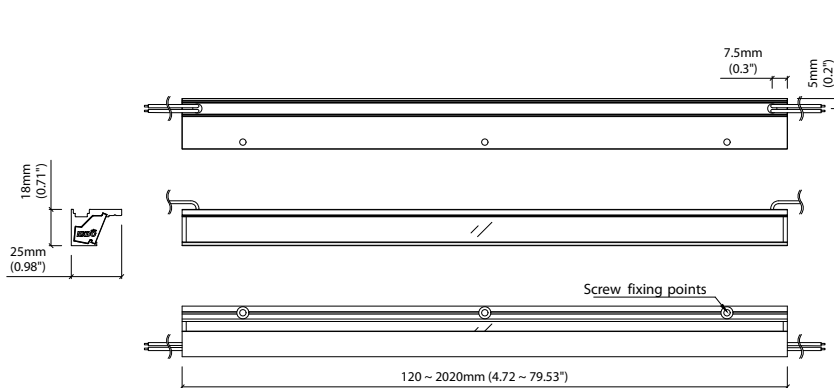
PERFORMANCE DATA @ 3000K

Power consumption	Supply voltage	Supply current
12.5W/m (3.81W/ft)	24V DC	0.52A/m (0.16A/ft)

Colour Rendering Index (CRI)

	R1	R2	R3	R4	R5	R6	R7	R8	R9	R10	R11	R12	R13	R14
k-line	94	97	98	93	93	96	92	83	60	93	94	82	95	99

	Clear Cover	Diffused Cover	CRI	R9	Rf	Rg
s/e-line	960lm/m (293lm/ft) 77lm/W	730lm/m (223lm/ft) 58lm/W	92	50	-	-
k-line	830lm/m (253lm/ft) 66.3lm/W	630lm/m (192lm/ft) 50lm/W	92	60	-	-



Data derived from independent UKAS / IESNA LM-79-08 accredited testing of production samples.

TANA 504

Length Availability List

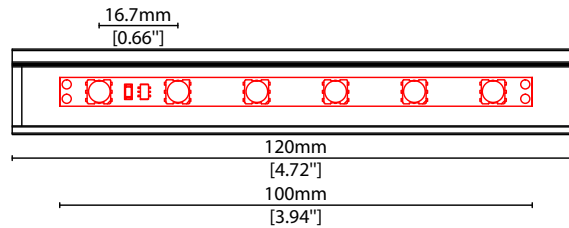


Length Code		Fixture Length ¹		LED Strip ²		End Cap Dimension ³		Wattage (W)	Output (lm)	
Metric	Imperial(US)	Metric	Imperial(US)	Metric	Imperial(US)	Metric	Imperial(US)		3000K (Test Data)	Range Data
m0120	i0005	120mm	4.72in	100mm	3.94in	0mm	0.00in	1.25	96	50-100
m0220	i0009	220mm	8.66in	200mm	7.87in	0mm	0.00in	2.50	193	100-200
m0320	i0013	320mm	12.60in	300mm	11.81in	0mm	0.00in	3.75	289	150-300
m0420	i0017	420mm	16.54in	400mm	15.75in	0mm	0.00in	5.00	385	200-400
m0520	i0020	520mm	20.47in	500mm	19.69in	0mm	0.00in	6.25	481	250-501
m0620	i0024	620mm	24.41in	600mm	23.62in	0mm	0.00in	7.50	578	300-601
m0720	i0028	720mm	28.35in	700mm	27.56in	0mm	0.00in	8.75	674	350-701
m0820	i0032	820mm	32.28in	800mm	31.50in	0mm	0.00in	10.00	770	400-801
m0920	i0036	920mm	36.22in	900mm	35.43in	0mm	0.00in	11.25	866	450-901
m1020	i0040	1020mm	40.16in	1000mm	39.37in	0mm	0.00in	12.50	963	500-1001
m1120	i0044	1120mm	44.09in	1100mm	43.31in	0mm	0.00in	13.75	1059	550-1101
m1220	i0048	1220mm	48.03in	1200mm	47.24in	0mm	0.00in	15.00	1155	600-1201
m1320	i0052	1320mm	51.97in	1300mm	51.18in	0mm	0.00in	16.25	1251	650-1301
m1420	i0056	1420mm	55.91in	1400mm	55.12in	0mm	0.00in	17.50	1348	700-1401
m1520	i0060	1520mm	59.84in	1500mm	59.06in	0mm	0.00in	18.75	1444	750-1502
m1620	i0064	1620mm	63.78in	1600mm	62.99in	0mm	0.00in	20.00	1540	800-1602
m1720	i0068	1720mm	67.72in	1700mm	66.93in	0mm	0.00in	21.25	1636	850-1702
m1820	i0072	1820mm	71.65in	1800mm	70.87in	0mm	0.00in	22.50	1733	900-1802
m1920	i0076	1920mm	75.59in	1900mm	74.80in	0mm	0.00in	23.75	1829	950-1902
m2020	i0080	2020mm	79.53in	2000mm	78.74in	0mm	0.00in	25.00	1925	1000-2002

¹ Actual total overall length of light fixture (LED strip + end caps + void/wire hole)

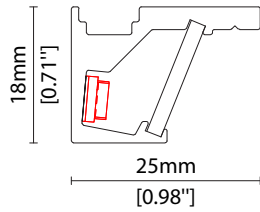
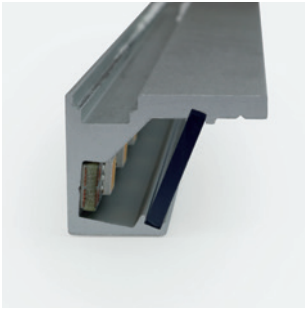
² Actual length of PCB strip

³ Actual length of 2x end caps

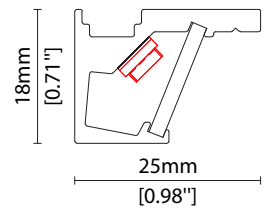
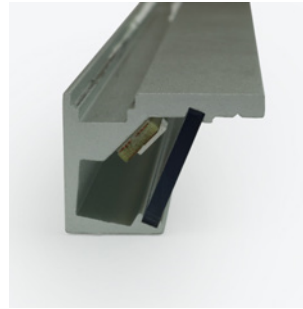


LED POSITION OPTIONS

* Options are an integral part of the fixture ordering codes. Please refer to **Code Table** pages.

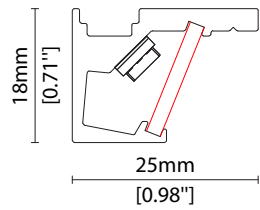
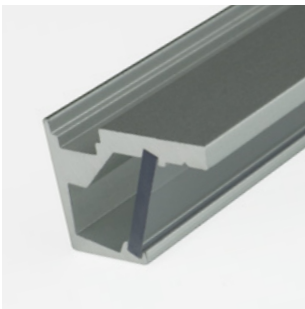


05 5° LED position

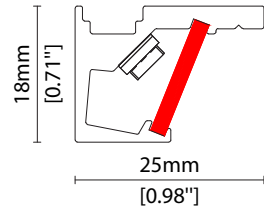
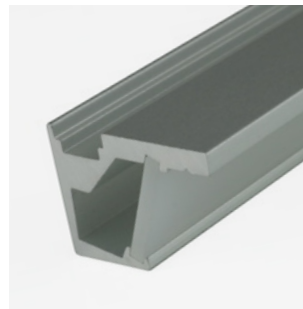


45 45° LED position

COVER OPTIONS

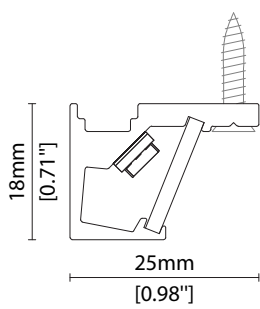


B Clear cover
Polycarbonate

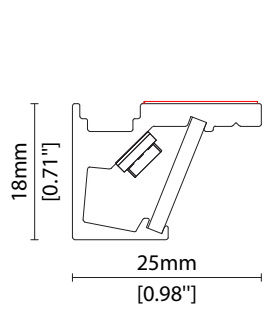
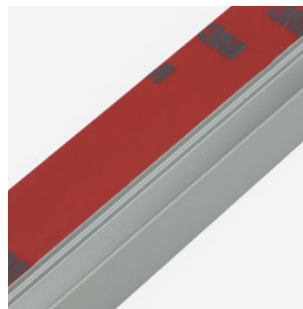


C Diffused cover
Polycarbonate

FIXING OPTIONS

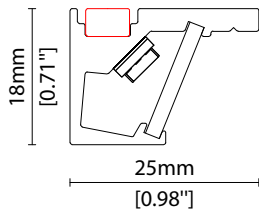


SF Screw fixing



TF 3M tape fixing

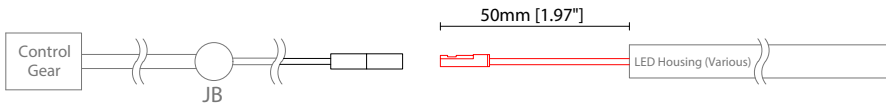
FIXING OPTIONS (CONTINUED)



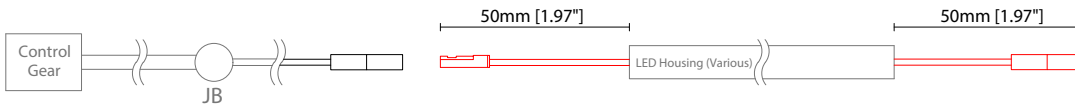
MF Magnet fixing

POWER FEED OPTIONS

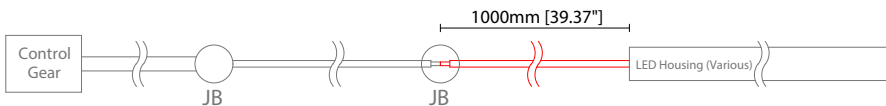
0050 S20X 50mm (1.97") Single IP20 connector



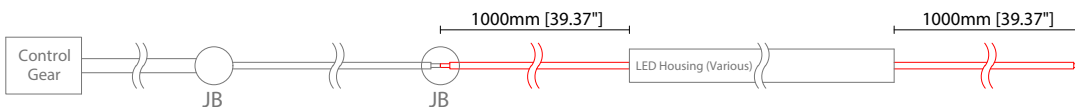
0050 D20X 50mm (1.97") Double IP20 connector



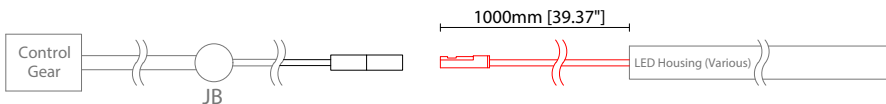
1000 S00X 1000mm (39.37") Single tail



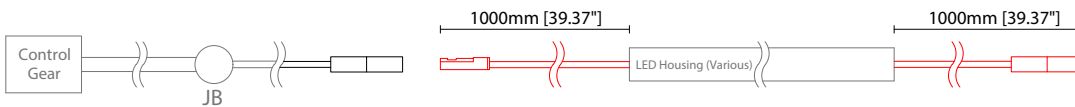
1000 D00X 1000mm (39.37") Double tail



1000 S20X 1000mm (39.37") Single IP20 connector



1000 D20X 1000mm (39.37") Double IP20 connector

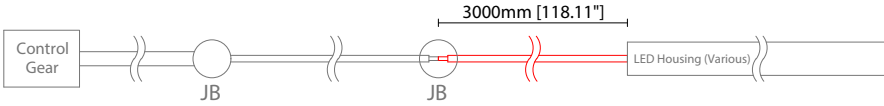


Key

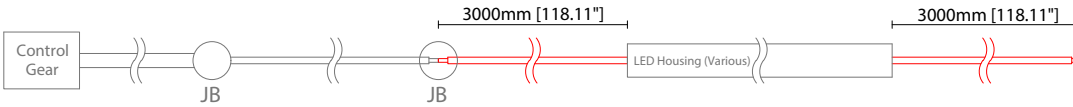
- Control Gear Power supply, sub-controllers & control systems
- JB Junction box / cable connection

POWER FEED OPTIONS (CONTINUED)

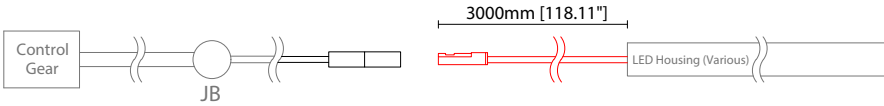
3000 S00X 3000mm (118.11") Single tail



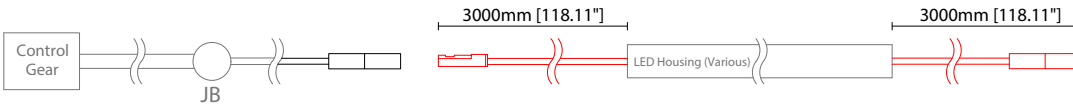
3000 D00X 3000mm (118.11") Double tail



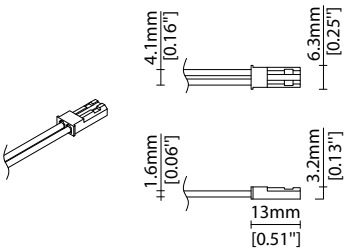
3000 S20X 3000mm (118.11") Single IP20 connector



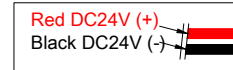
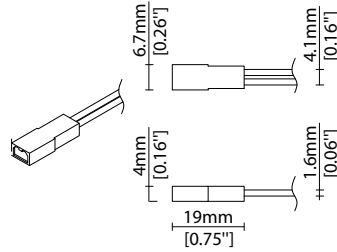
3000 D20X 3000mm (118.11") Double IP20 connector



JST 2 Pin Female Connector



JST 2 Pin Male Connector

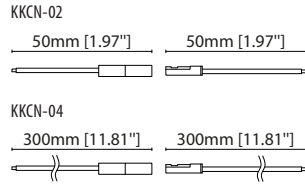
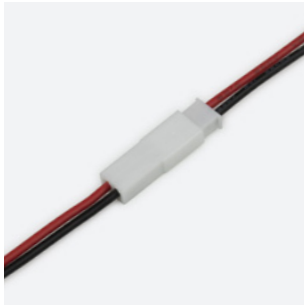


Key

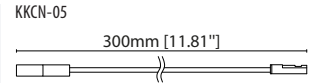
- Control Gear Power supply, sub-controllers & control systems
- JB Junction box / cable connection

POWER FEED

Note: Accessories are to be ordered separately with corresponding code shown below.



KKCN-02 50mm (1.97in) pair
KKCN-04 300mm (11.81in) pair
2 PIN male + female JST connector set



KKCN-05
2 PIN 300mm (11.81in) extension lead (JST)

KKDC CONTROL



IP20
Plastic housing
L170/W59/H29mm
(L6.69/W2.32/H1.14in)

KKDM-06 1-10V
visDIM dimmable sub-controller
(4 x 8A max @ 12-36V)



IP20
Plastic housing
L170/W53.4/H28mm
(L6.69/W2.10/H1.10in)

KKSC-05 DMX
visDIM dimmable sub-controller
(4 x 5A max @ 12-36V)



IP20
Plastic housing
L170/W59/H29mm
(L6.69/W2.32/H1.14in)

KKDL-02 DALI
visDIM dimmable sub-controller
(4 x 8A max @ 12-36V)



IP20
Plastic housing
L166/W53.4/H23mm
(L6.54/W2.10/H0.91in)

KKDL-03 DALI
visDIM dimmable sub-controller
(4 x 5A max @ 12-36V)

AVAILABLE PSU OPTIONS

Control Mode	PSU (Order Code)	Input Voltage AC	Output Voltage DC	Rated Output Current	Rated Power	Dim %	IP Rating
Switched	CEN-60-24	90-295V	24V	2.5A	60W	-	IP67
	HLG-60H-24	90-305V	24V	2.5A	60W	-	IP67
	HLG-100H-24	90-305V	24V	4.0A	100W	-	IP67
	HLG-150H-24	90-305V	24V	6.3A	150W	-	IP67
	HLG-240H-24	90-305V	24V	10A	240W	-	IP67
0-10V (1-10V)	PWM-40-24	90-305V	24V	1.67A	40W	100-0.15 (100-10)	IP67
	PWM-60-24	90-305V	24V	2.5A	60W	100-0.15 (100-10)	IP67
	PWM-90-24	90-305V	24V	3.67A	90W	100-0.15 (100-10)	IP67
	PWM-120-24	90-305V	24V	5.0A	120W	100-0.15 (100-10)	IP67
DALI	LIN100A1	120-277V	24V	1A per channel	100W	100-0.1	IP66/IP40
DMX RGB	LIN100A1	120-277V	24V	1.33A per channel	100W	100-0.1	IP66/IP40
DMX RGBW	LIN100A1	120-277A	24V	1A per channel	100W	100-0.1	IP66/IP40

Flicker Free Options - Combination of PSU+ sub-controller

Control Mode	PSU (Order Code)	Sub-controller (Order Code)	Input Voltage AC	Output Voltage DC	Rated Output Current	Rated Power	Dim %	IP Rating PSU/ Sub-controller
0-10V or 1-10V	CEN-60-24	KKDM-06	90-295V	24V	2.5A	60W	100-0.9	IP67/IP20
	HLG-60H-24	KKDM-06	90-295V	24V	2.5A	60W	100-0.9	IP67/IP20
	HLG-100H-24	KKDM-06	90-295V	24V	4.0A	100W	100-0.9	IP67/IP20
	HLG-150H-24	KKDM-06	90-295V	24V	6.3A	150W	100-0.9	IP67/IP20
	HLG-240H-24	KKDM-06	90-295V	24V	10.0A	240W	100-0.9	IP67/IP20
DALI	CEN-60-24	KKDL-02/03	90-295V	24V	2.5A	60W	100-0.1	IP67/IP20
	HLG-60H-24	KKDL-02/03	90-305V	24V	2.5A	60W	100-0.1	IP67/IP20
	HLG-100H-24	KKDL-02/03	90-305V	24V	4.0A	100W	100-0.1	IP67/IP20
	HLG-150H-24	KKDL-02/03	90-305V	24V	6.3A	150W	100-0.1	IP67/IP20
	HLG-240H-24	KKDL-02/03	90-305V	24V	10.0A	240W	100-0.1	IP67/IP20
DMX RGB	CEN-60-24	KKSC-05	90-295V	24V	2.5A	60W	100-0.9	IP67/IP20
	HLG-60H-24	KKSC-05	90-305V	24V	2.5A	60W	100-0.9	IP67/IP20
	HLG-100H-24	KKSC-05	90-305V	24V	4A	100W	100-0.9	IP67/IP20
	HLG-150H-24	KKSC-05	90-305V	24V	6.3A	150W	100-0.9	IP67/IP20
	HLG-240H-24	KKSC-05	90-305V	24V	10.0A	240W	100-0.9	IP67/IP20

¹ The items shown above cover the most frequently used specification but does not exhaust the possible options

² PSU and/or driver can be chosen from the table, or KKDC may recommend the best option upon receipt of the controls requirement and installation environment

³ Electrical shop drawing will include detailed information of PSU and relevant control drivers

⁴ Cut sheets are available on the controls section of www.kkdc.lighting or upon request