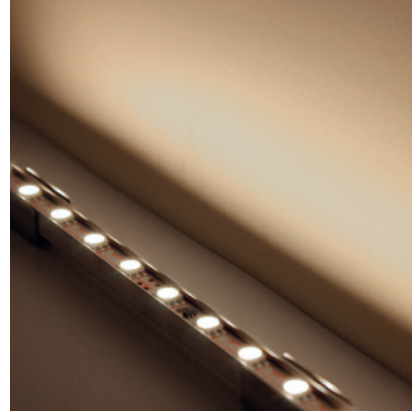


Linear

# TiMi 504 Fixture Guide

# KKDÖ

Indoor | Surface | Mid output up to 1240lm/m (378lm/ft)

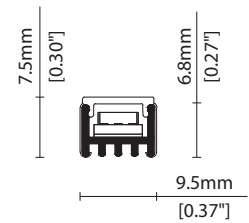


## Key applications

- ✓ Architectural detail
- ✓ Backlighting/Signage
- ✓ Cabinet/Furniture
- ✓ Cove lighting
- ✓ Display case
- ✓ Indirect lighting
- ✓ Interior
- ✓ Mirror back lighting
- ✓ Retail display
- ✓ Shelving display
- ✓ Under bench
- ✓ Under cabinet
- ✓ Wardrobe

## Key features

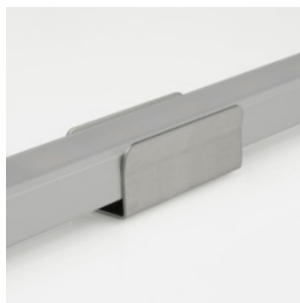
- ✓ Custom lengths
- ✓ Diffusion: Spotting
- ✓ Extensive CCT range
- ✓ Form factor: Micro
- ✓ High lumen efficacy
- ✓ IP20
- ✓ Lensed
- ✓ Output mid



## MOUNTING METHODS



KKCP-13 Lock clip



KKCP-01 Standard clip



KKCP-05 Lens lock clip



Inside lens accessory

Linear

# TiMi 504

## Specification sheet



<b>Dimension</b>	H6.8/W9.5/L114-2014mm (H0.27/W0.37/L4.49-79.29in) (Double tail) H6.8/W9.5/L107-2007mm (H0.27/W0.37/L4.21-79.01in) (Single tail)
<b>PCB increment</b>	100mm increment/2000mm max (3.94in increment/78.74in max)
<b>LED pitch</b>	16.7mm - 60LED/m (0.66in - 18LED/ft)
<b>Chip</b>	<b>s/e-line</b> Toyoda Gosei <b>k-line</b> Toyoda Gosei or Equivalent
<b>Beam angle</b>	120° (No Cover) / 100° (Semi-diffused Cover) / 90° (Black Cover) / 14° or 36° (KKLN-01 Lens)
<b>Colours</b>	<b>s/e-line</b> 1900K/2100K/2300K/2500K/2700K/3000K/3500K/4000K/5000K <b>s-line</b> Single colours: Red/Green/Blue/Orange/Amber <b>k-line</b> 1900K/2100K/2300K/2500K/2700K/3000K/3500K/4000K/5000K
<b>Bin/Step</b>	<b>s-line</b> 2-step MacAdam ellipse <b>e/k-line</b> 3-step MacAdam ellipse
<b>CRI</b>	≥ 90
<b>Lifetime</b>	50,000 hours @ 25°C (50,000 hours @ 77°F)
<b>Operating temp</b>	T <sub>a</sub> = -25 to 50°C (T <sub>c</sub> max = 70°C) T <sub>a</sub> = -13 to 122°F (T <sub>c</sub> max = 158°F)
<b>IP rating</b>	IP20
<b>Finish</b>	Silver anodised
<b>Cover/lens</b>	No Cover/Semi-diffused/14°/36° lens accessory/Black
<b>Mounting</b>	Surface mounting via clips
<b>Power feed</b>	Hardwire tails or male/female connectors
<b>Control</b>	0-10V/1-10V/DMX/DALI (see visDIM range)



### LED Grading Key

#### Exclusive Grade

<b>s</b> s-line*	*KKDC tuned CCT range
<b>e</b> e-line*	2-step CCT range
	3-step CCT range

#### Base Grade

<b>k</b> k-line	3-step commercial range
	Energy Star CCTs

### PERFORMANCE DATA @ 3000K

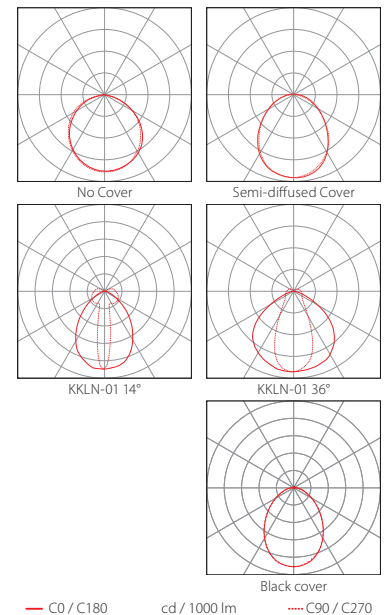
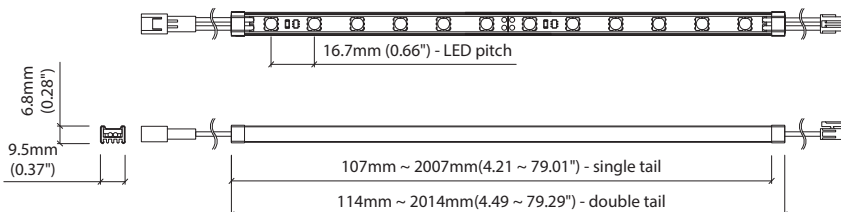
Power consumption	Supply voltage	Supply current
12.5W/m (3.81W/ft)	24V DC	0.52A/m (0.16A/ft)

### Colour Rendering Index (CRI)

	R1	R2	R3	R4	R5	R6	R7	R8	R9	R10	R11	R12	R13	R14
<b>k-line</b>	94	97	98	93	93	96	92	83	60	93	94	82	95	99

	No Cover	Semi-diffused	14° (KKLN-01)	36° (KKLN-01)	Black cover	CRI	R9	Rf	Rg
<b>s/e-line</b>	1240lm/m (378lm/ft) 99lm/W	1040lm/m (317lm/ft) 83lm/W	1120lm/m (341lm/ft) 89.7lm/W	1120lm/m (341lm/ft) 92.6lm/W	315lm/m (96lm/ft) 25lm/w	92	50	88	97
<b>k-line</b>	1090lm/m (332lm/ft) 87.5lm/W	930lm/m (283lm/ft) 74.3lm/W	1000lm/m (305lm/ft) 80lm/W	1000lm/m (305lm/ft) 80lm/W	280lm/m (85lm/ft) 22.4lm/W	92	60	90	100



Data derived from independent UKAS/IESNA LM-79-08 accredited testing of production samples.

See KKDC website for product document updates.

[www.kkdc.lighting](http://www.kkdc.lighting)

TiMi504S-02.04EN-20220721

**FIXTURE**

Model	Finish	Cover/Lens <sup>1</sup>	Grade <sup>2</sup>	LED	Colour (CCT)	Length Availability <sup>3</sup>	IP	Cable Length	Power Feed <sup>4</sup>	Input				
TiMi	TI	Silver Anodised SA	No cover <sup>5</sup>	X	s	504	1900K	19	m 114-2014mm <sup>6</sup> 107-2007mm <sup>7</sup> 100mm increments  i 4.49-79.29in <sup>6</sup> 4.21-79.01in <sup>7</sup> 3.94in increments  (Specify length code OR total run length)	IP20 20	50mm (1.97in) 0050	Single no sheath tail	S00X	DC 24V g
			Semi-diffused <sup>5</sup>	D	e	2100K	21	Double no sheath tail				D00X		
			KKLN-01U (36°) <sup>5</sup>	R	k	2300K	23	Single no sheath IP20 connector				S20X		
			KKLN-01D (14°) <sup>5</sup>	S		2500K	25	Double no sheath IP20 connector				D20X		
			Black cover <sup>5</sup>	Y		2700K	27							
						3000K	30							
						3500K	35							
						4000K	40							
						5000K	50							
						RED	RED	only						
						GREEN	GRN							
						BLUE	BLU							
						ORANGE	ORN							
						AMBER	AMB							

<sup>1</sup> Refer to **Cover/Lens Options** on **Options** pages    <sup>2</sup> Refer to **LED Grading Key** on **Specification sheet** page    <sup>3</sup> Refer to **Length Availability List** or enter total run length instead of length code  
<sup>4</sup> Refer to **Power Feed Options** on **Options** pages    <sup>5</sup> Operating temperatures vary for TiMi with cover and TiMi without cover; please check with a KKDC engineer if operating temperature is limiting product application  
<sup>6</sup> Double clamp TiMi length    <sup>7</sup> Single clamp TiMi length

**Code Example:**

TI	-	SA	-	D	-	s	-	504	-	35	-	m	-	514	-	20	-	0050	-	D20X	-	g
TiMi		Silver Anodised		Semi-diffused				504		3500K		514mm		IP20		50mm (1.97in)		Double no sheath IP20 connector		DC 24V		

**ACCESSORIES**

**Mounting Accessories**

KKCP-01	Clip (1no.)
KKCP-51	Clip (500no.)
KKCP-13	Lock Clip
KKCP-05	Lens Lock Clip for KKLN-01 (1no.)
KKCP-55	Lens Lock Clip for KKLN-01 (500no.)

\* Refer to **Mounting accessories** on **Accessories** pages

**Connection Accessories**

KKCN-01	2 PIN male & female 50mm (1.97in) pair
KKCN-03	2 PIN male & female 300mm (11.81in) pair
KKCN-06	2 PIN 300mm (11.81in) extension lead

\* Refer to **Power feed** on **Accessories** pages

**PSU/Driver**

0-10V/1-10V/DALI/DMX

\* Refer to **Driver/PSU Options** page for details or provide requirement and KKDC to offer the suitable option

**LED ENGINE VARIANTS (LED STRIP TYPE)**

Colour	Output	LED	Lumen/m	Lumen/ft	W/m	W/ft	Spec Doc	Length	Increment
Single CCT	Low	352	510	154	5.5	1.67	TiMi 352	97.3-2014mm (3.83-79.29in)	83.3mm (3.28in)
	Mid	007	950	291	10.9	3.32	TiMi 007	97.4-2014mm (3.83-79.29in)	41.7mm (1.64in)
	Mid	<b>504</b>	<b>1240</b>	<b>378</b>	<b>12.5</b>	<b>3.81</b>	<b>TiMi 504</b>	<b>114-2014mm (4.49-79.29in)</b>	<b>100mm (3.94in)</b>
Warm Dim/Dynamic White	Mid	010	1400	426	10	3.05	TiMi A010	91-2014mm (3.58-79.29in)	38.46mm (1.51in)
	High	508	1720	524	17.5	5.33	TiMi 508	85.4-2014mm (3.36-79.29in)	71.4mm (2.81in)
	High	020	2800	853	20	6.1	TiMi A020	91-2014mm (3.58-79.29in)	38.46mm (1.51in)
Warm Dim/Dynamic White	Mid	207	903	275	11	3.35	TiMi 207	97.3-2014mm (3.83-79.29in)	83.3mm (3.28in)
	High	208	1510	460	15.6	4.75	TiMi 208	180.7-2014mm (7.11-79.29in)	166.7mm (6.56in)
RGB		501	Red 150 Green 320 Blue 50 RGB 460	Red 46 Green 98 Blue 15 RGB 140	15.6	4.75	TiMi RGB	97.3-2014mm (3.83-79.29in)	83.3mm (3.28in)

\* Performance data: A/s/e-line, no cover, 3000K

# TiMi 504

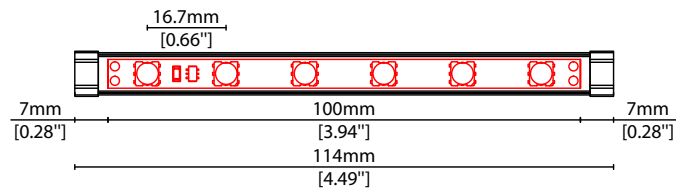
## Length Availability List



Length Code		Fixture Length <sup>1</sup>		LED Strip <sup>2</sup>		End Cap Dimension		Wattage (W)	Output (lm)	
Metric	Imperial(US)	Metric	Imperial(US)	Metric	Imperial(US)	Metric	Imperial(US)		3000K (Test Data)	Range Data
m0114	i0004	114mm	4.49in	100mm	3.94in	N/A	N/A	1.25	124	22-129
m0214	i0008	214mm	8.43in	200mm	7.87in	N/A	N/A	2.50	248	45-257
m0314	i0012	314mm	12.36in	300mm	11.81in	N/A	N/A	3.75	371	67-386
m0414	i0016	414mm	16.30in	400mm	15.75in	N/A	N/A	5.00	495	90-515
m0514	i0020	514mm	20.24in	500mm	19.69in	N/A	N/A	6.25	619	112-644
m0614	i0024	614mm	24.17in	600mm	23.62in	N/A	N/A	7.50	743	134-772
m0714	i0028	714mm	28.11in	700mm	27.56in	N/A	N/A	8.75	866	157-901
m0814	i0032	814mm	32.05in	800mm	31.50in	N/A	N/A	10.00	990	179-1030
m0914	i0036	914mm	35.98in	900mm	35.43in	N/A	N/A	11.25	1114	202-1158
m1014	i0040	1014mm	39.92in	1000mm	39.37in	N/A	N/A	12.50	1238	224-1287
m1114	i0044	1114mm	43.86in	1100mm	43.31in	N/A	N/A	13.75	1361	246-1416
m1214	i0048	1214mm	47.80in	1200mm	47.24in	N/A	N/A	15.00	1485	269-1544
m1314	i0052	1314mm	51.73in	1300mm	51.18in	N/A	N/A	16.25	1609	291-1673
m1414	i0056	1414mm	55.67in	1400mm	55.12in	N/A	N/A	17.50	1733	314-1802
m1514	i0060	1514mm	59.61in	1500mm	59.06in	N/A	N/A	18.75	1856	336-1931
m1614	i0064	1614mm	63.54in	1600mm	62.99in	N/A	N/A	20.00	1980	358-2059
m1714	i0067	1714mm	67.48in	1700mm	66.93in	N/A	N/A	21.25	2104	381-2188
m1814	i0071	1814mm	71.42in	1800mm	70.87in	N/A	N/A	22.50	2228	403-2317
m1914	i0075	1914mm	75.35in	1900mm	74.80in	N/A	N/A	23.75	2351	426-2445
m2014	i0079	2014mm	79.29in	2000mm	78.74in	N/A	N/A	25.00	2475	448-2574

<sup>1</sup> Actual total overall length of light fixture (LED strip + end caps + void/wire hole)

<sup>2</sup> Actual length of PCB strip

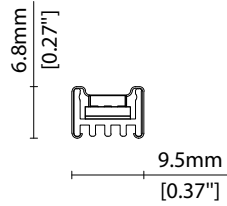


## COVER/LENS OPTIONS

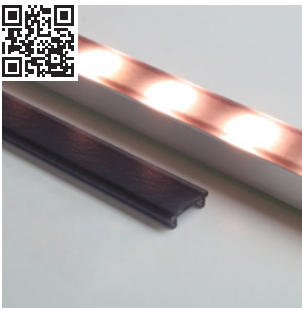
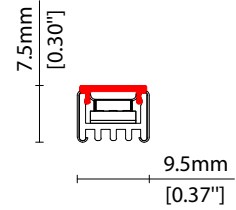
\* Options are an integral part of the fixture ordering codes. Please refer to **Code Table** pages.



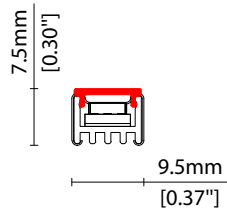
**X** No cover  
W9.5/H6.8mm (W0.37/H0.27")



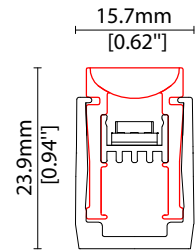
**D** Semi-diffused cover  
Polycarbonate finish  
W9.5/H7.5mm (W0.37/H0.30")



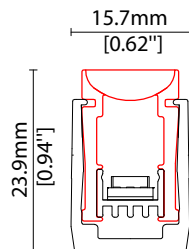
**Y** Black semi-diffused cover  
Black translucent PMMA  
25% light output  
W9.5/H7.5mm (W0.37/H0.30")



**R** 36° lens (KKLN-01U)  
36° beam linear lens,  
co-extruded PMMA  
W12.8/H20.4mm (W0.5/H0.8")



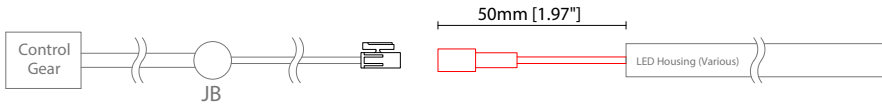
**S** 14° lens (KKLN-01D)  
14° beam linear lens,  
co-extruded PMMA  
W12.8/H20mm (W0.5/H0.79")



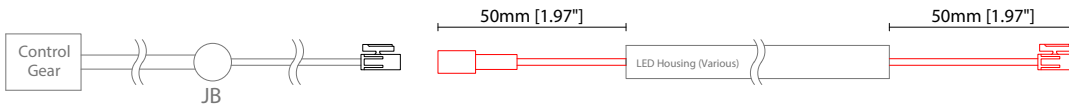
### POWER FEED OPTIONS

\* Options are an integral part of the fixture ordering codes. Please refer to **Code Table** pages.

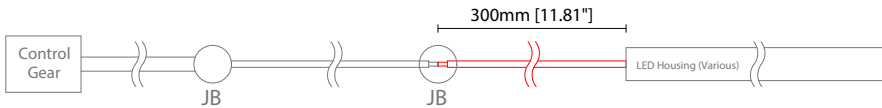
**0050 S20X 50mm (1.97") Single no sheath IP20 connector**



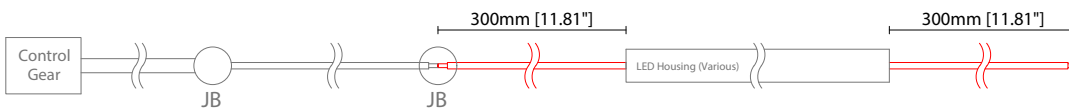
**0050 D20X 50mm (1.97") Double no sheath IP20 connector**



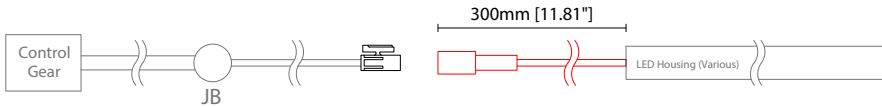
**0300 S00X 300mm (11.81") Single no sheath tail**



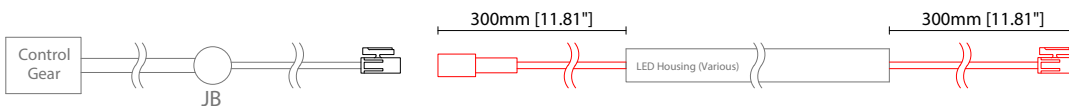
**0300 D00X 300mm (11.81") Double no sheath tail**



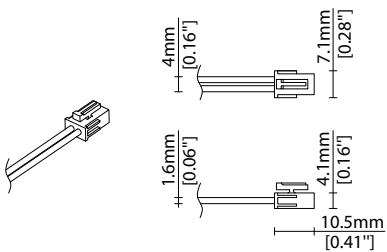
**0300 S20X 300mm (11.81") Single no sheath IP20 connector**



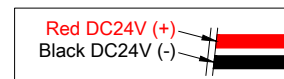
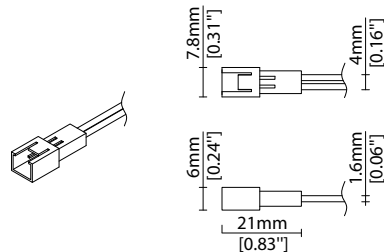
**0300 D20X 300mm (11.81") Double no sheath IP20 connector**



#### 2 Pin Female Connector



#### 2 Pin Male Connector



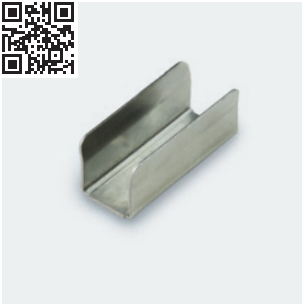
#### Key

Control Gear Power supply, sub-controllers & control systems

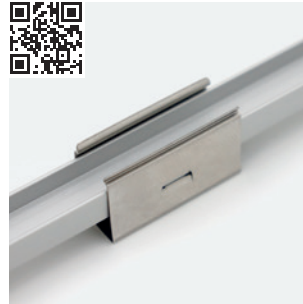
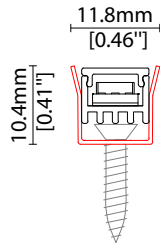
JB Junction box / cable connection

## MOUNTING ACCESSORIES

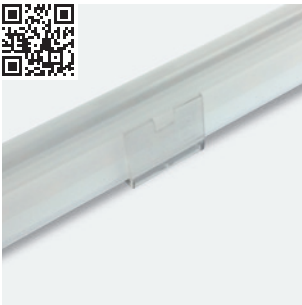
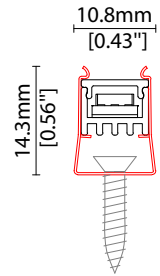
Note: Accessories are to be ordered separately with corresponding code shown below.



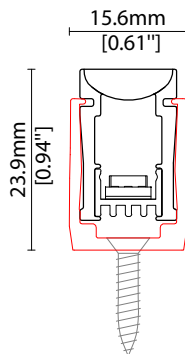
KKCP-01 (1no.)  
KKCP-51 (500no.)  
Clip (allow 3 per metre/40in)  
S/Steel finish  
L25/W11.8/H10.4mm  
(L0.98/W0.46/H0.41")



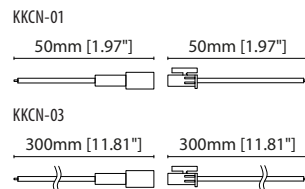
KKCP-13  
Lock clip (allow 2 per metre/40in)  
S/Steel finish  
L25/W10.8/H14.5mm  
(L0.98/W0.43/H0.57")



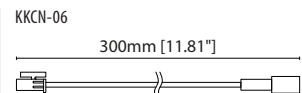
KKCP-05 (1no.)  
KKCP-55 (500no.)  
**For use with KKLN-01 lens only**  
Lens lock clip (allow 3 per metre/40in)  
Clear polycarbonate finish  
L25/W15.6/H24mm  
(L0.98/W0.61/H0.94")



## POWER FEED



KKCN-01 50mm (1.97in) pair  
KKCN-03 300mm (11.81in) pair  
2 PIN male + female connector set



KKCN-06  
2 PIN 300mm (11.81in) extension lead

## KKDC CONTROL



IP20  
Plastic housing  
L170/W59/H29mm  
(L6.69/W2.32/H1.14in)

**KKDM-06** 1-10V  
visDIM dimmable sub-controller  
(4 x 8A max @ 12-36V)



IP20  
Plastic housing  
L170/W53.4/H28mm  
(L6.69/W2.10/H1.10in)

**KKSC-05** DMX  
visDIM dimmable sub-controller  
(4 x 5A max @ 12-36V)



IP20  
Plastic housing  
L170/W59/H29mm  
(L6.69/W2.32/H1.14in)

**KKDL-02** DALI  
visDIM dimmable sub-controller  
(4 x 8A max @ 12-36V)



IP20  
Plastic housing  
L166/W53.4/H23mm  
(L6.54/W2.10/H0.91in)

**KKDL-03** DALI  
visDIM dimmable sub-controller  
(4 x 5A max @ 12-36V)



### AVAILABLE PSU OPTIONS

Control Mode	PSU (Order Code)	Input Voltage AC	Output Voltage DC	Rated Output Current	Rated Power	Dim %	IP Rating
Switched	CEN-60-24	90-295V	24V	2.5A	60W	-	IP67
	HLG-60H-24	90-305V	24V	2.5A	60W	-	IP67
	HLG-100H-24	90-305V	24V	4.0A	100W	-	IP67
	HLG-150H-24	90-305V	24V	6.3A	150W	-	IP67
	HLG-240H-24	90-305V	24V	10A	240W	-	IP67
0-10V (1-10V)	PWM-40-24	90-305V	24V	1.67A	40W	100-0.15 (100-10)	IP67
	PWM-60-24	90-305V	24V	2.5A	60W	100-0.15 (100-10)	IP67
	PWM-90-24	90-305V	24V	3.67A	90W	100-0.15 (100-10)	IP67
	PWM-120-24	90-305V	24V	5.0A	120W	100-0.15 (100-10)	IP67
DALI	LIN100A1	120-277V	24V	1A per channel	100W	100-0.1	IP66/IP40
DMX RGB	LIN100A1	120-277V	24V	1.33A per channel	100W	100-0.1	IP66/IP40
DMX RGBW	LIN100A1	120-277A	24V	1A per channel	100W	100-0.1	IP66/IP40

### Flicker Free Options - Combination of PSU+ sub-controller

Control Mode	PSU (Order Code)	Sub-controller (Order Code)	Input Voltage AC	Output Voltage DC	Rated Output Current	Rated Power	Dim %	IP Rating PSU/ Sub-controller
0-10V or 1-10V	CEN-60-24	KKDM-06	90-295V	24V	2.5A	60W	100-0.9	IP67/IP20
	HLG-60H-24	KKDM-06	90-295V	24V	2.5A	60W	100-0.9	IP67/IP20
	HLG-100H-24	KKDM-06	90-295V	24V	4.0A	100W	100-0.9	IP67/IP20
	HLG-150H-24	KKDM-06	90-295V	24V	6.3A	150W	100-0.9	IP67/IP20
	HLG-240H-24	KKDM-06	90-295V	24V	10.0A	240W	100-0.9	IP67/IP20
DALI	CEN-60-24	KKDL-02/03	90-295V	24V	2.5A	60W	100-0.1	IP67/IP20
	HLG-60H-24	KKDL-02/03	90-305V	24V	2.5A	60W	100-0.1	IP67/IP20
	HLG-100H-24	KKDL-02/03	90-305V	24V	4.0A	100W	100-0.1	IP67/IP20
	HLG-150H-24	KKDL-02/03	90-305V	24V	6.3A	150W	100-0.1	IP67/IP20
	HLG-240H-24	KKDL-02/03	90-305V	24V	10.0A	240W	100-0.1	IP67/IP20
DMX RGB	CEN-60-24	KKSC-05	90-295V	24V	2.5A	60W	100-0.9	IP67/IP20
	HLG-60H-24	KKSC-05	90-305V	24V	2.5A	60W	100-0.9	IP67/IP20
	HLG-100H-24	KKSC-05	90-305V	24V	4A	100W	100-0.9	IP67/IP20
	HLG-150H-24	KKSC-05	90-305V	24V	6.3A	150W	100-0.9	IP67/IP20
	HLG-240H-24	KKSC-05	90-305V	24V	10.0A	240W	100-0.9	IP67/IP20

<sup>1</sup> The items shown above cover the most frequently used specification but does not exhaust the possible options

<sup>2</sup> PSU and/or driver can be chosen from the table, or KKDC may recommend the best option upon receipt of the controls requirement and installation environment

<sup>3</sup> Electrical shop drawing will include detailed information of PSU and relevant control drivers

<sup>4</sup> Cut sheets are available on the controls section of [www.kkdc.lighting](http://www.kkdc.lighting) or upon request