

JOB NAME _____

CONTACT _____

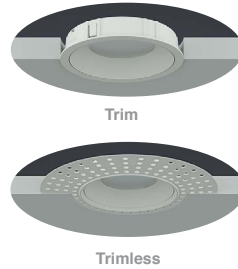
ORDERING CODE _____

Eco NU3" Round Downlight

COB



eldoLED[®]
your product | our drive



DESCRIPTION

The EcoNU3RD is an economical and highly efficient spec grade 3" recessed downlight with thoughtful construction and pleasing aesthetics. Offered standard with premium dimming using EldoLED 1% flicker free drivers 120V-277V universal voltage. Also offered 347V. Several beam angles available, plus an optional high-efficiency BrightView diffused lens for smooth light distribution and obscured LED image.

For the trim version, a minimalistic look is achieved with an ultrathin 1/16" trim that is only 5/16" wide. Color choices of both trim and bezel are offered for a customized look. For the trimless version, a perforated, mud up, regressed trim assembly provides for clean, trim free installation. Perforated mud frame's integrated lip helps guide the joint compound creating a sharp and clean opening.

HOUSING

Electrocoated 16-gauge cold-rolled steel provides enhanced structural reinforcement and rust prevention. Superior, UL-certified, injection-molded commercial-grade Lexan™ (PC) is used for the frame and regressed bezel trim. Lexan provides unmatched durability and impact resistance, and is tested for UV resistance and water exposure in outdoor applications. The thermally-advanced, anodized heat sink uses 6063 aluminum alloy. Wet location rated is offered standard. A 90-minute constant-power IOTA emergency battery backup is available.

MOUNTING

An advanced mounting system allows for quick and secure installation with LED and driver serviceability from below the ceiling. The LED assembly uses die-cast aluminum mounting clamp grips (MCG) that swing out to tighten onto variable ceiling thicknesses. Integrated rubber feet on each MCG provide a non-slip vibration-resistant installation. The hidden MCG system is accessible from below ceiling by removing the snap-in lens/bezel assembly with either the included suction cup or a screwdriver blade. Integrated bar hangers feature integral toothed nails, T-bar mounting slots with locking holes, tabs for joist positioning. Retrofit mounting option allows for installation from below ceiling by use of compact driver box. No risk damaging LED or bezel assembly during installation, these are installed during last steps. Fixture and driver are easily removed for servicing after install without damaging drywall.

MOUNTING DIMENSIONS	CEILING THICKNESS	CEILING CUTOUT	New Construction Bar Hangers (included)	Mounting Length: 14-3/4" to 26"
Trim	1/8" to 1-1/4"	3-3/8" diameter		
Trimless	3/8" to 1-3/4"	3-1/2" diameter	Extension Kit p/n: K20266 (ordered separately, 1 per fixture)	Extends a pair of Bar Hangers Total Mounting Length: 29" to 48"

LISTINGS

- ETLus Listed to UL1598, cETL Listed to CSA C22.2 #250.0
- IP65 with lens - Suitable for wet locations with lens - Suitable for damp locations without lens
- Non-conductive, Lexan dead-front construction
- Made in the USA - meets the requirements of the Buy American provision within the ARRA

RATINGS / CERTIFICATIONS	NC	RET	IC	ICAT	CP
Type non-IC	✓	✓			
Type IC			✓	✓	✓
Chicago Plenum (CCEA)					✓
Suitable for air handling plenums				✓	✓
Reduced airflow (with lens) ASTM E283	✓	✓	✓	✓	✓

LED INFO

- 90 CRI: SDCM = 2-step MacAdam Ellipse, Lumen Maintenance: $L_{70} > 49,500$ hrs
- 80 CRI: SDCM = 3-step MacAdam Ellipse, Lumen Maintenance: $L_{70} > 49,500$ hrs

ORDERING CODE	
SERIES	NU3
TYPE	RD RDT round downlight round downlight trimless
LED	SW static white
DELIVERED LUMENS	07LM 600 lm 10LM 755 lm 13LM 930 lm 15LM 1200 lm 20LM 1430 lm 25LM 1600 lm 27LM 1885 lm Calculated Delivered Lumens = [Delivered Lumen Value] x [CCT Multiplier] x [Reflector Multiplier] Standard Configuration: 3000K 80CRI WH65
CCT	22K 2200K 27K 2700K 30K 3000K 35K 3500K 40K 4000K 50K 5000K CCT CCT MULTIPLIER FOR LUMEN OUTPUT
CRI	80 90 ¹ 80 CRI 90 CRI
REFLECTOR & LM MULTIPLIER	HE40 40° high efficiency diffused lens (0.87) HE50 50° high efficiency diffused lens (0.91) HE70 70° high efficiency diffused lens (0.94) D45 45° diffused with clear lens (0.89) D60 60° diffused with clear lens (0.91) WH65 65° brilliant white with clear lens (1.00)
NO LENS OPTION	NL ³ no lens
ACCESSORIES	HCL ⁹ honeycomb louver
VOLTAGE	120 UNV 347 ⁸ 120V-277V 347V
DIMMING	10V ⁷ 0-10V 1% dimming standard DIM10 ⁴ eldoLED flicker free 0-10V dimming to 1% DIM10Z ⁴ eldoLED flicker free 0-10V dimming to 0% DALI ⁴ eldoLED flicker free DALI dimming to 1% DALIZ ⁴ eldoLED flicker free DALI dimming to 0% LUT ⁵ Lutron Hi-lume EcoSystem dimming to 1%, Soft-on & Fade-to-Black LUTP ⁶ Lutron Hi-lume Premier EcoSystem dimming to 0.1%, Soft-on & Fade-to-Black ELV ⁵ leading & trailing edge (Triac/ELV) dimming to < 10% ELV1 ⁵ leading & trailing edge (Triac/ELV) dimming to 1%
MOUNTING OPTIONS	NC new construction with ceiling fitting plate IC ² insulation contact housing ICAT ² insulation contact/airtight housing CP ² chicago plenum housing RET retrofit, no ceiling fitting plate
TRIM COLOR	BK black WH white MC matte chrome WT wheat BZ bronze Not applicable to trimless option. Do not include in trimless ordering code.
BEZEL COLOR	BK black WH white MC matte chrome BZ bronze WT wheat
ELECTRICAL OPTIONS	EM7 emergency battery backup, 90 minutes at 7 watts to LED EM12 emergency battery backup, 90 minutes at 12 watts to LED

ORDERING CODE

Follow the steps to specify your fixture, example:

NU3 - RD - SW - 20LM - 35K - 90 - HE40 - 120 - DIM10 - NC - WH - WH - EM7

SW (LED)	POWER
DELIVERED LM	W (80/90 CRI)
600	7
755	9
930	11
1200	13
1430	17
1600	21
1885	23

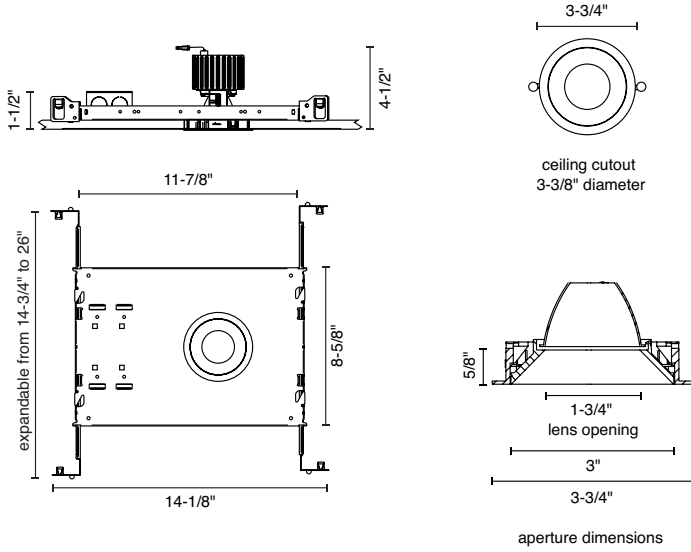
Power Factor ≥ 0.9

NOTES

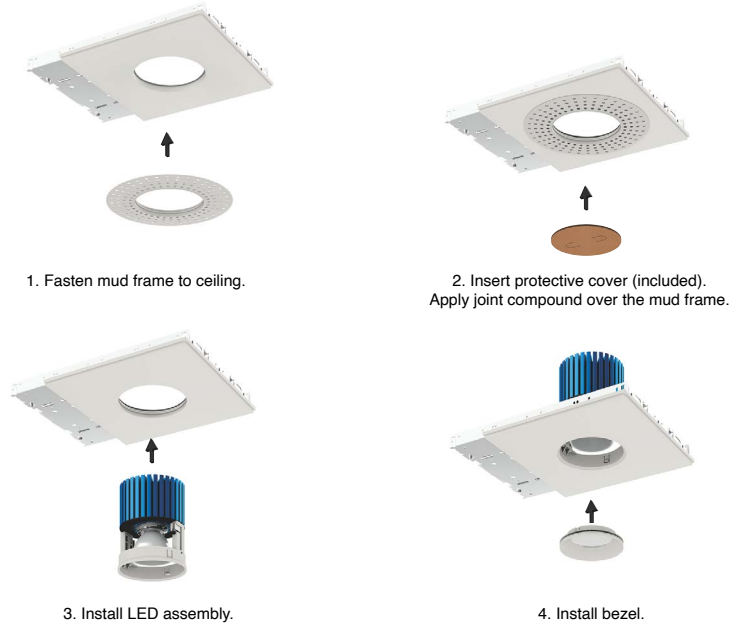
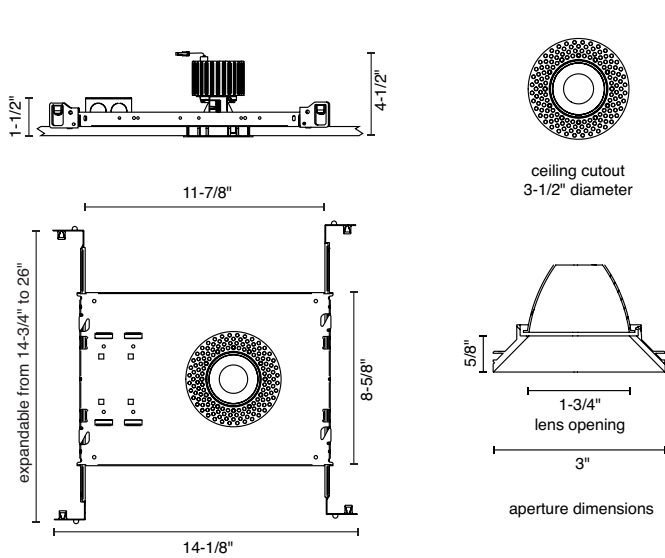
- 90 CRI not available in 2200K or 5000K.
- IC/ICAT/CP not available in 20LM or 27LM.
- "No lens" option available for D45, D60, or WH65 and is damp location rated.
- Driver uses logarithmic dimming curve as standard. For linear dimming curve add "LIN" after dimming code, i.e. DIM10LIN.
- Triac/ELV dimming available in 120V only.
- LUT/LUTP not available in 25LM or 27LM.
- 10V dimming only available in 15LM, 20LM and 25LM.
- DIM10 offered in 347V using a dedicated 347V Osram 0-10V 1% Driver; this requires above ceiling access for maintenance of the driver. For all other dimming options 347V is offered using a miniature Step-Down Transformer integrated with the Electrical Box. Triac and ELV dimming are not available.
- HCL not available with lens. Multiply delivered lumens by (0.78) and beam spread by (0.80) when honeycomb louver is chosen.

MOUNTING OPTIONS

NC - NEW CONSTRUCTION TRIM



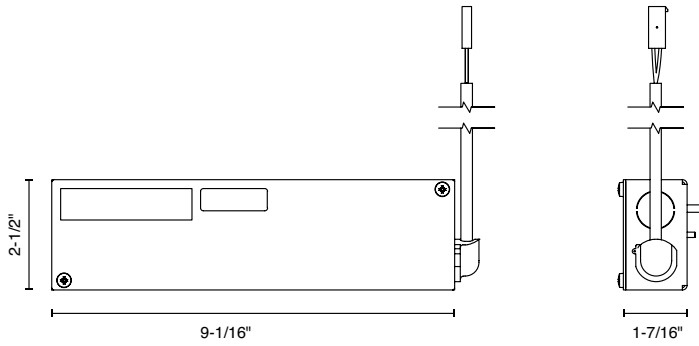
NC - NEW CONSTRUCTION TRIMLESS



MOUNTING OPTIONS (CONTINUED)

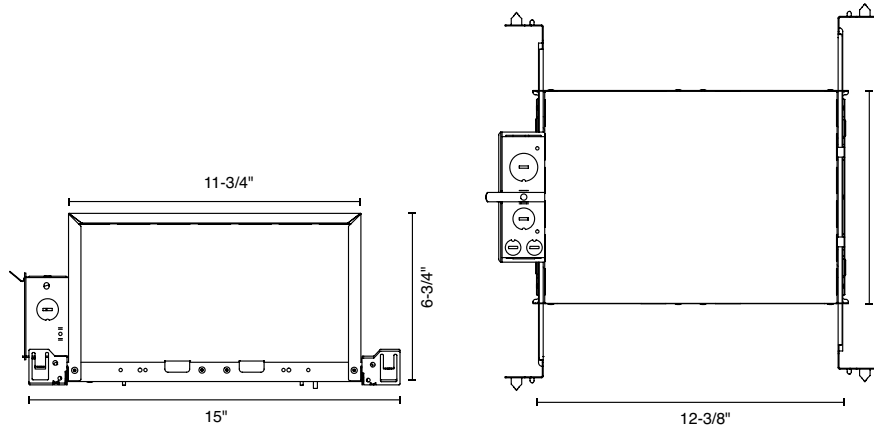
RET - RETROFIT

TRIM/TRIMLESS



IC - INSULATION CONTACT HOUSING

TRIM/TRIMLESS



CP - CHICAGO PLENUM

ICAT - INSULATION CONTACT / AIR TIGHT

TRIM/TRIMLESS

