

Job Name:	Contact:
Ordering Code:	Fixture Type:

ZETA12U 277V

Description

The LED ZETA12U by Bruck is a low profile LED line voltage under cabinet light offered in 277V. It is offered in 4 lengths to accommodate standard under cabinet sizes. ZETA12U has ZERO pixelation with premium and efficient opal diffuser for even illumination. 277V fixtures and accessories have no rocker switch and are hard wired only. 277V fixtures are non-dimmable. Available in white finish.

Housing

Extruded aluminum housing with rear knockouts for wiring.

Mounting

Quick installation via captive screws

Electrical/Controls

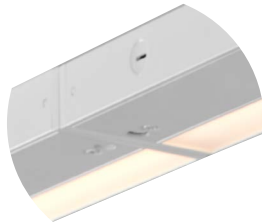
- 277Vac, 50/60Hz input, Electronic 60V driver
- Linkable up to 400W
- 370 lumens per foot
- Protections: Short circuit, over current, over voltage, over temperature
- 277V remote switching (no rocker switch)

LED Info

- **LED:** Osram 5630
- **CCT:** 3000K
- **CRI:** > 90CRI (95 typical)
- **Duv:** +/- 0.001
- **SDCM:** 3-step MacAdam Ellipse
- **Lumen Maintenance:** L₇₀ > 50,000 hrs
- **Warranty:** 5 year limited fixture warranty

Listings

- ETLus Listed to UL1598 and UL153 (suitable for dry locations only)
- cETL Listed to CSA C22.2 #250.0 and #9.0



Direct Connect

Ordering Codes

Follow the steps to specify your fixture, example: 650 - 16 - 30K - 95 - 277 - WH

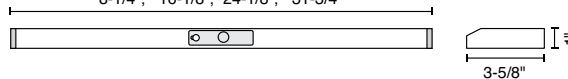
Part Number	LED	Length		CCT		CRI		Voltage		Finish	LENGTH	LUMENS	WATT
		8	16	24	32	30K	3000K	95	95 CRI				
		8-1/4"	16-1/8"	24-1/8"	31-3/4"						8-1/4"	253lm	7.8W
											16-1/8"	492lm	13W
											24-1/8"	783lm	18W
											31-3/4"	1056lm	23W

NOTES

- 1 277V available in 3000K with white finish only with no rocker switch.
- 277V fixtures and accessories must be hard or direct wired.

Available in 5 sizes:

8-1/4", 16-1/8", 24-1/8", 31-3/4"



Knockout located at center of all lengths

Job Name:

Contact:

Ordering Code:

Fixture Type:

Accessories

138547WH/277¹ occupancy sensor box, white



Connectors²



End-to-end

MC flex

Occupancy Sensor Box

Technical Specs:

277Vac

Multiple 1/2" knockouts

Captive mounting screws

Time Delay: 30 sec minimum

Dimensions: 8-1/4"L x 1" H x 3-5/8"W

Occupancy Timeout: 10 sec

Sensing Distance: 3 ft

HARDWIRED ONLY

NOTE

- 1 277V has no rocker switch. Must be hard or direct wired.
- 2 End-to-end connector and MC flex connector included with each fixture.