

Job Name:	Contact:
Ordering Code:	Fixture Type:

## ZETA12U CCT Select

### Description

The LED ZETA12U is a low profile LED line voltage under cabinet light offered in 120V. It is offered in 5 lengths to accommodate standard under cabinet sizes. ZETA12U has ZERO pixelation with premium and efficient opal diffuser for even illumination. This direct wire or plug in under cabinet task fixture can be directly connected or with a flex connector available in lengths from 6" to 72". Easy access key hole door with knockouts. A standard occupancy sensor integrated wire box is offered with 3 way switching. Rocker switch is in 120V only. Available in white or antique bronze finishes.

### Housing

Extruded aluminum housing with rear knockouts for wiring.

### Mounting

Quick installation via captive screws

### Electrical/Controls

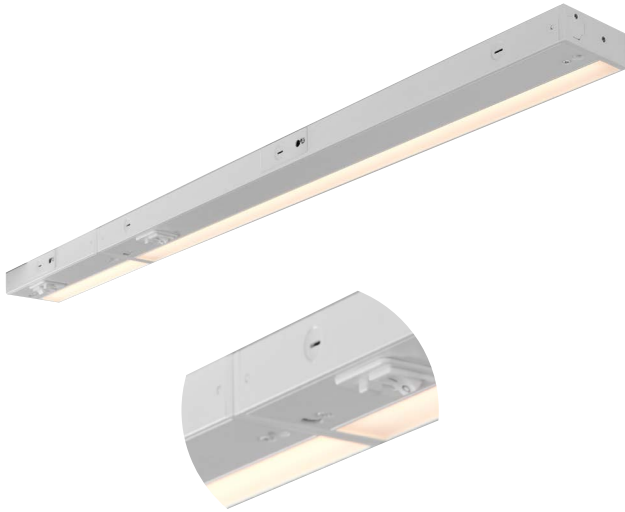
- 120Vac, 50/60Hz input, Electronic 60V driver
- Linkable up to 300W
- 485 lumens per foot
- Protections: Short circuit, over current, over voltage, over temperature
- 120V dimmable (incandescent)
- Recommended, Lutron DV-600P (tested) or comparable

### LED Info

- LED: 2835H Edison
- CCT: 3000K, 3500K, 4000K selectable CCT
- CRI: > 90CRI
- Duv: +/- 0.001
- SDCM: 3-step MacAdam Ellipse
- Lumen Maintenance:  $L_{70} > 50,000$  hrs
- Warranty: 5 year limited fixture warranty

### Listings

- ETLus Listed to UL1598 and UL 153 (suitable for dry locations only)
- cETL Listed to CSA C22.2 #250.0 and #9.0
- JA8, Title 24 certified (2019 standard)
- Energy Star certified



Direct Connect



Standard three selectable CCT 3000K, 3500K, 4000K



BZ



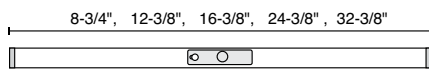
WH

## Ordering Codes

Follow the steps to specify your fixture, example: 650 - 16 - 3CCT - 90 - 120 - WH

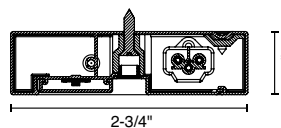
Part Number	Length	CCT	CRI	Voltage	Finish	
650 LED	8	8-1/4"	3CCT 3000K 3500K 4000K	90 90 CRI	120 120V	BZ bronze WH white
	12	12-3/8"				
	16	16-1/8"				
	24	24-1/8"				
	32	31-3/4"				

Available in 5 sizes:



Knockout located at center of all lengths

### Dimensions



LENGTH	LUMENS	WATT
8-3/4"	360lm	6W
12-3/8"	485lm	8W
16-3/8"	650lm	10W
24-3/8"	980lm	14W
32-3/8"	1350lm	18W



Job Name:	Contact:
Ordering Code:	Fixture Type:

## Accessories

- 138521BK 6" flexible connector, black
- 138522BK 12" flexible connector, black
- 138523BK 24" flexible connector, black
- 138524BK 72" flexible connector, black
  
- 138521WH 6" flexible connector, white
- 138522WH 12" flexible connector, white
- 138523WH 24" flexible connector, white
- 138524WH 72" flexible connector, white



**Flexible Connector**

Technical Specs:  
120Vac



**Plug-In Power Feed**

Technical Specs:  
120Vac



**Power Feed**

Technical Specs:  
120Vac

- 138527BK 72" plug-in feed, black
- 138527WH 72" plug-in feed, white

- 138526BK 72" power feed, black
- 138526WH 72" power feed, white

- 138529BZ<sup>1</sup> switch box with occupancy sensor, bronze
- 138529WH<sup>1</sup> switch box with occupancy sensor, white



On / Off Switch

Captive Screw with cover cap

Rear access door with 1/2" knock out & quick connector

**Switch Box with occupancy sensor**

Technical Specs:  
120Vac  
Multiple 1/2" knockouts  
Captive mounting screws  
Time Delay: 30 sec minimum  
Dimensions: 8-1/4"L x 1"H x 3-5/8"W  
Occupancy Timeout: 30 sec  
Sensing Distance: 3 ft  
Up to 300W on single box

### Connectors<sup>2</sup>



**End-to-end      MC flex**

**Notes**

1. 120V rocker switch included.  
2. End-to-end connector and MC flex connector included with each fixture.