

# SLA20/SLA20-2 – Contemporary Arms

TYPE



SLA20

1. ARM

2. COLOR

## 1. ARM

SLA20 (Slips over 4" pole. Weight: 10 lbs. EPA: .70)

SLA20-2 (Twin arms, slips over 4" pole. Weight: 18 lbs.

EPA: 1.25)

## 2. COLOR

WH Arctic White

BL Black

BLT Matte Black

DB Dark Bronze

DGN Dark Green

TT Titanium

WDB Weathered Bronze

MDB Bronze Metallic

VBU Verde Blue

CRT Corten

MAL Matte Aluminum

MG Medium Grey

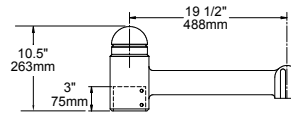
AGN Antique Green

LG Light Grey

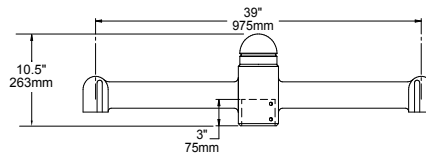
RAL Premium Color

CUSTOM \* \* Contact Factory

## DIMENSIONS



SLA20 (4" pole)



SLA20-2 (4" pole)

## SPECIFICATIONS

The arm shall be of one piece unitized aluminum construction, fully welded and assembled. The slip fitter shall be cast aluminum with an internal wireway and pole stop. The arm shall be prewired with a quick connector for easy installation.

The arm shall have a cast aluminum fitter welded to the top of the arm(s) for attaching the fixture. The fixture shall be mounted with three stainless steel bolts through the top of the arm fitter into the fixture. The attachment point shall have a silicone pad for sealing the fixture to arm connection.

The arm shall slip over a 4"/100mm diameter pole or tenon. The cast aluminum slip fitter shall have six stainless steel cup point set screws for securing the arm to the pole or tenon.

JOB \_\_\_\_\_

TYPE \_\_\_\_\_

NOTES \_\_\_\_\_

\_\_\_\_\_



ARCHITECTURAL AREA LIGHTING

16555 East Gale Ave. | City of Industry | CA 91745

P 626.968.5666 | F 626.369.2695 | www.aal.net

Copyright © 2012 | REV 6.12