

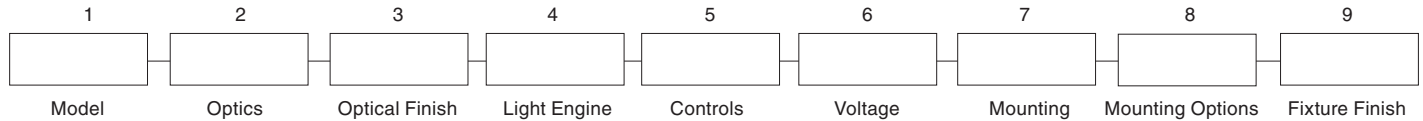
## FEATURES

- Three hood styles
- Six decorative screen options
- Post-top, wall mount, or pole mount arm
- Cast aluminum struts
- Full cutoff options
- Powder coat finish in 13 standard colors with a polymer primer sealer



PKWS

## ORDERING CODE



### 1. LUMINAIRE

PKWS Parkway Square Accent (small scale)

### 2. HOOD

<u>ANGLED</u>	<u>STRAIGHT</u>	<u>DOUBLE</u>
ANG	STR	DBL

### 3. OPTICS

HORIZONTAL (ANG hood and LEDs only. Flat glass lens)

T1 (Type 1) T3 (Type 3. **DLC Listed**) T5 (Type 5. **DLC Listed**)

VERTICAL

GLA (Frosted glass diffuser)

### 4. LAMP/BALLAST

**LED** (Warm white (3000K), Neutral white (4000K), Bright white (5000K). Class 2, 120 thru 277 volt.)

36LED-WW 36LED-NW 36LED-BW

**GLA only:**

9LED-WW <sup>1</sup> 9LED-NW <sup>1</sup> 9LED-BW <sup>1</sup>

18LED-WW 18LED-NW 18LED-BW

*Note: <sup>1</sup> 9LED configurations not dimmable*

**5. DECORATIVE SCREEN** (Painted to match fixture. Also available in stainless steel or copper. Not available with horizontal optics)

<u>INFINITY</u>	<u>OFFSET</u>	<u>WHEAT</u>
DSIN	DSOF	DSWH
<u>TRIO</u>	<u>SHUTTER</u>	<u>CUSTOM</u>
DSTR	DSSH	DSCS

### 6. FIXTURE FINISH

#### Standard Color

WH	Arctic White
BL	Black
BLT	Matte Black
DB	Dark Bronze
DGN	Dark Green
TT	Titanium
WDB	Weathered Bronze
MDB	Bronze Metallic
VBU	Verde Blue
CRT	Corten
MAL	Matte Aluminum
MG	Medium Grey
AGN	Antique Green
LG	Light Grey

#### Premium Color

SHK	Shamrock
SPP	Salt and Pepper
SFM	Seafoam
WCP	Weathered Copper
RAL	RAL 4 digit Color
CUSTOM	Custom Color

### 7. OPTIONS

#### GENERAL

ULS (Upper lens shield)  
LDL (Lightly diffused lens)

#### HOOD

COP (Copper) STS (Stainless steel)

#### DECORATIVE SCREEN

CPR (Copper) SSP (Stainless steel)

**8. MOUNTING** – Standard fixture shall slip over a 3" / 76mm pole or tenon or may choose one

ARM POLE MOUNT (Mounts to the side of a 4" / 102mm diameter pole or post)

PSA-TU (Fixture above with up-swept arm)  
PSA-TD (Fixture above with down-swept arm)  
PSA-BU (Fixture below with up-swept arm)  
PSA-BD (Fixture below with down-swept arm)

#### WALL MOUNT

PSWM-TU (Fixture above with up-swept arm)  
PSWM-TD (Fixture above with down-swept arm)  
PSWM-BU (Fixture below with up-swept arm)  
PSWM-BD (Fixture below with down-swept arm)

## SPECIFICATIONS

### HOUSING

Housing shall be cast aluminum, A356 alloy, free of any porosity, foreign materials, or cosmetic fillers. The driver assembly is mounted internally and accessed by loosening four captive bolts and lifting away the lamp compartment. The lamp compartment is sealed with a molded silicone gasket. The reflector cone is matte finished aluminum. All lenses are molded, seamless high impact lighting grade acrylic. The lens shall be sealed to the housing with a molded silicone gasket on the top and bottom. The vertical struts are cast aluminum and painted to match the fixture. All internal and external hardware is stainless steel. The fixture shall slip over a 3"/76mm round post top and secured with four stainless steel set screws. The hood is formed from 5052 H32 aluminum, 304 stainless steel or 110 copper. For indirect models, the underside of the painted, copper, and stainless steel hoods are finished in a high reflectance white powder coating. Copper hoods are unfinished to develop a patina.

The GLA element shall be frosted borosilicate glass with a twist on connection to the lower cone assembly. The cone is matte finished anodized aluminum.



ARCHITECTURAL AREA LIGHTING  
ARCHITECTURAL AREA LIGHTING  
17760 Rowland Street | City of Industry | CA 91748  
P 626.968.5666 | F 626.369.2695 | www.aal.net  
Copyright © 2016 February 17, 2017 1:09 PM

JOB \_\_\_\_\_  
TYPE \_\_\_\_\_  
NOTES \_\_\_\_\_

## ELECTRICAL

The LED driver shall be integral to the fixture mounted on a prewired module with a quick disconnect plug. The driver module has two keyhole slots and is removable by loosening four screws. The driver shall accept 120 thru 277 volts input, with output drive current of 350ma. Standard color temperatures for LEDs shall be 3000K, 4000K, and 5000K. Rated luminous efficacy of luminaire shall be >40 lm/w, with rated light output of >1600 lumens for 5000K LED, standard mount.

## INSTALLATION & MOUNTING

The PKWS shall be factory supplied as a complete, prewired assembly. The fixture shall slip over a 3"/75mm open top round pole or 4"/100mm pole mounted arm and secured and leveled with 4 stainless steel set screws

## FINISH

Fixture finish consists of a five stage pretreatment regimen with a polymer primer sealer, oven dry off and top coated with a thermoset super TGIC polyester powder coat finish. The finish shall meet the AAMA 605.2 performance specification which includes passing a 3000 hour salt spray test for corrosion resistance.

## CERTIFICATION

The fixture is listed with ETL for outdoor, wet location use. Conforms to UL1598 and Canadian CSA Std. C22.2 no.9. IP66 rated for horizontal configurations and IP66 rated for vertical configurations.

## WARRANTY / TERMS AND CONDITIONS OF SALE

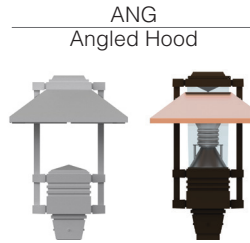
Download:

<http://www.hubbellighting.com/resources/warranty/>

*AAL reserves the right to change product specifications without notice.*

## DIMENSIONS

### HOOD



Horizontal Optics  
HT: 23"/584 mm  
DIA: 14"/356 mm  
EPA: 1.68  
WT: 34 lbs.

Vertical Optics  
HT: 21.75"/553 mm  
DIA: 14"/356 mm  
EPA: 1.46  
WT: 44 lbs.



Vertical Optics  
HT: 21.75"/553 mm  
DIA: 21"/533 mm  
EPA: 1.52  
WT: 45 lbs.



Vertical Optics  
HT: 21.75"/553 mm  
DIA: 21"/533 mm  
EPA: 1.56  
WT: 46 lbs.

## DECORATIVE SCREENS

*Painted to match fixture. Also available in stainless steel or copper. Not available with horizontal optics.*



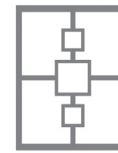
DSIN  
Infinity



DSOF  
Offset



DSWH  
Wheat



DSTR  
Trio



DSSH  
Shutter



## PKWS T5 36LED BW

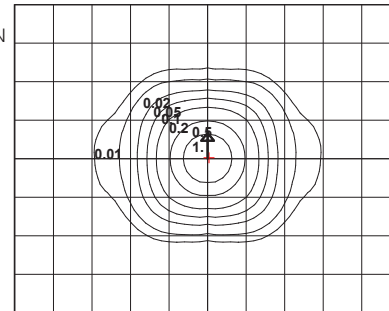
WATTAGE: 38.9 LUMEN OUTPUT: 1961 EFFICACY: 50.4 Lm/W

### B1 U0 G0

FORWARD LIGHT		LUMEN
FL	30°	15.9%
FM	60°	29.0%
FH	80°	5.5%
FVH	90°	0.3%

BACK LIGHT		LUMEN
BL	30°	15.8%
BM	60°	28.4%
BH	80°	4.8%
BVH	90°	0.3%

UPLIGHT		LUMEN
UL	100°	0%
UH	180°	0%



12' MOUNTING HEIGHT

UPLIGHT 0%  
DOWNLIGHT 100%

[IES files can be found at www.aal.net](http://www.aal.net)