

# PROS – Providence Small Housing Scale

TYPE |

- Die cast aluminum construction for reliability, robust construction and corrosion resistance
- Tool-less access and removal of lamp and ballast
- Direct full cutoff optical system
- Indirect asymmetric and symmetric cut-off optical systems
- Slips over a 3"/75mm pole for mounting
- IP55 rating
- Powder coat finish in 13 standard colors with a polymer primer sealer



PROS

1. LUMINAIRE	2. LAMP/LED	3. COLOR	4. OPTIONS	5. MOUNTING

## 1. LUMINAIRE

### DIRECT REFLECTIVE OPTICAL SYSTEM

PROS-DIRS (*Symmetric Compact fluorescent and Metal Halide*)

## 2. LAMP/BALLAST

### ELECTRONIC METAL HALIDE

PGJ5 base, Mini Mastercolor lamp.

20MMC 39MMC

G12 base, T-6 ceramic lamp

39MHT6EB 70MHT6EB

### COMPACT FLUORESCENT (*Specify wattage. -18°C minimum starting temp*)

GX24q base, 26, 32 or 42 watt lamp

CF

Lamps not included, except LED option.

## 3. COLOR

WH <i>Arctic White</i>	VBU <i>Verde Blue</i>
BL <i>Black</i>	CRT <i>Corten</i>
BLT <i>Matte Black</i>	MAL <i>Matte Aluminum</i>
DB <i>Dark Bronze</i>	MG <i>Medium Grey</i>
DGN <i>Dark Green</i>	AGN <i>Antique Green</i>
TT <i>Titanium</i>	LG <i>Light Grey</i>
WDB <i>Weathered Bronze</i>	RAL <i>Premium Color</i>
MDB <i>Bronze Metallic</i>	CUSTOM * * <i>Contact Factory</i>

## 4. OPTIONS

SPK ( <i>Decorative spike</i> )	PFN ( <i>Finial painted brass</i> )
BPS ( <i>Struts painted brass</i> )	HSS ( <i>House side shield, not available for Type 5. Factory installed.</i> )
LDL ( <i>Lightly diffused lens. Frosted, flat tempered glass lens has a lightly diffused finish to minimize the lamp and reflector brightness.</i> )	
AD4 ( <i>Adapter used only with standard AAL arms and post top mount fixtures to slip over a 4"/100mm O.D. pole</i> )	

## 5. MOUNTING – Optional

One-piece cast aluminum arms accept the standard 3" slip fitter on the Providence fixture. The arms are prewired with quick disconnects. Wall mounted arms do not include wall mounting hardware. Pole mounted arms use 3/8-16 hardware bolts for attaching to the pole.

### WALL MOUNT

WMA59D (*Mount down*) WMA59U (*Mount up*)

### POLE MOUNT (*Side mounts to a 4" O.D. pole.*)

TRA59D (*Mount down*) TRA59U (*Mount up*)

[Visit www.aal.net](http://www.aal.net) for Arms, Poles & Accessories Specification Guide

## SPECIFICATIONS

### REFLECTOR MODELS - REFLECTOR/LAMP

The upper lamp housing shall be die cast aluminum. The internal reflector module is sealed from the outer housing with a one piece, memory retentive, molded silicone gasket. The tempered glass lens shall be sealed to the housing with a silicone gasket. One stainless steel latch shall release the door to allow access to the lamp.

The reflector module shall be composed of a spun, specular aluminum panel rigidly attached in a die cast aluminum housing. The horizontal lamp reflectors (DIRS) shall meet ANSI-IES standards for full cutoff reflector systems.

### REFLECTOR MODELS - BALLAST

The lower ballast housing shall be cast aluminum. The tool-less ballast access for servicing is accomplished by a quarter turn motion of the top cover. The ballast shall be mounted on a prewired tray with a quick disconnect plug attached to the underside of the cover. HID ballasts are high power factor, rated for -30°C starting. Electronic ballasts for metal halide lamps are sound rated A. Sockets are medium base, G12 for use with T6 lamps. All sockets are pulse rated porcelain. All configurations shall accept 120 through 277 volt input. Compact fluorescent ballasts are rated for -18°C

See next page

JOB	_____
TYPE	_____
NOTES	_____
	_____



# PROS – Providence Small Housing Scale

TYPE |

## INSTALLATION & MOUNTING

The PROS shall be factory supplied as a complete, prewired assembly. The fixture shall slip over a 3"/75mm open top pole or 4"/100mm pole mounted arm and secured and leveled with 3 stainless steel set screws.

## CONTROLS

- SCP shall have an integral surge protection device with a current rating of 10,000 Amps using the industry standard 8/20uSec wave and surge rating of 372J
- Sensor not intended for use with additional photo-control, wireless control or dimming systems.

## FINISH

Fixture finish consists of a five stage pretreatment regimen with a polymer primer sealer, oven dry off and top coated with a thermoset super TGIC polyester powder coat finish. The finish shall meet the AAMA 605.2 performance specification which includes passing a 3000 hour salt spray test for corrosion resistance.

## CERTIFICATION

The fixture shall be listed with ETL for outdoor, wet location use, UL1598 and Canadian CSA Std. C22.2 no.250. IP=55.

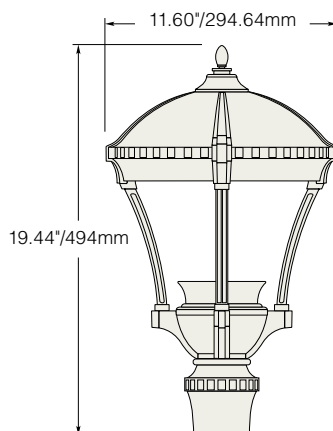
## WARRANTY / TERMS AND CONDITIONS OF SALE

Download:

<http://www.hubbelling.com/resources/warranty/>

Contact AAL for complete warranty language, exceptions, and limitations.

## DIMENSIONS



Weight: 9 LBS / 4kg

EPA: 0.46

**PROS H5 70MH** WATTAGE: 82 LUMEN OUTPUT: 2221 EFFICACY: 75.6

### B1 U0 G0

#### FORWARD LIGHT LUMEN

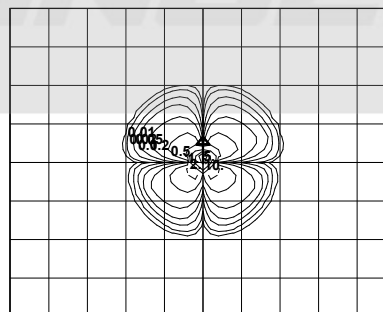
FL	30°	13.3%	822
FM	60°	6.8%	419
FH	80°	0.7%	46
FVH	90°	0%	2

#### BACK LIGHT

BL	30°	8.0%	498
BM	60°	6.6%	409
BH	80°	0.4%	26
BVH	90°	0%	2

#### UPLIGHT

UL	100°	0%	0
UH	180°	0%	0



Mounting Height	Multiplier
10	4.000
15	1.778
20	1.000
25	0.640
30	0.444
35	0.327
40	0.250
45	0.198
50	0.160

UPLIGHT 0%  
DOWNLIGHT 100%

20' MOUNTING HEIGHT

AAL reserves the right to change product specifications without notice.

[IES files can be found at www.aal.net](http://www.aal.net)



ARCHITECTURAL AREA LIGHTING  
16555 East Gale Ave. | City of Industry | CA 91745  
P 626.968.5666 | F 626.369.2695 | [www.aal.net](http://www.aal.net)  
Copyright © 2012 | REV 2.15