

SP1-LK – Spectra Large Scale – LED Upgrade Kits

TYPE

- Reliable, efficient operation
- Type 2, 3, 4, 5 distributions
- 3000K, 4200K and 51v00K CCT
- Integral surge protection
- 13 standard powder coat finishes
- IP66 optics



SP1

1. UPGRADE KIT	2. OPTICAL SYSTEM	3. COLOR TEMPERATURE	4. DRIVER
SP1-LK			

1. UPGRADE KIT

SP1-LK Spectra 32 LED upgrade kit

2. OPTICAL SYSTEM

LED

Y2-32LED (Type 2)
Y3-32LED (Type 3)
Y4-32LED (Type 4)
Y5-32LED (Type 5)

3. COLOR TEMPERATURE

32LED-3K (Warm White, 3000K output)
32LED-4K (Neutral White, 4200K output)
32LED-5K (Bright White, 5100K output)

4. DRIVER (120 thru 277 volt) 550 (57 watts)

SPECIFICATIONS

OPTICAL MODULE

- Light emitting diode (LED) assembly shall be sealed to a die-cast anodized aluminum heat sink with an injection molded silicone rubber gasket and stainless steel bezel, IP66.
- LED optics shall be injection molded PMMA acrylic and be mounted to a metal printed circuit board with a uniform conformal coating over the panel surface and electrical features.

ELECTRICAL

- Upgrade kits shall accept 120 thru 277 50/60Hz input voltage, and have integral surge protection
- Existing luminaires may not have 0-10V control leads in place prior to the upgrade kit, consult factory for dimming and control solutions.
- Drivers shall be U.L. recognized, have a minimum starting temperature of -30°C and have a 0-10v dimming interface with a dimming range of 10-100%.
- Drivers shall have a power factor $\geq .90$ and THD of $\leq 20\%$ at full load with an inrush current maximum of <20.0 Amps maximum at 230VAC.
- Drivers shall not be compatible with current sourcing dimmers, consult factory for current list of known compatible dimming systems
- Approved dimmers include Lutron Diva AVTV, Lutron Nova NFTV and NTFTV.
- LifeShield™ shall be provided with all configurations for added protection in the event of abnormally excessively high ambient temperature conditions.
- Surge protector shall be U.L. recognized and have a surge current rating of 10,000 Amps using the industry standard 8/20uSec wave and surge rating of 372J.



ARCHITECTURAL AREA LIGHTING
16555 East Gale Ave. | City of Industry | CA 91745
P 626.968.5666 | F 626.369.2695 | www.aal.net
Copyright © 2012 | REV 7.16

JOB
TYPE
NOTES

INSTALLATION

- Existing luminaires shall be required to be taken down for disassembly of outer lens, optics and ballast.
- Estimated time for installation of the upgrade kit into an existing luminaire is 25 minutes.

SERVICING

- The electrical assembly shall be mounted to a prewired internal service tray and accessed by loosening two captive bolts and lifting off the top of the luminaire.

CERTIFICATION

Upgrade kits shall be listed with ETL for outdoor, wet location use, UL1598, UL 8750 and Canadian CSA Std. C22.2 no.250. IP65.

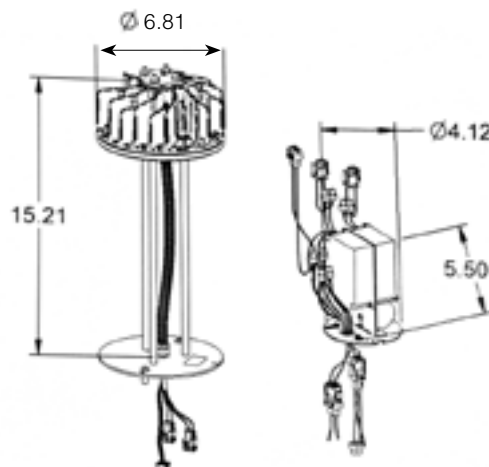
WARRANTY / TERMS AND CONDITIONS OF SALE

Download:

<http://www.hubbellighting.com/resources/warranty/>

AAL reserves the right to change product specifications without notice.

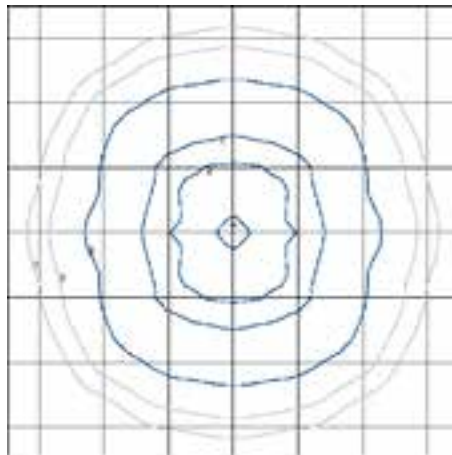
DIMENSIONS



PERFORMANCE DATA (32 LEDS, 550 MA DRIVE CURRENT, 57 WATTS)

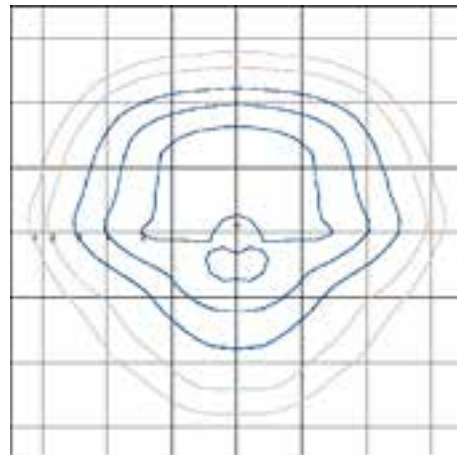
TYPE	LENS	5K					4K					3K					AMPS@ 120VAC	AMPS@ 277VAC
		LUMENS	LPW	B	U	G	LUMENS	LPW	B	U	G	LUMENS	LPW	B	U	G		
Y2	Clear (std.)	4129	72.4	1	2	1	3948	69.3	1	2	1	3041	53.4	1	2	1	0.5	0.2
Y3		3964	69.5	1	2	1	3790	66.5	1	2	1	2920	51.2	1	2	1		
Y4		4177	73.3	1	2	1	3994	70.1	1	2	1	3077	54.0	1	2	1		
Y5		3807	66.8	2	2	1	3640	63.9	2	2	1	2804	49.2	2	2	1		
CCT AVERAGE		5100K					4200K					3000K						
CCT RANGE		4600K-5600K					3800K-4600K					2800K-3175K						
CRI MINIMUM		≤70					≤70					≤80						

SP1-FLR-Y5-32LED-5K-550



12' MOUNTING HEIGHT

SP1-FLR-Y3-32LED-5K-550



12' MOUNTING HEIGHT

AMBIENT TEMP.	0	25,000	50,000	*TM-21-11 60,000	100,000	PROJECTED L70 (HRS)
25°C/ 77°F	100%	96%	94%	93%	90%	>60,000
40°C/ 104°F	100%	94%	91%	90%	86%	>60,000

IES files can be found at www.aal.net