

Universe® Bollard – UCB

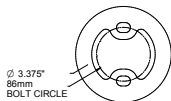
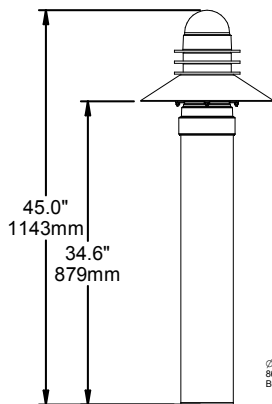
TYPE

- Modular system offers two hood options for customization to complement site design
- Glass refractor lens, IES Type 5 distribution
- Powder coat finish in 14 standard colors with a polymer primer sealer

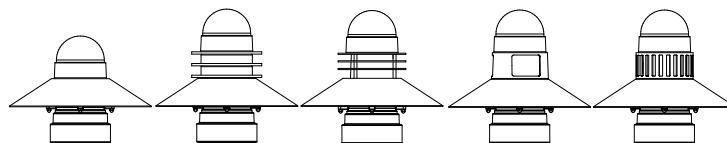


UCB

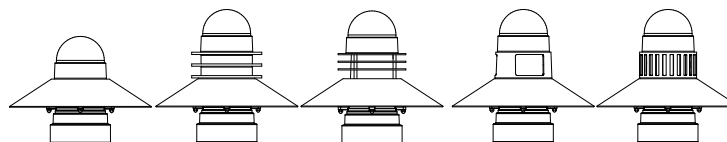
SPECIFICATIONS



3000K and warmer CCTs only

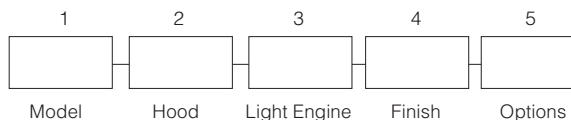


STRAIGHT HOOD CONFIGURATION	UCB-STR	UCB-LUM-STR	UCB-SR-STR	UCB-WND-STR	UCB-VSL-STR
HEIGHT	42.2" / 1072mm	45" / 1143mm	45" / 1143mm	45" / 1143mm	45" / 1143mm
DIAMETER	15.1" / 384mm	15.1" / 384mm	15.1" / 384mm	15.1" / 384mm	15.1" / 384mm
WEIGHT	27 lbs / 12.3kg	27 lbs / 12.3kg	27 lbs / 12.3kg	27 lbs / 12.3kg	27 lbs / 12.3kg



STRAIGHT HOOD CONFIGURATION	UCB-STR	UCB-LUM-STR	UCB-SR-STR	UCB-WND-STR	UCB-VSL-STR
HEIGHT	42.2" / 1072mm	45" / 1143mm	45" / 1143mm	45" / 1143mm	45" / 1143mm
DIAMETER	14.8" / 376mm	14.8" / 376mm	14.8" / 376mm	14.8" / 376mm	14.8" / 376mm
WEIGHT	27 lbs / 12.3kg	27 lbs / 12.3kg	27 lbs / 12.3kg	27 lbs / 12.3kg	27 lbs / 12.3kg

ORDERING CODE



1. MODEL

- UCB *No Element*
- UCB-LUM *Luminous Rings*
- UCB-SR *Solid Rings*
- UCB-WND *Windows*
- UCB-VSL *Vertical Slots*

2. HOOD

- STR *Straight, fixture finish*
- STR-STSS *Straight, brushed stainless*
- STR-COP *Straight, brushed copper*
- FLR *Flared, fixture finish*
- FLR-STSS *Flared, brushed stainless*
- FLR-COP *Flared, brushed copper*

2. LIGHT ENGINE

- 12LED-BW *5000K, 70CRI, 32W*
- 12LED-NW *4000K, 70CRI, 32W*
- 12LED-WW *3000K, 70CRI, 32W*

3. FINISH

- Standard Color**
- AGN *Antique Green*
 - BL *Black*
 - BLT *Matte Black*
 - CRT *Corten*
 - DB *Dark Bronze*
 - DGN *Dark Green*
 - GT *Graphite*
 - LG *Light Grey*
 - MAL *Matte Aluminum*
 - MDB *Bronze Metallic*
 - MG *Medium Grey*
 - TT *Titanium*
 - WH *Arctic White*
 - WDB *Weathered Bronze*
 - VBU *Verde Blue*
- Premium Color**
- SHK *Shamrock*
 - SPP *Salt and Pepper*
 - SFM *Seafoam*
 - WCP *Weathered Copper*
 - RAL *RAL 4 digit Color*
 - CUSTOM *Custom Color*

4. OPTIONS

- SLC *Unlit luminous element*



ARCHITECTURAL AREA LIGHTING
 17760 Rowland Street | City of Industry | CA 91748
 P 626.968.5666 | F 626.369.2695 | www.aal.net
 Copyright © 2017 | January 24, 2018 8:47 AM

JOB _____
 TYPE _____
 NOTES _____

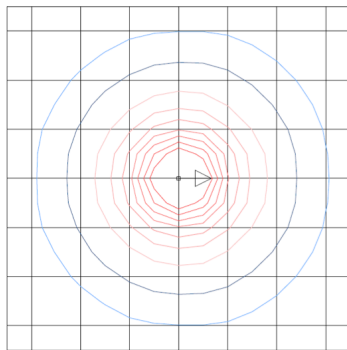
LUMINAIRE PERFORMANCE

Configuration			Ordering Code	12LED-WW			12LED-NW			12LED-WW								
System Watts	Luminous Element	Distribution		3000K			4000K			3000K								
			Delivered Lumens	Efficacy (lm/w)	BUG Rating			Delivered Lumens	Efficacy (lm/w)	BUG Rating								
					B	U	G			B	U	G						
33	(None)	Type V	BAC	703	21	1	0	1	663	20	1	0	1	509	15	0	0	1

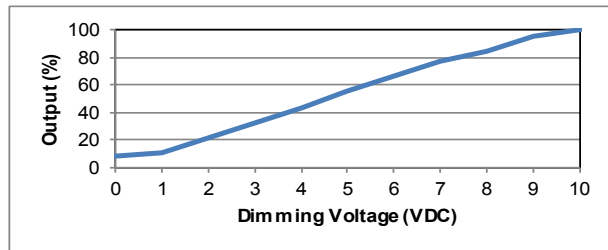
ELECTRICAL CHARACTERISTICS

Ordering Code		Line Input		AMPS AC	LED Drive (mA)	System Watts (W)	Min. Power Factor	Max THD (%)	Driver Operating Temp. Range (°C)	Inrush Current Peak	Dimming	
Model	Lumen Package	VAC	HZ								Dimming Range (V)	Source/Sink Current (mA)
BAC	12LED	120	50/60	0.28	700	33	≥.9	20	-30 to +40	<15.0 AMPS MAX @ 230 VAC	0-10	0-2
		208		0.16								
		240		0.14								
		277		0.12								

ISOLINE TEMPLATE



DIMMING CURVE



SPECIFICATIONS

HOUSING

- All housing components shall be cast aluminum A356 alloy, sealed with continuous silicone rubber gaskets.
- All internal and external hardware shall be stainless steel.

OPTICAL

- LEDs shall be mounted to a metal printed circuit board assembly (MPCB).
- LED optics shall be clear injection molded PMMA acrylic.

MOUNTING

- Fixture shall slip over two 1/2" x 10" x 2" anchor bolts supported by hex nuts and washers to level fixture.
- Provision for water drainage at footing is recommended.

ELECTRICAL

- Luminaires shall have integral surge protection that shall be U.L. recognized and have a surge current rating of 10,000 Amps using the industry standard 8/20uSec wave and surge rating of 372J.
- Drivers shall be U.L. recognized.
- Drivers shall not be compatible with current sourcing dimmers, consult factory for current list of known compatible dimming systems, approved dimmers include Lutron Diva AVTV, Lutron Nova NFTV and NTFTV.

SERVICING

- Luminaire shall have tool-less service access to the gear compartment. Driver and surge suppressor shall be mounted to a prewired tray with quick disconnects that may be removed from the gear compartment.

FINISH

- Luminaire finish shall consist of a five stage pretreatment regimen with a polymer primer sealer, oven dry off, and top coated with a thermoset super TGIC polyester powder coat finish.
- Luminaire finish shall meet the AAMA 605.2 performance specification which includes passing a 3000 hour salt spray test for corrosion resistance.

CERTIFICATION

- Luminaire shall be listed with ETL for outdoor, wet location use, UL1598, UL 8750 and Canadian CSA Std. C22.2 no.250

WARRANTY / TERMS AND CONDITIONS OF SALE

Download:

<http://www.hubbellighting.com/resources/warranty/>