

DATE: \_\_\_\_\_ LOCATION: \_\_\_\_\_  
 TYPE: \_\_\_\_\_ PROJECT: \_\_\_\_\_  
 CATALOG #: \_\_\_\_\_

## FEATURES

- Reliable, uniform, glare free illumination
- Types II, III, IV, V and custom distributions
- 3000K, 4000K, 5000K CCT
- 0-10V dimming ready
- Integral surge suppression
- 15 standard powder coat finishes
- Upgrade Kits



## SPECIFICATIONS

### CONSTRUCTION

- All housing components aluminum 360 alloy, sealed with continuous silicone rubber gaskets
- Standard configurations do not require a flat lens, optional lenses is tempered glass
- All internal and external hardware is stainless steel
- Finish: fade and abrasion resistant, electrostatically applied, thermally cured, triglycidal isocyanurate (TGIC) polyester powdercoat
- Optical bezel finish is match the luminaire housing

### LED/OPTICS

- Optical cartridge system consisting of a die cast heat sink, LED engine, TIR optics, gasket and bezel plate.
- Cartridge is easily disassembled to replace components. Optics are held in place without the use of adhesives.
- Molded silicone gasket ensures a weather-proof seal around each individual LED.
- Features revolutionary individual LED optical control based on high performance TIR optical designs.
- House Side Shield is available on Standard and Clear Lens options except any Type 5 distribution. House Side Shield is not available for any distribution using a Diffused Lens.

### INSTALLATION

- Fixtures must be grounded in accordance with national, state and/or local electrical codes. Failure to do so may result in serious personal injury.

### ELECTRICAL

- Luminaires have integral surge protection, UL recognized and have a surge current rating of 10,000 Amps using the industry standard 8/20uSec wave and surge rating of 372J
- Drivers are UL recognized with an inrush current maximum of <20.0 Amps maximum at 230VAC
- Drivers are not be compatible with current sourcing dimmers, consult factory for current list of known compatible dimming systems, approved dimmers include Lutron Diva AVTV, Lutron Nova NFTV and NTFTV
- Driver and surge suppressor are mounted to a prewired tray with quick disconnects that may be removed from the gear compartment

### CONTROLS

- Egress adapter(s) shall slip over a 4"/100mm DIA. pole with the luminaire or arm slipping over the adapter to add a total of 4.5"/114mm to the overall height. Adapter(s) shall be prewired, independently rotatable 359°, and have a cast access cover with an integral lens and lanyard.
- Photocell adapter shall include an internal twist lock receptacle. Photocell by others.
- Egress adapter shall require an auxiliary 120 volt supply for operation of an integral MR16 lamp in the event of emergency. The lamp may be aimed and locked into position with an adjustment range of 15°-45°. Adapter shall have a socket that accepts miniature bi-pin MR16 lamps up to 50 watts, lamp by others

### CERTIFICATIONS

- ETL listed under UL 1598 and CSA C22.2 No. 250.0-08 for wet locations

### WARRANTY

- See [HLI Standard Warranty](#) for additional information

KEY DATA	
LUMEN RANGE	3,721-19,516
WATTAGE RANGE	75.7-160.4
EFFICACY RANGE (LPW)	43.3-137.3
INPUT CURRENT RANGE (mA)	335/500/700 mA
WEIGHT	47 lbs 21.3 kg to 56 lbs 25.4 kg
EPA	1.05 to 1.95

## UNIVERSE®



Universe Large

### RELATED PRODUCTS

[UCM2](#)

[UCL2LK](#)

[UCS](#)

[UCB](#)

**ORDERING GUIDE**

**Example:** UCL2-WND-BLU-FLR-36L-420-4K7-2-CL-BL-WIRSC-SLA2-D-UNV

CATALOG #

**HOUSING**

UCL2		LED Quantity		Lumen output		CCT/CRI		Distribution		Finish	
<b>UCL2</b>	Universe Large 2.0	<b>72L</b>	72 LED	<b>310</b>	450mA Microcore Crossover	<b>5K7</b>	5000K, 70 CRI	<b>1</b>	Type I	<b>AGN</b>	Antique Green
<b>Optional Element</b>				<b>335</b>	335mA, 10000 Lumens	<b>4K7</b>	4000K, 70 CRI	<b>2</b>	Type II	<b>BL</b>	Black
<b>WND</b>	Universe Medium with Luminous Window			<b>480</b>	700mA Microcore Crossover	<b>3K7</b>	3000K, 70 CRI	<b>3</b>	Type III	<b>BLT</b>	Matte Black
<b>SR</b>	Universe Medium with Luminous Solid Rings			<b>500</b>	500mA, 14000 Lumens	<b>AMB</b>	Amber-595nm Peak <sup>1</sup>	<b>4W</b>	Type IV Wide	<b>CRT</b>	Corton
<b>VSL</b>	Universe Medium with Luminous Vertical Slots			<b>700</b>	700mA, 19000 Lumens			<b>5Q</b>	Type V Square	<b>DB</b>	Dark Bronze
<b>LUM</b>	Universe Medium with Luminous Rings							<b>5W</b>	Type V Wide	<b>DGN</b>	Dark Green
<b>Optional Intenal Lens</b>										<b>GT</b>	Graphite
<b>BLU</b>	Blue									<b>LG</b>	Light Gray
<b>RD</b>	Red									<b>MAL</b>	Matte Aluminum
<b>GRN</b>	Green									<b>MDB</b>	Metallic Bronze
<b>Hood Syle</b>										<b>MG</b>	Medium Gray
<b>ANG</b>	Angled Hood									<b>TT</b>	Titanium
<b>BEL</b>	Bell Hood									<b>VBU</b>	Verde Blue
<b>FLR</b>	Flared Hood									<b>WDB</b>	Weathered Blue
<b>SKB</b>	Skirted Bell Hood									<b>WH</b>	White
<b>STR</b>	Straight Hood									<b>CC</b>	Custom Color <sup>4</sup>
<b>Hood Finish</b>											
<b>STS</b>	Stainless Steel										
<b>COP</b>	Copper										

Mounting		Optional Lens		Options		Mounting Options		Voltage	
<b>Pole Mount</b>		<b>CL</b>	Clear Lens	<b>HS</b>	House Side Shield <sup>2</sup>	<b>PCA-C</b>	Photocontrol Adaptor Contemporary	<b>UNV</b>	120-277V
SLA2-D	SLA18	<b>DL</b>	Diffused Lens <sup>2</sup>	<b>SLC</b>	Solid Lens Cover	<b>EPA-C</b>	Egress Adaptor Contemporary	<b>347</b>	347V
SLA3	SLA20			<b>SF</b>	Single Fuse (120, 277, 347)			<b>480</b>	480V
SLA4	SLA20A			<b>DF</b>	Double Fuse (208, 240, 480)				
SLA7	SLA22D								
SLA8D	SLA24								
SLA9	TRA7								
SLA10	TRA8								
SLA16	TRA9								
SLA17									
<b>Wall Mount</b>									
WMA5	WMA17								
WMA9D	WMA20								
WMA11	WMA24								
WMA12	WMA39								
WMA16									

**DIMENSIONS**

Notes:  
See page 6 for dimensions

Notes:

- Wild life friendly
- Diffused Lens is available only with T3 and T5W distribution
- House side Shield is available only with T1, T2, T3 and T4W distributions
- Consult factory

**DELIVERED LUMENS**

The table below shows the delivered lumens for the various lumen outputs and beam distributions. Use this chart in connection with the lumen factor (LF) capability to deliver any output required.

LED #	Drive Current	Lumen Package	Lens	Distribution	3000K 70CRI				4000K 70CRI				5000K 70CRI							
					Lumen	Bug Rating			Efficacy (Lm/W)	Lumen	Bug Rating			Efficacy (Lm/W)	Lumen	Bug Rating			Efficacy (Lm/W)	
72	310	450mA Microcore Crossover	None	1	8970	1	0	1	128.4	9378	1	0	1	134.2	9755	1	0	1	139.6	
				2	8440	1	0	2	120.8	8823	1	0	2	126.3	9178	2	0	2	131.4	
				3	8178	1	0	2	117.1	8549	1	0	2	122.4	8893	1	0	2	127.3	
				4W	8177	1	0	3	117.0	8548	1	0	3	122.4	8892	1	0	3	127.3	
				1-HS	5194	0	0	0	74.3	5430	0	0	0	77.7	5648	0	0	0	80.8	
				2-HS	4203	0	0	1	60.2	4394	0	0	1	62.9	4570	0	0	1	65.4	
				3-HS	4033	0	0	1	57.7	4216	0	0	1	60.3	4385	0	0	1	62.8	
			Clear	4W-HS	4039	0	0	1	57.8	4223	0	0	1	60.5	4393	0	0	1	62.9	
				5Q	8550	3	0	1	122.4	8939	3	0	1	128.0	9298	3	0	1	133.1	
				5W	8012	3	0	2	114.7	8376	3	0	2	119.9	8713	3	0	2	124.7	
				1-CL	7729	1	0	1	110.6	8080	1	0	1	115.7	8405	1	0	1	120.3	
				2-CL	7272	1	0	1	104.1	7602	1	0	2	108.8	7908	1	0	2	113.2	
				3-CL	7046	1	0	2	100.9	7366	1	0	2	105.4	7662	1	0	2	109.7	
				4W-CL	7045	1	0	3	100.8	7365	1	0	3	105.4	7661	1	0	3	109.7	
	Diffused	1-CL-HS	4475	0	0	0	64.1	4678	0	0	0	67.0	4866	0	0	0	69.7			
		2-CL-HS	3621	0	0	1	51.8	3786	0	0	1	54.2	3938	0	0	1	56.4			
		3-CL-HS	3474	0	0	1	49.7	3632	0	0	1	52.0	3778	0	0	1	54.1			
		4W-CL-HS	3480	0	0	1	49.8	3639	0	0	1	52.1	3785	0	0	1	54.2			
		5Q-CL	7367	2	0	1	105.5	7702	3	0	1	110.2	8011	3	0	1	114.7			
		5W-CL	6903	3	0	1	98.8	7217	3	0	1	103.3	7507	3	0	1	107.5			
		3-DL	5322	1	0	1	76.2	5564	1	0	1	79.6	5788	1	0	1	82.8			
	5W-DL	5214	2	0	1	74.6	5451	2	0	1	78.0	5670	2	0	1	81.2				
	335	10000		None	1	9606	1	0	1	126.8	10042	1	0	1	132.6	10446	1	0	1	137.3
					2	9037	1	0	2	119.3	9448	2	0	2	124.7	9828	2	0	2	129.0
					3	8757	1	0	2	115.9	9155	1	0	2	120.8	9523	1	0	2	125.3
					4W	8756	1	0	3	115.6	9154	1	0	3	120.8	9522	1	0	3	125.4
					1-HS	5562	0	0	0	73.4	5814	0	0	0	76.8	6048	0	0	0	80.0
					2-HS	4500	0	0	1	59.4	4705	0	0	1	62.1	4894	0	0	1	64.9
3-HS					4318	0	0	1	57.0	4515	0	0	1	59.6	4696	0	0	1	62.3	
Clear				4W-HS	4326	0	0	1	57.1	4522	0	0	1	59.7	4704	0	0	1	62.3	
				5Q	9156	3	0	1	120.9	9572	3	0	1	126.4	9957	3	0	1	131.5	
				5W	8580	3	0	2	113.3	8969	3	0	2	118.4	9330	3	0	2	123.1	
				1-CL	8276	1	0	1	109.5	8652	1	0	1	114.5	9000	1	0	1	119.1	
				2-CL	7787	1	0	2	103.1	8141	1	0	2	107.7	8468	1	0	2	112.1	
				3-CL	7545	1	0	2	99.9	7888	1	0	2	104.4	8205	1	0	2	108.6	
				4W-CL	7544	1	0	3	99.8	7887	1	0	3	104.4	8204	1	0	3	108.6	
Diffused		1-CL-HS	4792	0	0	0	63.4	5010	0	0	0	66.3	5211	0	0	0	69.0			
		2-CL-HS	3877	0	0	1	51.3	4054	0	0	1	53.6	4217	0	0	1	55.8			
		3-CL-HS	3721	0	0	1	49.2	3890	0	0	1	51.5	4046	0	0	1	53.5			
		4W-CL-HS	3727	0	0	1	49.3	3896	0	0	1	51.6	4053	0	0	1	53.6			
		5Q-CL	7889	3	0	1	104.4	8247	3	0	1	109.2	8579	3	0	1	113.5			
		5W-CL	7392	3	0	1	97.8	7728	3	0	1	102.3	8039	3	0	2	106.4			
		3-DL	5992	1	0	1	79.2	6264	1	0	1	82.8	6516	1	0	1	86.4			
5W-DL		5297	2	0	1	70.0	5537	2	0	1	73.1	5760	2	0	1	73.6				

**DELIVERED LUMENS (CONTINUED)**

The table below shows the delivered lumens for the various lumen outputs and beam distributions. Use this chart in connection with the lumen factor (LF) capability to deliver any output required.

LED #	Drive Current	Lumen Package	Lens	Distribution	3000K 70CRI				4000K 70CRI				5000K 70CRI							
					Lumen	Bug Rating			Efficacy (Lm/W)	Lumen	Bug Rating			Efficacy (Lm/W)	Lumen	Bug Rating			Efficacy (Lm/W)	
72	480	700mA Microcore Crossover	None	1	13144	1	0	1	118.8	13742	1	0	1	124.2	14294	2	0	1	129.2	
				2	12367	2	0	2	111.7	12929	2	0	2	116.8	13448	2	0	2	121.5	
				3	11983	2	0	2	108.3	12527	2	0	3	113.2	13031	2	0	3	117.7	
				4W	11982	2	0	3	108.3	12526	2	0	3	113.2	13030	2	0	3	117.7	
				1-HS	7610	0	0	0	68.8	7956	0	0	0	71.9	8276	0	0	0	74.8	
				2-HS	6158	0	0	1	55.6	6438	0	0	1	58.2	6697	0	0	1	60.5	
				3-HS	5909	0	0	1	53.4	6178	0	0	2	55.8	6426	0	0	2	58.1	
			Clear	4W-HS	5919	1	0	2	53.5	6188	1	0	2	55.9	6437	1	0	2	58.2	
				5Q	12529	3	0	1	113.2	13098	3	0	1	118.4	13625	3	0	1	123.1	
				5W	11740	4	0	2	106.1	12274	4	0	2	110.9	12767	4	0	2	115.4	
				1-CL	11325	1	0	1	102.3	11840	1	0	1	107.0	12316	1	0	1	111.3	
				2-CL	10655	2	0	2	96.3	11139	2	0	2	100.7	11587	2	0	2	104.7	
				3-CL	10324	2	0	2	93.3	10794	2	0	2	97.5	11227	2	0	2	101.5	
				4W-CL	10323	1	0	3	93.3	10792	1	0	3	97.5	11226	1	0	3	101.4	
	Diffused	1-CL-HS	6557	0	0	0	59.2	6855	0	0	0	61.9	7131	0	0	0	64.4			
		2-CL-HS	5306	0	0	1	47.9	5547	0	0	1	50.1	5770	0	0	1	52.1			
		3-CL-HS	5091	0	0	1	46.0	5323	0	0	1	48.1	5537	0	0	1	50.0			
		4W-CL-HS	5100	0	0	1	46.1	5332	1	0	1	48.2	5546	1	0	2	50.1			
		5Q-CL	10795	3	0	1	97.5	11286	3	0	1	102.0	11739	3	0	1	106.1			
	500	14000		None	3-DL	7798	2	0	1	70.4	8153	2	0	2	73.6	8481	2	0	2	76.6
					5W-DL	7640	2	0	1	69.0	7988	3	0	1	72.2	8309	3	0	1	75.1
					1	13600	1	0	1	117.7	14218	2	0	1	123.0	14790	2	0	1	128.0
					2	12796	2	0	2	110.7	13377	2	0	2	115.7	13915	2	0	2	120.4
					3	12398	2	0	3	107.3	12962	2	0	3	112.2	13483	2	0	3	116.7
					4W	12397	2	0	3	107.3	12961	2	0	3	112.1	13482	2	0	3	116.7
					1-HS	7874	0	0	0	68.1	8232	0	0	0	71.2	8563	0	0	0	74.1
				Clear	2-HS	6372	0	0	1	55.1	6661	0	0	1	57.6	6929	0	0	1	60.0
					3-HS	6114	0	0	1	52.9	6392	0	0	2	55.3	6649	0	0	2	57.5
4W-HS					6124	1	0	2	53.0	6403	1	0	2	55.4	6660	1	0	2	57.6	
5Q					12964	3	0	1	112.2	13553	3	0	1	117.3	14097	3	0	2	122.0	
5W					12147	4	0	2	105.1	12699	4	0	2	109.9	13210	4	0	2	114.3	
1-CL					11718	1	0	1	101.4	12250	1	0	1	106.0	12743	1	0	1	110.3	
2-CL					11025	2	0	2	95.4	11526	2	0	2	99.7	11989	2	0	2	103.7	
Diffused	3-CL	10682	2	0	2	92.4	11168	2	0	2	96.6	11617	2	0	2	100.5				
	4W-CL	10681	1	0	3	92.4	11167	1	0	3	96.6	11616	2	0	3	100.5				
	1-CL-HS	6784	0	0	0	58.7	7093	0	0	0	61.4	7378	0	0	0	63.8				
	2-CL-HS	5490	0	0	1	47.5	5739	0	0	1	49.7	5970	0	0	1	51.7				
	3-CL-HS	5268	0	0	1	45.6	5507	0	0	1	47.7	5729	0	0	1	49.6				
	4W-CL-HS	5277	1	0	1	45.7	5517	1	0	2	47.7	5738	1	0	2	49.7				
	5Q-CL	11169	3	0	1	96.6	11677	3	0	1	101.0	12146	3	0	1	105.1				
	5W-CL	10466	3	0	2	90.6	10942	4	0	2	94.7	11381	4	0	2	98.5				
	3-DL	8069	2	0	2	69.8	8436	2	0	2	73.0	8775	2	0	2	75.9				
	5W-DL	7905	3	0	1	68.4	8265	3	0	1	71.5	8597	3	0	1	74.4				

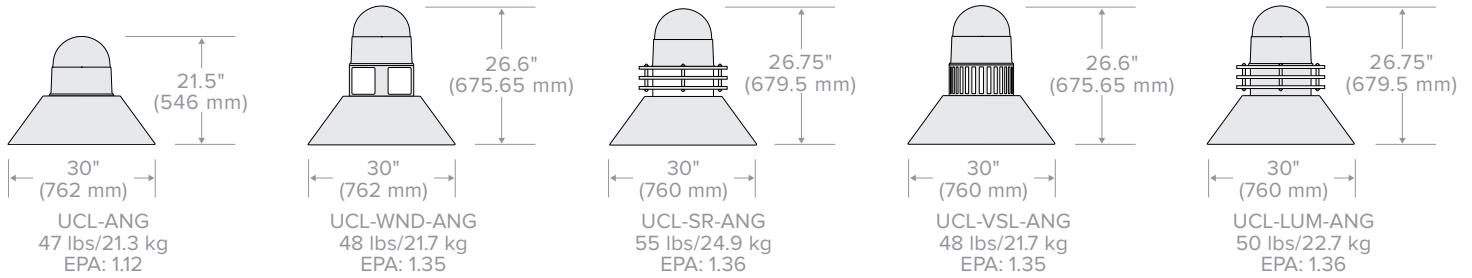
**DELIVERED LUMENS (CONTINUED)**

The table below shows the delivered lumens for the various lumen outputs and beam distributions. Use this chart in connection with the lumen factor (LF) capability to deliver any output required.

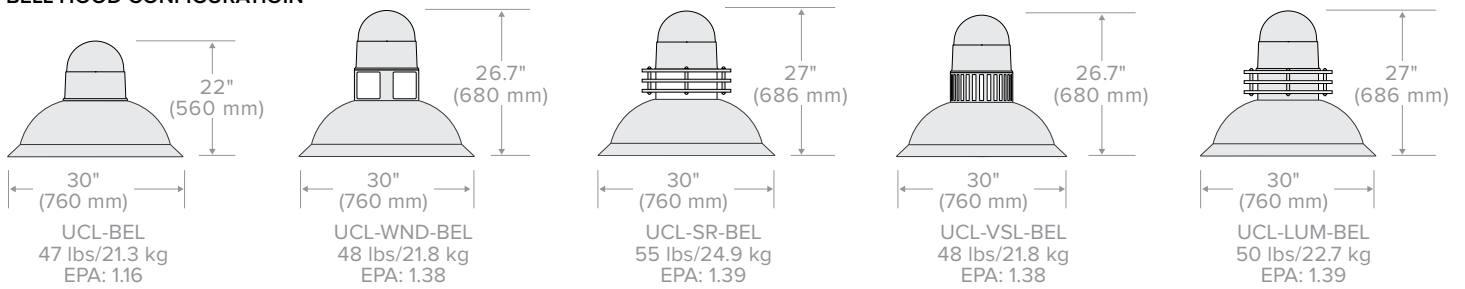
LED #	Drive Current	Lumen Package	Lens	Distribution	3000K 70CRI				4000K 70CRI				5000K 70CRI						
					Lumen	Bug Rating			Efficacy (Lm/W)	Lumen	Bug Rating			Efficacy (Lm/W)	Lumen	Bug Rating			Efficacy (Lm/W)
72	700	19000	None	1	17947	2	0	1	111.9	18762	2	0	1	117.0	19516	2	0	1	121.7
				2	16885	2	0	2	105.3	17652	2	0	2	110.1	18362	3	0	3	114.5
				3	16361	2	0	3	102.0	17104	2	0	3	106.6	17792	2	0	3	110.9
				4W	16359	2	0	4	102.0	17103	2	0	4	106.6	17790	2	0	4	110.9
				1-HS	10391	0	0	0	64.8	10863	1	0	0	67.7	11300	1	0	1	70.4
				2-HS	8408	1	0	1	52.4	8790	1	0	1	54.8	9144	1	0	1	57.0
				3-HS	8068	1	0	2	50.3	8435	1	0	2	52.6	8774	1	0	2	54.7
				4W-HS	8082	1	0	2	50.4	8449	1	0	2	52.7	8789	1	0	2	54.8
				5Q	17106	4	0	2	106.6	17884	4	0	2	111.5	18603	4	0	2	116.0
				5W	16029	4	0	2	99.9	16758	4	0	2	104.5	17431	4	0	2	108.7
			Clear	1-CL	15463	2	0	1	96.4	16166	2	0	1	100.8	16815	2	0	1	104.8
				2-CL	14548	2	0	2	90.7	15209	2	0	2	94.8	15821	2	0	2	98.6
				3-CL	14096	2	0	3	87.9	14737	2	0	3	91.9	15330	2	0	3	95.6
				4W-CL	14095	2	0	3	87.9	14736	2	0	3	91.9	15328	2	0	3	95.6
				1-CL-HS	8953	0	0	0	55.8	9359	0	0	0	58.4	9736	0	0	0	60.7
				2-CL-HS	7244	1	0	1	45.2	7574	1	0	1	47.2	7878	1	0	1	49.1
				3-CL-HS	6951	0	0	2	43.3	7267	1	0	2	45.3	7559	1	0	2	47.1
				4W-CL-HS	6963	1	0	2	43.4	7280	1	0	2	45.4	7572	1	0	2	47.2
			Diffused	5Q-CL	14739	3	0	2	91.9	15409	4	0	2	96.1	16028	4	0	2	99.9
				5W-CL	13811	4	0	2	86.1	14438	4	0	2	90.0	15019	4	0	2	93.6
3-DL	10648	2		0	2	66.4	11132	2	0	2	69.4	11579	2	0	2	72.2			
5W-DL	10432	3		0	2	65.0	10906	3	0	2	68.0	11344	3	0	2	70.7			

**DIMENSIONS**

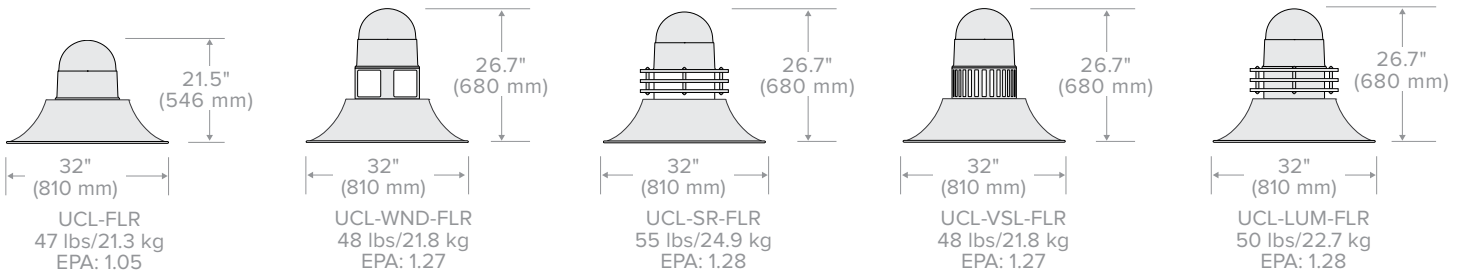
**ANGLED HOOD CONFIGURATION**



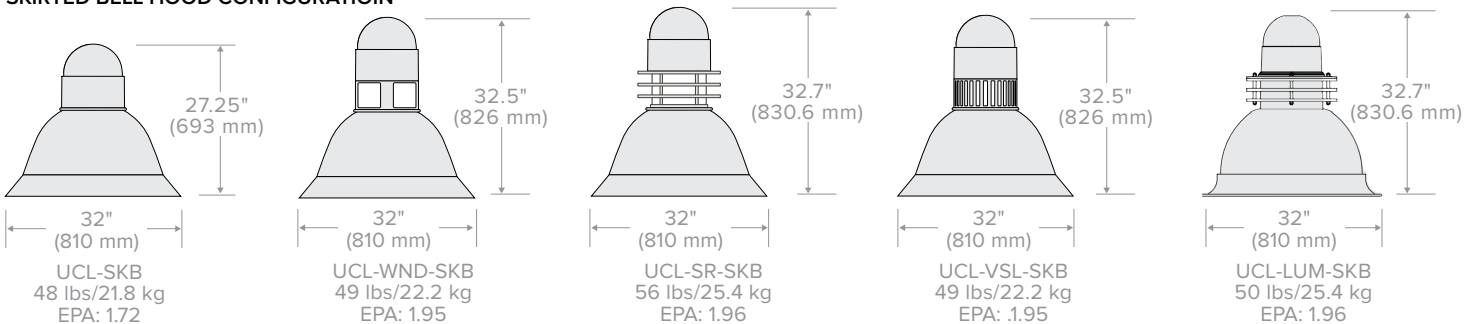
**BELL HOOD CONFIGURATION**



**FLARE HOOD CONFIGURATION**



**SKIRTED BELL HOOD CONFIGURATION**



**PHOTOMETRY**

**UCL2-ANG-72L-700-4K7-1**

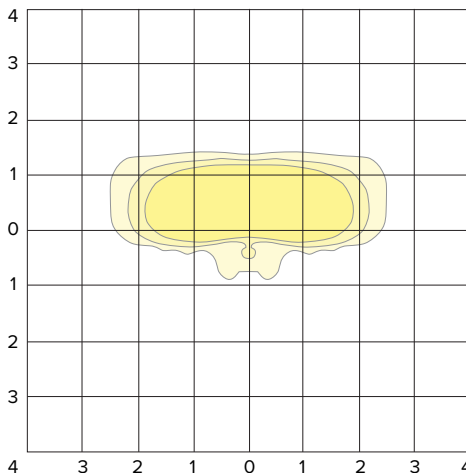
**LUMINAIRE DATA**

Description	<b>4000 Kelvin, 70CRI</b>
Delivered Lumens	<b>18,762</b>
Watts	<b>160.4</b>
Efficacy	<b>117.0</b>
IES Type	<b>I</b>
BUG Rating	<b>B2-U0-G1</b>
Mounting Height	<b>30 ft</b>
Grid Scale	<b>30 ft</b>

**ZONAL LUMEN SUMMARY**

Zone	Lumens	% Luminaire
Downward Street Side	16473	88%
Downward House Side	2289	12%
Downward Total	18762	100%
Upward Street Side	0	0%
Upward House Side	0	0%
Upward Total	0	0%
Total Flux	18762	100%

**ISOFOOT CANDLE PLOT**



10' Mounting Height

- 1.0 FC
- 0.5 FC
- 0.2 FC

**UCL2-ANG-72L-700-4K7-2**

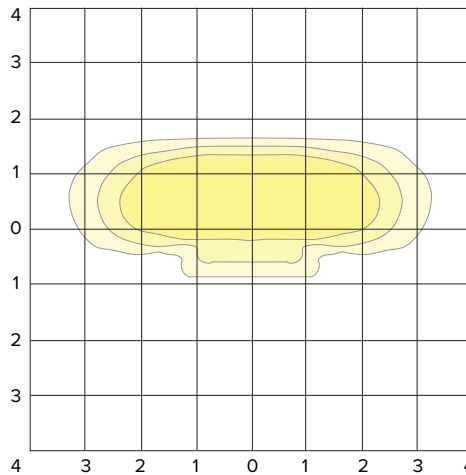
**LUMINAIRE DATA**

Description	<b>4000 Kelvin, 70CRI</b>
Delivered Lumens	<b>17,652</b>
Watts	<b>160.4</b>
Efficacy	<b>110.0</b>
IES Type	<b>II</b>
BUG Rating	<b>B2-U0-G2</b>
Mounting Height	<b>30 ft</b>
Grid Scale	<b>30 ft</b>

**ZONAL LUMEN SUMMARY**

Zone	Lumens	% Luminaire
Downward Street Side	14521	82%
Downward House Side	3131	18%
Downward Total	17652	100%
Upward Street Side	0	0%
Upward House Side	0	0%
Upward Total	0	0%
Total Flux	17652	100%

**ISOFOOT CANDLE PLOT**



30' Mounting Height

- 1.0 FC
- 0.5 FC
- 0.2 FC

**UCL2-ANG-72L-700-4K7-3**

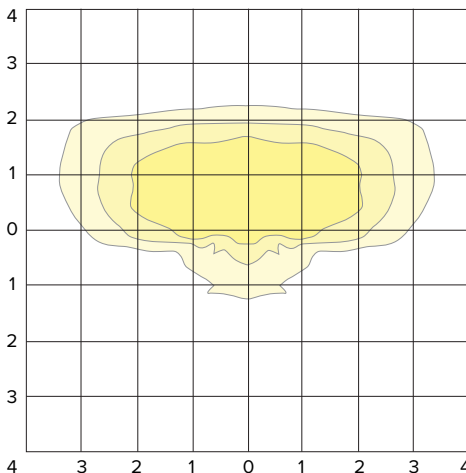
**LUMINAIRE DATA**

Description	<b>4000 Kelvin, 70CRI</b>
Delivered Lumens	<b>17,105</b>
Watts	<b>160.4</b>
Efficacy	<b>106.6</b>
IES Type	<b>III</b>
BUG Rating	<b>B2-U0-G3</b>
Mounting Height	<b>30 ft</b>
Grid Scale	<b>30 ft</b>

**ZONAL LUMEN SUMMARY**

Zone	Lumens	% Luminaire
Downward Street Side	14403	84%
Downward House Side	2702	16%
Downward Total	17105	100%
Upward Street Side	0	0%
Upward House Side	0	0%
Upward Total	0	0%
Total Flux	17105	100%

**ISOFOOT CANDLE PLOT**



30' Mounting Height

- 1.0 FC
- 0.5 FC
- 0.2 FC

**PHOTOMETRY**

**UCL2-ANG-72L-700-4K7-4W**

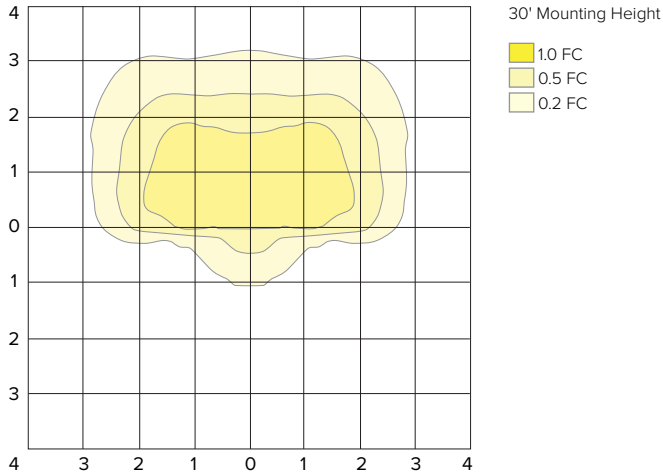
**LUMINAIRE DATA**

Description	<b>4000 Kelvin, 70CRI</b>
Delivered Lumens	<b>17103</b>
Watts	<b>160.4</b>
Efficacy	<b>106.6</b>
IES Type	<b>IV Wide</b>
BUG Rating	<b>B2-U0-G4</b>
Mounting Height	<b>30 ft</b>
Grid Scale	<b>30 ft</b>

**ZONAL LUMEN SUMMARY**

Zone	Lumens	% Luminaire
Downward Street Side	14997	88%
Downward House Side	2106	12%
Downward Total	17103	100%
Upward Street Side	0	0%
Upward House Side	0	0%
Upward Total	0	0%
Total Flux	17103	100%

**ISOFOOT CANDLE PLOT**



**UCL2-ANG-72L-700-4K7-5Q**

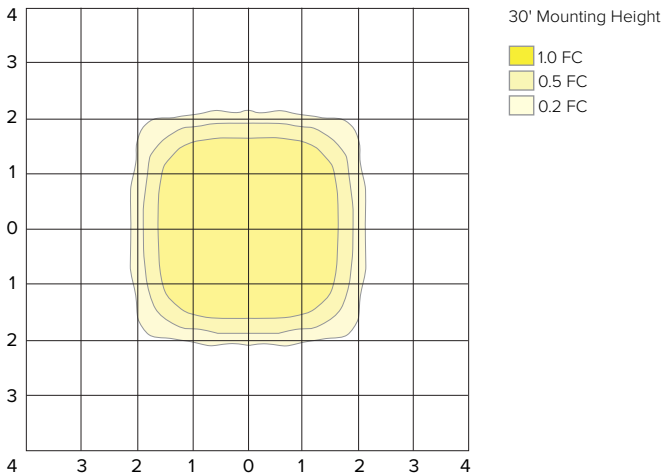
**LUMINAIRE DATA**

Description	<b>4000 Kelvin, 70CRI</b>
Delivered Lumens	<b>17884</b>
Watts	<b>160.4</b>
Efficacy	<b>111.5</b>
IES Type	<b>VS</b>
BUG Rating	<b>B4-U0-G2</b>
Mounting Height	<b>30 ft</b>
Grid Scale	<b>30 ft</b>

**ZONAL LUMEN SUMMARY**

Zone	Lumens	% Luminaire
Downward Street Side	8942	50%
Downward House Side	8942	50%
Downward Total	17884	100%
Upward Street Side	0	0%
Upward House Side	0	0%
Upward Total	0	0%
Total Flux	17884	100%

**ISOFOOT CANDLE PLOT**



**UCL2-ANG-72L-700-4K7-5W**

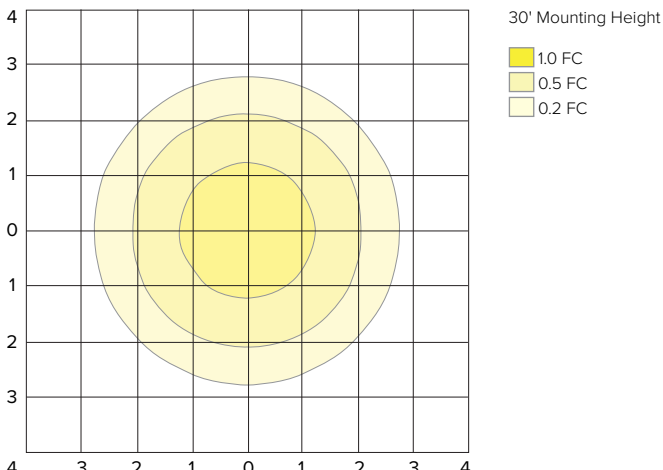
**LUMINAIRE DATA**

Description	<b>4000 Kelvin, 70CRI</b>
Delivered Lumens	<b>16758</b>
Watts	<b>160.4</b>
Efficacy	<b>104.5</b>
IES Type	<b>VS</b>
BUG Rating	<b>B4-U0-G2</b>
Mounting Height	<b>30 ft</b>
Grid Scale	<b>30 ft</b>

**ZONAL LUMEN SUMMARY**

Zone	Lumens	% Luminaire
Downward Street Side	8379	50%
Downward House Side	8379	50%
Downward Total	16758	100%
Upward Street Side	0	0%
Upward House Side	0	0%
Upward Total	0	0%
Total Flux	16758	100%

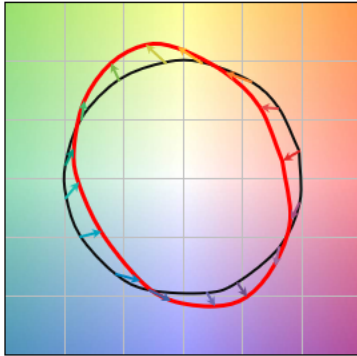
**ISOFOOT CANDLE PLOT**





**TM-30 DATA**

**COLOR VECTOR GRAPHIC**

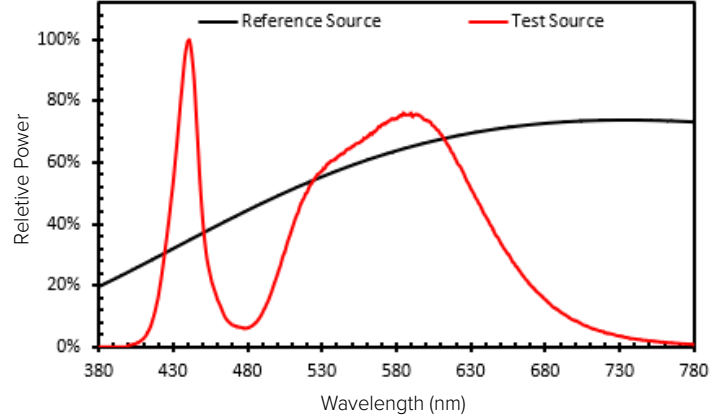


— Reference Illuminant — Test Source

**TEST SOURCE**

MBM TEST RESULTS	
CCT (K)	3947
CIE Ra	72
Duv	0.0004
x	0.3831
y	0.3793
Rf	68
Rg	99

**SPECTRAL POWER DISTRIBUTION COMPARISON**



**ELECTRICAL DATA**

Light Engine	Electrical										Dimming						
	System Current	System Watts	Line Voltage		Amps AC						Min. Power Factor	Max THD (%)	Dimming Range	Source current out of 0-10V		Absolute voltage range on 0-10V (+)	
			VAC	HZ	120	208	240	277	347	480				Min	Max	Min	Max
72	310 mA	69.9	120-480	50/60	0.58	0.34	0.29	0.25	0.20	0.15	>0.9	20	10% to 100%	0mA	1mA	0V	10V
	335 mA	75.7			0.63	0.36	0.32	0.27	0.22	0.16							
	480 mA	110.7			0.92	0.53	0.46	0.40	0.32	0.23							
	500 mA	115.6			0.96	0.56	0.48	0.42	0.33	0.24							
	700 mA	160.4			1.34	0.77	0.67	0.58	0.46	0.33							

TM-21 LIFETIME CALCULATION - PROJECTED LUMEN MAINTENANCE (25°C / 77°F)						
HOURS	0	25,000	36,000	50,000	100,000	REPORTED L70
Projected Lumen Maintenance	100%	98.0%	96.9%	95.5%	90.7%	> 60,000

AMBER MULTIPLIER	
CCT	MULTIPLIER
5000K	1
AM	0.1727

2700K MULTIPLIER	
CCT	MULTIPLIER
5000K	1
2700K	0.897

LENS OPTION MULTIPLIER	
CLEAR LENS	DIFFUSED LENS
0.8615	0.7098

**ADDITIONAL INFORMATION**

**PHOTOCELL / EGRESS ADAPTERS**

- Adapter(s) shall slip over a 4"/100mm DIA. pole with the luminaire or arm slipping over the adapter to add a total of 4.5"/114mm to the overall height. Adapter(s) shall be prewired, independently rotatable 359°, and have a cast access cover with an integral lens and lanyard.
- Photocell adapter shall include an internal twist lock receptacle. Photocell by others.
- Egress adapter shall require an auxiliary 120 volt supply for operation of an integral MR16 lamp in the event of emergency. The lamp may be aimed and locked into position with an adjustment range of 15°-45°. Adapter shall have a socket that accepts miniature bi-pin MR16 lamps up to 50 watts, lamp by others.

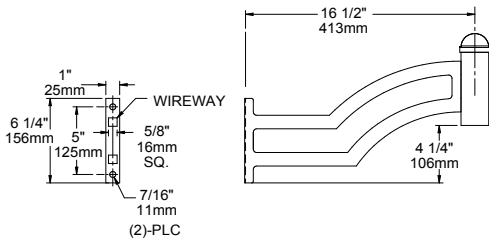
**ADDITIONAL INFORMATION CONTINUED**

**MOUNTING POLE OPTIONS**

SLA2-D

WT: 6 LBS

EPA: .30

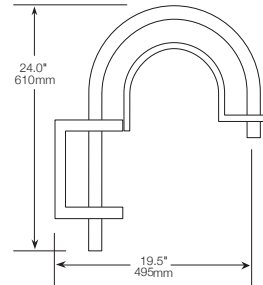


4" POLE

SLA3

WT: 8 LBS

EPA: .77

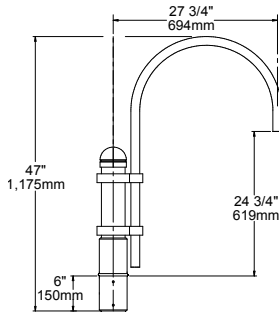


4" POLE

SLA4

WT: 14 LBS

EPA: 1.39

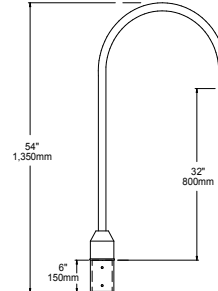


4" POLE

SLA7

WT: 9 LBS

EPA: 1.34

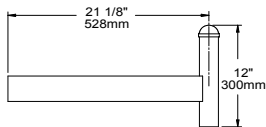


4" POLE

SLA8D

WT: 5 LBS

EPA: .40

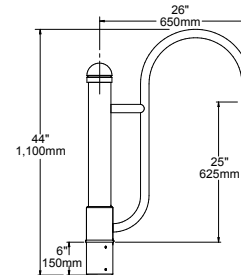


4" OR 5" POLE

SLA9

WT: 18 LBS

EPA: 1.90

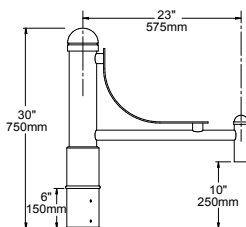


4" POLE

SLA10

WT: 9 LBS

EPA: 1.09

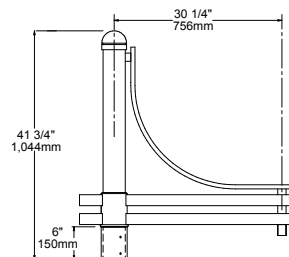


4" POLE

SLA16

WT: 18 LBS

EPA: 2.88

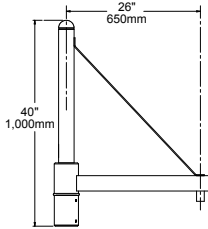


4" POLE

**ADDITIONAL INFORMATION CONTINUED**

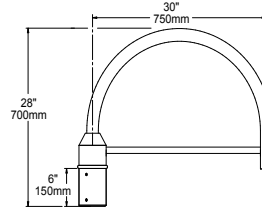
**MOUNTING POLE OPTIONS**

SLA17 WT: 18 LBS EPA: 1.50



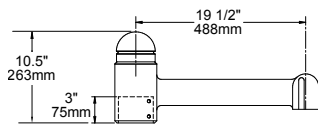
4" POLE

SLA18 WT: 12 LBS EPA: .85



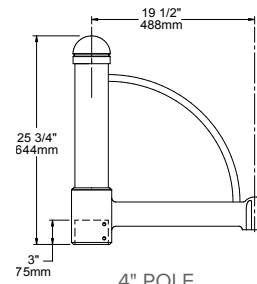
4" POLE

SLA20 WT: 10 LBS EPA: .70



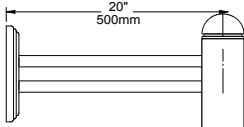
4" POLE

SLA20A WT: 15 LBS EPA: 1.30



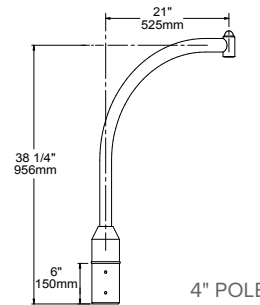
4" POLE

SLA22D WT: 4 LBS EPA: .44



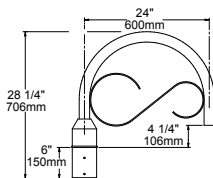
4" POLE

SLA24 WT: 9 LBS EPA: .85



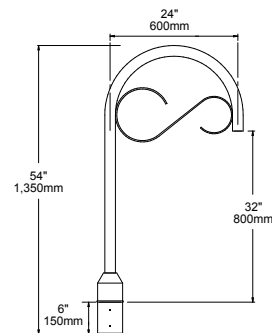
4" POLE

TRA7 WT: 12 LBS EPA: .90



4" POLE

TRA8 WT: 13 LBS EPA: 1.34



4" POLE

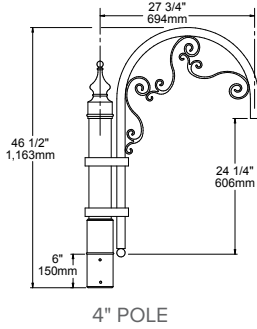
**ADDITIONAL INFORMATION CONTINUED**

**MOUNTING POLE OPTIONS**

TRA9

WT: 17 LBS

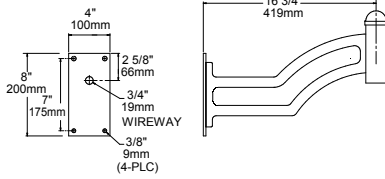
EPA: 1.90



**MOUNTING WALL OPTIONS**

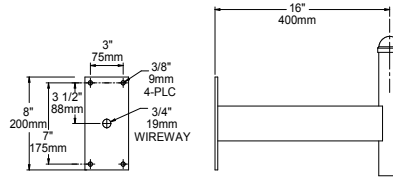
WMA5

WT: 6 LBS



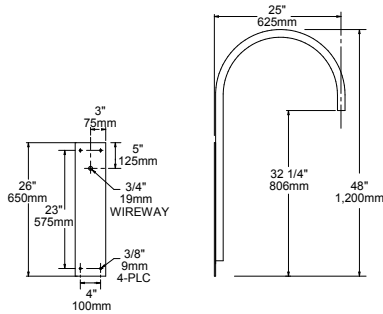
WMA9D

WT: 6 LBS



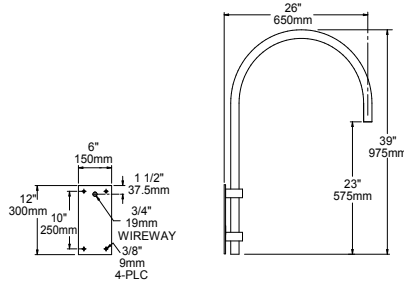
WMA11

WT: 10 LBS



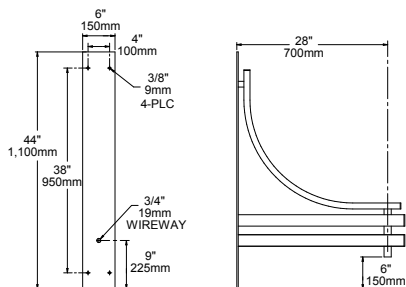
WMA12

WT: 12 LBS



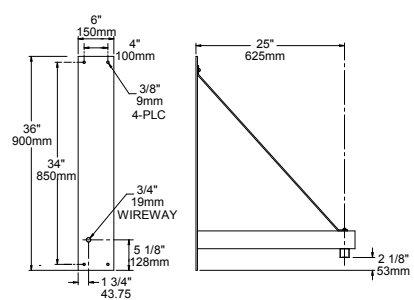
WMA16

WT: 22 LBS



WMA17

WT: 15 LBS

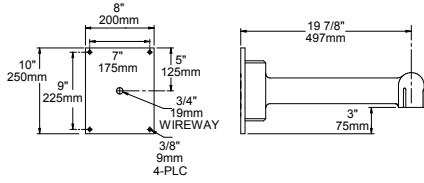


**ADDITIONAL INFORMATION CONTINUED**

**MOUNTING WALL OPTIONS**

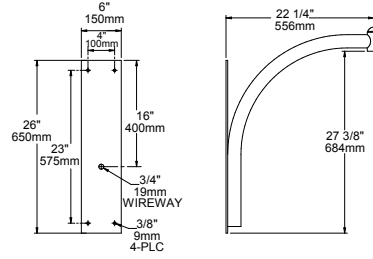
WMA20

WT: 12 LBS



WMA24

WT: 12 LBS



WMA39

WT: 14 LBS

