

DATE: _____ LOCATION: _____
 TYPE: _____ PROJECT: _____
 CATALOG #: _____

FEATURES

- Reliable, uniform, glare free illumination
- Types II, III, IV, V and custom distributions
- 3000K, 4000K, 5000K CCT
- 0-10V dimming ready
- Integral surge suppression
- 15 standard powder coat finishes
- Upgrade Kits



CONTROL TECHNOLOGY



SPECIFICATIONS

CONSTRUCTION

- All housing components aluminum 360 alloy, sealed with continuous silicone rubber gaskets
- Standard configurations do not require a flat lens, optional lenses is tempered glass
- All internal and external hardware is stainless steel
- Finish: fade and abrasion resistant, electrostatically applied, thermally cured, triglycidal isocyanurate (TGIC) polyester powdercoat
- Optical bezel finish is match the luminaire housing

LED/OPTICS

- Optical cartridge system consisting of a die cast heat sink, LED engine, TIR optics, gasket and bezel plate.
- Cartridge is easily disassembled to replace components. Optics are held in place without the use of adhesives.
- Molded silicone gasket ensures a weather-proof seal around each individual LED.
- Features revolutionary individual LED optical control based on high performance TIR optical designs.
- House Side Shield is available on Standard and Clear Lens options except any Type 5 distribution. House Side Shield is not available for any distribution using a Diffused Lens.

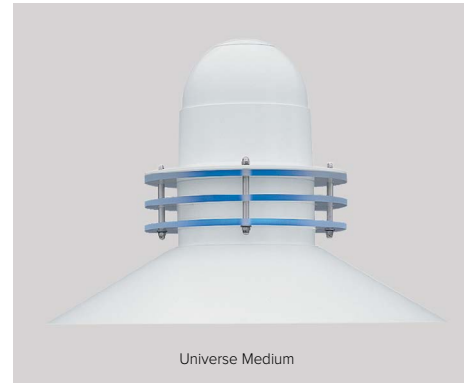
INSTALLATION

- Fixtures must be grounded in accordance with national, state and/or local electrical codes. Failure to do so may result in serious personal injury.

ELECTRICAL

- Luminaires have integral surge protection, UL recognized and have a surge current rating of 10,000 Amps using the industry standard 8/20uSec wave and surge rating of 372J
- Drivers are UL recognized with an inrush current maximum of <20.0 Amps maximum at 230VAC
- Drivers are not be compatible with current sourcing dimmers, consult factory for current list of known compatible dimming systems, approved dimmers include Lutron Diva AVTV, Lutron Nova NFTV and NTFTV
- Driver and surge suppressor are mounted to a prewired tray with quick disconnects that may be removed from the gear compartment

UNIVERSE®



RELATED PRODUCTS

[UCL2](#)

[UCL2-LK](#)

[UCS](#)

[UCB](#)

CONTROLS

- Egress adapter(s) shall slip over a 4"/100mm DIA. pole with the luminaire or arm slipping over the adapter to add a total of 4.5"/114mm to the overall height. Adapter(s) shall be prewired, independently rotatable 359°, and have a cast access cover with an integral lens and lanyard.
- Photocell adapter shall include an internal twist lock receptacle. Photocell by others.
- Egress adapter shall require an auxiliary 120 volt supply for operation of an integral MR16 lamp in the event of emergency. The lamp may be aimed and locked into position with an adjustment range of 15°-45°. Adapter shall have a socket that accepts miniature bi-pin MR16 lamps up to 50 watts, lamp by others

CERTIFICATIONS

- ETL listed under UL 1598 and CSA C22.2 No. 250.0-08 for wet locations

WARRANTY

- See [HLI Standard Warranty](#) for additional information

KEY DATA	
LUMEN RANGE	1,821–9,336
WATTAGE RANGE	31.52–71.6
EFFICACY RANGE (LPW)	54.5–138.5
INPUT CURRENT RANGE (mA)	260/420/615 mA
WEIGHT	18 lbs 4.1 kg to 27 lbs 12.25 kg
EPA	.53 to 1.05

ORDERING GUIDE

Example: UCM2-WND-BLU-FLR-36L-420-4K7-2-CL-BL-WIRSC-SLA2-D-UNV

CATALOG #

HOUSING

UCM2		LED Quantity		Lumen output		CCT/CRI		Distribution		Finish	
Housing		36L	36 LED	260	260mA, 4000 Lumens	5K7	5000K, 70 CRI	1	Type I	AGN	Antique Green
UCM2	Universe Medium 2.0			325	450mA Microcore Crossover	4K7	4000K, 70 CRI	2	Type II	BL	Black
Optional Element				420	420mA, 6000 Lumens	3K7	3000K, 70 CRI	3	Type III	BLT	Matte Black
WND	Universe Medium with Luminous Window			460	700mA Microcore Crossover	AMB	Amber-595nm Peak ¹	4W	Type IV Wide	CRT	Corton
SR	Universe Medium with Luminous Solid Rings			615	615mA, 9000 Lumens			5Q	Type V Square	DB	Dark Bronze
VSL	Universe Medium with Luminous Vertical Slots							5W	Type V Wide	DGN	Dark Green
LUM	Universe Medium with Luminous Rings									GT	Graphite
Optional Internal Lens										LG	Light Gray
BLU	Blue									MAL	Matte Aluminum
RD	Red									MDB	Metallic Bronze
GRN	Green									MG	Medium Gray
Hood Style										TT	Titanium
ANG	Angled Hood									VBU	Verde Blue
BEL	Bell Hood									WDB	Weathered Blue
FLR	Flared Hood									WH	White
SKB	Skirted Bell Hood									CC	Custom Color ⁴
STR	Straight Hood										
Hood Finish											
STS	Stainless Steel										
COP	Copper										

Mounting	Optional Lens	Options	Mounting Options	Voltage
Pole Mount	CL Clear Lens DL Diffused Lens ²	HS House Side Shield ³ SLC Solid Lens Cover SF Single Fuse (120, 277, 347) DF Double Fuse (208, 240, 480)	WIR wiSCAPE connectivity WIRSC wiSCAPE connectivity with Sensor SCP-8F Sensor Control to 8' Mounting Height SCP-20F Sensor Control to 9' to 20' Mounting Height PCA-C Photocontrol Adaptor Contemporary EPA-C Egress Adaptor Contemporary	UNV 120-277V 347 347V 480 480V
SLA2-D SLA18 SLA3 SLA20 SLA4 SLA20A SLA7 SLA22D SLA8D SLA24 SLA9 TRA7 SLA10 TRA8 SLA16 TRA9 SLA17				
Wall Mount				
WMA5 WMA17 WMA9D WMA20 WMA11 WMA24 WMA12 WMA39 WMA16				

DIMENSIONS

See page 6 for dimensions

Notes:

- 1 Wild life friendly
- 2 Diffused Lens is available only with T3 and T5W distribution
- 3 House side Shield is available only with T1, T2, T3 and T4W distributions
- 4 Consult factory

DATE: _____ LOCATION: _____
 TYPE: _____ PROJECT: _____
 CATALOG #: _____

CONTROLS

wiSCAPE™:

Supports remote management, monitoring and metering of outdoor wireless lighting applications such as smart campuses, smart cities, parking lots, parking lots and roadways.



wiSCAPE Reference									
wiSCAPE Option	Sensor	Networkable	Scheduling	Occupancy	Daylight Harvesting	0-10V Dimming	On/off Control	Bluetooth App Programming	Commissioning
Networked – Wireless									
WIR	WIR-RMI-IO	Yes	Yes	No	Yes	Yes	Yes	wiSCAPE Gateway	On-site
WIRSC	WIR-RMI-IO with Motion Sensor	Yes	Yes	Yes	Yes	Yes	Yes	wiSCAPE Gateway	On-site

DELIVERED LUMENS

The table below shows the delivered lumens for the various lumen outputs and beam distributions. Use this chart in connection with the lumen factor (LF) capability to deliver any output required.

LED #	Drive Current	Lumen Package	Lens	Distribution	3000K 70CRI				4000K 70CRI				5000K 70CRI						
					Lumen	Bug Rating			Efficacy (Lm/W)	Lumen	Bug Rating			Efficacy (Lm/W)	Lumen	Bug Rating			Efficacy (Lm/W)
36	260	4000	None	1	4100	1	0	1	130.1	4176	1	0	1	132.5	4354	1	0	1	138.5
				2	3788	1	0	1	120.2	3859	1	0	1	122.4	4023	1	0	1	127.9
				3	3708	1	0	1	114.6	3777	1	0	1	117.7	3938	1	0	1	125.4
				4W	3749	1	0	2	119.0	3819	1	0	2	121.2	3982	1	0	2	127.1
				1-HS	2316	0	0	0	73.5	2359	0	0	0	74.9	2460	0	0	0	78.4
				2-HS	2023	0	0	1	64.2	2061	0	0	1	65.4	2149	0	0	1	68.6
				3-HS	1981	0	0	1	62.9	2018	0	0	1	64.0	2104	0	0	1	67.0
				4W-HS	2044	0	0	1	64.9	2082	0	0	1	66.1	2171	0	0	1	69.2
				5Q	3936	2	0	1	124.9	4009	2	0	1	127.2	4180	2	0	1	133.4
				5W	3822	3	0	1	121.3	3893	3	0	1	123.5	4059	3	0	1	129.6
			Clear	1-CL	3769	0	0	1	119.6	3839	0	0	1	121.8	4002	1	0	1	127.0
				2-CL	3482	1	0	1	110.5	3547	1	0	1	112.5	3698	1	0	1	117.3
				3-CL	3409	1	0	1	108.1	3472	1	0	1	110.2	3620	1	0	1	115.5
				4W-CL	3447	1	0	2	109.3	3511	1	0	2	111.4	3660	1	0	2	116.1
				1-CL-HS	2129	0	0	0	67.6	2169	0	0	0	68.8	2261	0	0	0	71.7
				2-CL-HS	1860	0	0	1	59.0	1895	0	0	1	60.1	1975	0	0	1	62.7
				3-CL-HS	1821	0	0	1	57.8	1855	0	0	1	58.9	1934	0	0	1	61.4
				4W-CL-HS	1879	0	0	1	59.6	1914	0	0	0	60.7	1996	0	0	1	63.3
			Diffused	5Q-CL	3618	2	0	1	114.8	3685	2	0	1	116.9	3842	2	0	1	121.9
				5W-CL	3513	2	0	1	111.5	3579	2	0	1	113.5	3731	2	0	1	118.4
Diffused	3-DL	2943	1	0	1	93.4	2998	1	0	1	95.1	3126	1	0	1	99.3			
	5W-DL	3020	1	0	1	95.8	3076	1	0	1	97.6	3207	1	0	1	101.9			

DELIVERED LUMENS CONTINUED

The table below shows the delivered lumens for the various lumen outputs and beam distributions. Use this chart in connection with the lumen factor (LF) capability to deliver any output required.

LED #	Drive Current	Lumen Package	Lens	Distribution	3000K 70CRI				4000K 70CRI				5000K 70CRI							
					Lumen	Bug Rating			Efficacy (Lm/W)	Lumen	Bug Rating			Efficacy (Lm/W)	Lumen	Bug Rating			Efficacy (Lm/W)	
36	325	450mA Microcore Crossover	None	1	4999	1	0	1	125.0	5092	1	0	1	127.3	5309	1	0	1	132.7	
				2	4619	1	0	1	115.5	4705	1	0	1	117.6	4906	1	0	1	122.6	
				3	4522	1	0	2	113.0	4606	1	0	2	115.1	4802	1	0	2	120.1	
				4W	4572	1	0	2	114.3	4657	1	0	2	116.4	4856	1	0	2	121.4	
				1-HS	2825	0	0	0	70.6	2877	0	0	0	71.9	3000	0	0	0	75.0	
				2-HS	2467	0	0	1	61.7	2513	0	0	1	62.8	2620	0	0	1	65.5	
				3-HS	2416	0	0	1	60.4	2461	0	0	1	61.5	2566	0	0	1	64.1	
				4W-HS	2493	0	0	1	62.3	2539	0	0	1	63.5	2647	0	0	1	66.2	
				5Q	4799	2	0	1	120.0	4889	2	0	1	122.2	5097	2	0	1	127.4	
			5W	4660	3	0	1	116.5	4747	3	0	1	118.7	4950	3	0	1	123.7		
			Clear	1-CL	4595	1	0	1	114.9	4681	1	0	1	117.0	4881	1	0	1	122.0	
				2-CL	4246	1	0	1	106.2	4325	1	0	1	108.1	4510	1	0	1	112.7	
				3-CL	4156	1	0	1	103.9	4234	1	0	1	105.8	4414	1	0	1	110.4	
				4W-CL	4203	1	0	2	105.1	4281	1	0	2	107.0	4464	1	0	2	111.6	
				1-CL-HS	2596	0	0	0	64.9	2645	0	0	0	66.1	2757	0	0	0	68.9	
				2-CL-HS	2268	0	0	1	56.7	2310	0	0	1	57.8	2409	0	0	1	60.2	
				3-CL-HS	2221	0	0	1	55.5	2262	0	0	1	56.6	2358	0	0	1	59.0	
				4W-CL-HS	2291	0	0	1	57.3	2334	0	0	1	58.4	2434	0	0	1	60.8	
	5Q-CL	4412		2	0	1	110.3	4494	2	0	1	112.3	4685	2	0	1	117.1			
	5W-CL	4284	3	0	1	107.1	4364	3	0	1	109.1	4550	3	0	1	113.7				
	Diffused	3-DL	3581	1	0	1	89.5	3647	1	0	1	91.2	3803	1	0	1	95.1			
		5W-DL	3691	1	0	1	92.3	3760	1	0	1	94.0	3920	2	0	1	98.0			
	420	6000		None	1	6298	1	0	1	126.4	6416	1	0	1	128.8	6689	1	0	1	134.3
					2	5820	1	0	1	116.8	5928	1	0	1	119.0	6181	1	0	1	124.1
					3	5697	1	0	2	114.3	5803	1	0	2	116.5	6050	1	0	2	121.4
					4W	5760	1	0	3	115.6	5867	1	0	3	117.8	6118	1	0	3	122.8
					1-HS	3559	0	0	0	71.4	3625	0	0	0	72.8	3779	0	0	0	75.9
					2-HS	3109	0	0	1	62.4	3167	0	0	1	63.6	3302	0	0	1	66.3
					3-HS	3044	0	0	1	61.1	3100	0	0	1	62.2	3232	0	0	1	64.9
					4W-HS	3141	0	0	1	63.0	3199	0	0	1	64.2	3335	0	0	1	66.9
					5Q	6047	2	0	1	121.4	6159	2	0	1	123.6	6422	3	0	1	128.9
				5W	5872	3	0	1	117.9	5981	3	0	1	120.1	6236	3	0	1	125.2	
				Clear	1-CL	5790	1	0	1	116.2	5898	1	0	1	118.4	6149	1	0	1	123.4
					2-CL	5350	1	0	1	107.4	5449	1	0	1	109.4	5681	1	0	1	114.0
					3-CL	5237	1	0	2	105.1	5334	1	0	2	107.1	5561	1	0	2	111.6
4W-CL					5295	1	0	3	106.3	5394	1	0	3	108.3	5624	1	0	3	112.9	
1-CL-HS					3271	0	0	0	65.7	3332	0	0	0	66.9	3474	0	0	0	69.7	
2-CL-HS					2858	0	0	1	57.4	2911	0	0	1	58.4	3035	0	0	1	60.9	
3-CL-HS					2798	0	0	1	56.2	2850	0	0	1	57.2	2971	0	0	1	59.6	
4W-CL-HS					2887	0	0	1	57.9	2941	0	0	1	59.0	3066	0	0	1	61.5	
5Q-CL		5558	2		0	1	111.6	5662	2	0	1	113.6	5903	2	0	1	118.5			
5W-CL		5398	3	0	1	108.3	5498	3	0	1	110.4	5732	3	0	1	115.1				
Diffused		3-DL	4511	1	0	1	90.6	4595	1	0	1	92.3	4791	1	0	1	96.2			
		5W-DL	4562	2	0	1	91.6	4647	2	0	1	93.3	4845	2	0	1	97.3			

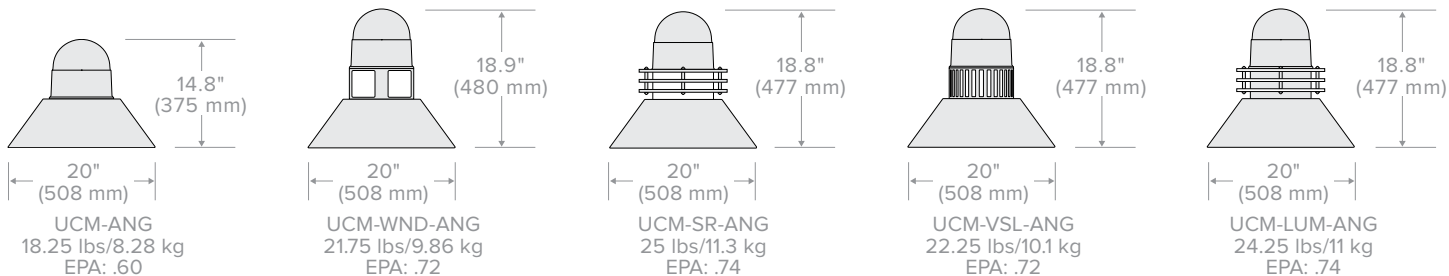
DELIVERED LUMENS CONTINUED

The table below shows the delivered lumens for the various lumen outputs and beam distributions. Use this chart in connection with the lumen factor (LF) capability to deliver any output required.

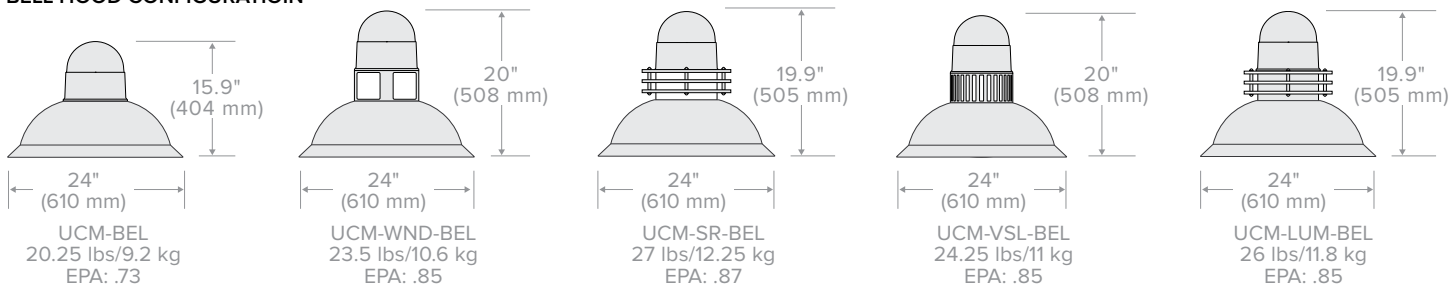
LED #	Drive Current	Lumen Package	Lens	Distribution	3000K 70CRI				4000K 70CRI				5000K 70CRI							
					Lumen	Bug Rating			Efficacy (Lm/W)	Lumen	Bug Rating			Efficacy (Lm/W)	Lumen	Bug Rating			Efficacy (Lm/W)	
36	460	700mA Microcore Crossover	None	1	6811	1	0	1	124.1	6937	1	0	1	126.4	7233	1	0	1	131.8	
				2	6293	1	0	2	114.6	6410	1	0	2	116.8	6683	1	0	2	121.7	
				3	6160	1	0	2	112.2	6275	1	0	2	114.3	6542	1	0	2	119.2	
				4W	6229	1	0	3	113.5	6345	1	0	3	115.6	6615	1	0	3	120.5	
				1-HS	3848	0	0	0	70.1	3920	0	0	0	71.4	4087	0	0	0	74.4	
				2-HS	3362	0	0	1	61.2	3424	0	0	1	62.4	3570	0	0	1	65.0	
				3-HS	3291	0	0	1	59.9	3352	0	0	1	61.1	3495	0	0	1	63.7	
				4W-HS	3396	0	0	1	61.9	3459	0	0	1	63.0	3607	0	0	1	65.7	
				5Q	6538	3	0	1	119.1	6660	3	0	1	121.3	6944	3	0	1	126.5	
			5W	6349	3	0	1	115.6	6467	3	0	1	117.8	6743	3	0	1	122.8		
			Clear	1-CL	6261	1	0	1	114.0	6377	1	0	1	116.2	6649	1	0	1	121.1	
				2-CL	5785	1	0	1	105.4	5892	1	0	1	107.3	6144	1	0	1	111.9	
				3-CL	5662	1	0	2	103.1	5768	1	0	2	105.1	6014	1	0	2	109.5	
				4W-CL	5726	1	0	3	104.3	5832	1	0	3	106.2	6081	1	0	3	110.8	
				1-CL-HS	3537	0	0	0	64.4	3603	0	0	0	65.6	3757	0	0	0	68.4	
				2-CL-HS	3090	0	0	1	56.3	3148	0	0	1	57.3	3282	0	0	1	59.8	
				3-CL-HS	3025	0	0	1	55.1	3082	0	0	1	56.1	3213	0	0	1	58.5	
				4W-CL-HS	3122	0	0	1	56.9	3180	0	0	1	57.9	3315	0	0	1	60.4	
	5Q-CL	6010		2	0	1	109.5	6122	2	0	1	111.5	6383	3	0	1	116.3			
	Diffused	5W-CL	5836	3	0	1	106.3	5945	3	0	1	108.3	6199	3	0	1	112.9			
		3-DL	4878	1	0	1	88.9	4969	1	0	1	90.5	5181	1	0	1	94.4			
		5W-DL	5028	2	0	1	91.6	5122	2	0	1	93.3	5340	2	0	1	97.3			
	615	9000		None	1	8791	1	0	1	122.8	8954	1	0	1	125.1	9336	1	0	1	130.4
					2	8122	1	0	2	113.5	8274	1	0	2	115.6	8626	1	0	2	120.5
					3	7951	1	0	2	111.1	8099	1	0	2	113.1	8444	1	0	2	117.9
					4W	8040	1	0	3	112.3	8189	1	0	3	114.4	8538	1	0	3	119.3
					1-HS	4967	0	0	0	69.4	5059	0	0	0	70.7	5275	0	0	0	73.7
					2-HS	4339	0	0	1	60.6	4420	0	0	1	61.7	4608	0	0	1	64.4
					3-HS	4248	0	0	1	59.3	4327	0	0	1	60.4	4511	0	0	1	63.0
					4W-HS	4383	0	0	2	61.2	4465	0	0	2	62.4	4655	0	0	2	65.0
					5Q	8439	3	0	1	117.9	8596	3	0	1	120.1	8963	3	0	1	125.2
				5W	8195	3	0	2	114.5	8348	3	0	2	116.6	8703	3	0	2	121.6	
				Clear	1-CL	8081	1	0	1	112.9	8231	1	0	1	115.0	8582	1	0	1	119.9
					2-CL	7467	1	0	2	104.3	7605	1	0	2	106.2	7930	1	0	2	110.8
					3-CL	7309	1	0	2	102.1	7445	1	0	2	104.0	7762	1	0	2	108.4
					4W-CL	7390	1	0	3	103.2	7528	1	0	3	105.2	7849	1	0	3	109.6
1-CL-HS					4566	0	0	0	63.8	4651	0	0	0	65.0	4849	0	0	0	67.7	
2-CL-HS					3988	0	0	1	55.7	4063	0	0	1	56.7	4236	0	0	1	59.2	
3-CL-HS					3905	0	0	1	54.5	3978	0	0	1	55.6	4147	0	0	1	57.9	
4W-CL-HS					4029	0	0	2	56.3	4104	0	0	2	57.3	4279	0	0	2	59.8	
5Q-CL	7758	3	0		1	108.4	7902	3	0	1	110.4	8239	3	0	1	115.1				
5W-CL	7533	3	0	2	105.2	7674	3	0	2	107.2	8001	3	0	2	111.8					
Diffused	3-DL	6297	2	0	1	87.9	6414	2	0	2	89.6	6687	2	0	2	93.4				
	5W-DL	6490	2	0	1	90.6	6611	2	0	1	92.3	6893	2	0	1	96.3				

DIMENSIONS

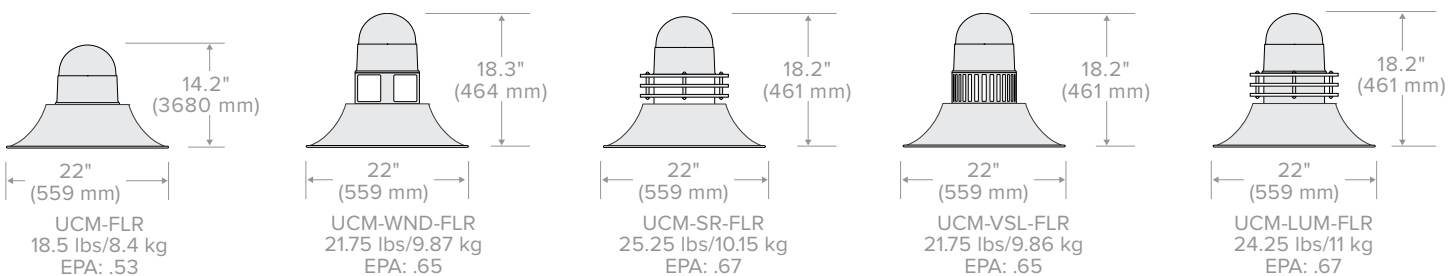
ANGLED HOOD CONFIGURATION



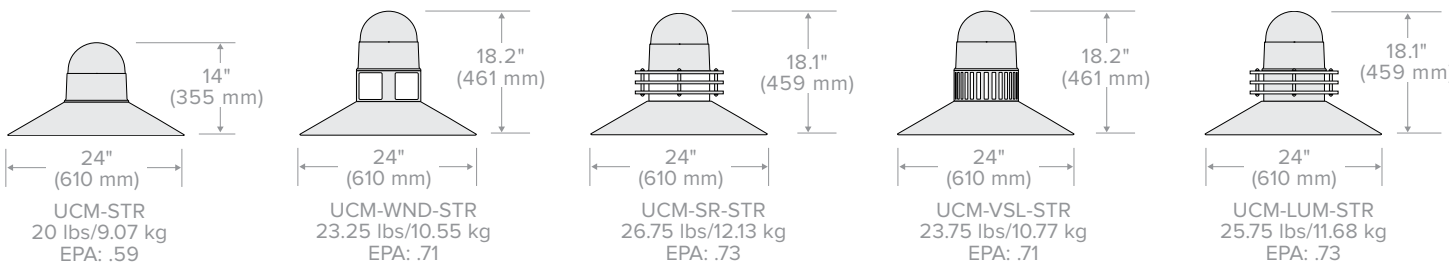
BELL HOOD CONFIGURATION



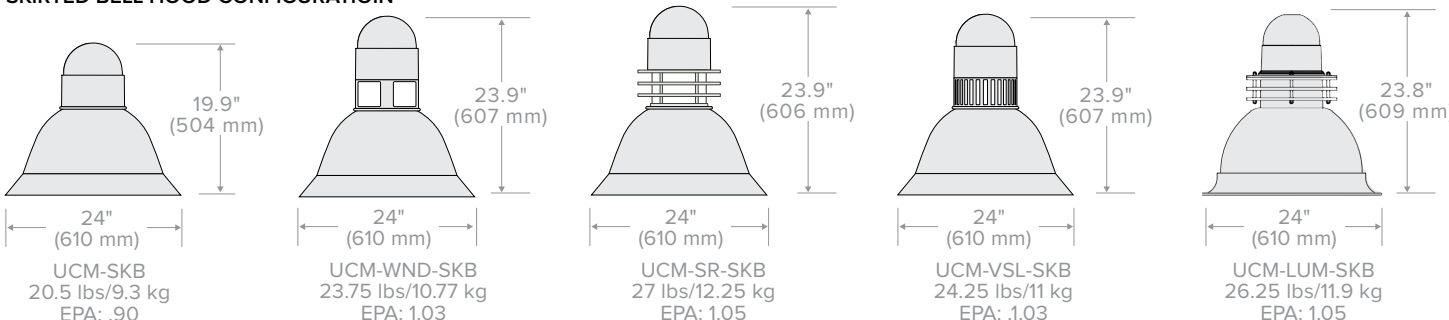
FLARE HOOD CONFIGURATION



STRAIGHT HOOD CONFIGURATION



SKIRTED BELL HOOD CONFIGURATION



PHOTOMETRY

UCM2-ANG-36L-615-4K7-1

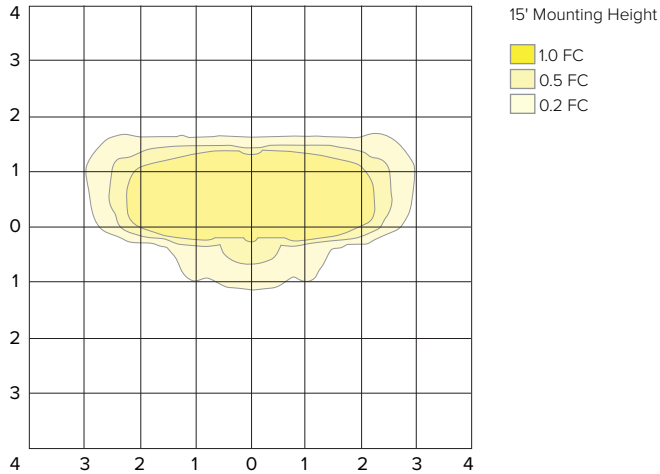
LUMINAIRE DATA

Description	4000 Kelvin, 70CRI
Delivered Lumens	8954
Watts	71.59
Efficacy	125.1
IES Type	I
BUG Rating	B1-U0-G1
Mounting Height	15 ft
Grid Scale	15 ft

ZONAL LUMEN SUMMARY

Zone	Lumens	% Luminaire
Downward Street Side	8046	90%
Downward House Side	908	10%
Downward Total	8954	100%
Upward Street Side	0	0%
Upward House Side	0	0%
Upward Total	0	0%
Total Flux	8954	100%

ISOFOOT CANDLE PLOT



UCM2-ANG-36L-615-4K7-2

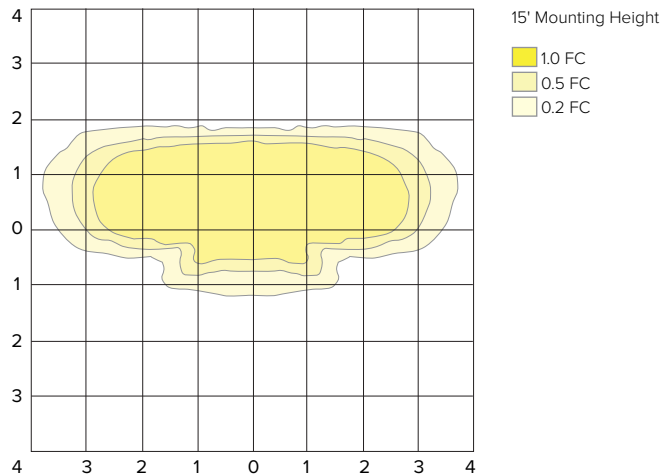
LUMINAIRE DATA

Description	4000 Kelvin, 70CRI
Delivered Lumens	8274
Watts	71.59
Efficacy	115.6
IES Type	II
BUG Rating	B1-U0-G2
Mounting Height	15 ft
Grid Scale	15 ft

ZONAL LUMEN SUMMARY

Zone	Lumens	% Luminaire
Downward Street Side	6942	84%
Downward House Side	1332	16%
Downward Total	8274	100%
Upward Street Side	0	0%
Upward House Side	0	0%
Upward Total	0	0%
Total Flux	8274	100%

ISOFOOT CANDLE PLOT



UCM2-ANG-36L-615-4K7-3

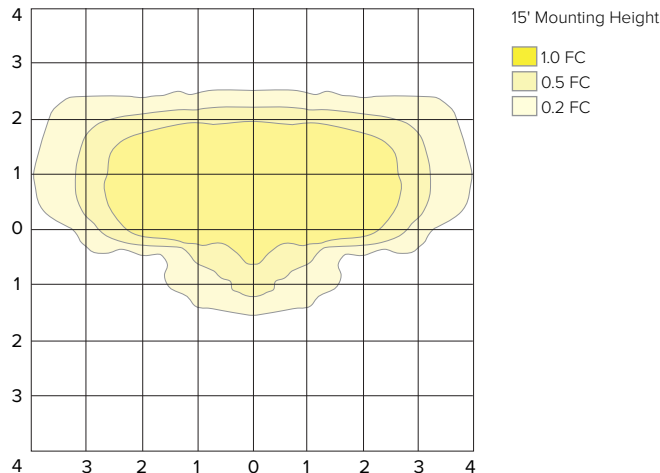
LUMINAIRE DATA

Description	4000 Kelvin, 70CRI
Delivered Lumens	8099
Watts	71.59
Efficacy	113.1
IES Type	III
BUG Rating	B1-U0-G2
Mounting Height	15 ft
Grid Scale	15 ft

ZONAL LUMEN SUMMARY

Zone	Lumens	% Luminaire
Downward Street Side	6800	84%
Downward House Side	1299	16%
Downward Total	8099	100%
Upward Street Side	0	0%
Upward House Side	0	0%
Upward Total	0	0%
Total Flux	8099	100%

ISOFOOT CANDLE PLOT



PHOTOMETRY

UCM2-ANG-36L-615-4K7-4W

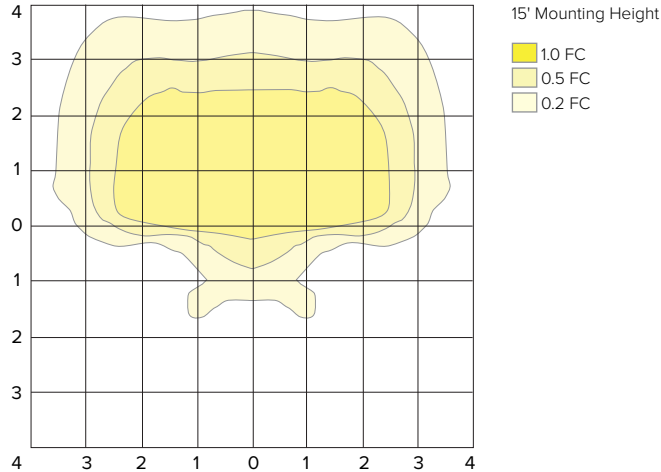
LUMINAIRE DATA

Description	4000 Kelvin, 70CRI
Delivered Lumens	8189
Watts	71.6
Efficacy	114.4
IES Type	IV Wide
BUG Rating	B1-U0-G3
Mounting Height	15 ft
Grid Scale	15 ft

ZONAL LUMEN SUMMARY

Zone	Lumens	% Luminaire
Downward Street Side	7339	90%
Downward House Side	850	10%
Downward Total	8189	100%
Upward Street Side	0	0%
Upward House Side	0	0%
Upward Total	0	0%
Total Flux	8189	100%

ISOFOOT CANDLE PLOT



UCM2-ANG-36L-615-4K7-5Q

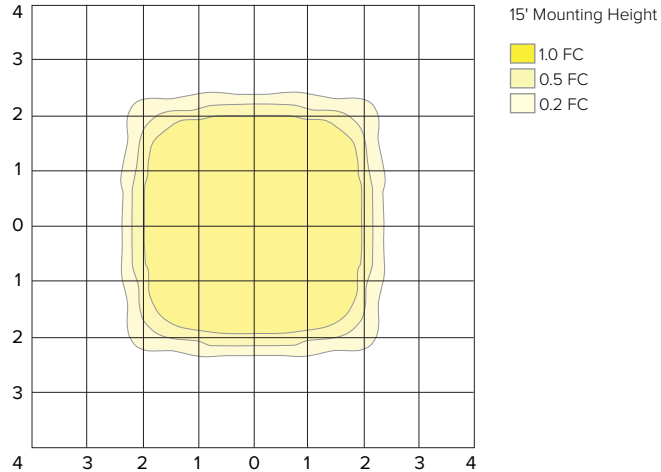
LUMINAIRE DATA

Description	4000 Kelvin, 70CRI
Delivered Lumens	8596
Watts	71.6
Efficacy	120.1
IES Type	VS
BUG Rating	B3-U0-G1
Mounting Height	15 ft
Grid Scale	15 ft

ZONAL LUMEN SUMMARY

Zone	Lumens	% Luminaire
Downward Street Side	4298	50%
Downward House Side	4298	50%
Downward Total	8596	100%
Upward Street Side	0	0%
Upward House Side	0	0%
Upward Total	0	0%
Total Flux	8596	100%

ISOFOOT CANDLE PLOT



UCM2-ANG-36L-615-4K7-5W

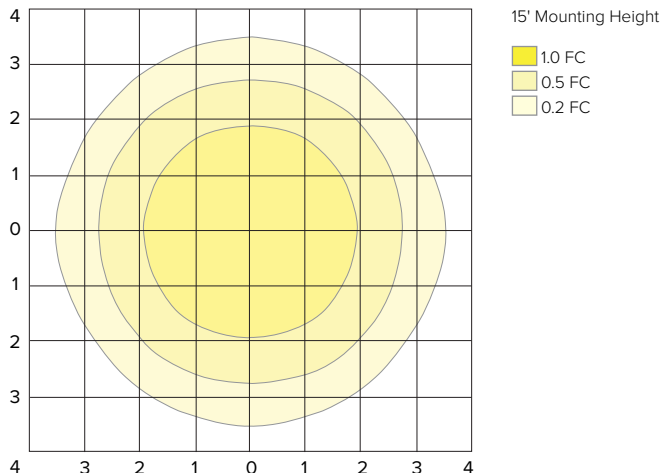
LUMINAIRE DATA

Description	4000 Kelvin, 70CRI
Delivered Lumens	8348
Watts	71.6
Efficacy	116.6
IES Type	VS
BUG Rating	B3-U0-G2
Mounting Height	15 ft
Grid Scale	15 ft

ZONAL LUMEN SUMMARY

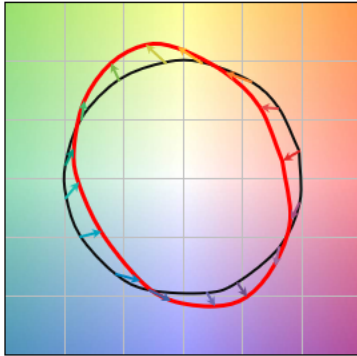
Zone	Lumens	% Luminaire
Downward Street Side	4174	50%
Downward House Side	4174	50%
Downward Total	8348	100%
Upward Street Side	0	0%
Upward House Side	0	0%
Upward Total	0	0%
Total Flux	8348	100%

ISOFOOT CANDLE PLOT



TM-30 DATA

COLOR VECTOR GRAPHIC

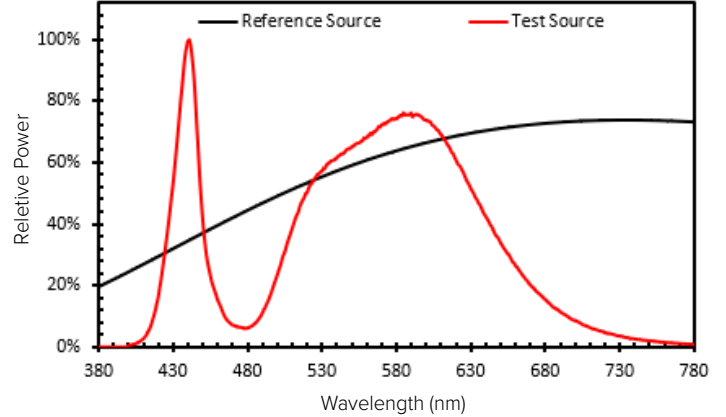


— Reference Illuminant — Test Source

TEST SOURCE

MBM TEST RESULTS	
CCT (K)	3947
CIE Ra	72
Duv	0.0004
x	0.3831
y	0.3793
Rf	68
Rg	99

SPECTRAL POWER DISTRIBUTION COMPARISON



ELECTRICAL DATA

Light Engine	Electrical										Dimming						
	System Current	System Watts	Line Voltage		Amps AC						Min. Power Factor	Max THD (%)	Dimming Range	Source current out of 0-10V		Absolute voltage range on 0-10V (+)	
			VAC	HZ	120	208	240	277	347	480				Min	Max	Min	Max
36L	260 mA	31.52	120-480	50/60	0.26	0.15	0.13	0.11	0.09	0.07	>0.9	20	10% to 100%	0mA	1mA	0V	10V
	325 mA	40			0.33	0.19	0.17	0.14	0.12	0.08							
	420 mA	49.82			0.42	0.24	0.21	0.18	0.14	0.10							
	460 mA	54.9			0.46	0.26	0.23	0.20	0.16	0.11							
	615 mA	71.6			0.60	0.34	0.30	0.26	0.21	0.15							

TM-21 LIFETIME CALCULATION - PROJECTED LUMEN MAINTENANCE (25°C / 77°F)						
HOURS	0	25,000	36,000	50,000	100,000	REPORTED L70
Projected Lumen Maintenance	100%	98.0%	96.9%	95.4%	90.5%	> 60,000

AMBER MULTIPLIER	
CCT	MULTIPLIER
5000K	1
AM	0.1727

2700K MULTIPLIER	
CCT	MULTIPLIER
5000K	1
2700K	0.897

LENS OPTION MULTIPLIER	
CLEAR LENS	DIFFUSED LENS
0.9192	0.7919

ADDITIONAL INFORMATION

PHOTOCELL / EGRESS ADAPTERS

- Adapter(s) shall slip over a 4"/100mm DIA. pole with the luminaire or arm slipping over the adapter to add a total of 4.5"/114mm to the overall height. Adapter(s) shall be prewired, independently rotatable 359°, and have a cast access cover with an integral lens and lanyard.
- Photocell adapter shall include an internal twist lock receptacle. Photocell by others.
- Egress adapter shall require an auxiliary 120 volt supply for operation of an integral MR16 lamp in the event of emergency. The lamp may be aimed and locked into position with an adjustment range of 15°-45°. Adapter shall have a socket that accepts miniature bi-pin MR16 lamps up to 50 watts, lamp by others.

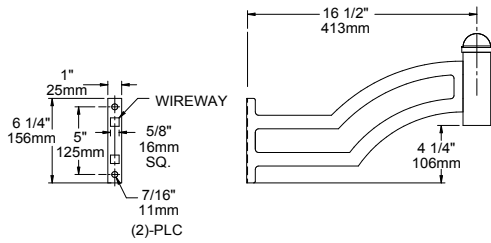
ADDITIONAL INFORMATION CONTINUED

MOUNTING POLE OPTIONS

SLA2-D

Wt: 6 lbs

EPA: .30

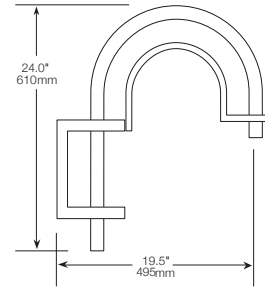


4" POLE

SLA3

WT: 8 LBS

EPA: .77

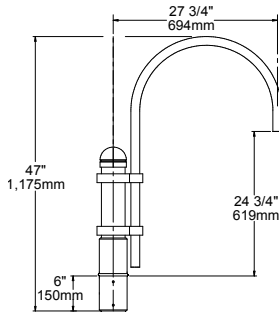


4" POLE

SLA4

WT: 14 LBS

EPA: 1.39

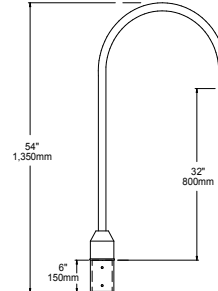


4" POLE

SLA7

WT: 9 LBS

EPA: 1.34

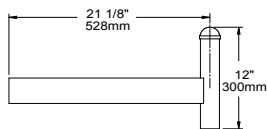


4" POLE

SLA8D

WT: 5 LBS

EPA: .40

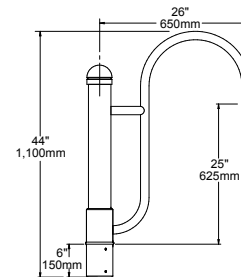


4" OR 5" POLE

SLA9

WT: 18 LBS

EPA: 1.90

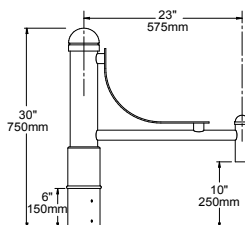


4" POLE

SLA10

WT: 9 LBS

EPA: 1.09

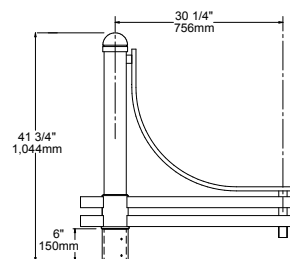


4" POLE

SLA16

WT: 18 LBS

EPA: 2.88

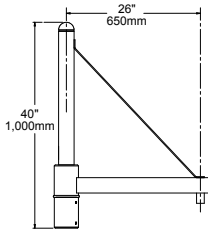


4" POLE

ADDITIONAL INFORMATION CONTINUED

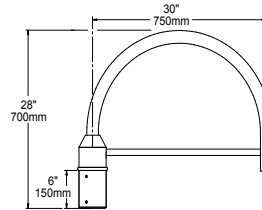
MOUNTING POLE OPTIONS

SLA17 WT: 18 LBS EPA: 1.50



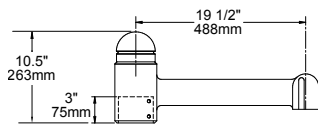
4" POLE

SLA18 WT: 12 LBS EPA: .85



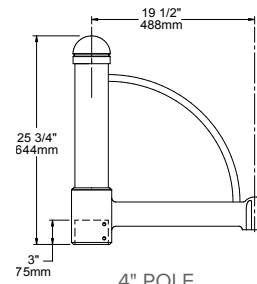
4" POLE

SLA20 WT: 10 LBS EPA: .70



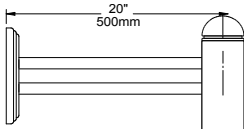
4" POLE

SLA20A WT: 15 LBS EPA: 1.30



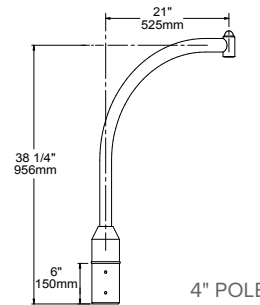
4" POLE

SLA22D WT: 4 LBS EPA: .44



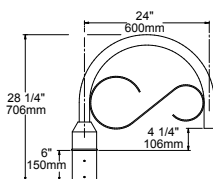
4" POLE

SLA24 WT: 9 LBS EPA: .85



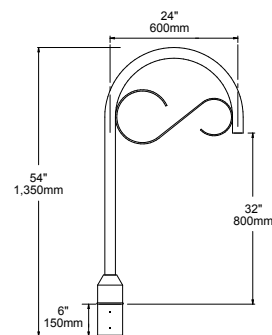
4" POLE

TRA7 WT: 12 LBS EPA: .90



4" POLE

TRA8 WT: 13 LBS EPA: 1.34



4" POLE

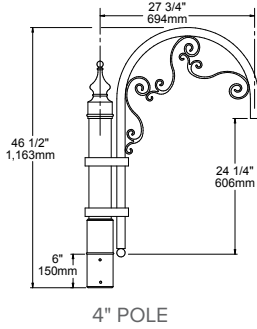
ADDITIONAL INFORMATION CONTINUED

MOUNTING POLE OPTIONS

TRA9

WT: 17 LBS

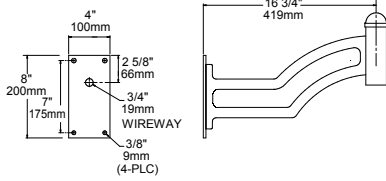
EPA: 1.90



MOUNTING WALL OPTIONS

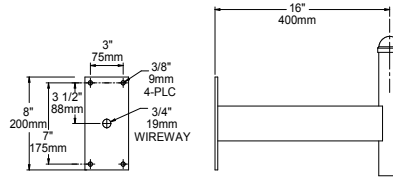
WMA5

WT: 6 LBS



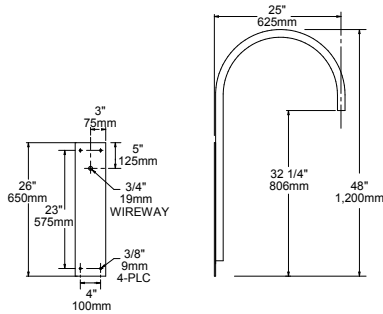
WMA9D

WT: 6 LBS



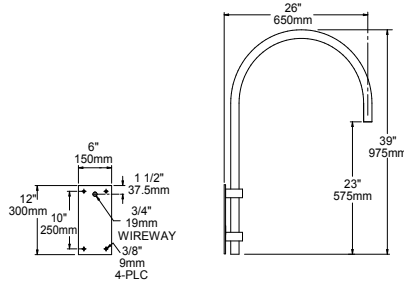
WMA11

WT: 10 LBS



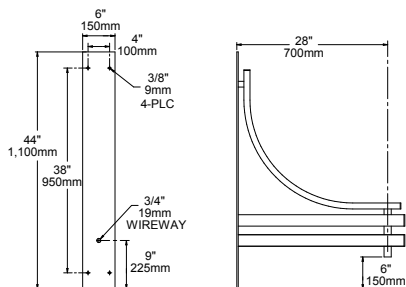
WMA12

WT: 12 LBS



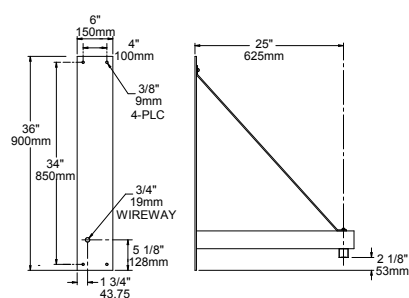
WMA16

WT: 22 LBS



WMA17

WT: 15 LBS

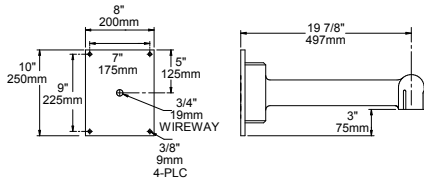


ADDITIONAL INFORMATION CONTINUED

MOUNTING WALL OPTIONS

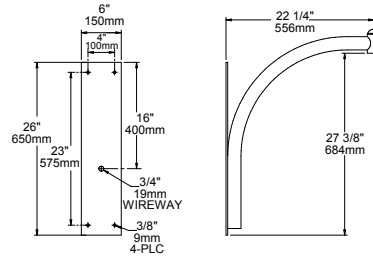
WMA20

WT: 12 LBS



WMA24

WT: 12 LBS



WMA39

WT: 14 LBS

