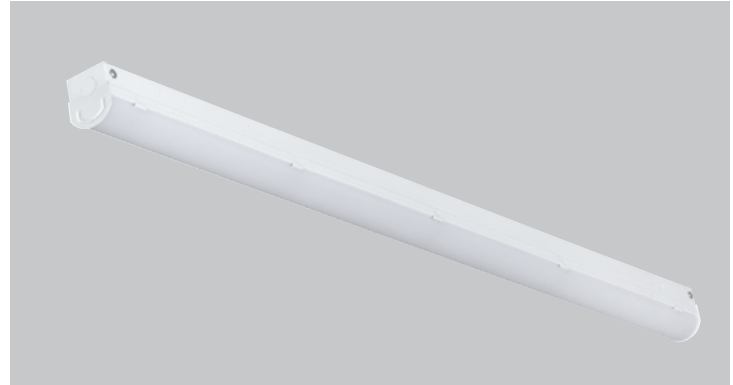


DATE: \_\_\_\_\_ LOCATION: \_\_\_\_\_  
 TYPE: \_\_\_\_\_ PROJECT: \_\_\_\_\_  
 CATALOG #: \_\_\_\_\_

tradeSELECT®

**FEATURES**

- 4ft and 8ft lengths
- Choice of two color temperatures
- Wide range of applications
- 80+ CRI
- 0–10V dimming
- Surface mount on wall or ceiling
- Universal voltage (120–277V)
- 4,000 and 8,000 nominal lumens



**SPECIFICATIONS**

**OPTICS**

- Frosted acrylic lens

**INSTALLATION**

- Fully assembled for quick installation

**ELECTRICAL**

- 54,000 hour LEDs at L70 for reduced maintenance

**CERTIFICATIONS**

- All luminaires are built to UL1598 standards and bear appropriate ETL labels
- Damp location label standard
- DLC® (DesignLights Consortium) Qualified. Please refer to the DLC website for specific product qualifications at [www.designlights.org](http://www.designlights.org)

**WARRANTY**

- 5 year warranty
- See [HLI Standard Warranty](#) for additional information

**ORDERING GUIDE**

Catalog Number	Description	Delivered Lumens	Watts	LPW	Qty on Pallet
CSL4-4035	4ft LED Striplight, 4,000 Lumens, 3500K, 0-10V dimming	4231	40.2	105	120
CSL4-4040	4ft LED Striplight, 4,000 Lumens, 4000K, 0-10V dimming	4517	40.2	112	120
CSL8-8035	8ft LED Striplight, 8,000 Lumens, 3500K, 0-10V dimming	8460	80.5	105	120
CSL8-8040	8ft LED Striplight, 8,000 Lumens, 4000K, 0-10V dimming	9036	80.5	112	120

Accessories (Order Separately)	
GLH5	5' adjustable cable for suspension mount

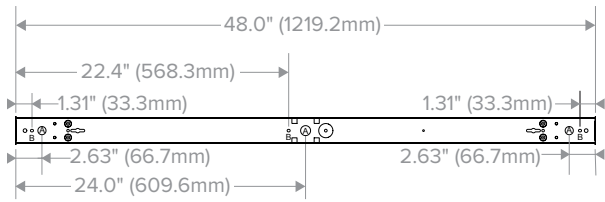
KEY DATA	
Lumen Range	4231–9036
Wattage Range	40.2–80.5
Efficacy Range (LPW)	105–112
Reported Life (Hours)	L70/54,000
Input Current (Amps)	0.34–0.63

DATE: \_\_\_\_\_ LOCATION: \_\_\_\_\_

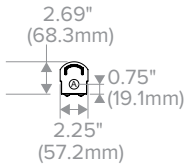
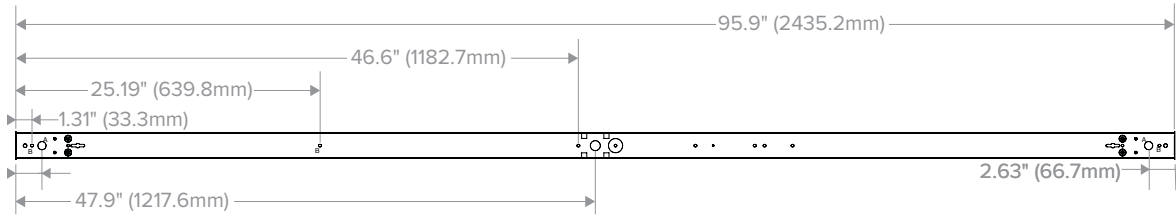
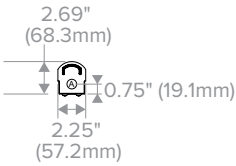
TYPE: \_\_\_\_\_ PROJECT: \_\_\_\_\_

CATALOG #: \_\_\_\_\_

**DIMENSIONS**



A - 7/8" diameter knockout  
B - 5/32" x 1/4" hole



**PHOTOMETRY**

**CSL4-4035**

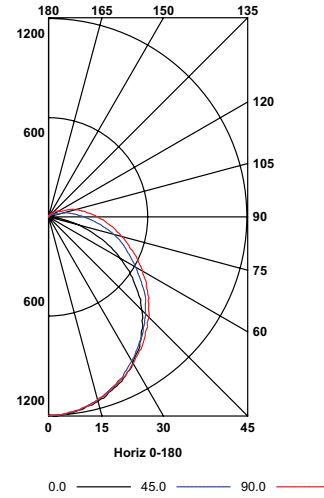
**LUMINAIRE DATA**

Test No.	17614
Description	tradeSELECT® CSL, Striplight 48" x 2.25" LED striplight with opal lens
Delivered Lumens	4231
Watts	40.24
Efficacy	105
Mounting	Recessed
Spacing Criterion	0° = 1.25 90° = 1.26

**ZONAL LUMEN SUMMARY**

Zone	Lumens	% Luminaire
0-30	935	22.1
0-40	1536	36.3
0-60	2768	65.4
0-90	3902	92.2
0-180	4231	100

**POLAR GRAPH**



**CSL4-4040**

**LUMINAIRE DATA**

Test No.	17615
Description	tradeSELECT® CSL, Striplight 48" x 2.25" LED striplight with opal lens
Delivered Lumens	4517
Watts	40.24
Efficacy	112
Mounting	Recessed
Spacing Criterion	0° = 1.25 90° = 1.26

**ZONAL LUMEN SUMMARY**

Zone	Lumens	% Luminaire
0-30	998	22.1
0-40	1641	36.3
0-60	2957	65.5
0-90	4167	92.2
0-180	4517	100

**POLAR GRAPH**

