

LED



createchange



## FEATURES

- Matches LWC in appearance
- Long life 50,000 hour LEDs at L80 for reduced maintenance
- Four LED color choices and 80 CRI
- Available in 4' and 8' lengths
- Heavy gauge steel housing, die embossed for maximum rigidity
- Diffuser features flat bottom and vertical sides
- Injection molded ends sonically welded to prismatic lens extrusion
- LED light engine accessible for future maintenance or upgrades; modular replaceability
- Surface mount or stem mount
- QR code traceability
- DLC® (DesignLights Consortium) Qualified - see [www.designlights.org](http://www.designlights.org)
- 5 year warranty

## PROJECT INFORMATION

Project Name \_\_\_\_\_

Type \_\_\_\_\_

Catalog No. \_\_\_\_\_

Date \_\_\_\_\_

## CONSTRUCTION

Housing and wireway are formed from code-gauge steel. Housing components act as heat sink for LED heat dissipation. Ends are injection molded, sonically welded to shielding. Knockouts are provided for electrical access and mounting.

## SHIELDING

100% acrylic prismatic.

## FINISH

White painted parts are treated with a five-stage phosphate bonding process and finished with high reflectance baked enamel. For a post-painted housing finish select PAF option.

## ELECTRICAL

Long-life LEDs are rated for 50,000 hours at L80 lumen maintenance. Driver options include fixed output for on/off function, step dimming (high/low/off) or continuous 0-10V dimming.

## CERTIFICATION

All luminaires are built to UL 1598 and 2108 standards, and bear appropriate CSA labels. Damp location labeling is standard. Emergency equipped fixtures built to UL924. Adheres to LM79, LM80 and TM21 industry standards. DLC® (DesignLights Consortium) Qualified. Please refer to the DLC website for specific product qualifications at [www.designlights.org](http://www.designlights.org).

## WARRANTY

Five year warranty (Terms and Conditions Apply).

## ORDERING INFORMATION

## EXAMPLE LPT4-35HL-EU

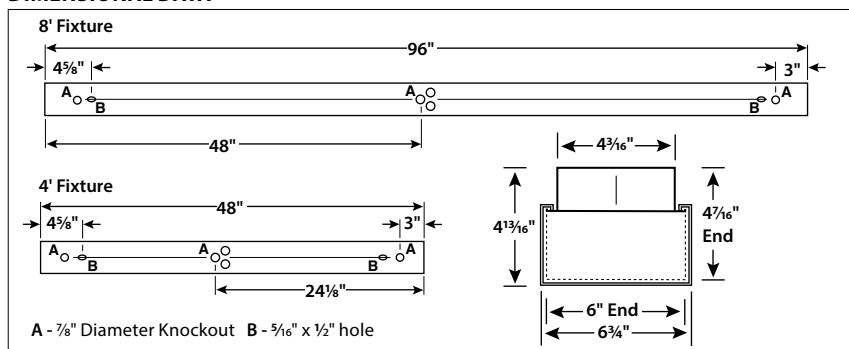
LPT		4	-	-	-	-	-
MODEL	SIZE	COLOR TEMP	LUMEN OUTPUT	DRIVER	VOLTAGE	OPTIONS	
LPT Premium LED Corridor Wraparound	4 4' 8 8'	35 3500K 40 4000K	LW Low Watt ML Medium Lumen HL High Lumen VL Very High Lumen	E Fixed Output ESD Step Dimming ED 0-10V Dimming ED1 0-10V Dimming LUTH Hi-lume 1% EcoSystem LED driver with Soft-on, Fade-to-Black dimming technology <sup>3</sup> LUTS 5-Series EcoSystem LED driver <sup>3</sup>	U 120V-277V 347 347 (E,ED,ED1 only)	ELL14 Emergency Battery Pack, 1400 Lumens <sup>1,2</sup> GLR Fast Blow Fuse PAF Paint After Fabrication	
<b>ACCESSORIES (ORDER SEPARATELY)</b> ITB4 T-Bar Hanger S18 18" Stem, Canopy SS18 18" Swivel Stem - 45° Swivel							

<sup>1</sup> For compatibility with Dual-Lite LiteGear® inverters in lieu of installed battery pack, contact Hubbell Lighting representative.

<sup>2</sup> ELL14 not available with VL lumen packages.

<sup>3</sup> Not available in VL packages

## DIMENSIONAL DATA



## PRODUCT AVAILABILITY

SIZE	LUMEN PACKAGE	NOMINAL LUMENS (35K)	NOMINAL WATTS
4'	LW	2,700	25
	ML	5,000	53
	HL	6,400	63
	VL	9,600	105
8'	LW	5,400	50
	ML	10,000	106
	HL	12,800	126
	VL	19,200	210

Actual lumens will vary according to color temperature and other factors. For exact lumens and watts see specific photometric test(s).

**NOTE:** All dimensions are in inches; dimensions and specifications are subject to change without notice. Please consult factory or check sample for verification.

Test #8343 Test Date 12/20/2013

**PHOTOMETRIC DATA**

**LUMINAIRE DATA**

Luminaire	LPT4-35HL-EDU LPT LED Premium Corridor, Wraps 7" x 48" LED LUMINAIRE WITH WRAPAROUND ACRYLIC PRISMED LENS
Ballast	(2) D185CQ30UNVA-A
Ballast Factor	1.00
Lamp	LED
Fixture Lumens	6383
Watts	62.80
Mounting	Surface
Shielding Angle	0° = 90 90° = 90
Spacing Criterion	0° = 1.26 90° = 1.21
Luminous Opening in feet	Length: 4.00 Width: 0.50 Height: 0.25

**ZONAL LUMEN SUMMARY**

Zone	Lumens	%Lamp	%Fixt.
0-30	1863	29.2	29.2
0-40	2967	46.5	46.5
0-60	4554	71.3	71.3
0-90	5685	89.1	89.1
0-180	6383	100.0	100.0

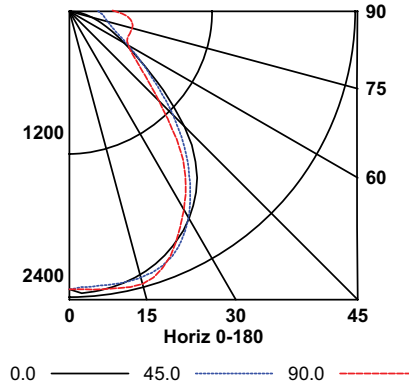
**ENERGY DATA**

Total Luminaire Efficiency	100.0%
Total Lumens per Watt	102
ANSI/IESNA RP-1-2004 Compliance	Noncompliant
Comparative Yearly Lighting Energy Cost per 1000 Lumens	\$2.38 based on 3000 hrs. and \$0.08 per KWH

**COEFFICIENTS OF UTILIZATION (%)**

RCR	RC	80				70				50				0
		RW	70	50	30	10	70	50	30	10	50	30	10	0
1	106	101	96	92	102	98	94	90	91	88	85	73		
2	97	89	82	76	93	86	80	75	81	76	71	62		
3	89	79	71	65	85	76	69	63	72	66	61	54		
4	82	70	62	56	79	68	61	55	65	58	53	47		
5	76	63	55	49	73	62	54	48	58	52	46	41		
6	70	58	49	43	68	56	48	42	53	46	41	37		
7	65	52	44	38	63	51	43	38	49	42	37	33		
8	61	48	40	34	59	47	39	34	45	38	33	30		
9	57	44	36	31	55	43	36	31	41	35	30	27		
10	54	41	33	28	52	40	33	28	38	32	27	25		

**INDOOR CANDELA PLOT**



**AVG. LUMINANCE (Candela/Sq. M.)**

Average Luminance Angle	0.0	22.5	45.0	67.5	90.0
0	12545	12545	12545	12545	12545
30	12038	10991	10098	9420	9274
40	10995	9263	7938	7217	6924
45	9757	7897	6692	5737	5399
50	8018	6430	5425	4518	4307
55	6288	5135	4368	3783	3618
60	5206	4068	3633	3320	3282
65	4436	3246	3106	3137	3300
70	3801	2747	2842	3228	3586
75	3288	2511	2787	3467	3954
80	2769	2377	2865	3846	4323
85	2125	2119	3073	4137	4488

RCR = Room Cavity Ratio

RC = Effective Ceiling Cavity Reflectance RW = Wall Reflectance

Test #8313 Test Date 12/18/2013

**LUMINAIRE DATA**

Luminaire	LPT4-35LW-EDU LPT LED Premium Corridor, Wraps 7" x 48" LED LUMINAIRE WITH WRAPAROUND ACRYLIC PRISMED LENS
Ballast	D150CQ25UNVA-A
Ballast Factor	1.00
Lamp	LED
Fixture Lumens	2687
Watts	25.30
Mounting	Surface
Shielding Angle	0° = 90 90° = 90
Spacing Criterion	0° = 1.26 90° = 1.21
Luminous Opening in feet	Length: 4.00 Width: 0.50 Height: 0.25

**ZONAL LUMEN SUMMARY**

Zone	Lumens	%Lamp	%Fixt.
0-30	788	29.3	29.3
0-40	1253	46.6	46.6
0-60	1916	71.3	71.3
0-90	2392	89.0	89.0
0-180	2687	100.0	100.0

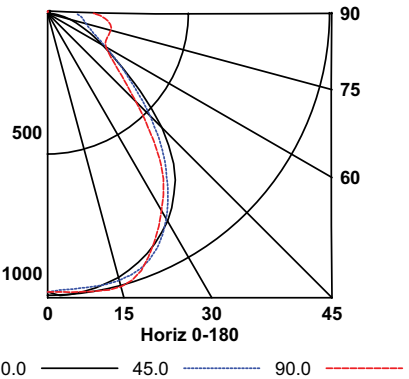
**ENERGY DATA**

Total Luminaire Efficiency	100.0%
Total Lumens per Watt	106
ANSI/IESNA RP-1-2004 Compliance	Noncompliant
Comparative Yearly Lighting Energy Cost per 1000 Lumens	\$2.24 based on 3000 hrs. and \$0.08 per KWH

**COEFFICIENTS OF UTILIZATION (%)**

RCR	RC	80				70				50				0
		RW	70	50	30	10	70	50	30	10	50	30	10	0
1	106	101	96	92	102	98	94	90	91	88	85	73		
2	97	89	82	76	93	86	80	75	81	76	71	62		
3	89	79	71	65	86	76	69	63	72	66	61	54		
4	82	70	62	56	79	68	61	55	65	58	53	47		
5	76	64	55	49	73	62	54	48	58	52	46	41		
6	70	58	49	43	68	56	48	42	53	46	41	37		
7	65	53	44	38	63	51	43	38	49	42	37	33		
8	61	48	40	34	59	47	39	34	45	38	33	30		
9	57	44	37	31	55	43	36	31	41	35	30	27		
10	54	41	33	28	52	40	33	28	38	32	27	25		

**INDOOR CANDELA PLOT**



**AVG. LUMINANCE (Candela/Sq. M.)**

Average Luminance Angle	0.0	22.5	45.0	67.5	90.0
0	5312	5312	5312	5312	5312
30	5098	4640	4250	3980	3892
40	4640	3882	3329	3044	2875
45	4105	3290	2799	2392	2243
50	3335	2666	2255	1893	1800
55	2662	2132	1831	1590	1511
60	2185	1707	1523	1397	1379
65	1853	1345	1306	1328	1401
70	1598	1149	1203	1368	1518
75	1366	1045	1180	1471	1676
80	1144	976	1219	1626	1826
85	864	883	1303	1753	1876

RCR = Room Cavity Ratio

RC = Effective Ceiling Cavity Reflectance RW = Wall Reflectance