

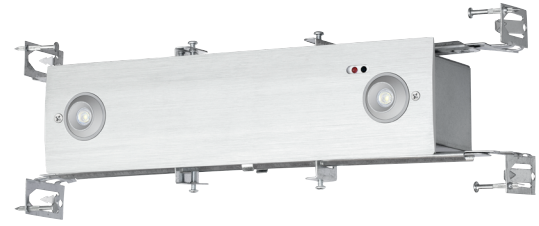
CELEM

RECESSED EMERGENCY LIGHT

tradeSELECT®

FEATURES

- LED life-cycle exceeding 10 years
- Battery re-charge within 24 hours
- Damp location listed 10°C to 40°C (50°F to 104°F)
- Dual-voltage 120 or 277V AC, 60 Hz. input
- Includes long-life Nickel Metal Hydride battery for UL recognized 90 minute emergency lighting
- Provided with test switch and AC-On indicator
- Matching CELC Edge-Lit Combination Exit/Emergency Light



SPECIFICATIONS

CONSTRUCTION

- The lamps are adjustable and integrated into the aluminum trim-plate

INSTALLATION

- The CELEM Series is designed for ceiling mount, and can be applied in hallways, offices and other commercial applications
- The CELEM is provided with a steel back-box complete with adjustable caddy-bar assembly

ELECTRICAL

- Long-life Nickel Metal Hydride battery
- Emergency illumination provided by a single high-power LED with 125 lumens per lamp
- The emergency light is designed to provide UL924 compliant emergency lighting for the full 90 minutes

CERTIFICATIONS

- UL924 Listed for Damp Location
- NFPA 101 and NFPA 70
- OSHA

RELATED PRODUCTS

- ⌘ [CIR Remote](#)
- ⌘ [COR Remote](#)
- ⌘ [CELC Combination Exit/Emergency Light](#)

WARRANTY

- 2 year full unit warranty
- See [HLI Standard Warranty](#) for additional information

ORDERING GUIDE

Catalog Number	Description
CELEM	Recessed mounting Emergency light, 250 lms
CELEMHO	Recessed mounting Emergency light, 400 lms

Note: Remote Capacity Exit will only power Compass Indoor and Outdoor Remote (CIR and COR Series)

ENERGY CONSUMPTION

	120VAC		277VAC	
	Watts	Amps	Watts	Amps
CELEM	2.2W	18mA	2.5W	9mA

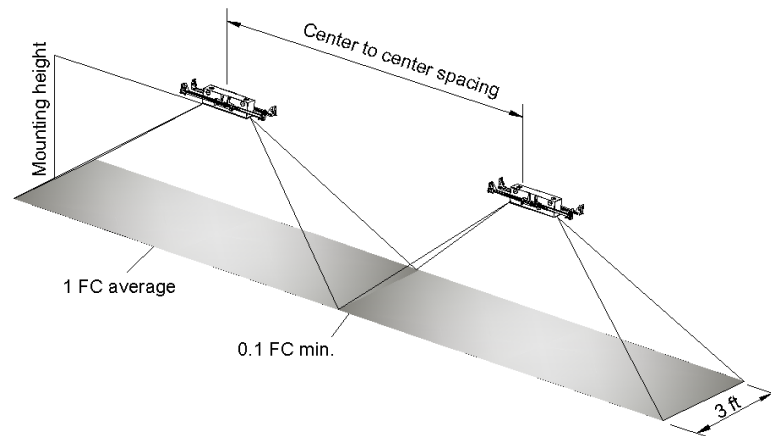
CELEM

RECESSED EMERGENCY LIGHT

MATCHING ACCESSORIES - CELC COMBINATION EDGE-LIT EXIT EMERGENCY LIGHT

Catalog Number	Description
CELCR1RN	Recessed mounting, Single Face, Red Letters, Brushed Aluminum
CELCR2RN	Recessed mounting, Double Face, Red Letters, Brushed Aluminum
CELCR1GN	Recessed mounting, Single Face, Green Letters, Brushed Aluminum
CELCR2GN	Recessed mounting, Double Face, Green Letters, Brushed Aluminum
CELCS1RN	Surface mounting, Single Face, Red Letters, Brushed Aluminum
CELCS2RN	Surface mounting, Double Face, Red Letters, Brushed Aluminum
CELCS1GN	Surface mounting, Single Face, Green Letters, Clear, Brushed Aluminum
CELCS2GN	Surface mounting, Double Face, Green Letters, Mirror, Brushed Aluminum

APPLICATION INFORMATION



No.	Model	Spacing @ 7.5ft. mounting height	Spacing @ 10ft. mounting height
1	CELEM	24ft.	25ft.
2	CELEMHO	30ft.	30ft.

DIMENSIONS

