

6" LED Wall Wash Downlight LF6SL WW

120V-277V
0-10V Dimming

DATE: _____ TYPE: _____

FIRM NAME: _____

PROJECT: _____



Ceiling Cutout: 6 1/4"
Maximum Ceiling Thickness 1 1/4"
For conversion to millimeters,
multiply inches by 25.4
Not to Scale

APPLICATIONS:

LiteFrame LF6SL is a 6" specification grade LED wall wash downlight that utilizes high efficiency LEDs to obtain color consistency, energy savings, and low maintenance costs. 50,000 hours minimum life up to 35°C (95°F) in open plenum applications.

HOUSING:

One-piece 22 gauge non-corrosive steel platform. Pre-wired j-box with snap-on cover for easy access. Snap-in connection from driver compartment allows easy installation of light engine/trim assembly without tools above or below the ceiling and can be upgraded to accommodate technology improvements. Approve for 8 (4 in/4 out) No. 12 AWG conductors rated for 90°C through wiring.

REFLECTOR:

High purity aluminum, Alzak, iridescence suppressed, semi-diffuse reflector. Self-trim standard. Painted white self-trim (WT) available as option.

LED LIGHT ENGINE:

The LF6SL uses the Philips Fortimo DLM LED Module. This module provides controlled color consistency (3 SDCM) from fixture to fixture. The system is designed for optional life and lumen maintenance (>50,000 hours at 70% lumen maintenance). Both reflector and light engine assembly are mechanically retained to housing.

LED DRIVER:

The LF6SL utilizes the Philips Fortimo LED Driver specifically designed to optimize efficiency of the Fortimo DLM Module. Driver is designed to match the 50,000 hours minimum life expectancy of the system. Meets UL Class 2, inherent short circuit protection, self limited, overload protected. If critical temperatures are reached on driver or LED module, integrated thermal feedback loop will gradually reduce current to protect system life. Driver is universal 120V-277V. Optional Lutron Series A driver is also available.

DIMMING:

Comes standard with 0-10V dimming capability. Flicker-free dimming to 10%. 0-10V control may consume up to 1mA. 0-10V, Lutron 2 wire and EcoSystem dimming available to 1% and DMX with RDM (remote device management) dimming to less than 0.1%.

INSTALLATION:

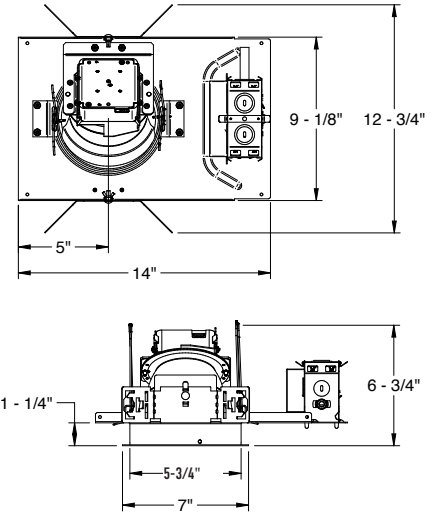
Adjustable Bar hangers included (Not with CP housing). Universal adjustable mounting brackets also accept 1/2" EMT conduit or 1 1/2" or 3/4" lathing channel (by others) or Prescolite 24" bar hangers (B24 or B6).

CERTIFICATIONS:

CSA certified to US and Canadian safety standards. Suitable for damp locations. Approved for through wiring. Non-IC rated.

WARRANTY:

5 year warranty. See www.prescolite.com for details.



See page 3 for CP, LV(E) and NX(W)E lineart

CATALOG NUMBER:

EXAMPLE: LF6SLWW-6LFSL20L40K8WW

Order housing, reflector, and accessories separately

ALTERNATIVE DIMMING TO 1% & 0.1% STANDARD 0-10V DIMMING

| HOUSING | DRIVER OPTION | HOUSING OPTIONS | TRIM APERTURE | KELVIN | CRI | REF. FINISH OPTIONS | REF. COLOR OPTIONS | REFLECTOR OPTIONS | ACCESSORIES |
|--|--|---|---|---|--|---|---|---|--|
| <input type="checkbox"/> LF6SL Standard Lumen 0-10V 10% dimming 120-277V | Standard 0-10V 10% Dimming <input type="checkbox"/> DM1 0-10V dimming at 1% <input type="checkbox"/> DMT^{9,9} SpectraSync™ Tunable White <input type="checkbox"/> DMTW¹⁰ SpectraSync™ Tunable Dim to Warm VOLTAGE OPTION Standard 120V-277V <input type="checkbox"/> 347 347V | <input type="checkbox"/> CP^{3,5,11} Chicago Plenum <input type="checkbox"/> WW² Wall Wash <input type="checkbox"/> LV⁷ Lutron Vive Enabled, 0-10V, 120-277V <input type="checkbox"/> NXWE^{5,12,13} NX Wireless Enabled <input type="checkbox"/> NXE^{5,12,13} NX Enabled, Dual SmartPorts | <input type="checkbox"/> 6LFSL Semi-Diffuse Clear Alzak OUTPUT <input type="checkbox"/> 11L 1100 Lumen Module <input type="checkbox"/> 15L 1500 Lumen Module <input type="checkbox"/> 20L¹¹ 2000 Lumen Module | <input type="checkbox"/> 27K 2700 Kelvin <input type="checkbox"/> 30K 3000 Kelvin <input type="checkbox"/> 35K 3500 Kelvin <input type="checkbox"/> 40K 4000 Kelvin <input type="checkbox"/> 50K 5000 Kelvin <input type="checkbox"/> 2230TD¹⁴ 2200K-3000K SpectraSync™ Dim to Warm <input type="checkbox"/> 2750T¹⁴ 2700K-5000K SpectraSync™ Tunable White <input type="checkbox"/> 2765T¹⁴ 2700K-6500K SpectraSync™ Tunable | <input type="checkbox"/> 8 80+ CRI <input type="checkbox"/> 9 90+ CRI | Standard Semi-Diffuse <input type="checkbox"/> SP Specular <input type="checkbox"/> SS Semi-Specular <input type="checkbox"/> MFC American Matte™ <input type="checkbox"/> V Kurt Versen Specular <input type="checkbox"/> VS Kurt Versen Softglow® <input type="checkbox"/> VSS Kurt Versen SoftSheen™ | Standard Clear Alzak <input type="checkbox"/> CG Champagne Gold Alzak <input type="checkbox"/> GD Gold Alzak <input type="checkbox"/> BL Black Alzak <input type="checkbox"/> WE Wheat Alzak <input type="checkbox"/> LW Light Wheat Alzak <input type="checkbox"/> PW Pewter Alzak <input type="checkbox"/> WH Painted Matte White Reflector and Flange <input type="checkbox"/> BC Painted Black Reflector and Flange | <input type="checkbox"/> WW² Wall Wash TRIM OPTIONS <input type="checkbox"/> WT Painted White Flange Only <input type="checkbox"/> TRG Trim Ring Gasket <input type="checkbox"/> WF Wide Flange | <input type="checkbox"/> B24⁴ Set of two 24" bar hangers for T-bar ceilings <input type="checkbox"/> B6⁴ Set of two (2) bar hangers for ceiling joist up to 24" centers <input type="checkbox"/> LFSC6 6" Reflector screw cover <input type="checkbox"/> LFSC6EM 6" Reflector screw cover for EM <input type="checkbox"/> LiteGear⁶ Inverter, single phase central lighting, 125VA-250VA <input type="checkbox"/> LPS Series⁶ LitePower micro-inverter, 20VA-55VA |

**Use with EDM/2DM/DMX dimming option:
Match Housing to Trim Output**

| | | | |
|--|---|---|--|
| <input type="checkbox"/> LF6SL11L | <input type="checkbox"/> EDM¹ Hi-Lume 1% EcoSystem LED Driver | <input type="checkbox"/> 120 120V | <input type="checkbox"/> LVE (EDM Only) Lutron Vive Enabled, EcoSystem |
| <input type="checkbox"/> LF6SL15L | <input type="checkbox"/> 2DM¹ Hi-Lume 1% 2-wire LED Driver (120V only) | <input type="checkbox"/> 277 277V | |
| <input type="checkbox"/> LF6SL20L | <input type="checkbox"/> DMX¹ DMX with RDM dimming to <0.1% | | |

*EDM, 2DM & DMX also available with EMR and WWW

Notes:
 1 For EDM, 2DM, and DMX options, housing output must match trim output
 2 WW option required on both housing and trim.
 3 Not available with 347V
 4 For WW fixtures bar hanger accessory should be selected with CP housing, not included as standard.
 5 Not available with DMX, LV, or LVE
 6 See Central Inverter compatibility note and web links on page 2
 7 LV requires standard dimming or DM1
 8 Must select either 2750T or 2765T Kelvin with DMT driver option
 9 Not available with LV or LVE
 10 Must select 2230TD with DMTW driver option
 11 Not compatible with DMT or DMTW
 12 Not available with CP option
 13 Not available with EDM, 2DM or DMX
 14 Only available in 90+ CRI

PHOTOMETRIC DATA

LiteFrame - 6" LF6SL WW Wall Wash

| DRIVER DATA | 6LFSL20L | 6LFSL15L | 6LFSL11L |
|-----------------------|-------------------------------|-------------------------------|-------------------------------|
| Input Voltage | 120-277V | 120-277V | 120-277V |
| Input Frequency | 50/60 Hz | 50/60 Hz | 50/60 Hz |
| Input Current | 0.180A (120V) 0.08 (277V) | 0.133A (120V) 0.058 (277V) | 0.105(120V) 0.045 (277V) |
| Input Power | 21.6W | 16.0W | 12.6W |
| Power Factor | ≥0.90 | ≥0.90 | 0.90 |
| THD | <20% | <20% | <20% |
| EMI Filtering | FCC 47CFR Part 15, Class A | FCC 47CFR Part 15, Class A | FCC 47CFR Part 15, Class A |
| Operating Temperature | -20°C to 35°C | -20°C to 35°C | -20°C to 35°C |
| Dimming | 0-10V | 0-10V | 0-10V |

Over-voltage, over-current, short-circuit protected

*Power consumption and photometric output may vary slightly with various driver and CRI options.

Lumen Multiplier Table

Photometrics published below are for the 3000K, 80 CRI. This table may be used to approximate the lumen values at different Kelvin temperatures and CRI.

| | |
|-------------|------|
| 4000 Kelvin | 1.07 |
| 3500 Kelvin | 1.00 |
| 3000 Kelvin | 1.00 |
| 2700 Kelvin | 0.95 |
| 80 CRI..... | 1.00 |
| 90 CRI..... | 0.91 |

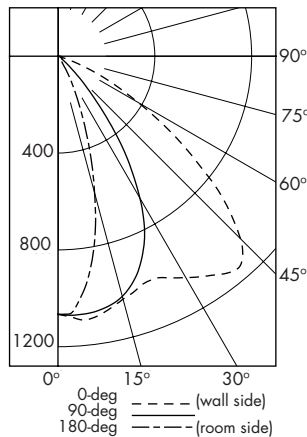
Delivered Lumens

The table below shows the delivered lumens for the various lumen outputs.

| Output | CRI | Distribution | Delivered Lumens | Input Watts | Lumens Per Watt | Full Catalog String |
|--------|-----|--------------|------------------|-------------|-----------------|-----------------------|
| 11L | 80 | WW | 840 | 12.6 | 67 | LF6SL-6LFSL11L30K8 WW |
| 15L | 80 | WW | 1129 | 16.0 | 71 | LF6SL-6LFSL15L30K8 WW |
| 20L | 80 | WW | 1499 | 21.6 | 69 | LF6SL-6LFSL20L30K8 WW |

LF6SL-6LFSL20L30K8WW

LED Light Engine: 3000K, 80 CRI
System Wattage: 21.6W
Fixture Delivered Lumens: 1499
Fixture Efficacy: 69



CANDELA DISTRIBUTION

| DEG | 0 | 90 | 180 |
|-----|------|------|------|
| 0 | 1066 | 1066 | 1066 |
| 5 | 1093 | 1071 | 1011 |
| 15 | 1039 | 1027 | 584 |
| 25 | 1009 | 844 | 178 |
| 35 | 1105 | 475 | 27 |
| 45 | 1066 | 120 | 23 |
| 55 | 614 | 21 | 26 |
| 65 | 209 | 15 | 23 |
| 75 | 8 | 12 | 20 |
| 85 | 1 | 6 | 10 |
| 90 | 0 | 0 | 0 |

LUMINANCE DATA IN CANDELA/SQ. METER

| Angle in Vertical | 0 DEG | 90 DEG | 180 DEG |
|-------------------|-------|--------|---------|
| 45° | 82644 | 9303 | 1783 |
| 55° | 58684 | 2007 | 2485 |
| 65° | 27111 | 1946 | 2983 |
| 75° | 1694 | 2542 | 4236 |
| 85° | 629 | 3774 | 6290 |

| MULTIPLE UNITS | |
|--------------------|--------------------|
| UNITS ON 3' CENTER | UNITS ON 4' CENTER |
| 1' 2' 3' 4' | |

2.5' DISTANCE FIXTURE MOUNTED OUT FROM WALLS FOOTCANDLE DISTRIBUTION ON WALL SURFACE (Direct Only)

| DISTANCE FROM CEILING IN FEET | UNITS ON 3' CENTER | | | | UNITS ON 4' CENTER | | | |
|-------------------------------|--------------------|----|----|---|--------------------|----|----|----|
| | 3 | 1 | 1 | 1 | 4 | 2 | 4 | 4 |
| 1 | 3 | 1 | 1 | 1 | 4 | 2 | 4 | 4 |
| 2 | 53 | 16 | 1 | 1 | 54 | 33 | 54 | 54 |
| 3 | 57 | 32 | 5 | 1 | 62 | 64 | 62 | 58 |
| 4 | 32 | 26 | 10 | 2 | 41 | 52 | 41 | 35 |
| 5 | 18 | 16 | 10 | 3 | 28 | 33 | 28 | 23 |
| 6 | 11 | 11 | 8 | 4 | 20 | 22 | 20 | 17 |
| 7 | 8 | 8 | 7 | 4 | 14 | 15 | 14 | 13 |
| 8 | 6 | 6 | 5 | 4 | 11 | 12 | 11 | 10 |
| 9 | 5 | 5 | 4 | 3 | 9 | 9 | 9 | 9 |

LF6SL-6LFSL20L30K8WW

Test No. 18.00440

Test No. 18.00440

Tested at 25°C Ambient in accordance to IESNA LM-79-2008



Web: www.prescolite.com • Tech Support: (888) 777-4832
701 Millennium Boulevard • Greenville, SC 29607 U.S.A. • Phone (864) 678-1000
Copyright ©2018 Prescolite, Inc., a division of Hubbell Lighting, Inc. All Rights Reserved
Specifications subject to change without notice. • Printed in U.S.A. • LFR-LED-026 • 01/16/19

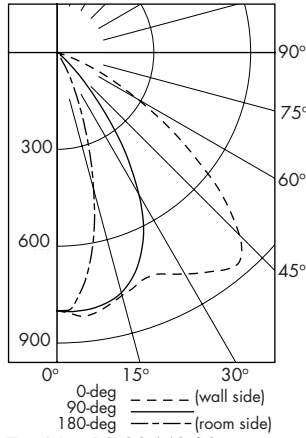


PHOTOMETRIC DATA

LiteFrame - 6" LF6SL WW Wall Wash

LF6SL-6LFSL15L30K8WW

LED Light Engine: 3000K, 80 CRI
 System Wattage: 16.0W
 Fixture Delivered Lumens: 1129
 Fixture Efficacy: 71



| CANDELA DISTRIBUTION | | | |
|----------------------|-----|-----|-----|
| DEG | 0 | 90 | 180 |
| 0 | 803 | 803 | 803 |
| 5 | 823 | 806 | 761 |
| 15 | 782 | 773 | 440 |
| 25 | 760 | 636 | 134 |
| 35 | 832 | 358 | 20 |
| 45 | 803 | 90 | 17 |
| 55 | 462 | 16 | 20 |
| 65 | 157 | 11 | 17 |
| 75 | 6 | 9 | 15 |
| 85 | 1 | 5 | 8 |
| 90 | 0 | 0 | 0 |

LUMINANCE DATA IN CANDELA/SQ. METER

| Angle in Vertical | 0 DEG | 90 DEG | 180 DEG |
|-------------------|-------|--------|---------|
| 45° | 62172 | 40826 | 6999 |
| 55° | 44146 | 18838 | 1510 |
| 65° | 20395 | 4196 | 1464 |
| 75° | 1275 | 637 | 1912 |
| 85° | 473 | 946 | 2839 |

| MULTIPLE UNITS | | | | | |
|--------------------|----|----|----|--------------------|----|
| UNITS ON 3' CENTER | | | | UNITS ON 4' CENTER | |
| 1' | 2' | 3' | 4' | 1' | 2' |

| 2.5' DISTANCE FIXTURE MOUNTED OUT FROM WALLS FOOTCANDLE DISTRIBUTION ON WALL SURFACE (Direct Only) | | | | | | | | | | | | |
|---|---|----|----|---|---|---|----|----|----|----|----|----|
| DISTANCE FROM CEILING IN FEET | 1 | 8 | 1 | 1 | 0 | 3 | 2 | 3 | 3 | 2 | 3 | |
| | 2 | 44 | 16 | 1 | 1 | 1 | 40 | 25 | 40 | 40 | 11 | 40 |
| | 3 | 39 | 24 | 5 | 1 | 1 | 47 | 48 | 47 | 43 | 30 | 44 |
| | 4 | 21 | 18 | 8 | 2 | 1 | 31 | 39 | 31 | 26 | 31 | 26 |
| | 5 | 12 | 11 | 8 | 3 | 1 | 21 | 25 | 21 | 17 | 23 | 18 |
| | 6 | 8 | 8 | 6 | 3 | 1 | 15 | 16 | 15 | 13 | 16 | 13 |
| | 7 | 5 | 5 | 5 | 3 | 2 | 11 | 11 | 11 | 10 | 11 | 10 |
| | 8 | 4 | 4 | 4 | 3 | 2 | 8 | 9 | 8 | 8 | 9 | 8 |
| | 9 | 3 | 3 | 3 | 3 | 2 | 7 | 7 | 7 | 6 | 7 | 7 |

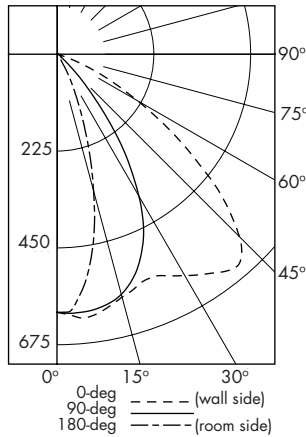
LF6SL-6LFSL15L30K8WW Test No. 18.00440-02

Test No. 18.00440-02

Tested at 25°C Ambient in accordance to IESNA LM-79-2008

LF6SL-6LFSL11L30K8WW

LED Light Engine: 3000K, 80 CRI
 System Wattage: 12.6W
 Fixture Delivered Lumens: 840
 Fixture Efficacy: 67



| CANDELA DISTRIBUTION | | | |
|----------------------|-----|-----|-----|
| DEG | 0 | 90 | 180 |
| 0 | 598 | 598 | 598 |
| 5 | 613 | 601 | 567 |
| 15 | 583 | 576 | 328 |
| 25 | 566 | 473 | 100 |
| 35 | 620 | 266 | 15 |
| 45 | 598 | 67 | 13 |
| 55 | 344 | 12 | 15 |
| 65 | 117 | 8 | 13 |
| 75 | 4 | 7 | 11 |
| 85 | 1 | 3 | 6 |
| 90 | 0 | 0 | 0 |

LUMINANCE DATA IN CANDELA/SQ. METER

| Angle in Vertical | 0 DEG | 90 DEG | 180 DEG |
|-------------------|-------|--------|---------|
| 45° | 46312 | 30411 | 5213 |
| 55° | 32885 | 14032 | 1125 |
| 65° | 15192 | 3126 | 1090 |
| 75° | 949 | 475 | 1424 |
| 85° | 353 | 705 | 2115 |

| MULTIPLE UNITS | | | | | |
|--------------------|----|----|----|--------------------|----|
| UNITS ON 3' CENTER | | | | UNITS ON 4' CENTER | |
| 1' | 2' | 3' | 4' | 1' | 2' |

| 2.5' DISTANCE FIXTURE MOUNTED OUT FROM WALLS FOOTCANDLE DISTRIBUTION ON WALL SURFACE (Direct Only) | | | | | | | | | | | | |
|---|---|----|----|---|---|---|----|----|----|----|----|----|
| DISTANCE FROM CEILING IN FEET | 1 | 6 | 1 | 1 | 0 | 0 | 2 | 1 | 2 | 2 | 1 | 2 |
| | 2 | 33 | 12 | 1 | 0 | 0 | 30 | 18 | 30 | 30 | 8 | 30 |
| | 3 | 29 | 18 | 4 | 1 | 0 | 35 | 36 | 35 | 32 | 23 | 32 |
| | 4 | 16 | 13 | 6 | 1 | 0 | 23 | 29 | 23 | 20 | 23 | 20 |
| | 5 | 9 | 8 | 6 | 2 | 1 | 16 | 18 | 16 | 13 | 17 | 13 |
| | 6 | 6 | 6 | 5 | 2 | 1 | 11 | 12 | 11 | 9 | 12 | 10 |
| | 7 | 4 | 4 | 3 | 2 | 1 | 8 | 9 | 8 | 7 | 8 | 7 |
| | 8 | 3 | 3 | 3 | 2 | 1 | 6 | 6 | 6 | 6 | 6 | 6 |
| | 9 | 3 | 2 | 2 | 2 | 1 | 5 | 5 | 5 | 5 | 5 | 5 |

LF6SL-6LFSL11L30K8WW Test No. 18.00440-01

Test No. 18.00440-01

Tested at 25°C Ambient in accordance to IESNA LM-79-2008



LiteFrame - 6" LF6SL WW Wall Wash

Dimming Compatibility Table

| Dimming Ballast | Manufacturer | Web Link |
|-----------------|---|---|
| DM/DM1 | Lutron DDTV | http://bit.ly/11jSvZg |
| DM/DM1 | Leviton AWRMG-7xx, AWSMG-7xx, AWSMT-7xx | http://bit.ly/1Bjn2R9 |
| EDM | Lutron | http://bit.ly/1vtjHA1 |
| 2DM | Lutron | http://bit.ly/1S4WjXK |

DMX

See instruction sheet on www.prescolite.com for connection & installation information.
Other useful links: <http://www.eldoled.com/led-drivers/powerdrive/50-watt/ac-561s/>

Central Inverters

For full fixture output in back-up mode, we recommend you visit www.dual-lite.com for your Central Lighting Inverter options. Please contact your local Hubbell representative for any assistance with proper sizing and loading of your inverter selection. Central lighting inverters must be ordered separately.

LiteGear: www.dual-lite.com/products/litegear_lg_series

LPS Series: www.dual-lite.com/products/lps

SpectraSync™ Color Tuning Technology:

Control your space based on the needs of the application, specific activities throughout the day and preferences of the occupants with two distinct SpectraSync™ Color Tuning Technology.

Dim to Warm: Dim to Warm mimics the familiar warming effect that occurs with traditional incandescent sources as they are dimmed. (Available with 2200K-3000K).

Tunable White: Tunable White offers users the ability to tailor CCT to their personal preference, enhancing task visibility, material and colors or the aesthetics of the space. (Available with 2700K-5000K or 2700K-6500K).

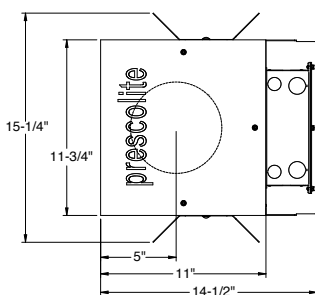
See separate [SpectraSync™ Tech Sheet](#) for additional details.

NX Distributed Intelligence:

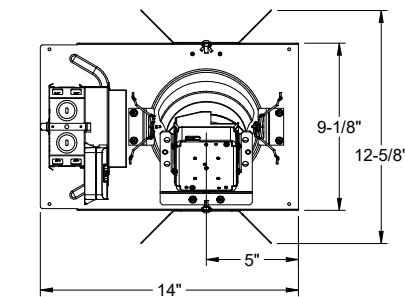
Supports indoor and outdoor applications, wired, wireless and hybrid networked NX lighting control deployments and enables emerging applications such as Hubbell Lighting's SpectraSync™ color tuning technology.

See separate [NX™ Solutions Guide](#) for additional details.

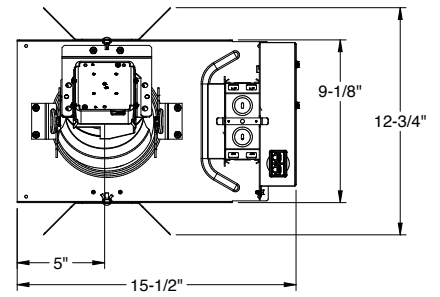
See Hubbell Controls Solution [NX Brochure](#).



LF6SLWW CP



LF6SLWW LV(E)



LF6SLWW NX(W)E

