

6" Square Wall Wash LED Downlight **LF6SQML WW** 120V - 277V 0-10V Dimming

APPLICATIONS:

LiteFrame LF6SQML wall wash is a 6" specification grade LED downlight that utilizes high efficiency LEDs to obtain color consistency, energy savings, and low maintenance costs. 50,000 hours minimum life up to 35°C (95°F) in open plenum applications.

HOUSING:

One-piece 22 gauge non-corrosive steel platform. Pre-wired j-box with snap-on cover for easy access. Snap-in connection from driver compartment allows easy installation of light engine/trim assembly without tools above or below the ceiling and can be upgraded to accommodate technology improvements. Approved for 8 (4 in/4 out) No. 12 AWG conductors rated for 90°C through wiring.

REFLECTOR:

High purity aluminum, Alzak, iridescence suppressed, semi-diffuse upper reflector. Wall wash comes standard with a self-trim and diffuse lens. Painted white self-trim (WT) available as option. Reflector is made from anodized Alzak Miro 4 aluminum.

LED LIGHT ENGINE:

The LF6SQML uses the Philips Fortimo DLM LED Module. This module provides controlled color consistency (3 SDCM) from fixture to fixture. The system is designed for optional life and lumen maintenance (>50,000 hours at 70% lumen maintenance). Both reflector and light engine assembly are mechanically retained to housing.

LED DRIVER:

The LF6SQML utilizes the Philips Fortimo LED Driver specifically designed to optimize efficiency of the Fortimo DLM Module. Driver is designed to match the 50,000 hour minimum life expectancy of the system. Meets UL Class 2, inherent short circuit protection, self limited, overload protected. If critical temperatures are reached on driver or LED module, integrated thermal feedback loop will gradually reduce current to protect system life. Driver is universal 120V-277V. Optional Lutron Series A driver is also available.

DIMMING:

Comes standard with 0-10V dimming capability. Flicker-free dimming to 10%. 0-10V control may consume up to 1mA. 0-10V, Lutron 2 wire and EcoSystem dimming available to 1% and DMX with RDM (remote device management) dimming to less than 0.1%.

INSTALLATION:

Adjustable Bar hangers included (not with CP option). Universal adjustable mounting brackets also accept 1/2" EMT conduit or 1 1/2" or 3/4" lathing channel (by others) or Prescolite 24" bar hangers (B24 or B6). Housing provides up to 6° rotational adjustment of the square trim.

CERTIFICATIONS:

CSA certified to US and Canadian safety standards. Suitable for wet locations. Approved for through wiring. Non-IC rated.

WARRANTY:

5 year warranty. See www.prescolite.com for details.

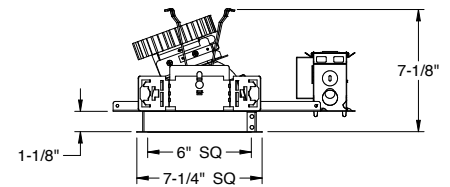
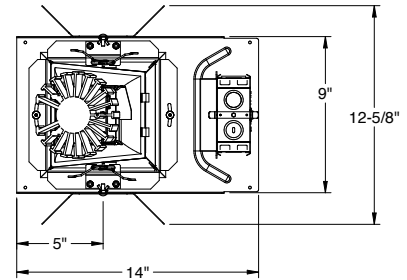
DATE: _____ TYPE: _____

FIRM NAME: _____

PROJECT: _____

LiteFrame®

Ceiling Cutout: 6-3/4" x 6-3/4"
Maximum Ceiling Thickness 1 1/4"
For conversion to millimeters,
multiply inches by 25.4
Not to Scale



See page 3 for NX(W)E
and CP lineart

CATALOG NUMBER:

Order housing, reflector, and accessories separately

EXAMPLE: LF6SQMLWW-6SQML30L35K8WW

HOUSING	DRIVER OPTIONS	VOLTAGE OPTION	HOUSING OPTIONS	TRIM APERTURE	KELVIN	REF. COLOR OPTIONS	REFLECTOR OPTIONS	ACCESSORIES
<input type="checkbox"/> LF6SQML Standard 120V-277V 0-10V dimming at 10%	Standard 0-10V 10% Dimming <input type="checkbox"/> DM1 ¹ 0-10V dimming at 1% <input type="checkbox"/> EDM ^{3,6} Hi-Lume 1% EcoSystem LED Driver <input type="checkbox"/> 2DM ^{3,6} Hi-Lume 1% 2-wire LED Driver (120V only) <input type="checkbox"/> DMX ^{3,6,8} DMX with RDM dimming to <0.1%	Standard 120V-277V <input type="checkbox"/> 120 120V <input type="checkbox"/> 277 277V <input type="checkbox"/> 347 347V	<input type="checkbox"/> CP ^{3,4,10} Chicago Plenum <input type="checkbox"/> WW ² Wall Wash <input type="checkbox"/> LV ⁷ Lutron Vive Enabled, 0-10V, 120-277V <input type="checkbox"/> LVE (EDM Only) Lutron Vive Enabled, EcoSystem <input type="checkbox"/> NXWE ^{5,9,10} NX Wireless Enabled <input type="checkbox"/> NXE ^{8,9,10} NX Enabled, Dual SmartPorts	<input type="checkbox"/> 6SQML30L Semi-Diffuse Clear Alzak Reflector with 3000 Lumen Module	<input type="checkbox"/> 27K 2700 Kelvin <input type="checkbox"/> 30K 3000 Kelvin <input type="checkbox"/> 35K 3500 Kelvin <input type="checkbox"/> 40K 4000 Kelvin <input type="checkbox"/> 50K 5000 Kelvin <div>CRI</div> <input type="checkbox"/> 8 80+ CRI <input type="checkbox"/> 9 90+ CRI	Standard Clear Alzak <input type="checkbox"/> CG Champagne Gold Alzak <input type="checkbox"/> GD Gold Alzak <input type="checkbox"/> BL Black Alzak <input type="checkbox"/> WE Wheat Alzak <input type="checkbox"/> LW Light Wheat Alzak <input type="checkbox"/> PW Pewter Alzak <input type="checkbox"/> WH Painted Matte White Reflector and Flange <input type="checkbox"/> BC Painted Black Reflector and Flange	<input type="checkbox"/> WW ² Wall Wash <div>TRIM OPTIONS</div> <input type="checkbox"/> WT Painted White Flange Only	<input type="checkbox"/> B24 ⁴ Set of two 24" bar hangers for T-bar ceilings <input type="checkbox"/> B6 ⁴ Set of two (2) bar hangers for ceiling joist up to 24" centers <input type="checkbox"/> LiteGear ⁵ Inverter, single phase central lighting, 125VA-250VA <input type="checkbox"/> LPS Series ⁵ LitePower micro- inverter, 20VA-55VA

Notes:

- For DM1, do not specify a voltage if 120 or 277
- WW option required on both housing and trim.
- Not available with 347V, LV or LVE
- Bar hanger accessory should be selected with CP housing, not included as standard
- See Central Inverter compatibility note and web links on page 2
- Voltage must be specified for EDM, 2DM and DMX
- LV requires standard dimming or DM1
- Not available with CP option
- Not available with LV or LVE
- Not available with EDM, 2DM, or DMX

PHOTOMETRIC DATA

LiteFrame - 6" LF6SQML WW Wall Wash

DRIVER DATA

6SQML30L

Input Voltage	120V-277V
Input Frequency	60 Hz
Input Current	0.272A (120V) 0.118A (277V)
Input Power	32.7W
Power Factor	≥0.90
THD	<20%
EMI Filtering	FCC 47CFR Part 15, Class A
Operating Temperature	-20°C to 35°C
Dimming	0-10V
Over-voltage, over-current, short-circuit protected	

*Power consumption and photometric output may vary slightly with various driver and CRI options.

Lumen Multiplier Table

Photometrics published below are for the 3000K, 80 CRI.
This table may be used to approximate the lumen values at different Kelvin temperatures and CRI.

4000 Kelvin	1.07
3500 Kelvin	1.00
3000 Kelvin	1.00
2700 Kelvin	0.95
80 CRI.....	1.00
90 CRI.....	0.91

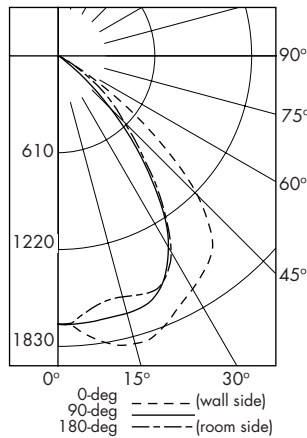
Delivered Lumens

The table below shows the delivered lumens for the various lumen outputs.

Output	CRI	Distribution	Delivered Lumens	Input Watts	Lumens Per Watt	Full Catalog String
30L	80	WW	3140	32.7	96	LF6SQML-6SQML30L30K8WW

LF6SQSL-6SQSL30L30K8WW

LED Light Engine: 3000K, 80 CRI
System Wattage: 32.7W
Fixture Delivered Lumens: 3140
Fixture Efficacy: 96



CANDELA DISTRIBUTION

DEG	0	90	180
0	1689	1689	1689
5	1747	1726	1726
15	1874	1843	1843
25	1764	1874	1874
35	1625	1721	1721
45	1242	1323	1323
55	412	493	493
65	20	20	20
75	12	6	6
85	0	0	0
90	0	0	0

LUMINANCE DATA IN CANDELA/SQ. METER

Angle in Vertical	0 DEG	90 DEG	180 DEG
45°	75547	80490	28419
55°	30900	36993	3699
65°	2067	2067	1772
75°	1929	964	482
85°	0	0	0

MULTIPLE UNITS									
UNITS ON 3' CENTER					UNITS ON 4' CENTER				

2.5' DISTANCE FIXTURE MOUNTED OUT FROM WALLS FOOTCANDLE DISTRIBUTION ON WALL SURFACE (Direct Only)

DISTANCE FROM CEILING IN FEET	3	2	2	1	1	5	4	5	5	4	5
1	34	18	2	1	1	35	36	35	35	16	35
2	70	53	10	2	1	80	106	80	72	74	72
3	48	42	18	4	1	66	85	66	54	72	54
4	30	28	18	6	2	48	56	48	40	51	40
5	20	19	14	8	3	35	38	35	30	36	30
6	14	14	11	7	4	26	28	26	23	26	24
7	11	10	9	7	4	20	21	20	18	20	19
8	9	8	7	6	4	16	17	16	15	16	16
9											

LF6SQSL-6SQSL30L30K8WW

Test No. 18.00416-03

Test No. 18.00416-03

Tested at 25°C Ambient in accordance to IESNA LM-79-2008



Web: www.prescolite.com • Tech Support: (888) 777-4832
701 Millennium Boulevard • Greenville, SC 29607 U.S.A. • Phone (864) 678-1000
Copyright ©2018 Prescolite, Inc., a division of Hubbell Lighting, Inc. All Rights Reserved
Specifications subject to change without notice. • Printed in U.S.A. • LFR-LED-020 • 01/16/19



LiteFrame - 6" LF6SQML WW Wall Wash

Dimming Compatibility Table

Dimming Ballast	Manufacturer	Web Link
DM/DM1	Lutron DTV	http://bit.ly/11jSvZg
DM/DM1	Leviton AWRMG-7xx, AWSMG-7xx, AWSMT-7xx	http://bit.ly/1Bjn2R9
EDM	Lutron	http://bit.ly/1vtjHAL
2DM	Lutron	http://bit.ly/1S4WjXK

DMX

See instruction sheet on www.prescolite.com for connection & installation information.

Other useful links: <http://www.eldoled.com/led-drivers/powerdrive/50-watt/ac-561s/>

Central Inverters

For full fixture output in back-up mode, we recommend you visit www.dual-lite.com for your Central Lighting Inverter options. Please contact your local Hubbell representative for any assistance with proper sizing and loading of your inverter selection. Central lighting inverters must be ordered separately.

LiteGear: www.dual-lite.com/products/litegear_lg_series

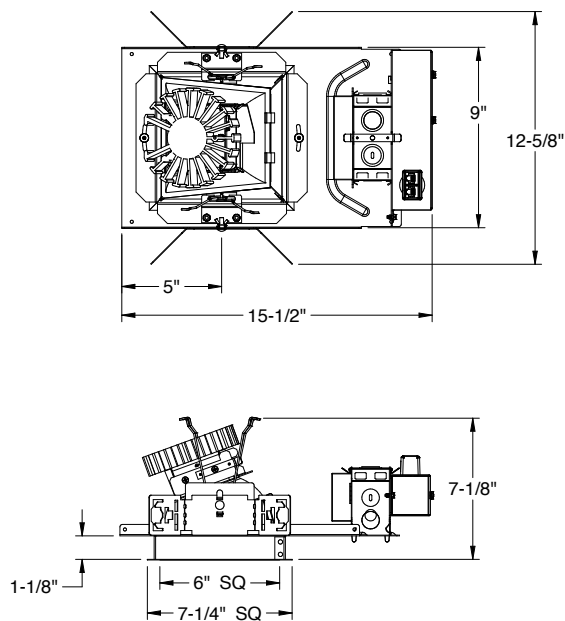
LPS Series: www.dual-lite.com/products/lps

NX Distributed Intelligence: **NX** DISTRIBUTED INTELLIGENCE

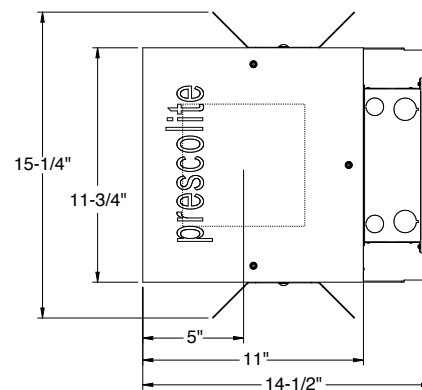
Supports indoor and outdoor applications, wired, wireless and hybrid networked NX lighting control deployments and enables emerging applications such as Hubbell Lighting's SpectraSync™ color tuning technology.

See separate [NX™ Solutions Guide](#) for additional details.

See Hubbell Controls Solution [NX Brochure](#).



LF6SQMLWW NX(W)E



LF6SQMLWW CP



Web: www.prescolite.com • Tech Support: (888) 777-4832
 701 Millennium Boulevard • Greenville, SC 29607 U.S.A. • Phone (864) 678-1000
 Copyright ©2018 Prescolite, Inc., a division of Hubbell Lighting, Inc. All Rights Reserved
 Specifications subject to change without notice. • Printed in U.S.A. • LFR-LED-020 • 01/16/19

