

CLH SERIES - CLASSIFIED LOCATION HIGH BAY

PHOTOMETRIC DATA: IES_CLH_5K_CDL_14 00864 | 1.05.15

LUMINAIRE DATA

CLH-5K-CDL
Luminaire-Food processing high bay with prismatic conical drop

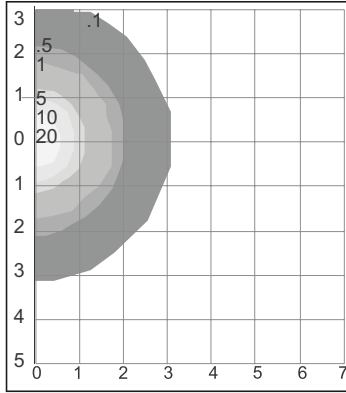
DRIVER	LEDINTA0024V41DLO
Driver Factor	1.00
Lamp	LED
Lumens	23,122
Watts	217.9
Efficacy	106
Mounting	Pendant/ Hook
Spacing Criterion [0-180]	1.10

LUMINOUS OPENING IN FEET

Length	1.17 ft. (Diameter)
Width	1.17 ft. (Diameter)

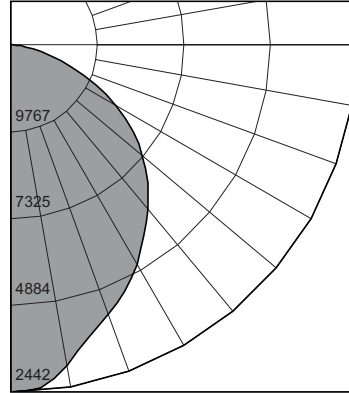
ZONE	LUMENS	% FIXT.
0-20	3,316	14.3
0-30	6,831	29.5
0-40	10,939	47.3
0-60	18,912	81.8
0-80	22,769	98.5
0-90	23,106	99.9
0-180	23,122	100.0

ISOMETRIC FOOT CANDLES



Distance In Units Of Mounting Height
Values Based On 20 Foot Mounting Height

POLAR GRAPH



Maximum Candela = 9767 Located At Horizontal Angle = 0, Vertical Angle = 0

PHOTOMETRIC DATA: IES_CLH_5K_P95_15 00001 | 1.05.15

LUMINAIRE DATA

CLH-5K-P95
Luminaire-Food processing high bay with acrylic frosted flat

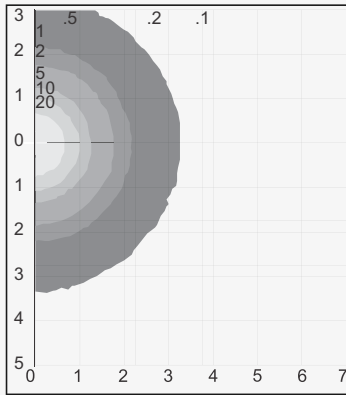
DRIVER	LEDINTA0024V41DLO
Driver Factor	1.00
Lamp	LED
Lumens	24,627
Watts	218.1
Efficacy	113
Mounting	Pendant/ Hook
Spacing Criterion [0-180]	1.24

LUMINOUS OPENING IN FEET

Length	1.25 ft (Diameter)
Width	1.25 ft (Diameter)

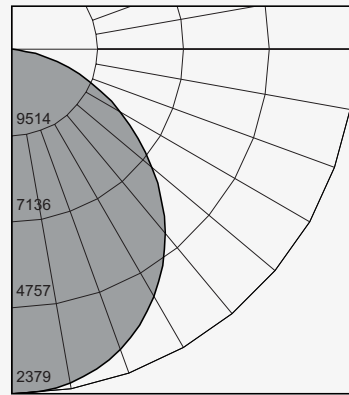
ZONE	LUMENS	% FIXT.
0-20	3,476	14.1
0-30	7,342	29.8
0-40	11,897	48.3
0-60	20,252	82.2
0-80	24,356	98.9
0-90	24,627	100.0
0-180	24,627	100.0

ISOMETRIC FOOT CANDLES



Distance In Units Of Mounting Height
Values Based On 20 Foot Mounting Height

POLAR GRAPH



Maximum Candela = 9514 Located At Horizontal Angle = 0, Vertical Angle = 0

PHOTOMETRIC DATA: IES_CLH_5K_DLR_14 00863 | 1.05.15

LUMINAIRE DATA

CLH-5K-DLR
Luminaire-Food processing high bay with prismatic drop lens

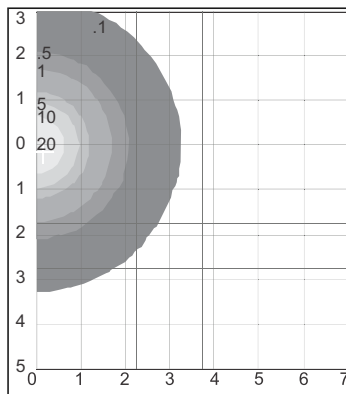
DRIVER	LEDINTA0024V41DLO
Driver Factor	1.00
Lamp	LED
Lumens	22,484
Watts	217.9
Efficacy	103
Mounting	Pendant/ Hook
Spacing Criterion [0-180]	1.24

LUMINOUS OPENING IN FEET

Length	1.17 ft (Diameter)
Width	1.17 ft (Diameter)

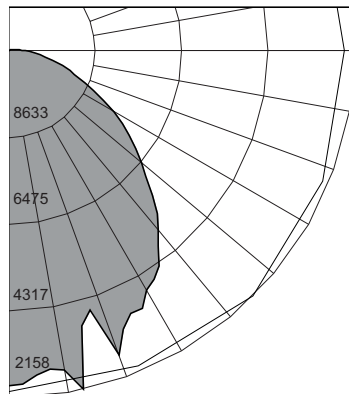
ZONE	LUMENS	% FIXT.
0-20	2,926	13.0
0-30	6,281	27.9
0-40	10,305	45.8
0-60	17,455	77.6
0-80	21,279	94.6
0-90	21,992	97.8
0-180	22,484	100.0

ISOMETRIC FOOT CANDLES



Distance In Units Of Mounting Height
Values Based On 20 Foot Mounting Height

POLAR GRAPH



Maximum Candela = 8633 Located At Horizontal Angle = 45, Vertical Angle = 12.5

PHOTOMETRIC DATA: IES_CLH_5K_SPC_14 00862 | 1.05.15

LUMINAIRE DATA

CLH-5K-SPC

Luminaire-Food processing high bay with "frosted" sage lens

DRIVER LEDINTA0024V41DLO

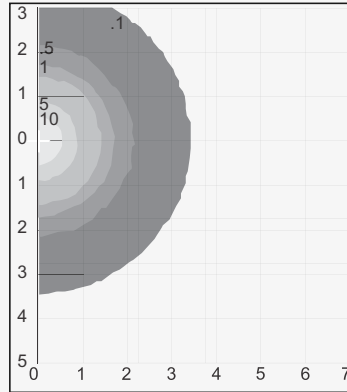
Driver Factor	1.00
Lamp	LED
Lumens	21,636
Watts	217.6
Efficacy	99
Mounting	Pendant/Hook
Spacing Criterion (0-180)	1.24

LUMINOUS OPENING IN FEET

Length	1.17 ft (Diameter)
Width	1.17 ft (Diameter)

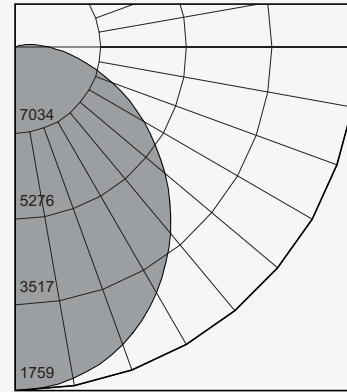
ZONE	LUMENS	% FIXT.
0-20	2,559	11.8
0-30	5,401	25.0
0-40	8,780	40.6
0-60	15,417	71.3
0-80	19,800	91.5
0-90	20,890	96.6
0-180	21,636	100.0

ISOMETRIC FOOT CANDLES



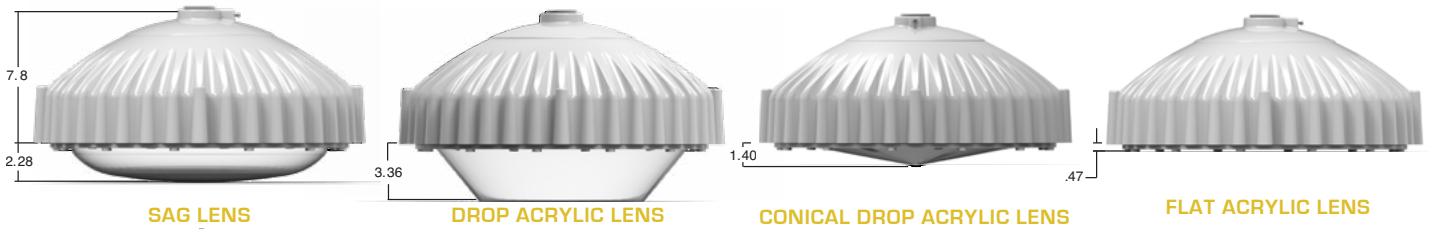
Distance In Units Of Mounting Height
Values Based On 20 Foot Mounting Height

POLAR GRAPH

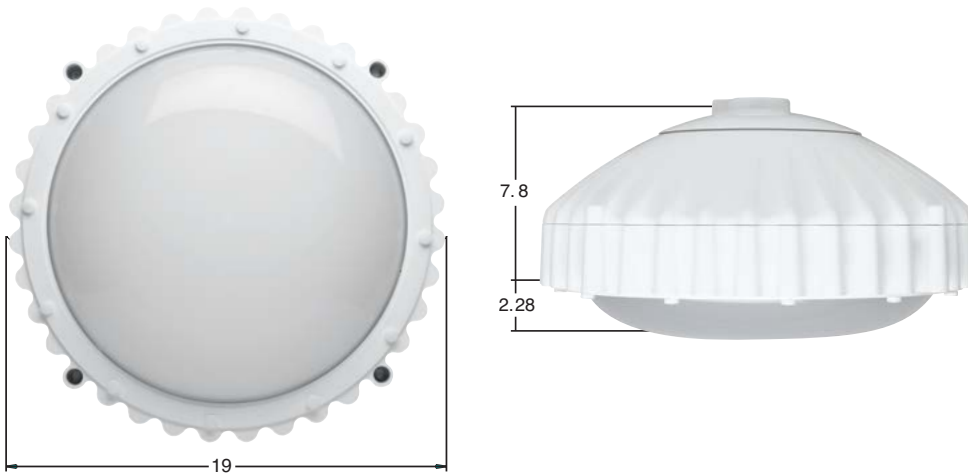


Maximum Candela = 7034 Located At Horizontal Angle = 0, Vertical Angle = 0

LENS OPTIONS



DIMENSIONS



PROJECTED LUMEN MAINTENANCE

	TM21	Estimated Life
L70	>60,000	206,000
L90	57,000	57,000

Due to our continued efforts to improve our products, specifications are subject to change without notice.
© 2018 Hubbell Lighting. All Rights Reserved.

For more information visit our web site: <http://www.hubbellindustrial.com/>
Phone: 1-864-878-1000

