

HBLH SERIES HAZARDOUS LED HIGH BAY



HUBBELL
Industrial Lighting

CAT.#	APPROVALS
JOB	TYPE

SPECIFICATIONS

Applications -

- Designed to efficiently light classified areas in heavy industrial settings and warehouses.

Construction -

- High performance LED design delivering up to 100 lumens per watt
- Specialized thermal management allows up to 55°C ambient temperature ratings
- LED count ranges from 72 to 60 to 48 and all three LED counts are driven at 700 mA
- Minimum operating temperature of -40°C
- Fixture weight: **29 lbs.** Shipped weight: **33 lbs.**

Optic System -

- Custom engineered LED optics
- Three distinct distributions: Aisle, Narrow and Wide

LED Light Engine -

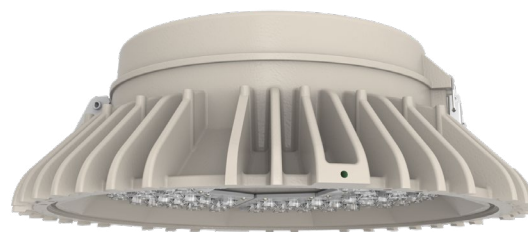
- High output LEDs
- 60,000 hours, long life @ L70
- 2700-5000°K Color temperature - See ordering logic for details
- 68 CRI

LED Driver -

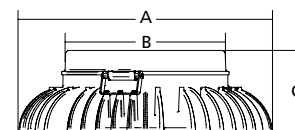
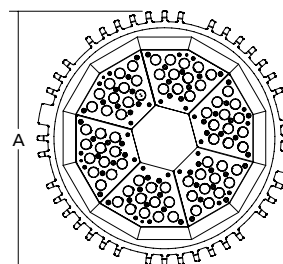
- Circuit Loading Information:
- 1.50 amps @ 120v 60 Hz
- 0.75 amps @ 240v 60 Hz
- 0.65 amps @ 277v 60 Hz
- Power factor greater than 0.90
- Standard 0 to 10v dimmable drivers
- FCC 47CFR Part 15 Class B Compliant

Thermal Performance -

- 48 LED units @ -40°C TO 55°C
- 60 LED units @ -40°C TO 50°C
- 72 LED units @ -40°C TO 45°C



DIMENSIONS



HBLH	A	B	C
	18"	11"	6"

Certifications -

- CSA Listed to UL844
- CSA Listed to UL1598 Wet Location
- UL Sanitation Certified per NSF Standards
- Class I, Division 2, Groups A, B, C & D
- IP66 with factory installed ENCG option

Warranty -

- Five years from date of purchase



ORDERING INFORMATION

ORDERING EXAMPLE: **HBLH-72L-U-A-2-5K-N-070-TN**

HBLH	-		-	U	-		-		-		-	070	-		-	TN	-		
Series		# of LEDs		Voltage		Mount		Hub		Color Temp		Distribution		Drive Current		Dimming		Colors	Options

SERIES

HBLH LED High Bay Series

NUMBER OF LEDs

48L	48 High Performance LEDs
60L	60 High Performance LEDs
72L	72 High Performance LEDs

VOLTAGE

U 120 - 277

MOUNT

A	Pendant
C	Cone
S	Straight Stanchion
X	Ceiling
Y	Yoke

HUB

2	3/4" Hub
Available with A, C, X & Y Mounts	
3	1"
Available with A, C & X Mounts	
4	1 1/4"
5	1 1/2"
Available with S Mounts	

COLOR TEMPERATURE

27K	2700° K
3K	3000° K
35K	3500° K
4K	4000° K
5K	5000° K

NOTE: See color temperature de-rating factors table on pg.2

DISTRIBUTION

N	Narrow
W	Wide
A	Aisle

DRIVE CURRENT

070 700MA

DIMMING

CD	Continuous Dimming
ND	Non-Dimming

COLORS

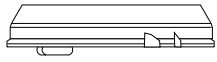
TN Tan

OPTIONS

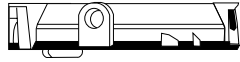
ENCA	Acrylic Protective Lens
ENCG	Glass Protective Lens
WG	Bottom Wire Guard
SL	Sag Lens, Clear
TLRX	Top Luminaire Retainer
ENCSL	Translucent Sag Polycarbonate Lens

HBLH SERIES - HAZARDOUS LED HIGH BAY

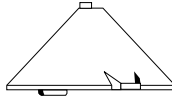
Mounting Options



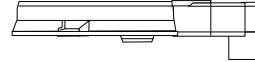
Pendant



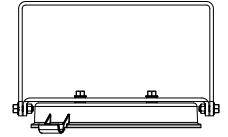
Ceiling



Cone



Straight Stanchion



Yoke

LED SYSTEM INFORMATION

CATALOG NUMBER	INPUT WATTS	LEDS	COLOR TEMPERATURE	CRI	TOTAL LUMENS	LUMENS PER WATT	AMBIENT TEMPERATURE	CLASS I DIV 2
HBLH-48LU-5K-N-070-TN	112	48	5000°K	68	11206	100	55° C	T5
HBLH-48LU-5K-W-070-TN	112	48	5000°K	68	10778	96	55° C	T5
HBLH-48LU-5K-A-070-TN	112	48	5000°K	68	10213	91	55° C	T5
HBLH-60LU-5K-N-070-TN	139	60	5000°K	68	14007	101	50° C	T5
HBLH-60LU-5K-W-070-TN	139	60	5000°K	68	13472	97	50° C	T5
HBLH-60LU-5K-A-070-TN	139	60	5000°K	68	12776	92	50° C	T5
HBLH-72LU-5K-N-070-TN	169	72	5000°K	68	16808	99	45° C	T5
HBLH-72LU-5K-W-070-TN	169	72	5000°K	68	16166	96	45° C	T5
HBLH-72LU-5K-A-070-TN	169	72	5000°K	68	15319	91	45° C	T5

COLOR TEMPERATURE DE-RATING FACTORS

NUMBER OF LEDES	5000K	CRI	4000K	CRI	3500K	CRI	3000K	CRI	2700K	CRI
48	1.00	68	0.74	80	0.77	80	0.74	80	0.72	80
60										
72										

PHOTOMETRIC REPORT

REPORT NUMBER: HBL72LU5KN070

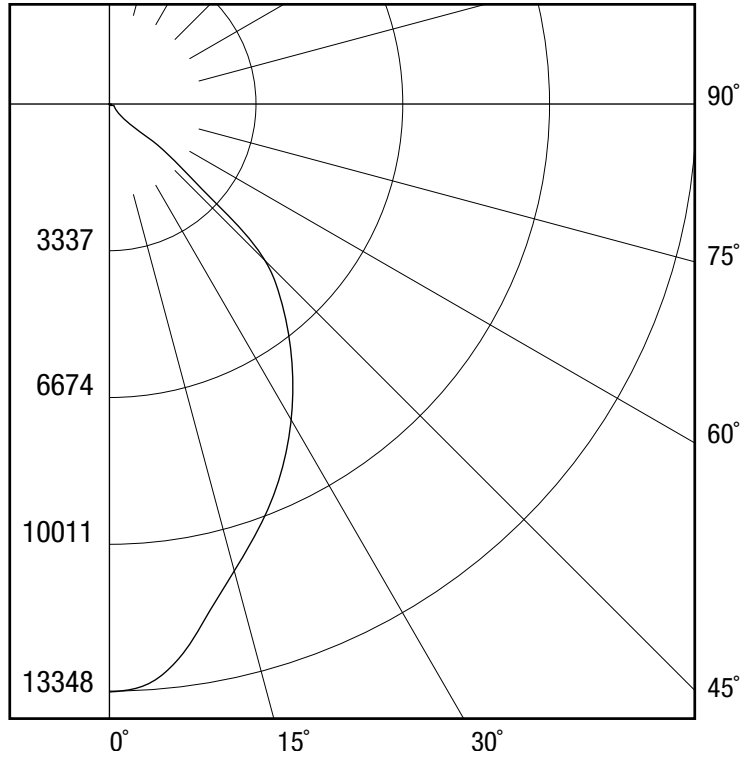
ISSUE DATE: 04/03/12

ZONAL LUMEN SUMMARY

ZONE	LUMENS	%FIXT
0-30	8502.49	50.50
0-40	12880.45	76.50
0-60	16619.62	98.70
0-90	16841.06	100.00
0-180	16844.05	100.00

SPACING CRITERION

1.0



PHOTOMETRIC REPORT

REPORT NUMBER: HBL72LU5KW070

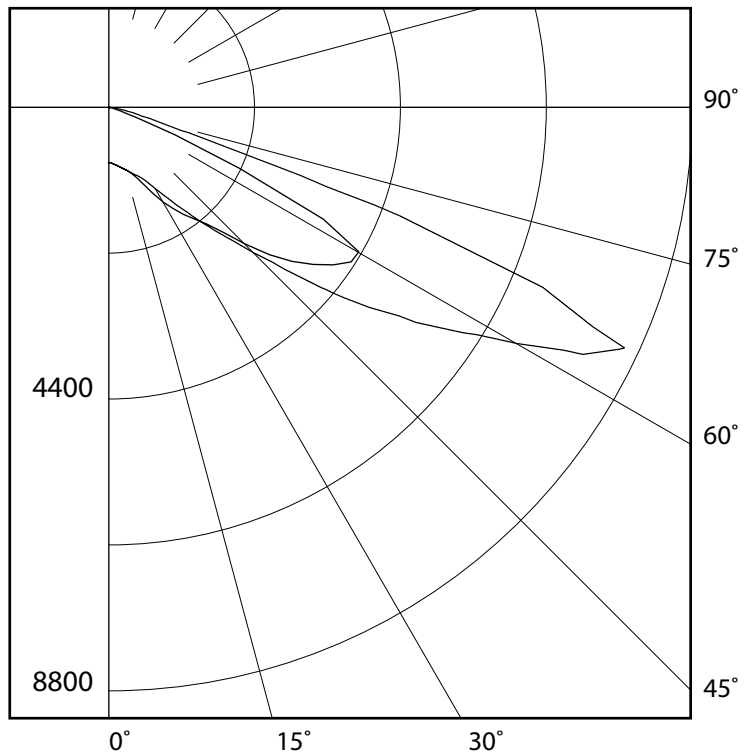
ISSUE DATE: 02/21/12

ZONAL LUMEN SUMMARY

ZONE	LUMENS	% FIXT
0-30	963	7.2
0-40	2206	16.4
0-60	9021	67.0
0-90	13467	100.0
0-180	13467	100.0

SPACING CRITERION

3.7



Due to our continued efforts to improve our products, specifications are subject to change without notice. Copyright © 2019 Hubbell Lighting All Rights Reserved.

For more information visit our web site: <http://www.hubbellindustrial.com/>
Phone: 1-864-678-1000