



PHB SERIES

THE PERFORMANCE HIGH BAY



CAT.#	APPROVALS
JOB	TYPE
<p>SPECIFICATIONS</p> <p>Applications - The Performance High Bay is the new standard for industrial lighting. A well sealed die cast housing coupled with a choice of four optics results in a durable, rugged high bay for those tough industrial applications.</p> <p>Construction -</p> <ul style="list-style-type: none"> • Three piece low copper alloy die cast aluminum housing • Easy one person installation on threaded conduit (¾" or 1") • 60,000 hour LEDs at L80 (up to 86,000 projected life) for reduced maintenance • Projected LED life at L70 is up to 233,000 hours • Lifetime hours based on TM21-11 calculations • Ambient temperature range is from -40°C to 65°C • Weight: 30 lbs. <p>Performance -</p> <ul style="list-style-type: none"> • Up to 28,000 lumens • 141 LPW (lumens/watt) <p>Shielding (Five Lens Options) -</p> <ul style="list-style-type: none"> • High transmissive flat acrylic • Translucent sag polycarbonate • Prismatic drop acrylic lens • Conical drop acrylic lens • Flat clear glass lens <p>Electrical -</p> <ul style="list-style-type: none"> • Total input wattage of 216W, 156W or 103W • Replacement for 400W PSMH / 250W PSMH or 175W PSMH • Standard unit is continuously dimmable (0-10V control) • Mid power LEDs for high LPW and low glare • Universal voltage of 120VAC - 277VAC/50/60 Hz • 347 VAC / 480 VAC 50/60 Hz (Not available on ML - 16,000 Lumen versions) <p>Certification -</p> <ul style="list-style-type: none"> • Built to UL 1598 standard and certified by CSA 	 <p>• Wet Location Listed</p> <p>• IP66 Rated</p> <p>• DLC® (DesignLights Consortium) Qualified, with some Premium Qualified configurations - see www.designlights.org</p> <p>Warranty -</p> <ul style="list-style-type: none"> • Five years warranty (Terms and Conditions apply) 

ORDERING INFORMATION

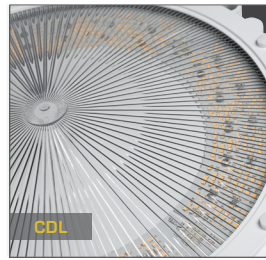
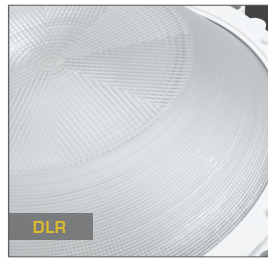
ORDERING EXAMPLE: PHB-5K-LV-P95-U-A-2-WH-SP

PHB	-		-		-		-		-		-		-	
Series		CCT		Lumen Levels		Optic		Voltage		Mounting		Hub		Color
														Options
SERIES	SPC Sag Polycarbonate		VOLTAGE		HUB		OPTIONS							
PHB	The Performance High Bay		P95 Acrylic P95		U Universal		B Wall Bracket		C(y)HLP(x) Cord & 20 Amp Plug					
CCT			FGL Flat Glass Lens		1 120		C Cone		15A Plug 15 Amp Plug Option					
3K	3000K, 80 CRI				2 208		D Stanchion 25°		F(x) Fusing					
4K	4000K, 80 CRI				3 240		N None		SP 10kV Surge Protector (3kV standard)					
5K	5000K, 80 CRI				4 277		HUB		OCS-360 Occupancy PIR Sensor with 360 lens					
LUMEN LEVELS					5 480 ¹		2 ¾" (Mounts A, B and C)		OCS-A Occupancy PIR Sensor with Aisle lens					
LV	14,000 lumens				¹ Not available with ML lumen package		3 1" (Mounts A, B and C)		OCM Occupancy Microwave Sensor					
ML	20,000 lumens						4 1 ¼" (Mount D only)		Notes: Replace (X) with the voltage, 1=120V, 2=208V, 3=240V, 4=277V, F=347V and 5=480V					
MM	28,000 lumens						5 1 ½" (Mount D only)		Replace (y) with the length. 4=4ft., 6=6ft., 8=8ft., 10=10ft., 12=12ft.					
OPTIC							COLOR							
CDL	Prismatic Conical Drop Acrylic						WH White							
DLR	Prismatic Drop Acrylic						GR Gray							
							TN Tan							

LENS OPTIONS

	LPW	SC	MATERIAL	SHAPE	FEATURE
P95	141	1.22	Clear Acrylic	Flat with a slight haze	Highest LPW
CDL	134	1.11	Clear Acrylic	Conical Ribs	Low Profile
DLR	133	1.28	Clear Acrylic	Dropped Refractor	Good Glare control, widest distribution
SPC	131	1.22	Milk White Acrylic	Smooth Sag Lens	Best glare control

LENS OPTIONS



ELECTRICAL DATA

CCT	LUMENS	LENS	CATALOG STRING	LUMEN OUTPUT	WATTS	LUMINAIRE EFFICACY	AMBIENT TEMP. RATING	SPACING RATIO						
									120V	208V	240V	277V	347V	480V
3K	LV	CDL	PHB-3K-LV-CDL-U-XX-XX	12785	103	124	65°C	1.1	0.87	0.5	0.43	0.38	0.3	0.22
		DLR	PHB-3K-LV-DLR-U-XX-XX	12713		123		1.3						
		SPC	PHB-3K-LV-SPC-U-XX-XX	12538		122		1.2						
		FGL	PHB-3K-LV-FGL-U-XX-XX	14166		137		1.2						
		P95	PHB-3K-LV-P95-U-XX-XX	13518		131		1.2						
	ML	CDL	PHB-3K-ML-CDL-U-XX-XX	18695	156	126	65°C	1.1	1.33	0.76	0.66	0.51	-	-
		DLR	PHB-3K-ML-DLR-U-XX-XX	17811		120		1.3						
		SPC	PHB-3K-ML-SPC-U-XX-XX	18179		122		1.2						
		FGL	PHB-3K-ML-FGL-U-XX-XX	20478		130		1.2						
		P95	PHB-3K-ML-P95-U-XX-XX	19604		132		1.2						
	MM	CDL	PHB-3K-MM-CDL-U-XX-XX	24492	216	113	60°C	1.1	1.85	1.05	0.91	0.79	0.63	0.47
		DLR	PHB-3K-MM-DLR-U-XX-XX	24129		112		1.3						
		SPC	PHB-3K-MM-SPC-U-XX-XX	23855		110		1.2						
		FGL	PHB-3K-MM-FGL-U-XX-XX	26609		122		1.2						
		P95	PHB-3K-MM-P95-U-XX-XX	25736		119		1.2						
4K	LV	CDL	PHB-4K-LV-CDL-U-XX-XX	13416	103	130	65°C	1.1	0.87	0.5	0.43	0.38	0.3	0.22
		DLR	PHB-4K-LV-DLR-U-XX-XX	13340		130		1.3						
		SPC	PHB-4K-LV-SPC-U-XX-XX	13156		128		1.2						
		FGL	PHB-4K-LV-FGL-U-XX-XX	14865		143		1.2						
		P95	PHB-4K-LV-P95-U-XX-XX	14185		138		1.2						
	ML	CDL	PHB-4K-ML-CDL-U-XX-XX	19617	156	126	65°C	1.1	1.33	0.76	0.66	0.51	-	-
		DLR	PHB-4K-ML-DLR-U-XX-XX	18689		120		1.3						
		SPC	PHB-4K-ML-SPC-U-XX-XX	19076		122		1.2						
		FGL	PHB-4K-ML-FGL-U-XX-XX	21488		137		1.2						
		P95	PHB-4K-ML-P95-U-XX-XX	20571		132		1.2						
	MM	CDL	PHB-4K-MM-CDL-U-XX-XX	25700	216	119	60°C	1.1	1.85	1.05	0.91	0.79	0.63	0.47
		DLR	PHB-4K-MM-DLR-U-XX-XX	25319		117		1.3						
		SPC	PHB-4K-MM-SPC-U-XX-XX	25031		116		1.2						
		FGL	PHB-4K-MM-FGL-U-XX-XX	27648		128		1.2						
		P95	PHB-4K-MM-P95-U-XX-XX	27005		125		1.2						
5K	LV	CDL	PHB-5K-LV-CDL-U-XX-XX	13778	103	134	65°C	1.1	0.87	0.5	0.43	0.38	0.3	0.22
		DLR	PHB-5K-LV-DLR-U-XX-XX	13700		133		1.3						
		SPC	PHB-5K-LV-SPC-U-XX-XX	13511		131		1.2						
		FGL	PHB-5K-LV-FGL-U-XX-XX	15266		147		1.2						
		P95	PHB-5K-LV-P95-U-XX-XX	14568		141		1.2						
	ML	CDL	PHB-5K-ML-CDL-U-XX-XX	20147	156	126	65°C	1.1	1.33	0.76	0.66	0.51	-	-
		DLR	PHB-5K-ML-DLR-U-XX-XX	19194		120		1.3						
		SPC	PHB-5K-ML-SPC-U-XX-XX	19591		122		1.2						
		FGL	PHB-5K-ML-FGL-U-XX-XX	22068		137		1.2						
		P95	PHB-5K-ML-P95-U-XX-XX	21126		132		1.2						
	MM	CDL	PHB-5K-MM-CDL-U-XX-XX	26394	216	122	60°C	1.1	1.85	1.05	0.91	0.79	0.63	0.47
		DLR	PHB-5K-MM-DLR-U-XX-XX	26003		120		1.3						
		SPC	PHB-5K-MM-SPC-U-XX-XX	25707		119		1.2						
		FGL	PHB-5K-MM-FGL-U-XX-XX	27921		128		1.2						
		P95	PHB-5K-MM-P95-U-XX-XX	27734		128		1.2						

PHOTOMETRIC DATA: IES_PHB_4K_MM_P95 | 17.00393

LUMINAIRE DATA

PHB-4K-MM-P95

Luminaire - The Performance High Bay with P95 Acrylic Flat Lens

DRIVER LEDINTA0024V41DLO

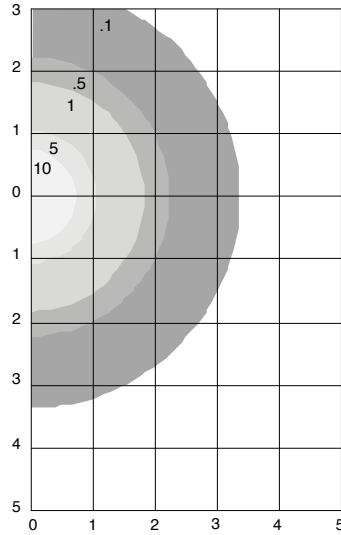
Driver Factor	1.00
Lamp	LED
Lumens	27,005
Watts	215.8
Efficacy	125.1
Mounting	Pendant
Spacing Criterion (0-180)	1.23

LUMINOUS OPENING IN FEET

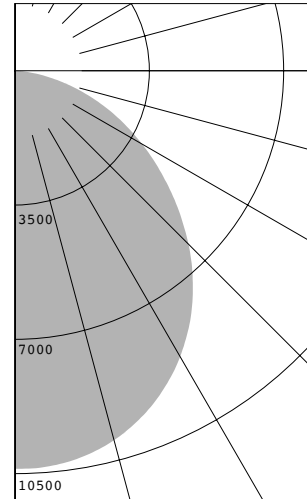
Length	1.50 ft. (Diameter)
Width	1.25 ft. (Diameter)

ZONE	LUMENS	% FIXT.
0-30	8,011	29.7
0-40	12,978	48.1
0-60	22,073	81.7
0-90	27,004	100.0b
0-180	27,005	100.0

ISOMETRIC FOOT CANDLES



POLAR GRAPH



PHOTOMETRIC DATA: IES_PHB_4K_LV_P95 | 17.00411

LUMINAIRE DATA

PHB-4K-LV-P95

Luminaire - The Performance High Bay with SPC sag polycarbonate lens

DRIVER LEDINTA0024V41DLO

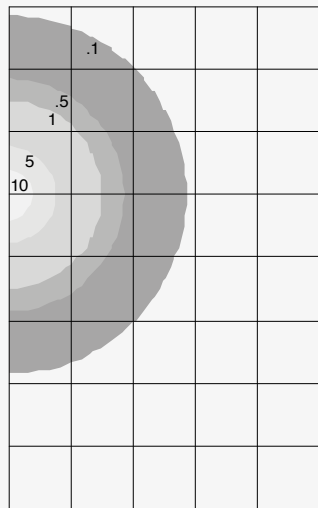
Driver Factor	1.00
Lamp	LED
Lumens	14,185
Watts	103.0
Efficacy	137.7
Mounting	Pendant
Spacing Criterion (0-180)	1.23

LUMINOUS OPENING IN FEET

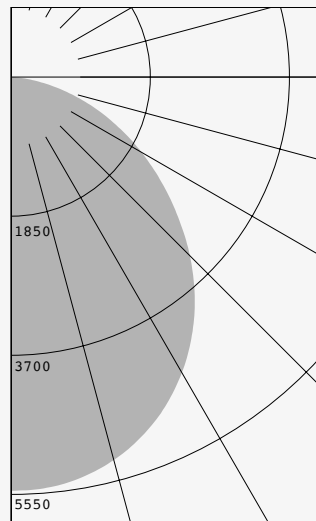
Length	1.50 ft. (Diameter)
Width	1.25 ft. (Diameter)

ZONE	LUMENS	% FIXT.
0-30	4,235	29.9
0-40	6,853	48.3
0-60	11,630	82.0
0-90	14,185	100.0
0-180	14,185	100.0

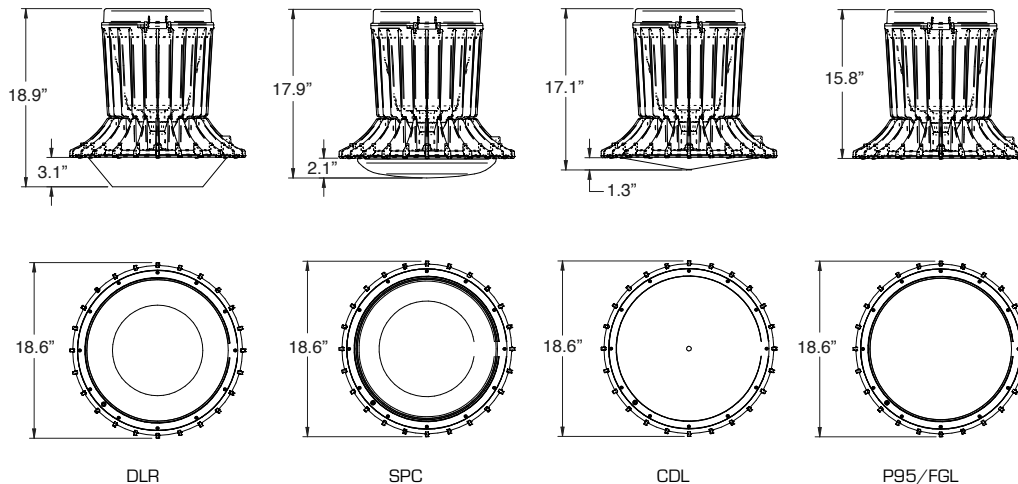
ISOMETRIC FOOT CANDLES



POLAR GRAPH



DIMENSIONS



Due to our continued efforts to improve our products, specifications are subject to change without notice. Copyright © 2019 Hubbell Lighting. All Rights Reserved.

For more information visit our web site: <http://www.hubbellindustrial.com/>
Phone: 1-864-678-1000