

BOLR/BOLS LED RETROFIT KIT

Cat.#

Job

Type



HUBBELL
Lighting

Approvals

INTENDED USE

- LED retrofit kit to replace HID or CFL components for Fresno, Modesto or Tempe bollards

CONSTRUCTION

- Easy installation process, retrofit existing HID or CFL systems in 10 minutes or less
- Features 12 or 24 high brightness energy-efficient LEDs for asymmetric or symmetric distribution
- Available in 5000K, 4000K, 3000K white or 560nm monochromatic amber

ELECTRICAL

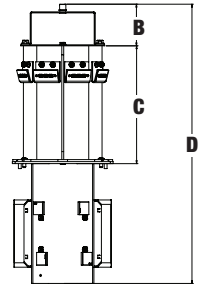
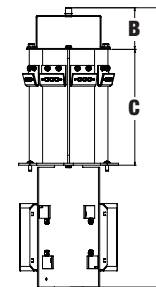
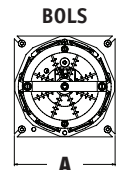
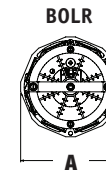
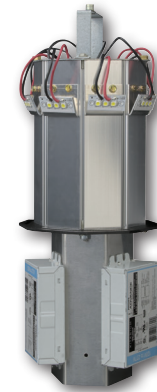
- Universal voltage (120-277V) drivers with +/- 10% tolerance, starting temperature rated at -20°F
- Optional continuous dimming to 10% (0-10V)
- 12 LED light engine delivers an asymmetric distribution at 27w
- 24 LED light engine delivers a symmetric distribution at 41w
- 560nm Amber LED light engine delivers an symmetric distribution at 20w
- System rating is 50,000 hours L70 at 25° C

LISTINGS

- Listed to UL1598 for use in wet locations

WARRANTY

- 5 year limited system warranty



	A	B	C	D	Weight
BOLR	6.25" sq.	2.61"	7.25"	17.48"	5.35 lbs
	158 mm	66 mm	184 mm	444 mm	2.43 kg
BOLS	6.31" dia	2.61"	7.38"	17.48"	5.35 lbs
	160 mm	66 mm	187 mm	444 mm	2.43 kg



ORDERING INFORMATION

ORDERING EXAMPLE: BOLR-24LU-AMB-CD

SERIES	LED	VOLTAGE	OPTIONS ¹	ACCESSORIES
BOLR LED Retro-Kit Round	12LU-3K asymmetric, 31W, 3000K CCT	U 120V-277V	CD 0-10V dimmable	BOLR-LENS² Round replacement lens
BOLS LED Retro-Kit Square	12LU-4K asymmetric, 31W, 4000K CCT	1 120	F1 Fusing - 120V	BOLS-LENS² Square replacement lens
	12LU-5K asymmetric, 31W, 5000K CCT	2 277	F2 Fusing - 206V	
	24LU-3K symmetric, 46W, 3000K CCT	3 240	F3 Fusing - 240V	
	24LU-4K symmetric, 46W, 4000K CCT	4 277	F4 Fusing - 277V	
	24LU-5K symmetric, 46W, 5000K CCT	5 480		
	24LU-AM symmetric, 20W, Amber 590nm	F 347		

¹ CD dimming option may be selected with any of the fusing options
² Required for Modesto Bollard

Due to our continued efforts to improve our products, product specifications are subject to change without notice.



Spaulding Lighting • 701 Millennium Boulevard • Greenville, SC 29607 • Phone: 864-678-1000
 Due to our continued efforts to improve our products, product specifications are subject to change without notice.
 © 2015 SPAULDING LIGHTING, All Rights Reserved • For more information visit our website: www.spauldinglighting.com • Printed in USA LEDRETRO-SPEC 3/17

