

**Type:**  
**Job:**  
**Catalog number:**

**Approvals:**

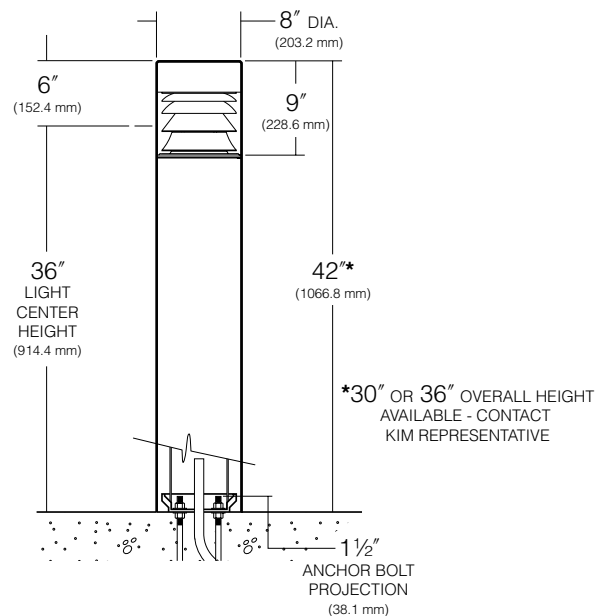
|            |                   |                          |         |
|------------|-------------------|--------------------------|---------|
| <b>B30</b> | /                 | /                        | /       |
| Fixture    | Electrical Module | Top Cap and Shaft Finish | Options |
| See page 2 |                   | See page 3               |         |

**Date:**  
**Page: 1 of 4**

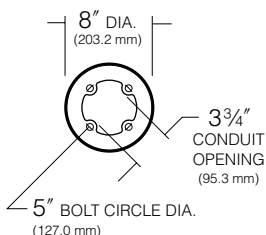
## Specifications

### B30 LED

Maximum weight: 30 lb.



### BASE PLAN B30



**Top Cap:** One-piece heavy gauge spun aluminum retained by two countersunk captive socket head fasteners, braced at outer edges by optical assembly. 3/4" thick insulation provided above lamp.

**Plastic Enclosure:** High grade, high temperature acrylic, optically clear, 1/4" nominal wall, one-piece injection molded retained in an unstressed position by internal support through reflector assembly.

**Optical Assembly:** Precision hydroformed optical louvers with specular Alzak® finish, removable as a one-piece self-contained unit.

**Shaft:** One-piece, extruded, wall thickness, .125" with heavy cast aluminum twist-lock anchor base concealed within post. Post locks to base with (2) 3/8" stainless steel cone point set screws.

**Gasketing:** Fixture is silicone gasketed for weathertight operation.

**Electronic Module:** All electrical components are either UL or ETL recognized, mounted on a single plate and factory prewired with quick disconnect plugs. Driver is rated for -40°F starting and has a 0-10V dimming interface for multi-level illumination options.

**Optical Module:** Each LED equipped with a directional optic for maximum beam angle projecting through louver stack spacings. LED boards to be mounted to an anodized inter-locking heat sink extrusion. 20-LED total. Available in 580nm Amber, 3000K, 4200K and 5100K color temperatures.

**Anchor Bolts:** Four 3/8" x 10" + 2" zinc electro-plated L-hook anchor bolts, each with two nuts and washers and a rigid pressboard template.

**Finish:** Each luminaire receives a fade and abrasion resistant, electrostatically applied, thermally cured, triglycidal isocyanurate (TGIC) polyester powdercoat finish. Standard colors include (BL) Black, (DB) Dark Bronze, (WH) White, (PS) Platinum Silver, (SG) Stealth Gray, (LG) Light Gray, and (CC) Custom Color (Include RAL#).

**Listed to:** UL 1598 Standard for Luminaires - UL 8750 Standard for Safety for Light Emitting Diode (LED) Equipment for use in Lighting Products and CSA C22.2#250.0 Luminaires. RoHS compliant. Meets Buy American provisions within ARRA.

**Warranty:** Kim Lighting warrants Bollard LED products sold by Kim Lighting to be free from defects in material and workmanship for (i) a period of five (5) years for metal parts, (ii) a period of five (5) years for exterior housing paint finish(s), (iii) a period of five (5) years for LED Light Engines and, (iv) a period of five (5) years for LED power components (driver, surge protector and LifeShield® device), from the date of sale of such goods to the buyer as specified in Kim Lighting shipment documents for each product.

**CAUTION:** Fixtures must be grounded in accordance with national, state and/or local electrical codes. Failure to do so may result in serious personal injury.



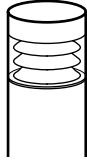
HUBBELL LIGHTING, INC.

KIM LIGHTING RESERVES THE RIGHT TO CHANGE SPECIFICATIONS WITHOUT NOTICE

Type:

Job:

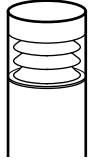
Page: 2 of 4



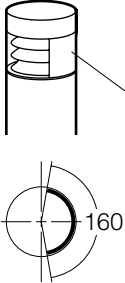
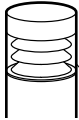
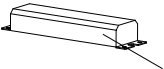
## Standard Features

|   |   |   |  |   |
|---|---|---|--|---|
| <b>Fixture</b>  | Cat. No. <b>B30</b> High Performance Bollard, 8" Round  |   |  |   |
| <b>Electrical Module</b><br>LED = Light Emitting Diode  | Cat. Nos. for LED Electrical Modules available: <table style="width: 100%; border: none;"> <tr> <td style="text-align: center; border: none;"> <b>xL</b><br/> <b>Source:</b><br/> <input type="checkbox"/> <b>10L</b>= 10 LED<br/>                     (IES Type I)<br/> <input type="checkbox"/> <b>15L</b>= 15 LED<br/>                     (IES Type III)<br/> <input type="checkbox"/> <b>20L</b>= 20 LED<br/>                     (IES Type V)                 </td> <td style="text-align: center; border: none;"> <b>xK</b><br/> <b>Color Temperature:</b><br/> <input type="checkbox"/> 2K = 580nm - Amber<br/> <input type="checkbox"/> 3K = 3000K<br/> <input type="checkbox"/> 4K = 4200K<br/> <input type="checkbox"/> 5K = 5100K                 </td> <td style="text-align: center; border: none;"> <b>UV</b><br/> <b>Voltage:</b><br/> <input type="checkbox"/> <b>UV</b> Universal Voltage<br/>                     shall range from<br/>                     120V-277V                 </td> </tr> </table> | <b>xL</b><br><b>Source:</b><br><input type="checkbox"/> <b>10L</b> = 10 LED<br>(IES Type I)<br><input type="checkbox"/> <b>15L</b> = 15 LED<br>(IES Type III)<br><input type="checkbox"/> <b>20L</b> = 20 LED<br>(IES Type V) | <b>xK</b><br><b>Color Temperature:</b><br><input type="checkbox"/> 2K = 580nm - Amber<br><input type="checkbox"/> 3K = 3000K<br><input type="checkbox"/> 4K = 4200K<br><input type="checkbox"/> 5K = 5100K | <b>UV</b><br><b>Voltage:</b><br><input type="checkbox"/> <b>UV</b> Universal Voltage<br>shall range from<br>120V-277V |
| <b>xL</b><br><b>Source:</b><br><input type="checkbox"/> <b>10L</b> = 10 LED<br>(IES Type I)<br><input type="checkbox"/> <b>15L</b> = 15 LED<br>(IES Type III)<br><input type="checkbox"/> <b>20L</b> = 20 LED<br>(IES Type V) | <b>xK</b><br><b>Color Temperature:</b><br><input type="checkbox"/> 2K = 580nm - Amber<br><input type="checkbox"/> 3K = 3000K<br><input type="checkbox"/> 4K = 4200K<br><input type="checkbox"/> 5K = 5100K  | <b>UV</b><br><b>Voltage:</b><br><input type="checkbox"/> <b>UV</b> Universal Voltage<br>shall range from<br>120V-277V   |  |   |
| <b>Luminaire Finish</b><br>TGIC powder coat paint on fixture and shaft.   | Color: Black Dark Bronze Light Gray Stealth Gray Platinum Silver White Custom Color<br>Cat. No.: <input type="checkbox"/> <b>BL</b> <input type="checkbox"/> <b>DB</b> <input type="checkbox"/> <b>LG</b> <input type="checkbox"/> <b>SG</b> <input type="checkbox"/> <b>PS</b> <input type="checkbox"/> <b>WH</b> <input type="checkbox"/> <b>CC</b><br>*Custom colors subject to additional charges, minimum quantities and extended lead times. Consult representative. Custom color description: _____  |   |  |   |
| <b>0-10V Dimming Interface</b>  | Driver has a 0-10V dimming interface with a dimming range of 10-100%. Is compatible with most control systems including Hubbell Building Automation wiHUBB™. Approved dimmers include Lutron Diva AVTV, Lutron Nova NFTV and NTFTV. Note: Not compatible with current sourcing dimmers. Controls compatible via Gray and Purple dimming lead. <div style="float: right; text-align: right;"> </div>   |   |  |   |

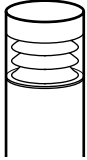
Type:  
 Job:



## Optional Features

|  |   |   |
|--|---|---|
| <p><b>Houseside Shield</b><br/>                 Cat. No. <input type="checkbox"/> <b>HS</b><br/> <input type="checkbox"/> <b>No Option</b></p>   | <p>Eliminates backlight in unwanted areas such as adjacent property, or wherever an asymmetric light distribution is desired. Constructed of sheet aluminum covering a 160° arc. Finished to match the fixture. Shield is fully adjustable about a 360° rotation. Consult Kim representative.</p>   |  <p>Houseside Shield</p>     |
| <p><b>Polycarbonate Enclosure</b><br/>                 Cat. No. <input type="checkbox"/> <b>LC</b><br/> <input type="checkbox"/> <b>No Option</b></p>  | <p>Clear Polycarbonate<br/> <b>CAUTION:</b> Use only when vandalism is anticipated to be high. Useful life is limited due to yellowing caused by UV from sunlight.</p>  |  <p>Clear Polycarbonate</p> |
| <p><b>Battery Back-up</b><br/>                 Cat. No. <input type="checkbox"/> <b>EM</b><br/> <input type="checkbox"/> <b>No Option</b></p>  | <p>Internal battery pack provides 90 minutes of supplemental light at 50% of initial lamp lumens.</p>   |  <p>Battery Back-up</p>    |
| <p><b>Optional Duplex Receptacle</b><br/>                 Cat. No. <input type="checkbox"/> <b>DR</b><br/> <input type="checkbox"/> <b>DR-GFI</b><br/> <input type="checkbox"/> <b>No Option</b></p> | <p>Mounted 18" from bottom of shaft, in a cast aluminum box that is internally welded and sealed with a gasketed While-In-Use cover with locking tab. Painted to match bollard.<br/> <b>DR</b> weather proof duplex receptacle rated 20A, 125V.<br/> <b>DR-GFI</b> weather proof duplex receptacle with ground fault circuit interrupter rated 20A, 125V.</p> |   |

Type:  
 Job:



**Lumen Data**

| Electrical Drive Current - @350mA |           |              |           |              |           |              |
|-----------------------------------|-----------|--------------|-----------|--------------|-----------|--------------|
|                                   | Type 1    |              | Type 3    |              | Type 5    |              |
| Volts - AC                        | Amps - AC | System Watts | Amps - AC | System Watts | Amps - AC | System Watts |
| 120                               | 0.11      | 13           | 0.16      | 19           | 0.21      | 25           |
| 208                               | 0.06      | 13           | 0.09      | 19           | 0.12      | 25           |
| 240                               | 0.05      | 13           | 0.08      | 19           | 0.10      | 25           |
| 277                               | 0.05      | 13           | 0.07      | 19           | 0.09      | 25           |

| B.U.G. Rating (TM15) in Lumens where B = Backlight, U = Uplight, G = Glare |          |          |          |
|--|----------|----------|----------|
| Temperature  | TYPE 1   | TYPE 3   | TYPE 5   |
| 3000K  | B0 U2 G1 | B0 U2 G1 | B1 U2 G1 |
| 4200K  | B0 U2 G1 | B0 U2 G1 | B1 U2 G1 |
| 5100K  | B0 U2 G1 | B0 U2 G1 | B1 U3 G1 |

| Absolute Lumens |        |        |        |
|-----------------|--------|--------|--------|
| Temperature     | TYPE 1 | TYPE 3 | TYPE 5 |
| 3000K           | 495    | 727    | 1017   |
| 4200K           | 508    | 746    | 1043   |
| 5100K           | 514    | 755    | 1055   |

LED performance and lumen output continues to improve at a rapid pace. Log onto [www.kimlighting.com](http://www.kimlighting.com) to download the most current photometric files from Kim Lighting's IES File Library. For custom optics and color temperature configurations, contact factory.