



# CH-031-C

## EXTRUDED ALUMINUM MOUNTING CHANNEL

Fixture Type: \_\_\_\_\_

Project: \_\_\_\_\_

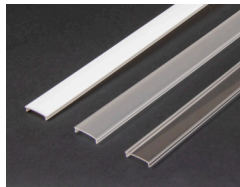
Location: \_\_\_\_\_

### PRODUCT FEATURES

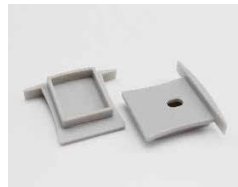
- Available in 2 Meter Sections
- Extruded Aluminum Construction
- Anodized Matte Finish
- Consult Factory for Custom Lengths and Finishes

### SPECIFICATIONS

Model	CH-031-C
Length	78.74" (2m)
External Width	1.438" (36mm)
Internal Width	0.75" (18.6mm)
Height	1.125" (28mm)



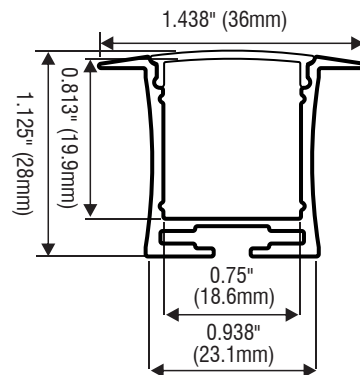
White Lens (WH)  
Frost Lens (FR)  
Clear Lens (CL)



End Cap With Hole  
End Cap Without Hole



Spring Clips (SG)



### ORDERING INFORMATION

Example: **CH031C-1-FR-SG-EC**

