



CH-228-N

EXTRUDED ALUMINUM MOUNTING CHANNEL

Fixture Type: _____

Project: _____

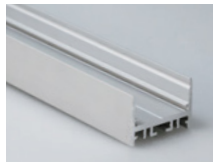
Location: _____

PRODUCT FEATURES

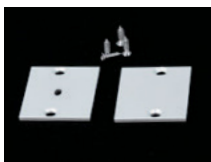
- Available in 2 meter sections
- Extruded aluminum construction
- Anodized matte finish
- Consult factory for custom lengths & finishes

SPECIFICATIONS

Model	CH-228-N
Length	78.74" (2m)
External Width	1.375" (35mm)
Internal Width	1.25" (31.2mm)
Overall Height	1" (25.4mm)



Aluminum Profile



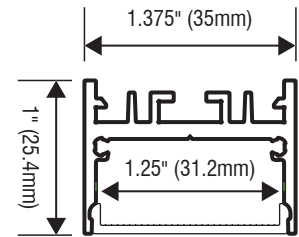
End Caps (EC)



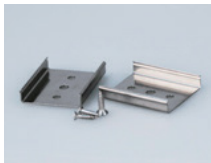
White Lens (WH)



Frosted Lens (FR)



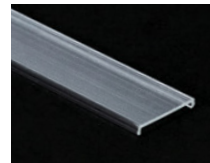
Suspension Cable (SP)



Metal Mounting Clips (MT)



90°, 120° & 180° Connectors



Clear Lens (CL)



Applications

ORDERING INFORMATION

Example: **CH228N-2-WH-SP-EC**

