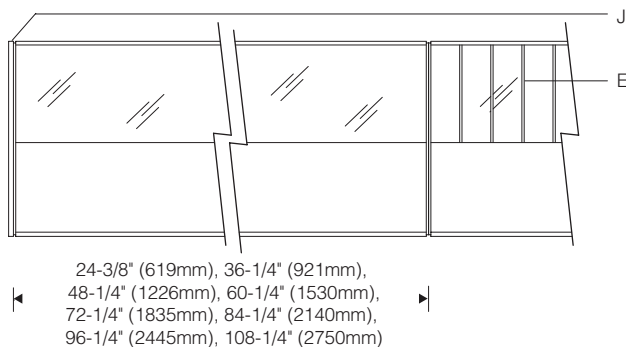
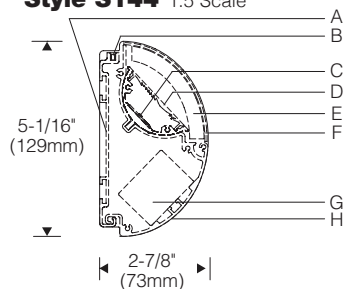
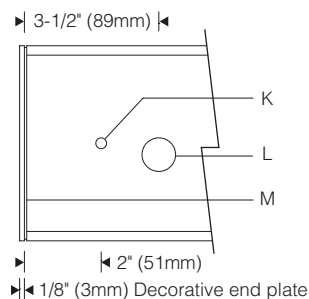


Style S144 1:5 Scale



Rear View (S Mount) 1:5 Scale

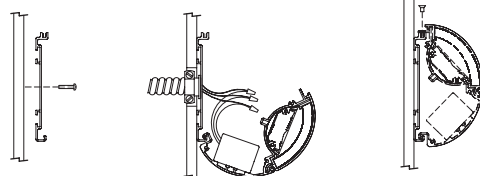


Installation (S mount)

Secure mounting plate to wall, fasteners by others

Hang housing, connect supply wiring

Hinge closed, secure with screws



Specifications

- | | | | |
|---|---|---|---|
| A Extruded aluminum mounting plate | D Extruded acrylic beam shaping lens | G High power factor constant current electronic driver | K Mounting hole 9/32" (7mm) diameter |
| B Closure screws | E Optional cross baffle (gray) | H Extruded aluminum housing | L Knockout 7/8" (22mm) diameter |
| C Serviceable light engine with mid-power LEDs | F Extruded acrylic hinging lens | J Aluminum decorative end plates (order separately) | M Aluminum reveal plate |

Finish:

Painted surfaces – 6 stage pretreatment and electrostatically applied thermoset powder coat for stable, long lasting and corrosion resistant finish. Extruded aluminum mounting plate, housing, aluminum reveal plates. Reflector and internal end plates. All luminaire hardware – stainless steel.

Optic Assembly:

Light engine – extruded aluminum heat sink with LED PCB. Multiple mid-power LEDs are tightly spaced to minimize pixelation. Light engines are removable for replacement or upgrade in one-foot increments. Precision extruded optical lens of high temperature, water-clear acrylic. Elliptical distribution holographic diffuser maximizes lateral distribution without disturbing asymmetric distribution.

Mounting:

S mount – mounting plate fastens flush to wall surface. Unit hinges on plate for hands-free access to wiring. Fixture weight: 2.7 lb/ft (4.0 kg/m).

Electrical:

Use 90°C wire for supply connections. Integral electronic HPF thermally protected Class 2 driver. For complete driver specifications, see website, reference document [MA-1303](#). Driver/wireway compartment includes one conduit entry at each end. Channel cover is removable for access to driver and wiring. Luminaires may be butted end-to-end (connectors by others) for through wiring. Optional #12 AWG prewired modular through-wiring with quick connectors. Optional, compatible dimming controls (by others). See website for dimming compatibility and specifications.

Standard:

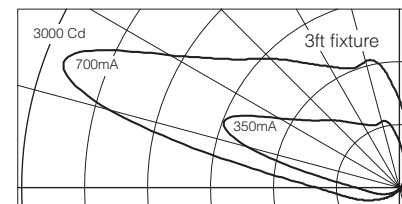
UL listed or CSA certified for dry location. For damp locations, specify **DL**, **DB**, **DK**, or **DC** option. 5 year warranty, maximum ambient temperature 45°C (113°F).

Features

- Inconspicuous low profile – lights ceiling evenly without emphasizing surface imperfections (unlike slot grazers)
- Compact size with integral driver
- Asymmetric distribution — evenly lights ceilings
- Light engines are serviceable in one foot increments

Performance

Precisely extruded acrylic lens produces an asymmetric distribution ideal for illuminating ceilings evenly from top to bottom.



L90(10k) > 60,000 hrs. @ 25°C per TM-21

For LM79 and photometric reports, visit thelightingquotient.com

