

Quickship Order Form 20 Mini Edgeless Cove

Project Name _____

Fixture Type _____

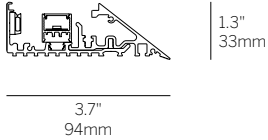
PO# _____



Ordering Instructions

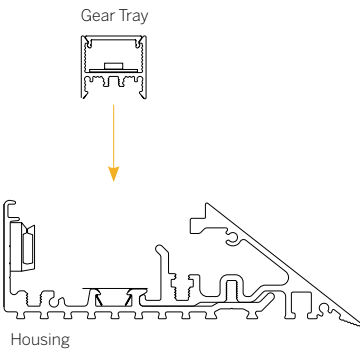
1. Provide product code for each run using the guide below.
2. Calculate and price each run completing the Total column.
3. Provide quantity of 8.5 ft (102 inch) field-cuttable housings (joiners will be included).
4. Measure mounting surface for housing and gear tray length (see gear tray order forms).
5. Provide Customer PO with this order form.

- Housings ship within 1 week of order date
- Gear trays ship within 2 weeks of confirmed field measurements
- Terms: Invoiced upon final shipment + freight with approved credit



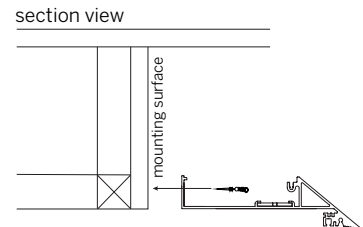
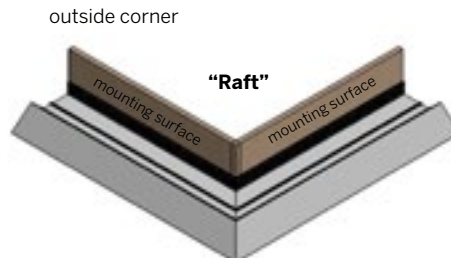
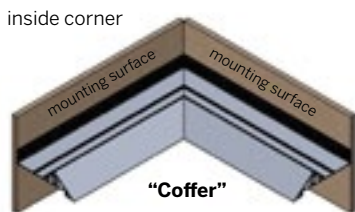
Model	Fixation	Pattern	Length	Power	CRI/CCT	Driver ¹	Lens	Finish	Options
WG-20MEC	RPT	S PC PR PZ	A A x B A x B x C A x B x A x B	L M H	927 930 935 940	X S D010 L3DAE L3D0E DFPN	SD (std)	W (std) F	CDC

Description	Code	Quantity
Complete Fixture	QS-WG-20MEC-RPT-S-110"-M-930-D010-SSD-W	1 run
Housings ³	QS-WG-20MEC	2
Complete Fixture		
Housings ³		
End Caps	Enter quantity to right to receive end caps with housings	



- 1 See page 3 for order code descriptions.
- 2 See page 11 for cutting instructions.
- 3 Includes joining connection kit (WG-JOINER-20MEC-KIT).

Measuring Instructions (housing + gear tray)



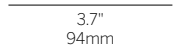
Quickship Order Form

20 Mini Edgeless Cove

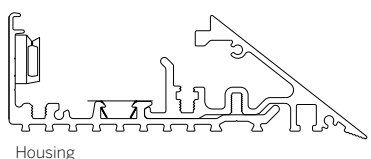


Model	Fixation	Pattern	Length	Power	CRI/ CCT	Driver ^d	Lens	Finish	Options
WG-20MEC	RPT	S PC PR PZ	A A x B A x B x C A x B x A x B	L M H	927 930 935 940	X S D010 L3DAE L3DOE DFPN	SD (std)	W (std) F	CDC

Description	Code	Quantity
Complete Fixture	QS-WG-20MEC-RPT-S-110"-M-930-D010-SSD-W	1 run
Housings	QS-WG-20MEC	2
Complete Fixture		
Housings		
End Caps	Enter quantity to right to receive end caps with housings	
Complete Fixture		
Housings		
End Caps	Enter quantity to right to receive end caps with housings	
Complete Fixture		
Housings		
End Caps	Enter quantity to right to receive end caps with housings	
Complete Fixture		
Housings		
End Caps	Enter quantity to right to receive end caps with housings	
Complete Fixture		
Housings		
End Caps	Enter quantity to right to receive end caps with housings	
Complete Fixture		
Housings		
End Caps	Enter quantity to right to receive end caps with housings	
Complete Fixture		
Housings		
End Caps	Enter quantity to right to receive end caps with housings	
Complete Fixture		
Housings		
End Caps	Enter quantity to right to receive end caps with housings	



Gear Tray



Housing

20 Mini Edgeless Cove



Ordering Information									
Model	Fixation	Pattern	Length	Power ¹	CRI/ CCT ²	Driver ³	Lens	Finish	Options
WG-20MEC	RPT	S ¹ PC ² PR ² PZ ²	A A x B A x B x C A x B x A x B	L M H	927 930 935 940	X S D010 L3DAE L3DOE DFPN	SD (std)	W (std) F	CDC

QUICKSHIP HOUSINGS AVAILABLE

Luminaire

- Continuous, evenly illuminated snap-in lens without visible LED pattern.
- Continuous mounting to any desired length (within 1/4").
- Satin Diffuser (standard) for maximum efficiency and spot free lens.
- Lengths and angles factory cut to exact field dimensions.
- Standard and custom corners.
- Field replaceable LED boards.

Fixation

- RPT = Recessed plaster trim

Pattern

- S = Straight run¹
- PC = Standard patterns coffer 2, 3 or 4 sided with 90° corners²
- PR = Standard patterns raft 2, 3 or 4 sided with 90° corners²
- PZ = Non-standard patterns and/or corners other than 90°, consult factory²

Length

- A, B, C = specify inches to the nearest 0.25" (i.e. 72.25") For patterns specify each length (i.e. 2 sided: A x B = 72.25" x 48"; 3 sided: A x B x C; 4 sided: A x B x A x B)

Power³

- L = 3W/ft low power (24V)
- M = 6W/ft medium power (24V)
- H = 10W/ft high power (24V)

Color/Lumens⁴

- 90+ CRI minimum (Low/Mid/High)
- 927 = 2700K, (237/475/831 lm/ft)
 - 930 = 3000K, (258/516/903 lm/ft)
 - 935 = 3500K, (306/613/1073 lm/ft)
 - 940 = 4000K, (364/728/1275 lm/ft)

Driver (remote)⁵

- X = No driver, ordered separately
- S = Standard driver 120-277V
- D010 = Osram, 10%, 0-10V dimming, 120-277V
- L3DAE = Lutron Hi-lume 1% EcoSystem, 120-277V
- L3DOE = Lutron Hi-lume Premier 0.1% EcoSystem, 120-277V
- DFPN = Lutron Forward Phase 1%, 120VAC

Lens

- SD = Satin clear diffuser (standard)

Finish

- W = White, 15% gloss, RAL9010 (standard)
- F = Custom finish, specify RAL

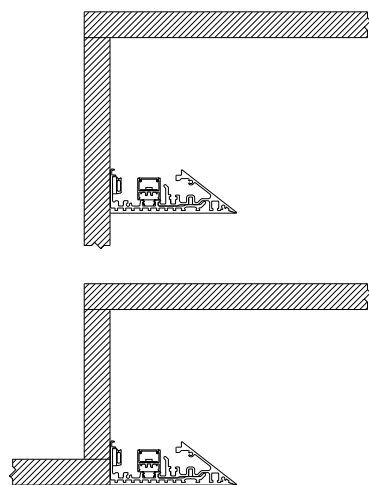
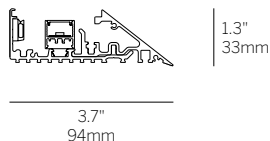
Options

- CDC = Clear dust cover

Emergency (remote only)

- Emergency LED battery backup available, order separately.

- Standard setup assumes the cove ends at a perpendicular wall and the LED board is setback from the end to minimize light on the perpendicular wall. Contact us for options.
- See pattern specs sheet.
- Wattage shown does not include power supplies/drivers.
- Delivered lumens with satin clear diffuser shown.
- Remote drivers required. See power supply page for details.



Gypsum Ceiling Mounting Options.
4" minimum offset, 12" typical offset.
Can be installed in Cove or Coffers.

20 Mini Edgeless Cove Straight Run Gear Tray Order Form

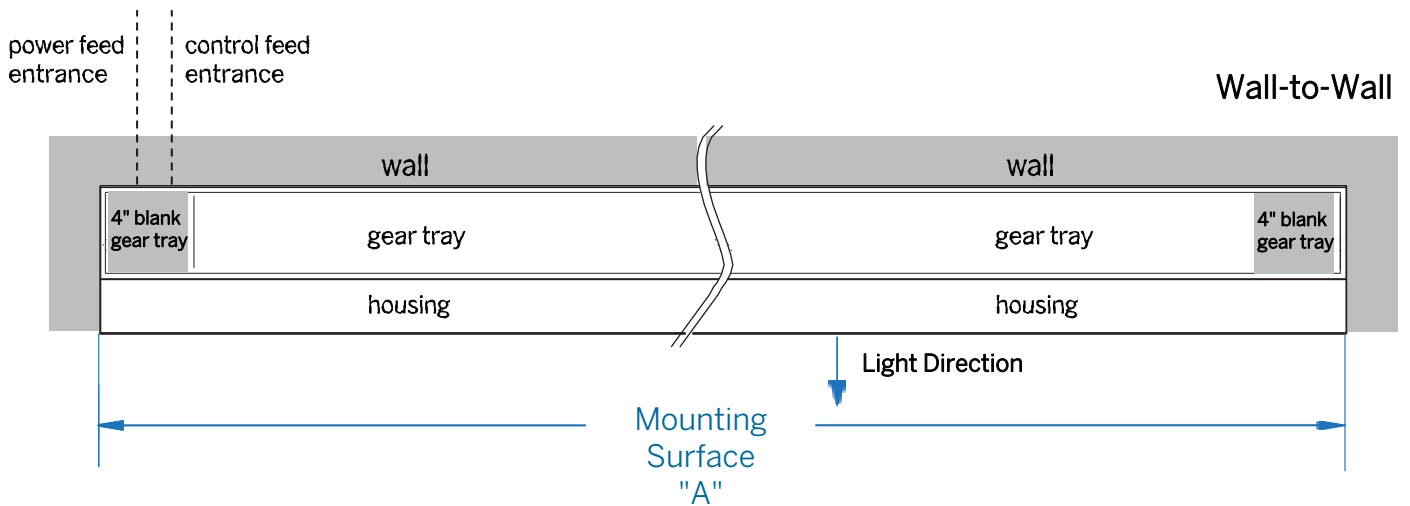
Field measure for Gear Tray production.

Notes

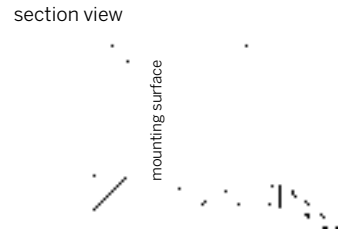
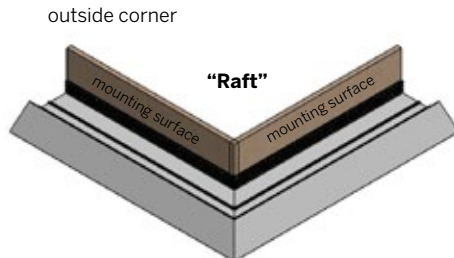
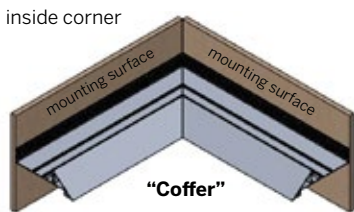
- 50' maximum per power feed. Power feed drilled in field.
- 4" blank gear tray will not be illuminated and is intended to reduce hot spot on the adjacent wall.
- All Gear Trays will be powered by integral drivers.
- A record drawing will be provided to show the intended layout design of these gear trays.
- A standard 4ft Gear Tray will be used at all locations where possible with odd" lengths comprising the remainder of each run.
- Please refer to Whitegoods Edgeless Cove Installation Instructions for detailed information about the installation and wiring of this fixture.

Project Name _____
 FixtureType _____
 PO# _____

Fixture	Qty.	Overall Length 'A'	Fixture	Qty.	Overall Length 'L1'
1	_____	_____	6	_____	_____
2	_____	_____	7	_____	_____
3	_____	_____	8	_____	_____
4	_____	_____	9	_____	_____
5	_____	_____	10	_____	_____



Measuring Instructions (housing + gear tray)



20 Mini Edgeless Cove Inside Corners (Coffer) Gear Tray Order Form

Field measure for Gear Tray production.

Notes

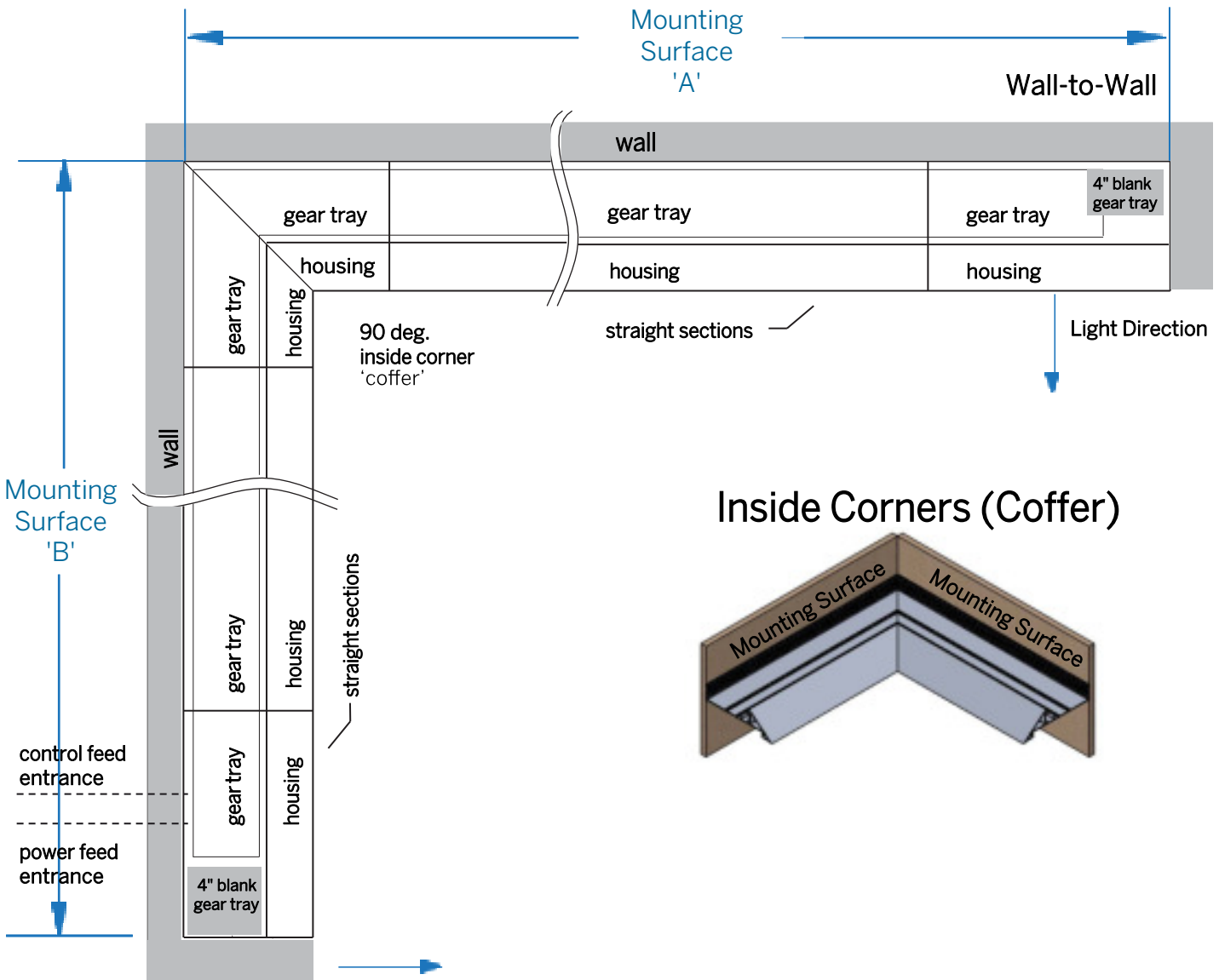
- 50' maximum per power feed. Power feed drilled in field.
- 4" blank gear tray will not be illuminated and is intended to reduce hot spot on the adjacent wall.
- All Gear Trays will be powered by integral drivers.
- A record drawing will be provided to show the intended layout design of these gear trays.
- A standard 4ft Gear Tray will be used at all locations where possible with odd" lengths comprising the remainder of each run.
- Please refer to Whitegoods Edgeless Cove Installation Instructions for detailed information about the installation and wiring of this fixture.

Project Name _____

FixtureType _____

PO# _____

Fixture	Qty.	Mounting Surface Length	
		'A'	'B'
1	_____	_____	_____
2	_____	_____	_____
3	_____	_____	_____
4	_____	_____	_____



Inside Corners (Coffer)

20 Mini Edgeless Cove Outside Corners (Raft) Gear Tray Order Form

Project Name _____

FixtureType _____

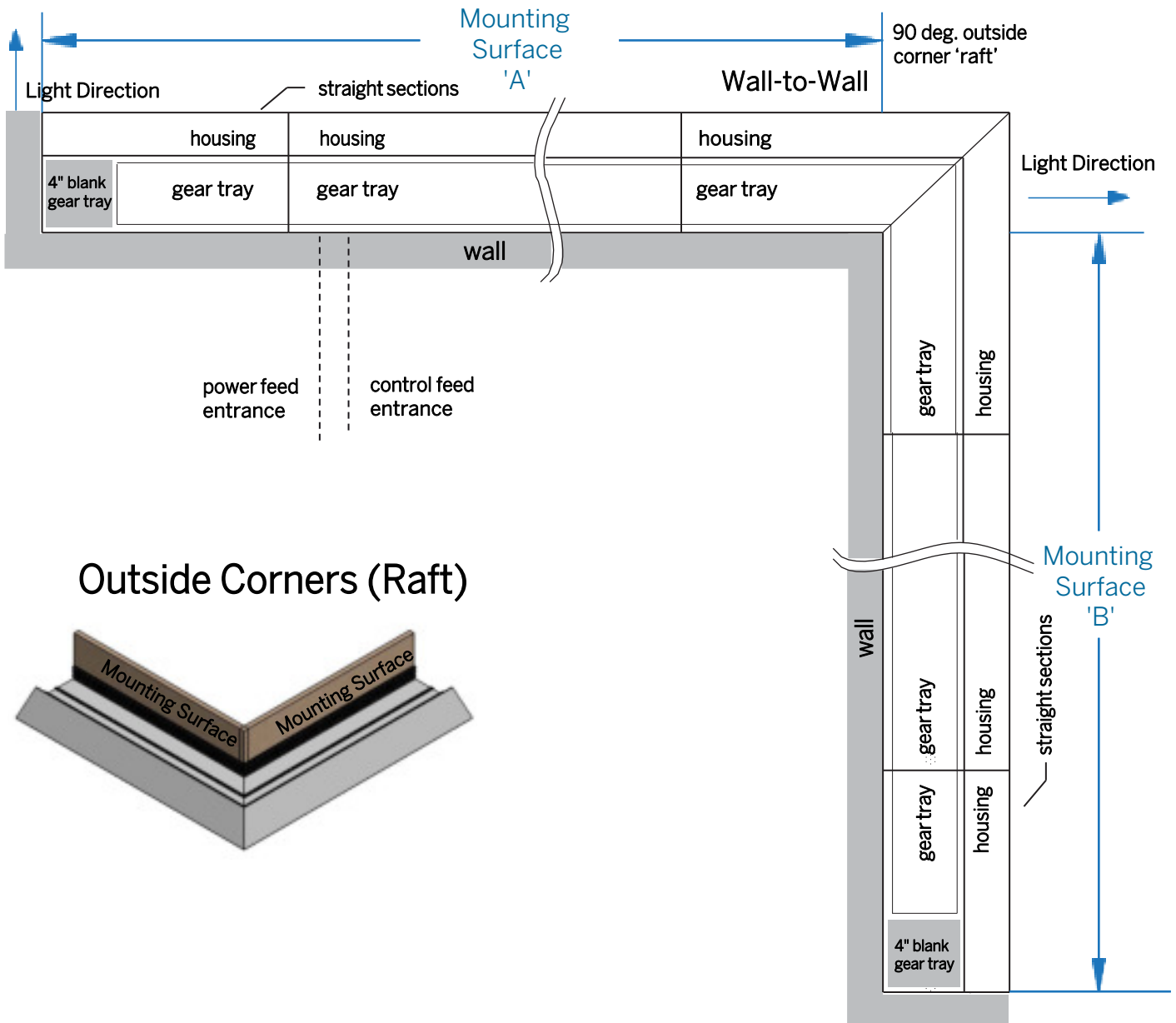
PO# _____

Field measure for Gear Tray production.

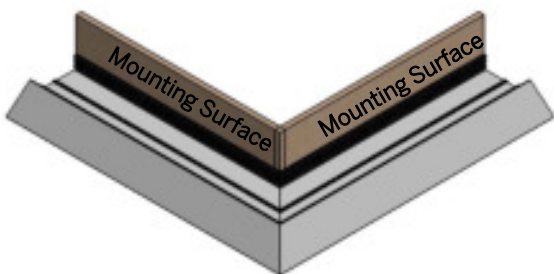
Notes

- 50' maximum per power feed. Power feed drilled in field.
- 4" blank gear tray will not be illuminated and is intended to reduce hot spot on the adjacent wall.
- All Gear Trays will be powered by integral drivers.
- A record drawing will be provided to show the intended layout design of these gear trays.
- A standard 4ft Gear Tray will be used at all locations where possible with odd" lengths comprising the remainder of each run.
- Please refer to Whitegoods Edgeless Cove Installation Instructions for detailed information about the installation and wiring of this fixture.

Fixture	Qty.	Mounting Surface Length	
		'A'	'B'
1	_____	_____	_____
2	_____	_____	_____
3	_____	_____	_____
_____	_____	_____	_____



Outside Corners (Raft)



20 Mini Edgeless Cove Inside Corners (Coffer) Gear Tray Order Form

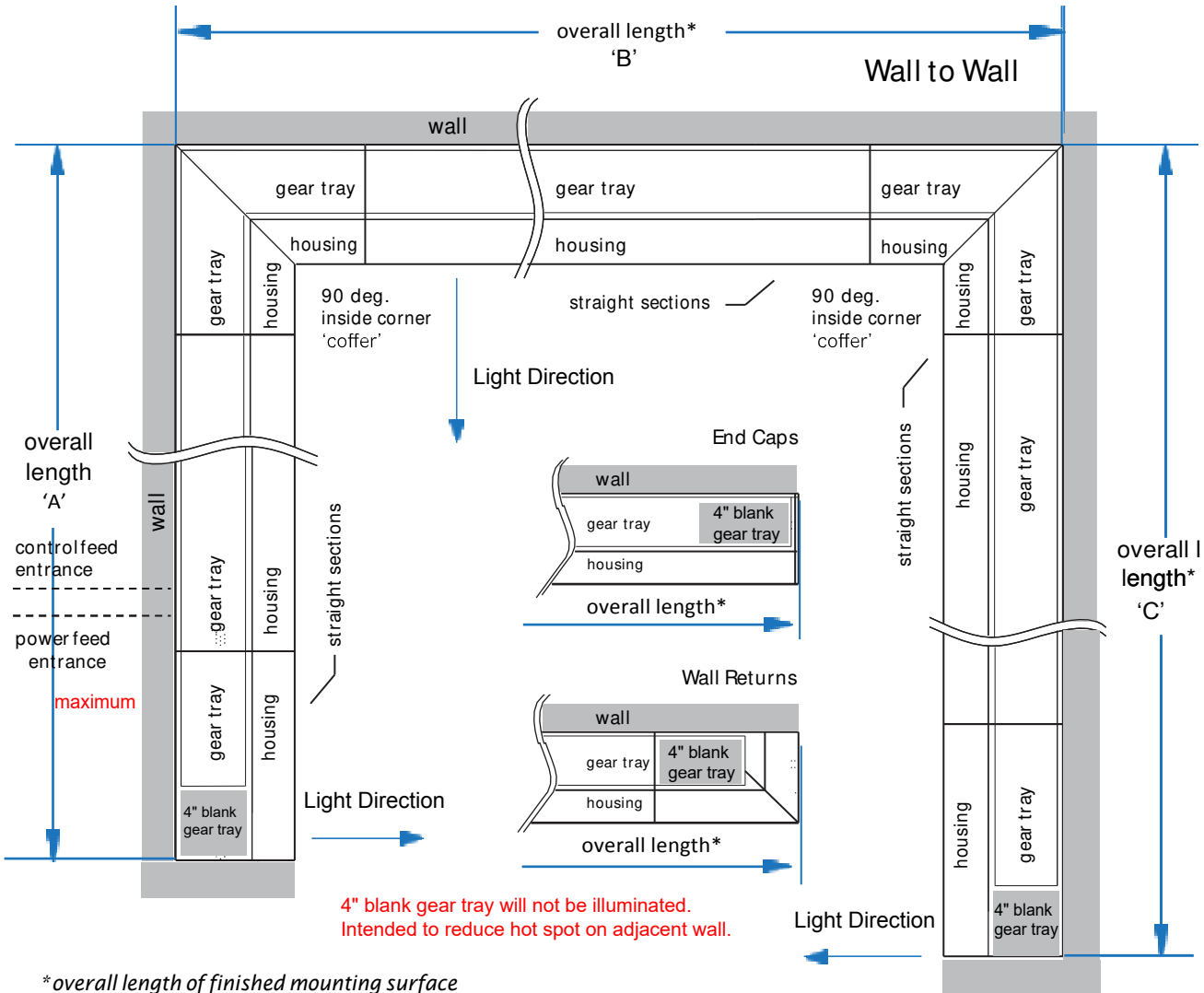
Project Name _____
 FixtureType _____
 PO# _____

Field measure for Gear Tray production.

Notes

- 50' maximum per power feed. Power feed drilled in field.
- 4" blank gear tray will not be illuminated and is intended to reduce hot spot on the adjacent wall.
- All Gear Trays will be powered by integral drivers.
- A record drawing will be provided to show the intended layout design of these gear trays.
- A standard 4ft Gear Tray will be used at all locations where possible with odd" lengths comprising the remainder of each run.
- Please refer to Whitegoods Edgeless Cove Installation Instructions for detailed information about the installation and wiring of this fixture.

Fixture	Qty.	Mounting Surface Length		
		'A'	'B'	'C'
1	_____	_____	_____	_____
2	_____	_____	_____	_____
3	_____	_____	_____	_____
4	_____	_____	_____	_____



4" blank gear tray will not be illuminated. Intended to reduce hot spot on adjacent wall.

*overall length of finished mounting surface

20 Mini Edgeless Cove Outside Corners (Raft) Gear Tray Order Form

Project Name _____

Fixture Type _____

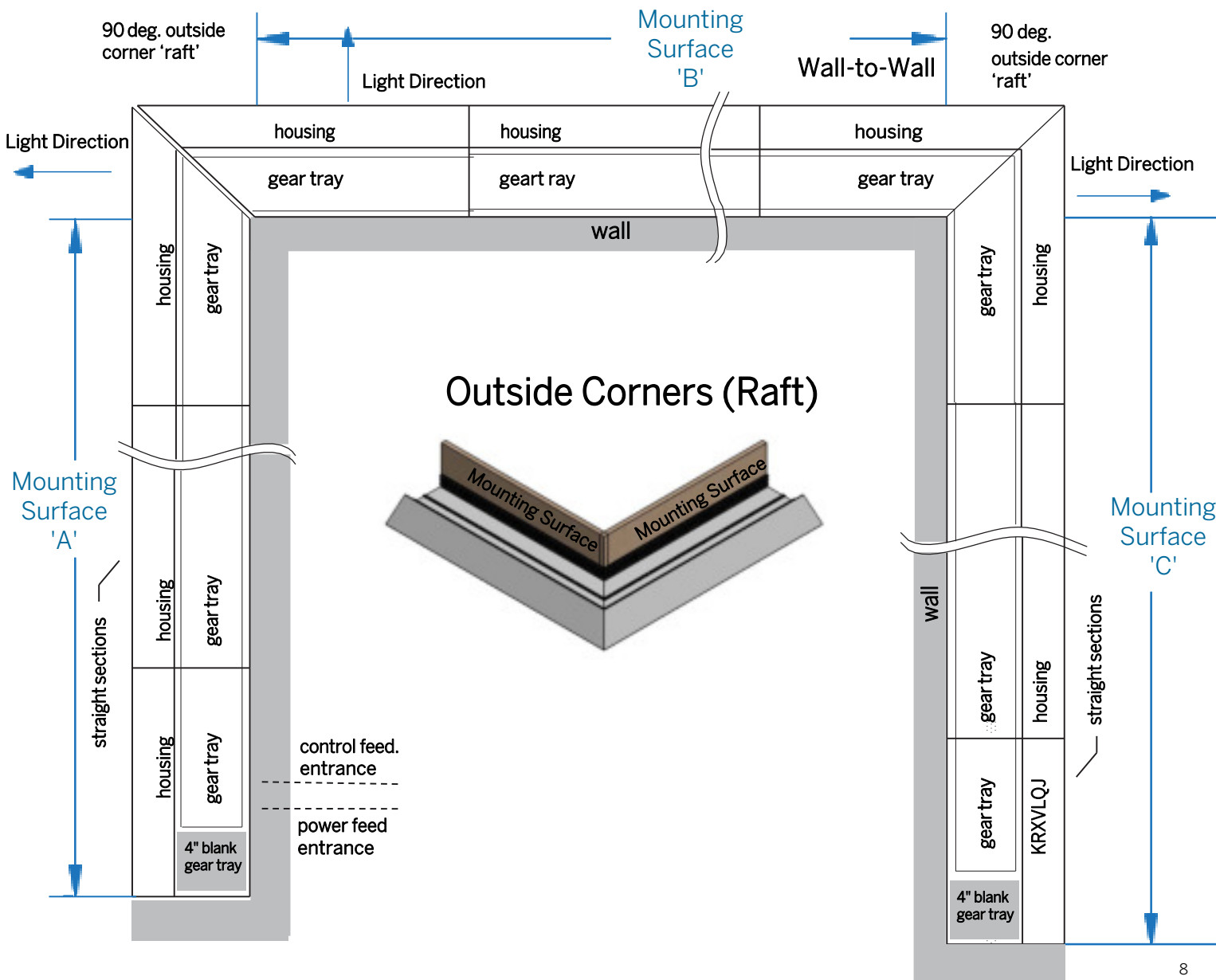
PO# _____

Field measure for Gear Tray production.

Notes

- 50' maximum per power feed. Power feed drilled in field.
- 4" blank gear tray will not be illuminated and is intended to reduce hot spot on the adjacent wall.
- All Gear Trays will be powered by integral drivers.
- A record drawing will be provided to show the intended layout design of these gear trays.
- A standard 4ft Gear Tray will be used at all locations where possible with odd" lengths comprising the remainder of each run.
- Please refer to Whitegoods Edgeless Cove Installation Instructions for detailed information about the installation and wiring of this fixture.

Fixture	Qty.	Mounting Surface Length		
		'A'	'B'	'C'
1	_____	_____	_____	_____
2	_____	_____	_____	_____
3	_____	_____	_____	_____
4	_____	_____	_____	_____



20 Mini Edgeless Cove Inside Corners (Coffer) Gear Tray Order Form

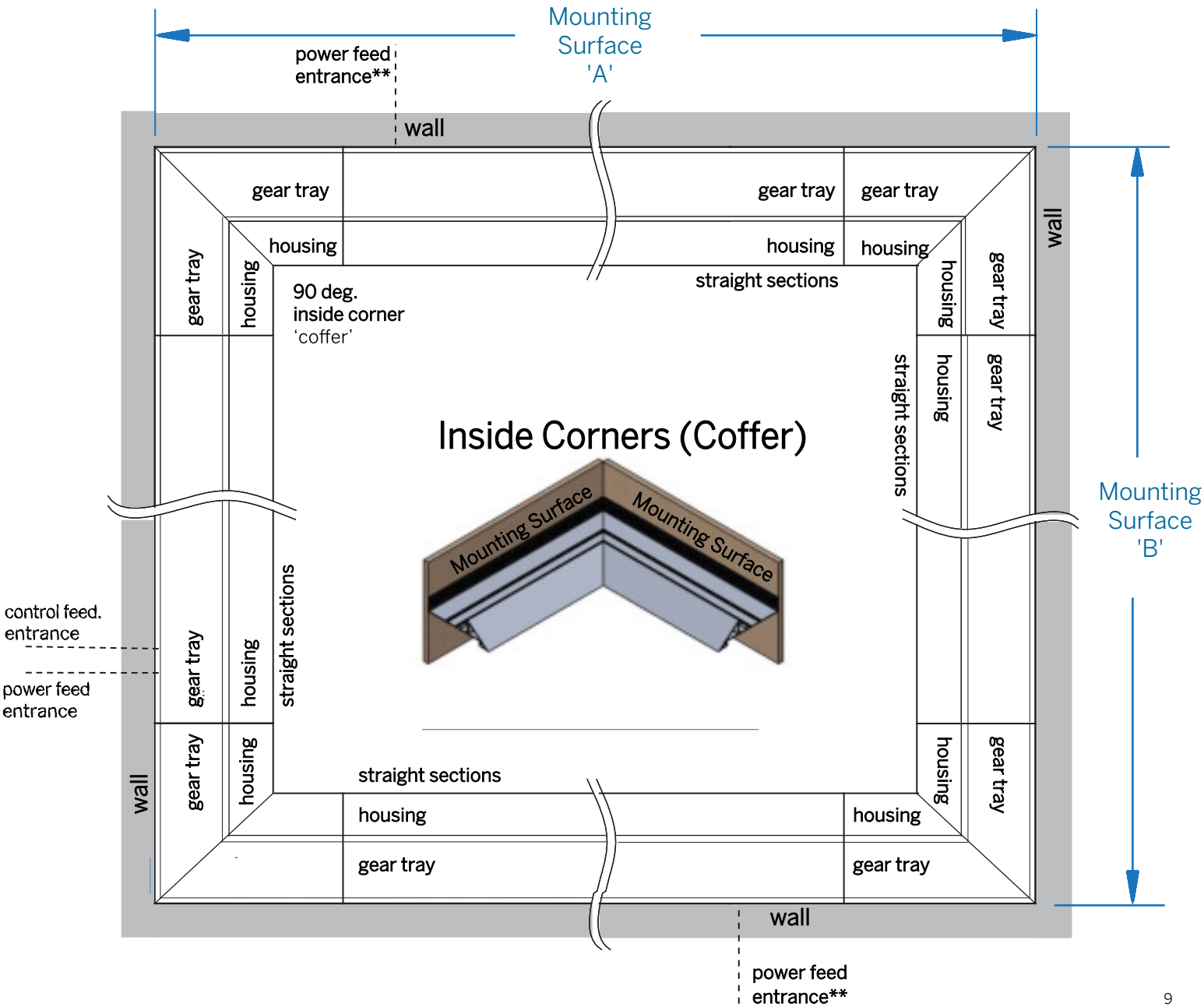
Field measure for Gear Tray production.

Notes

- 50' maximum per power feed. Power feed drilled in field.
- 4" blank gear tray will not be illuminated and is intended to reduce hot spot on the adjacent wall.
- All Gear Trays will be powered by integral drivers.
- A record drawing will be provided to show the intended layout design of these gear trays.
- A standard 4ft Gear Tray will be used at all locations where possible with odd" lengths comprising the remainder of each run.
- Please refer to Whitegoods Edgeless Cove Installation Instructions for detailed information about the installation and wiring of this fixture.

Project Name _____
 Fixture Type _____
 PO# _____

Fixture	Qty.	Mounting Surface Length	
		'A'	'B'
1	_____	_____	_____
2	_____	_____	_____
3	_____	_____	_____
4	_____	_____	_____



20 Mini Edgeless Cove Outside Corners (Raft) Gear Tray Order Form

Field measure for Gear Tray production.

Project Name _____

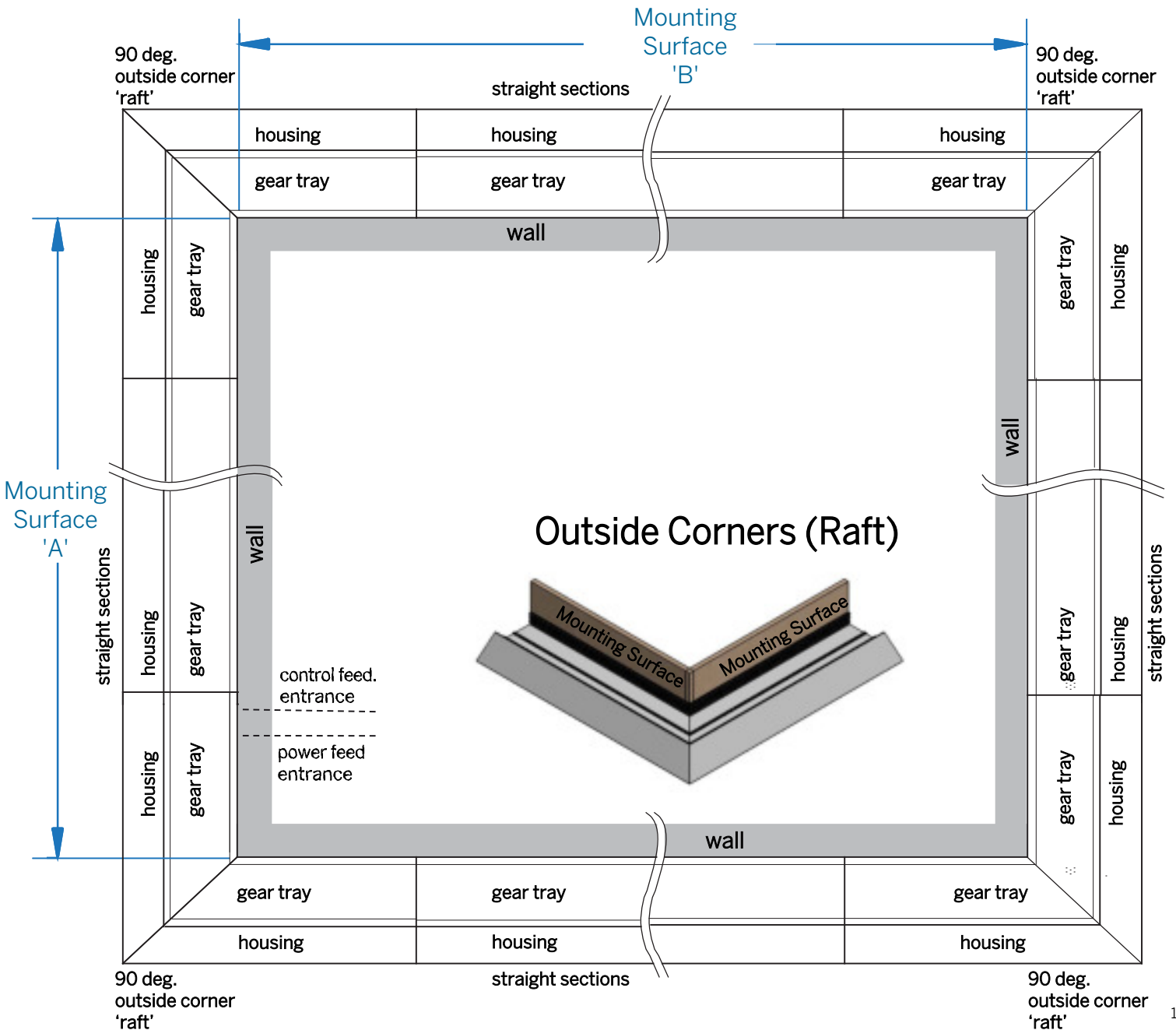
Fixture Type _____

PO# _____

Notes

- 50' maximum per power feed. Power feed drilled in field.
- 4" blank gear tray will not be illuminated and is intended to reduce hot spot on the adjacent wall.
- All Gear Trays will be powered by integral drivers.
- A record drawing will be provided to show the intended layout design of these gear trays.
- A standard 4ft Gear Tray will be used at all locations where possible with odd" lengths comprising the remainder of each run.
- Please refer to Whitegoods Edgeless Cove Installation Instructions for detailed information about the installation and wiring of this fixture.

Fixture	Qty.	Mounting Surface Length	
		'A'	'B'
1	_____	_____	_____
2	_____	_____	_____
3	_____	_____	_____
4	_____	_____	_____

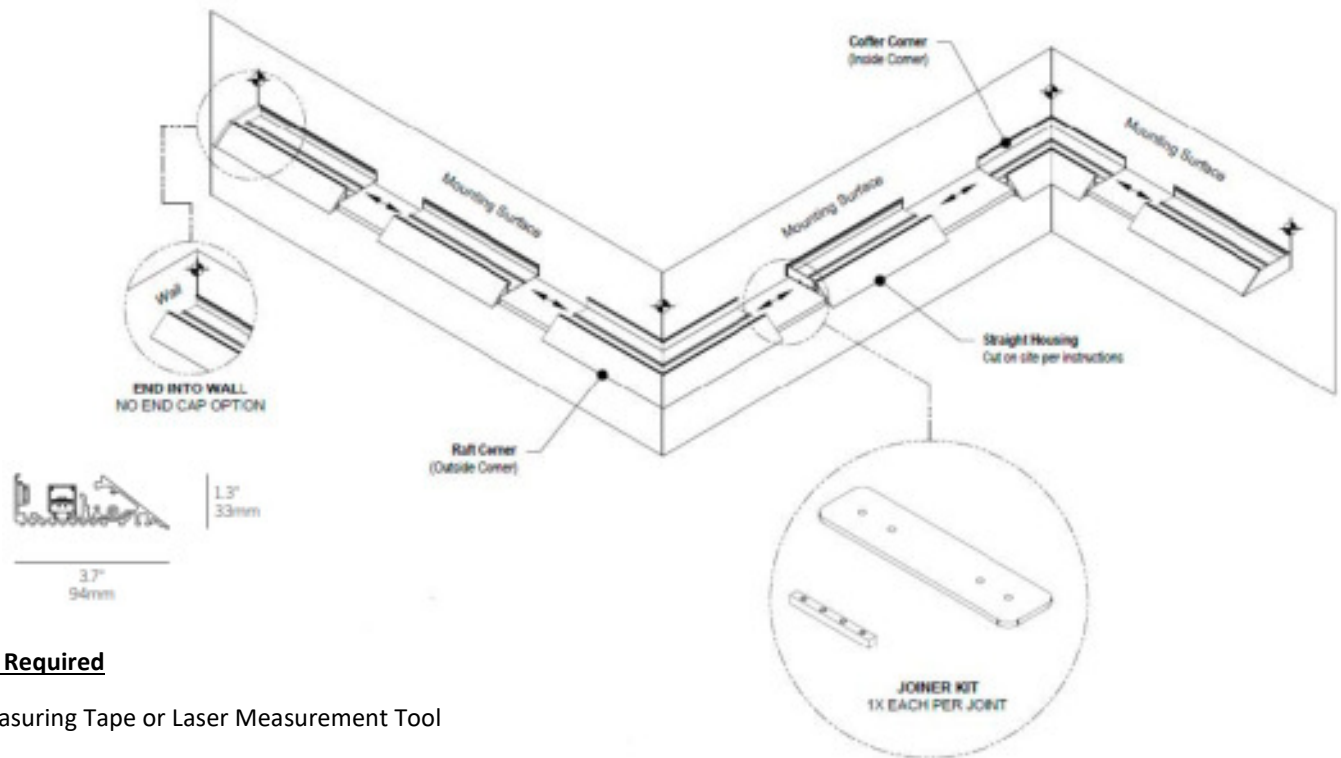


20 Mini Edgeless Cove



Housing Field Cutting Instructions

The Whitegoods 20 Mini Edgeless Cove Housing can be field cut for straight, continuous runs, as well as runs of product with corners. Housings are provided in nominal 8'6" lengths and require a finish cut on both ends. **Do not attempt to align housings unless you have made a straight and smooth cut on the mating ends of each housing, or those ends to have an end cap applied.**



Tools Required

- Measuring Tape or Laser Measurement Tool
- Saw—Compound Miter Saw w/8-10 Tooth per Inch, Bi-Metal Blade Recommended
- Adjustable Angle Measuring Tool of choice

Cutting Procedure

- Locate and measure the mounting surface for straight runs. Mounting surface is defined above
- Using a saw as recommended above, make straight and clean cuts on all housings that will be joined with another housing, or an end cap. All 102" material will need a finish cut, and is to have a clean edge that is free of paint.
- Clamping and support of the material while cutting should be as shown below. We recommend using a 1x4 support under the extrusion to keep it square. This is especially important when cutting corners of any kind. Clamping to the back side should be made in a way that is not obstructing to the saw path or safety of the operator.

Housing Installation

- See complete Edgeless Cove Installation Instructions.

Field Measurement for Gear Tray Production

- See Gear Tray Measurement Instructions

