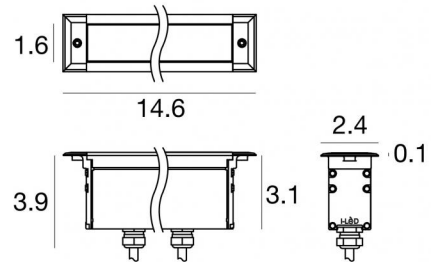




Linear | 6 x powerLEDs 13.2 W | CRI 80 | 3500K | Wide Flood | Anodized Aluminum | Wet location | 120V/277V on/off
LL-E92132-T-60



| Technical data | |
|--|-------------------------------|
| Type | Frame |
| Installation position | Wall lights - Floor |
| Installation environment | Outdoor |
| Light Source | LED |
| Optics | Wide Flood |
| Light emission direction | upward |
| Power | 13.2 W |
| Operation | 120V/277V + None interface |
| Source lumens | 1812 lm |
| CCT | 3500 K |
| Color rendering index | 80 Ra |
| Safety class | Class 2 |
| IP | IP67 |
| IK | IK10 |
| Glow wire test | 850° |
| Direct mounting on normally flammable surfaces | Yes |
| CE | Yes |
| ETL | Yes |
| Driver included | Integral driver |
| Dimmable article | No |
| Directional | No |
| Tilting | No |
| Walk-over | Yes |
| Drive-over | No |
| Cable included | Yes |
| Cable length | 0.66 ft |
| Resin potting | No |
| Type of light emission | Single emission |
| Net weight | 3.31 lbs |
| Electrostatic discharge protection | 4 KV |
| Surge protection | 1 KV |
| Product technological characteristics | Acquastop - TVS |
| Ordinary temperature on the glass | 104 °F |

Finishing casing

| | |
|----------|-------------------|
| Material | Aluminum 6060 |
| Color | Anodized Aluminum |
| Process | 20 µm anodizing |

Finishing diffuser

| | |
|----------|------------------------------|
| Material | Extra clear glass - Tempered |
| Color | transparent |
| Process | Silk-screening |

Cables Electrification

| | |
|-----------------------|---------------------|
| Cable connector | Male Plug 3 pin |
| IP (locked condition) | 68 |
| Cable connector | Female Socket 3 Pin |

Notes:



Linear | 6 x powerLEDs 13.2 W | CRI 80 | 3500K | Wide Flood | Anodized Aluminum | Wet location | 120V/277V on/off
LL-E92132-T-60

Single emission lines for outdoor application. The 3500 LED light source with a wide flood light distribution is composed of 6 powered LEDs with CCT of 3500 K and a CRI 80; the source luminous flux is 1812 lm, with a 137.3 lm/W nominal luminous efficacy.

The device body is made of aluminium 6060 and features a anodised aluminum finish, processed by means of 20 µm anodizing; the diffuser is made of extra clear glass - tempered with a silk-screening treatment. The ingress protection degree is IP67; the total weight is of 3.307 lbs.

The total absorbed power is 14.5 W. The power supply cable is included and features a 0.656 ft lenght.

and can be wall lights or floor-mounted with an outer casing, code E98671(for concrete or masonry).

Compliant with the EN 60598-1 standard and its specific provisions.

Energy efficiency class

This product contains a light source of energy efficiency class E.

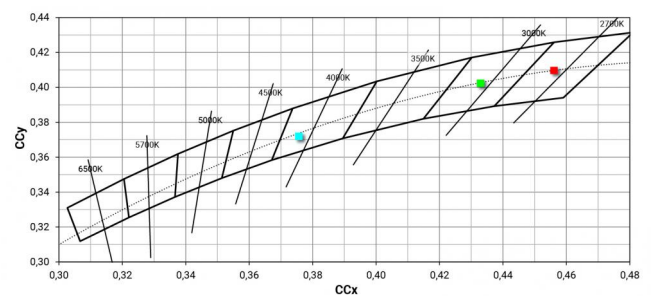
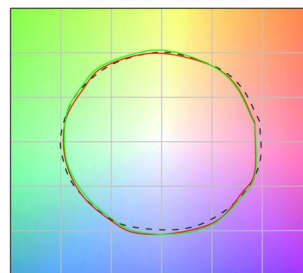
Led features

| | |
|---------------------------------------|---------------|
| Source lumens | 1812 lm |
| Color temperature | 3500 K |
| Standard Deviation of Colour Matching | 1/16 ANSI BIN |
| Color rendering index | 80 Ra |
| Black Body Locus | On |

LED Life / Failure Ratio

L70 B10 C0 361980h (at Tj 60 Ta 25)

COLOR VECTOR GRAPHIC





Cable and connector

Length 196.85 in; ; cable gland: no; external diameter: 0.37 in;
colors: white - black - blue - green - brown - yellow-green.

Code

E98147

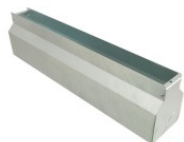


Cable and connector

Length 393.7 in; ; cable gland: no; external diameter: 0.37 in;
colors: white - black - blue - green - brown - yellow-green.

Code

E98146



Outer casing

installation position: wall lights, floor; type of installation:
masonry L=14.02in, H=5.44in, D=3.94in.
Material:Iron, color:zinc, process:Galvanising.

Code

E98671