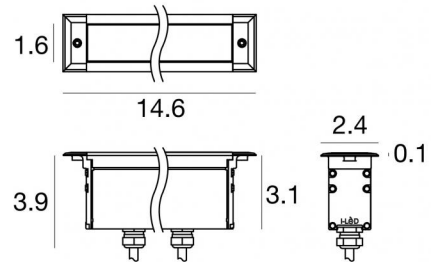




Linear | 6 x powerLEDs 13.2 W | CRI 80 | 3500K | Spot | Anodized Aluminum | Wet location |
 120V/277V on/off
LL-E92132-T-15



Technical data	
Type	Frame
Installation position	Wall lights - Floor
Installation environment	Outdoor
Light Source	LED
Optics	Spot
Light emission direction	upward
Power	13.2 W
Operation	120V/277V + None interface
Source lumens	1812 lm
CCT	3500 K
Color rendering index	80 Ra
Safety class	Class 2
IP	IP67
IK	IK10
Glow wire test	850°
Direct mounting on normally flammable surfaces	Yes
CE	Yes
ETL	Yes
Driver included	Integral driver
Dimmable article	No
Directional	No
Tilting	No
Walk-over	Yes
Drive-over	No
Cable included	Yes
Cable length	0.66 ft
Resin potting	No
Type of light emission	Single emission
Net weight	3.31 lbs
Electrostatic discharge protection	4 KV
Surge protection	1 KV
Product technological characteristics	Acquastop - TVS
Ordinary temperature on the glass	104 °F

Finishing casing

Material	Aluminum 6060
Color	Anodized Aluminum
Process	20 µm anodizing

Finishing diffuser

Material	Extra clear glass - Tempered
Color	transparent
Process	Silk-screening

Cables Electrification

Cable connector	Male Plug 3 pin
IP (locked condition)	68
Cable connector	Female Socket 3 Pin

Notes:



Linear | 6 x powerLEDs 13.2 W | CRI 80 | 3500K | Spot | Anodized Aluminum | Wet location | 120V/277V on/off
LL-E92132-T-15

Single emission lines for outdoor application. The 3500 LED light source with a spot light distribution is composed of 6 powered LEDs with CCT of 3500 K and a CRI 80; the source luminous flux is 1812 lm, with a 137.3 lm/W nominal luminous efficacy.

The device body is made of aluminium 6060 and features a anodised aluminum finish, processed by means of 20 µm anodizing; the diffuser is made of extra clear glass - tempered with a silk-screening treatment. The ingress protection degree is IP67; the total weight is of 3.307 lbs.

The total absorbed power is 14.5 W. The power supply cable is included and features a 0.656 ft lenght.

and can be wall lights or floor-mounted with an outer casing, code E98671(for concrete or masonry).

Compliant with the EN 60598-1 standard and its specific provisions.

Energy efficiency class

This product contains a light source of energy efficiency class E.

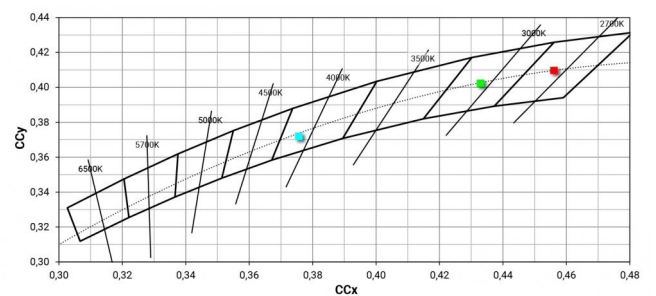
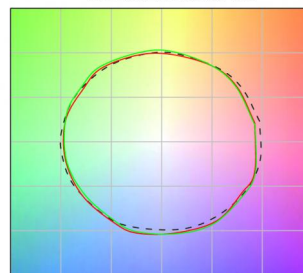
Led features

Source lumens	1812 lm
Color temperature	3500 K
Standard Deviation of Colour Matching	1/16 ANSI BIN
Color rendering index	80 Ra
Black Body Locus	On

LED Life / Failure Ratio

L70 B10 C0 361980h (at Tj 60 Ta 25)

COLOR VECTOR GRAPHIC





Cable and connector

Length 196.85 in; ; cable gland: no; external diameter: 0.37 in;
colors: white - black - blue - green - brown - yellow-green.

Code

E98147

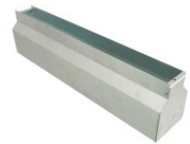


Cable and connector

Length 393.7 in; ; cable gland: no; external diameter: 0.37 in;
colors: white - black - blue - green - brown - yellow-green.

Code

E98146



Outer casing

installation position: wall lights, floor; type of installation:
masonry L=14.02in, H=5.44in, D=3.94in.
Material:Iron, color:zinc, process:Galvanising.

Code

E98671