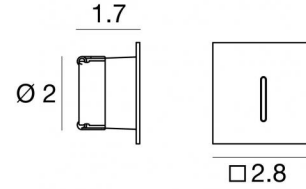




Wall Lights | 1 x powerLED 2 W | CRI 80 | 4000K | Blade | Embossed white RAL 9003 | Wet location | 630mA
LL-E92558-N-05



Technical data

Type	Encasement with flange
Installation position	Wall lights
Installation environment	Outdoor
Light Source	LED
Optics	Narrow Spot
Light emission direction	downward
Power	2 W
Operation	630mA
Source lumens	249 lm
CCT	4000 K
Color rendering index	80 Ra
Safety class	Class 2
IP	IP65
Glow wire test	850°
Direct mounting on normally flammable surfaces	Yes
CE	Yes
ETL	Yes
Dimmable article	No
Directional	No
Tilting	No
Walk-over	No
Drive-over	No
Cable included	Yes
Cable length	3.28 ft
Resin potting	Yes
Type of light emission	Single emission
Net weight	0.33 lbs
Electrostatic discharge protection	No
Surge protection	No
Product technological characteristics	Acquastop - TVS
Ordinary temperature on the glass	104 °F

Finishing casing

Material	Aluminum 6026
Color	Embossed white RAL 9003
Process	Open pore anodizing + Powder Coating

Finishing diffuser

Material	Extra clear glass
Color	transparent

Cables Electrification

Cable connector	No
-----------------	----

Notes:

Wall Lights | 1 x powerLED 2 W | CRI 80 | 4000K | Blade | Embossed white RAL 9003 | Wet location | 630mA | Base
LL-E92558-N-05

Single emission wall lights for outdoor application. The natural white LED light source with a blade light distribution is composed of 1 powered LEDs with CCT of 4000 K and a CRI 80; the source luminous flux is 249 lm, with a 124.5 lm/W nominal luminous efficacy.

The device body is made of aluminium 6026 and features a embossed white ral 9003 finish, processed by means of open pore anodizing + powder coating; the diffuser is made of extra clear glass. The ingress protection degree is IP65; the total weight is of 0.331 lbs.

The total absorbed power is 2 W. The power supply cable is included and features a 3.281 ft lenght.

and can be wall lights-mounted, with a 2.047 in diameter hole (in plasterboard) with an outer casing, code E84338(for concrete or masonry).

Compliant with the EN 60598-1 standard and its specific provisions.

Energy efficiency class

This product contains a light source of energy efficiency class D.

Led features

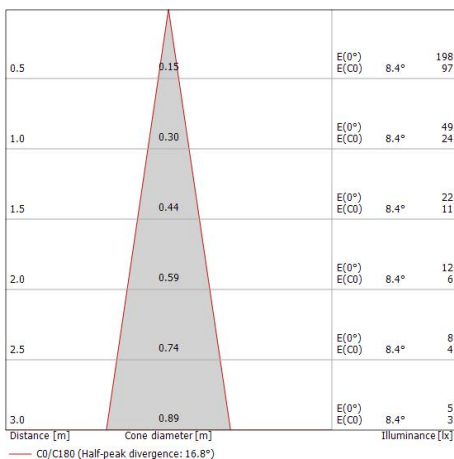
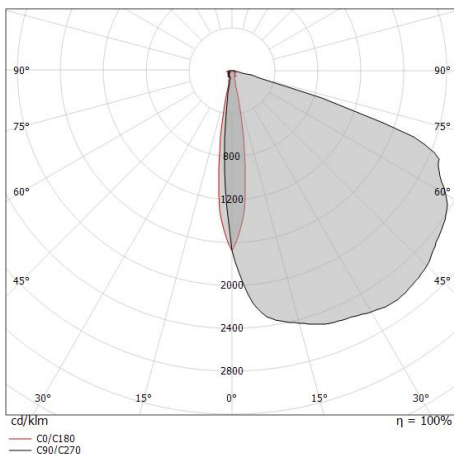
Light Output Ratio (LOR)	12 %
Source lumens	249 lm
Delivered lumens	30 lm
Power	2 W
Luminaire efficacy	15 lm/W
Color temperature	4000 K
Standard Deviation of Colour Matching	1.5 Step
Color rendering index	80 Ra

LED Life / Failure Ratio

L70 B10 C0 361980h (at Tj 60 Ta 25)

OPTICAL

Light distribution symmetry	Symmetrical 2
C0/C180 optics	17°





Cut_Q | Wall Lights | Accessories
LL-E92558-N-05



Outer casing - Burnished
Type of installation: masonry L=2.83in, H=2.44in, D=2.44in

Code
E84338