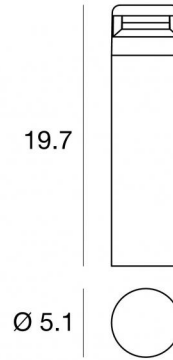




Bollard & Pole | arrayLED 9 W | CRI 80 | 4000K | General Lighting | Dark brown | Wet location | 120V/277V + 0-10V interface
LL-E59176-N-00



Technical data	
Type	Midi
Installation position	Floor
Installation environment	Outdoor
Light Source	LED
Optics	General Lighting
Light emission direction	downward
Power	9 W
Operation	120V/277V + 0-10V interface
Source lumens	1294 lm
CCT	4000 K
Color rendering index	80 Ra
Safety class	Class 2
IP	IP65
IK	IK09
Glow wire test	650°
Direct mounting on normally flammable surfaces	Yes
CE	Yes
ETL	Yes
Driver included	Integral driver
Dimmable article	0-10V
Directional	No
Tilting	No
Walk-over	No
Drive-over	No
Cable included	No
Resin potting	No
Type of light emission	Single emission
Net weight	3.91 lbs
Electrostatic discharge protection	4 KV
Surge protection	3,75 KV
Product technological characteristics	TCS
Ordinary temperature on the glass	104 °F

Finishing casing	
Material	Die-cast Aluminum EN AB - 46100
Color	Dark brown
Process	Open pore anodizing + Powder Coating

Finishing diffuser	
Material	UV Resistant Polymethylmethacrylate
Color	transparent

Finishing base	
Material	Aluminum 6060
Color	Dark brown
Process	Open pore anodizing + Powder Coating

Notes:

Bollard & Pole | arrayLED 9 W | CRI 80 | 4000K | General Lighting | Dark brown | Wet location | 120V/277V + 0-10V interface | Base
LL-E59176-N-00

Single emission bollard & pole for outdoor application. The natural white LED light source with a general lighting light distribution is composed of 1 arrayed LEDs with CCT of 4000 K and a CRI 80; the source luminous flux is 1294 lm, with a 143.8 lm/W nominal luminous efficacy.

The device body is made of die-cast aluminium en ab - 46100 and features a dark brown finish, processed by means of open pore anodizing + powder coating; the diffuser is made of uv resistant polymethylmethacrylate. The ingress protection degree is IP65; the total weight is of 3.913 lbs.

The total absorbed power is 11 W.

and can be floor-mounted.

Compliant with the EN 60598-1 standard and its specific provisions.

Energy efficiency class

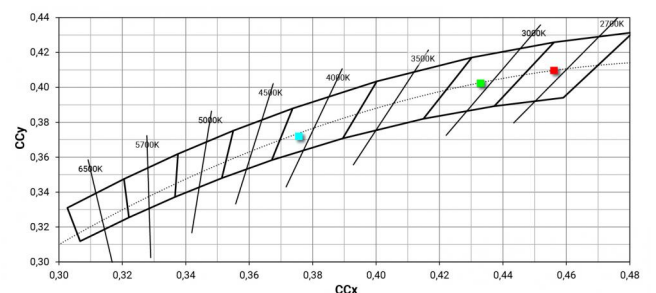
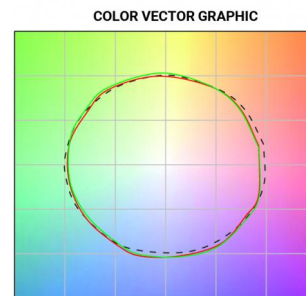
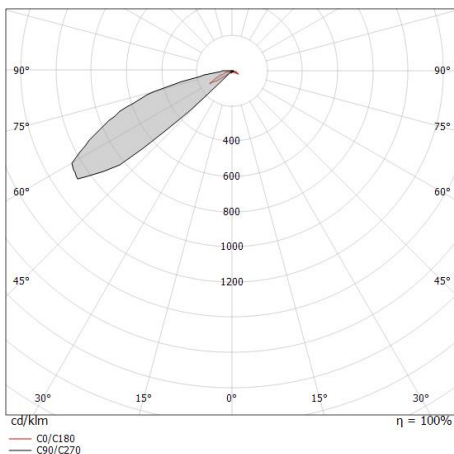
This product contains a light source of energy efficiency class E.

Led features

Light Output Ratio (LOR)	29 %
Source lumens	1294 lm
Delivered lumens	380 lm
Power	11 W
Luminaire efficacy	34 lm/W
Color temperature	4000 K
Standard Deviation of Colour Matching	2 Step MacAdam
Color rendering index	80 Ra
Black Body Locus	On

LED Life / Failure Ratio

L70 B10 C0 252000h (at Tj 65 Ta 25)





Joe | Bollard & Pole | Accessories

LL-E59176-N-00

Anchor
Cover material: stainless steel

Code

E59950