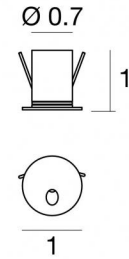
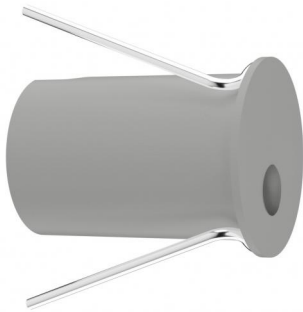




Wall Lights | 1 x powerLED 1.0 W | CRI 80 | 2700K | Asymmetric Wallwasher | Gray RAL 9006 | Damp location | 350mA  
**LL-E93513-M-07**



Technical data	
Type	Encasement with flange
Installation position	Wall lights
Installation environment	Indoor
Light Source	LED
Optics	Asymmetric Wallwasher
Light emission direction	downward
Power	1 W
Operation	350mA
Source lumens	98 lm
CCT	2700 K
Color rendering index	80 Ra
Safety class	Class 2
IP	IP44
Glow wire test	850°
Direct mounting on normally flammable surfaces	Yes
CE	Yes
ETL	Yes
Dimmable article	No
Directional	No
Tilting	No
Walk-over	No
Drive-over	No
Cable included	Yes
Cable length	3.28 ft
Resin potting	Yes
Type of light emission	Single emission
Net weight	0.26 lbs
Electrostatic discharge protection	No
Surge protection	No
Ordinary temperature on the glass	104 °F

Finishing casing	
Material	Aluminum 6026
Color	Gray RAL 9006
Process	Powder coating
Finishing diffuser	
Material	UV Resistant Polycarbonate
Color	transparent
Cables Electrification	
Cable connector	No

**Notes:**

---



---



---



---



Wall Lights | 1 x powerLED 1.0 W | CRI 80 | 2700K | Asymmetric Wallwasher | Gray RAL 9006 | Damp location | 350mA | Base LL-E93513-M-07

Single emission wall lights for indoor application. The super warm LED light source with a asymmetric wallwasher light distribution is composed of 1 powered LEDs with CCT of 2700 K and a CRI 80; the source luminous flux is 98 lm, with a 98.0 lm/W nominal luminous efficacy.

The device body is made of aluminium 6026 and features a grey ral 9006 finish, processed by means of powder coating; the diffuser is made of uv resistant polycarbonate. The ingress protection degree is IP44; the total weight is of 0.265 lbs.

The total absorbed power is 1 W. The power supply cable is included and features a 3.281 ft lenght.

and can be wall lights-mounted, with a 0.787 in diameter hole (in plasterboard) with an outer casing, code E98950(for concrete or masonry).

Compliant with the EN 60598-1 standard and its specific provisions.

### Energy efficiency class

This product contains a light source of energy efficiency class F.

### Led features

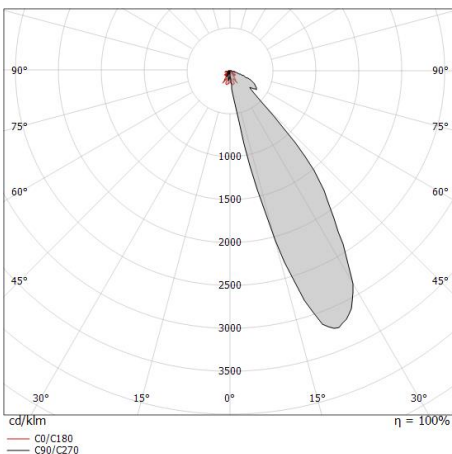
Light Output Ratio (LOR)	7 %
Source lumens	98 lm
Delivered lumens	7 lm
Power	1,0 W
Luminaire efficacy	7 lm/W
Color temperature	2700 K
Standard Deviation of Colour Matching	1/16 ANSI BIN
Color rendering index	80 Ra

### LED Life / Failure Ratio

L70 B10 C0 197960h (at Tj 60 Ta 25 )

### OPTICAL

Light distribution symmetry	Symmetrical 2
C0/C180 optics	86°



Distance [m]	Cone diameter [m]	Illuminance [lx]
0.5	0.93	E(0°) 42.9° 0 E(C0) 0 1
1.0	1.86	E(0°) 42.9° 0 E(C0) 0 0
1.5	2.79	E(0°) 42.9° 0 E(C0) 0 0
2.0	3.72	E(0°) 42.9° 0 E(C0) 0 0
2.5	4.65	E(0°) 42.9° 0 E(C0) 0 0
3.0	5.58	E(0°) 42.9° 0 E(C0) 0 0

Distance [m] Cone diameter [m] Illuminance [lx]  
 — C0/C180 (Half-peak divergence: 85.8°)



Laella\_R | Wall Lights | Accessories  
**LL-E93513-M-07**

Outer casing

Type of installation: masonry L=1.22in, H=0.83in, D=0.83in.

Material: Polyamide, color: black.

**Finish**

Black

**Code**

E98950