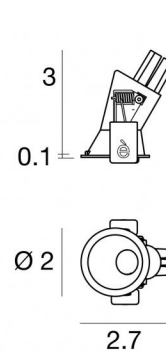




Downlights | 1 x powerLED 2 W | CRI 90 | 2700K | Flood | Embossed white RAL 9003 |  
 Damp location | 630mA  
**LL-E90814-M-30**



1.8

Technical data	
Type	Encasement with flange
Installation position	Ceiling
Installation environment	Indoor
Light Source	LED
Optics	Flood
Light emission direction	downward
Power	2 W
Operation	630mA
Source lumens	157 lm
CCT	2700 K
Color rendering index	90 Ra
Safety class	Class 2
IP	IP44
Optical compartment IP	IP65
Glow wire test	850°
Direct mounting on normally flammable surfaces	Yes
CE	Yes
ETL	Yes
Dimmable article	No
Directional	No
Tilting	No
Walk-over	No
Drive-over	No
Cable included	Yes
Cable length	0.56 ft
Resin potting	No
Type of light emission	Single emission
Net weight	0.1 lbs
Electrostatic discharge protection	No
Surge protection	No
Optics technology	F.O.L.
Product technological characteristics	TVS
Ordinary temperature on the glass	104 °F

Finishing casing	
Material	Die-cast Aluminum EN AB - 46100
Color	Embossed white RAL 9003
Process	Powder coating

Finishing diffuser	
Material	UV Resistant Polycarbonate
Color	transparent

Finishing radiator	
Material	Die-cast Aluminum EN AB - 46100
Process	Tumbling

Cables Electrification	
Cable connector	No

**Notes:**

---



---



---



---

Downlights | 1 x powerLED 2 W | CRI 90 | 2700K | Flood | Embossed white RAL 9003 |  
 Damp location | 630mA | Base  
**LL-E90814-M-30**

Single emission downlights for indoor application. The super warm LED light source with a flood light distribution is composed of 1 powered LEDs with CCT of 2700 K and a CRI 90; the source luminous flux is 157 lm, with a 78.5 lm/W nominal luminous efficacy.

The device body is made of die-cast aluminium en ab - 46100 and features a embossed white ral 9003 finish, processed by means of powder coating; the diffuser is made of uv resistant polycarbonate. The ingress protection degree is IP44; the total weight is of 0.104 lbs.

The total absorbed power is 2 W. The power supply cable is included and features a 0.558 ft lenght.

and can be ceiling-mounted, with a 1.811 in diameter hole (in plasterboard).

Compliant with the EN 60598-1 standard and its specific provisions.

### Energy efficiency class

This product contains a light source of energy efficiency class F.

### Led features

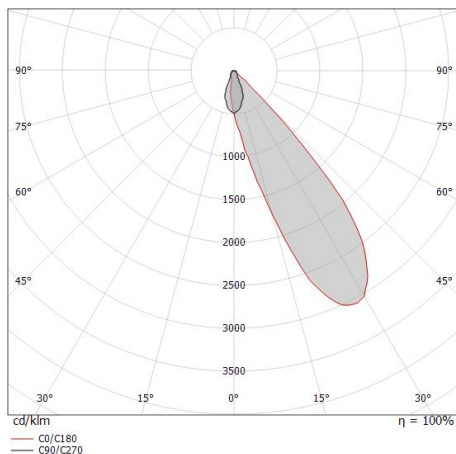
Light Output Ratio (LOR)	48 %
Source lumens	157 lm
Delivered lumens	76 lm
Power	2 W
Luminaire efficacy	38 lm/W
Color temperature	2700 K
Standard Deviation of Colour Matching	5 Step MacAdam
Color rendering index	90 Ra

### LED Life / Failure Ratio

L70 B20 C0 214455h (at Tj 60 Ta 25 )

### OPTICAL

Light distribution symmetry	Symmetrical 2
C90/C270 optics	45°



Distance [m]	Cone diameter [m]	E(0°) E(C90)	41.5°	lx
0.5	0.88	E(0°) E(C90)	41.5°	151 7
1.0	1.77	E(0°) E(C90)	41.5°	38 2
1.5	2.65	E(0°) E(C90)	41.5°	17 1
2.0	3.54	E(0°) E(C90)	41.5°	9 0
2.5	4.42	E(0°) E(C90)	41.5°	6 0
3.0	5.31	E(0°) E(C90)	41.5°	4 0

Distance [m] Cone diameter [m] Illuminance [lx]  
 — C90/C270 (Half-peak divergence: 83.0°)