

CM2084-D – JASPER™
2'X4' – Disinfecting White



Type: Project:

VisaLighting.com/products/Jasper

Fill in shaded boxes using information listed below

Order Code: **CM2084-D** **L40KD** -

MODEL

A SOURCE

B VOLTAGE

C SOURCE OPTION

D ACCENT STRIP FINISH

E OPTION(S)

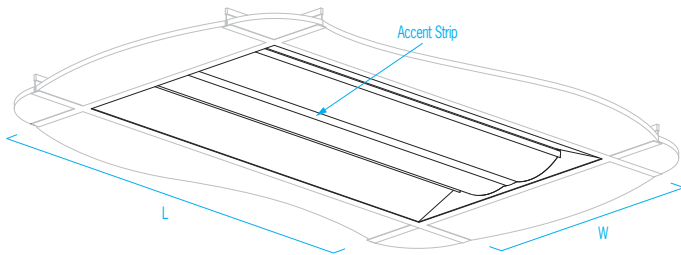


A recessed architectural troffer for 2x4 ceiling spaces, Jasper offers multiple sources, control and trim options for flexible illumination from practical design. Jasper also includes optional Eco Mode high-efficiency disinfection powered by Vital Vio technology.

DIMENSIONS

W = Width L = Length RD = Recessed Depth

L	47-3/4"	(1213 mm)
W	23-4/5"	(605 mm)
RD	3"	(76 mm)
RD	3-1/2"	(89 mm) (IEM or HDS option)



A SOURCE (Select one) B VOLTAGE

Dimmable 0-10V to 1%, Typical 85CRI
White Light Disinfection® powered by **vital vio**

Source	CCT Range	Delivered Lumens	Power (Watts)	Voltage
L40KD	4000K	3700	87	120V or 277V

C SOURCE OPTION (Select one)

- ⚠** Option availability may be interdependent with Voltage, Source or Other Options
- HDS** VioSafe™ Eco Mode: Safe, high efficiency disinfecting 58W source with violet light (2nd circuit) (Specify **120V** or **277V** option)
- IEM** 90-minute emergency battery pack supplying 10W of power to light sources (multiply fixture delivered lumens per watt by 10 watts for nominal emergency mode lumen output)

D DIMMING CONTROL OPTION (Select one)

⚠ Option availability may be interdependent with Voltage, Source or Other Options
Unit is 0-10V dimmable to 1% if no dimming option is selected

- DAI** Control via DALI protocol, dimming to minimum 1%
- LDE1** Lutron Hi-Lume 1% EcoSystem dimmable to 1% with soft-on and fade-to-black
- MLS2** Dual-Level switching (100%, 50%, off)
- OSDX** Osram DEXAL dimmable to 1%
- XSR** Dimming control (to 5%) via Phillips Xitanium Sensor Ready protocol

Options continued on Page 2



CM2084-D – JASPER

2'X4' – Disinfecting White



Options continued

E ACCENT STRIP FINISH (Select one)

See page 3 for color chart

Powder Coat Painted Finishes (Standard)

AG7038 Agate Grey	CVBL Cove Blue	GW9002 Grey White	PB1035 Pearl Beige
BMAT Bronze Matte	CW9001 Cream	HTHR Heather	RUST Rust
BRNZ Bronze	GLIM Glimmer	JB9005 Jet Black	SUNG Sungold
BSIL Blade Silver	GSIL Graphite Silver	OBRZ Old Bronze	TW9016 Traffic White

Metal Finishes (Premium)

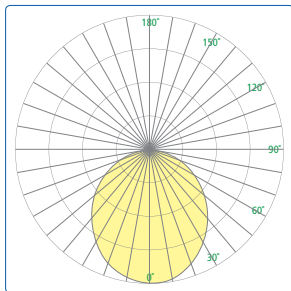
BA Brushed Aluminum	OBA Oil-Rubbed Bronze Alternative
BBA Brushed Brass Alternative	PRA Pewter Alternative
BCA Brushed Chrome Alternative	RBA Rustic Brass Alternative
BUA Brushed Copper Alternative	SNA Satin Nickel Alternative
BZA Brushed Bronze Alternative	

F OPTION(S) (Multiple Selections Allowed)

⚠ Option availability may be interdependent with Voltage, Source or Other Options

EQC	"Earthquake clip" t-bar mounting brackets (2 provided)
SRI	Drywall ceiling mounting kit
WHP	Pre-wired 6-foot long 18AWG flex conduit whip, conductors per fixture configuration (contact factory for details)

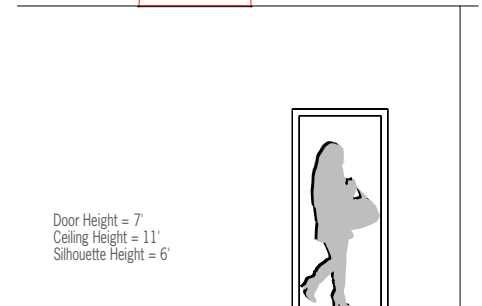
Photometrics



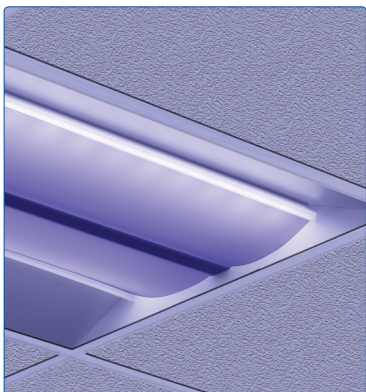
Technical Information

- Integral driver
- L40KD uses Vital Vio's White Light Disinfection source technology to safely, continuously disinfect surfaces over time
- HDS option uses high-efficiency VioSafe Eco Mode to boost surface disinfection with safe violet light when full illumination is not required. When HDS is in use, internal switching is used to automatically prevent white light source from turning on
- Low plenum depth enables use in "busy" recessed plenums or retrofit projects
- Mounts to standard 15/16", 9/16", or screw-slot grid ceiling systems
- Integral T-bar retaining clips
- Integral mounting points for suspension cables (by others) to building structure
- Not suitable for insulation contact
- Optional NEC Article 410 compliant "earthquake clips" (**EQC** option)
- Optional flange kit for mounting to drywall ceilings (**SRI** option)
- Extruded, frosted acrylic lens with diffusing optical film
- Die-formed enclosure
- Fabricated aluminum accent strip available in powder-coat, metal, and metal alternative finishes
- ETL listed for damp locations. Not suited for exterior applications

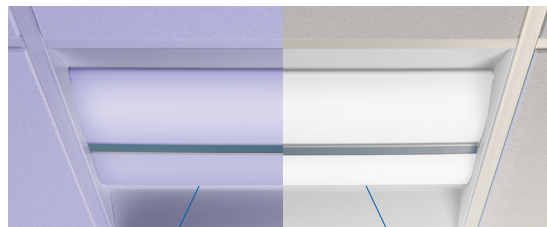
Relative Scale Drawing



Eco Mode Dinsinfecting (HDS) Option



Eco Mode vs. White Light Disinfection® Mode



Eco Mode, safe disinfection with higher intensity when continuous disinfection is critical but illumination is not required

White Light Disinfection Mode to safely and continuously disinfect surfaces over time

VioSafe Eco Mode

Eco Mode emits a high dosage of antimicrobial violet light wavelengths to kill bacteria on surfaces over time. While completely harmless to humans, plants, and animals, Eco Mode does not provide adequate illumination for most tasks, so it is best to use Eco Mode when the area is not in use. This option is a perfect maintenance mode for areas that could benefit from safe, continuous disinfection when unoccupied.

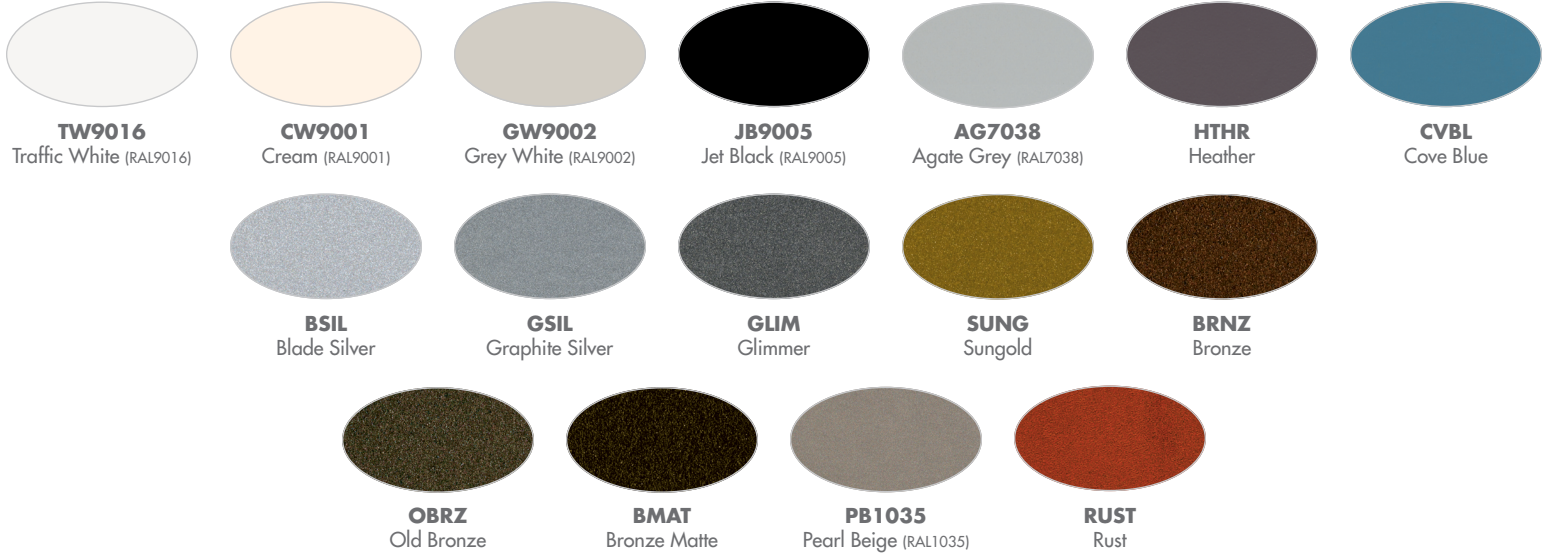
powered by **vital vio**

CM2084-D – JASPER
2'X4' – Disinfecting White

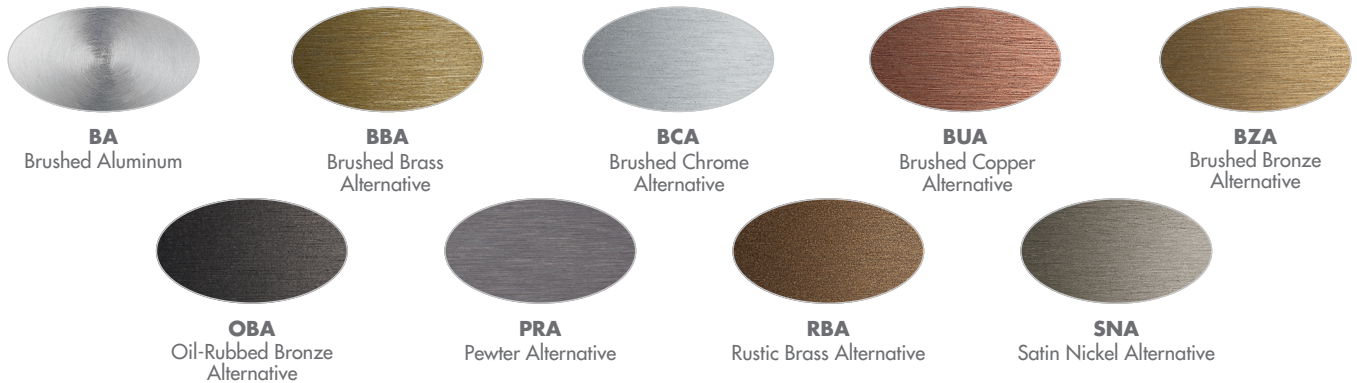


Specify color code when ordering. For accurate color matching, individual paint and finish samples are available upon request
For additional information see VisaLighting.com/finishes

Painted Finishes (Standard)



METAL FINISHES (PREMIUM)



This document contains information which is the property of Visa Lighting, and may not, in whole or in part, be duplicated, disclosed, or used for design or manufacturing purposes without the prior written permission of Visa Lighting. ©Visa Lighting. Design Modification Rights Reserved.