

Application

LED recessed ceiling luminaire with symmetrical narrow beam light distribution. The patent pending 'vortex reflector' rotates a parabolic reflector around the vertical axis to form a complex vortex shape. The vortex balances maximum efficiency with optimal glare control while eliminating shadows and artifacts in a uniquely square distribution.

Materials

Luminaire heat sink constructed of die-cast aluminum
 Trim ring constructed of painted aluminum, stainless steel or polished stainless steel
 Clear safety glass
 Reflector surface made of pure anodized aluminum
 Stainless steel screw clamps
 Galvanized steel rough in ceiling pan with through wiring box

NRTL listed to North American Standards, suitable for damp locations
 Weight: 4.4 lbs

Electrical

Operating voltage	120-277VAC
Minimum start temperature	-20° C
LED module wattage	14.4 W
System wattage	17.0 W
Controllability	0-10V dimming down to 0.1%
Color rendering index	Ra > 80
Luminaire lumens	1194 lumens (3000K)
Lifetime at Ta = 15° C	192,000 h (L70)
Lifetime at Ta = 25° C	108,000 h (L70)

LED color temperature

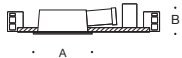
- 4000K - Product number + **K4**
- 3500K - Product number + **K35**
- 3000K - Product number + **K3**
- 2700K - Product number + **K27**

BEGA can supply you with suitable LED replacement modules for up to 20 years after the purchase of LED luminaires - see website for details

Finish

Select the desired trim ring material finish by using appropriate code number as suffix.

Available finishes	White	Code number .1
	Stainless steel	Code number .2
	Polished aluminum	Code number .3



Interior LED recessed ceiling luminaires · Vortex optic · symmetrical narrow beam

	LED	β	A	B
12 198.1	14.4 W	26°	5 1/2	5 1/2

β = Beam angle

BEGA 1000 BEGA Way, Carpinteria, CA 93013 (805) 684-0533 info@bega-us.com

Due to the dynamic nature of lighting products and the associated technologies, luminaire data on this sheet is subject to change at the discretion of BEGA North America. For the most current technical data, please refer to bega-us.com
 © copyright BEGA 2018 Updated 10/26/18

Type:
 BEGA Product:
 Project:
 Modified:

