



HPNLS-HO

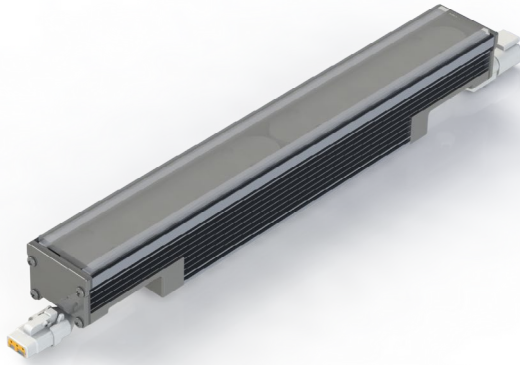
Line Voltage Linear LED Strip Fixture

Customer:

Date:

Type:

Project:



- Infrastructure Ready: Bridges, Airports, Tunnels, and Transit Stations
- Compact, variable light fixture for dry, damp or wet location use.
- Fixture comes in 6" increments (12" minimum).
- Many options in optics, color temperature and accessories.
- Variety of lenses and louvers.
- Boca Flasher's patented CleanDim® technology ensures even dimming from 0-100%.
- Uses standard line voltage dimmers.
- Fixtures are compatible with both forward and reverse phase dimming or can use Boca's SDS module for 0-10V, Dali or DMX Dimming.
- Powder coat housing with a durable finish making it weather and abrasion resistant.
- Total linear feet per power feed: 40ft @ 120V (16W Version).
- 3G vibration rating that conforms to standards by ANSI C136.31



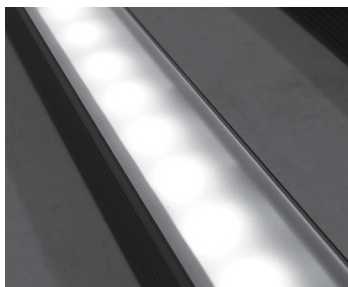
ANSI C136.31
COMPLIANT

VANDAL
RESISTANT

PRODUCT SPECIFICATIONS:

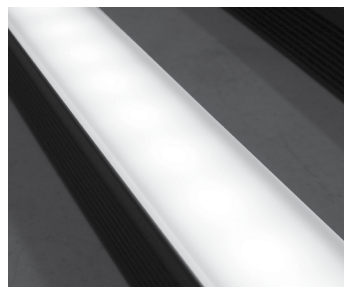
| HPNLS-HO | WATTAGE | COLOR OPTION | OPTIC | VOLTAGE | FINISH | LOCATION | MOUNTING | LENS | BODY OPTIONS |
|----------|-----------|--------------|---------|---------|--|-----------------|---------------------|-------------------------------------|--|
| | 5W ASHRAE | 2700K | 10° | 120V | W White | I Interior-IP50 | F Fixed | C Clear | HL Hexcell Louver |
| | 8W | 3000K | 30° | 277V | B Black | E Exterior-IP65 | S Swivel | D Diffused | SB Square Baffle |
| | 16W | 3500K | 60° | | G Gray | W Wet-IP68 | H Hinge | SI Satin Ice (Interior Use Only) | ASYM Asymmetric Baffle |
| | | 4000K | 10°x60° | | C Chromate Coat Underlayment with Marine Grade Finish | K IP69K | 3Arc 3" Arc Swivel | OP Opal White | SKB Kicker Baffle |
| | | 5000K | 30°x60° | | | | 6Arc 6" Arc Swivel | | HL* Hexcell Louver (Cannot be used with Satin Ice White or 120° optic) |
| | | Amber | 120° | | | | V Vandal Proof Clip | | |
| | | Red | | | | | | | |
| | | Green | | | | | | | |
| | | Blue | | | | | | | |

LENS OPTIONS:



Diffused*

- Interior or exterior use.
- 87% transmission.
- Lens is 1/8" (.09) thick, adds 1/16" to overall height of fixture. Call factory for more information.



Satin Ice White*

- Interior use only.
- Best for direct view use.
- 42% transmission.
- Lens is 1/4" (.25) thick, adds 1/8" to overall height of fixture. Call factory for more information.

HPNLS-HO

Line Voltage Linear LED Strip Fixture



TECHNICAL SPECIFICATIONS:

| | |
|-----------------------------|---|
| WATTAGE | 5W (ASHRAE) or 8W or 16W per linear ft. |
| INPUT VOLTAGE | 90-120V 230-277V |
| CONTROL | Leading Edge/Trailing Edge Line Dimmer, 0-10V, DALI, DMX* |
| LED SPACING | 1" on center |
| LENGTH | 12" - 96", 6" increments |
| TOTAL HEIGHT | 1.75" (not including clip) |
| TOTAL WIDTH | 1.68" |
| COLOR OPTIONS | 2700K, 3000K, 3500K, 4000K, 5000K, amber, red, green, blue |
| MOUNTING | Fixed, Swivel, Hinge 3" Arc or 6" Arc |
| AVAILABLE OPTICS | 10°, 30°, 60°, 10° x 60°, 30° x 60°, 120° |
| RATING | IP50, IP65, IP68, IP69K |
| COLOR RENDERING INDEX (CRI) | 90 + CRI |
| POWER CABLE | UL Standard 10 ft. |
| ENVIRONMENTAL | Operating temperature -40°F-140°F Ambient (-40°C-60°C)** Storage temperature -40°F-140°F Ambient indoor fixtures operation limited to =<50% relative humidity |

*Uses Boca SDS Module for 0-10V, Dali, or DMX Dimming.

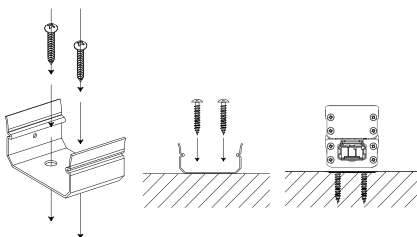
** Military spec available under special request-lead times may be impacted.

MOUNTING INFORMATION:

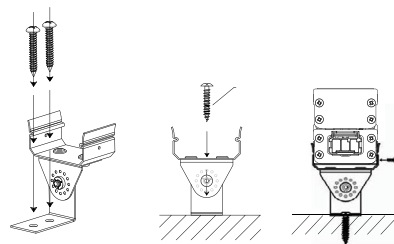
Fixtures 1-2ft, Place clips 0.5" from edge as shown.

Fixtures more than 2ft, Place clips 2" from edges as shown.

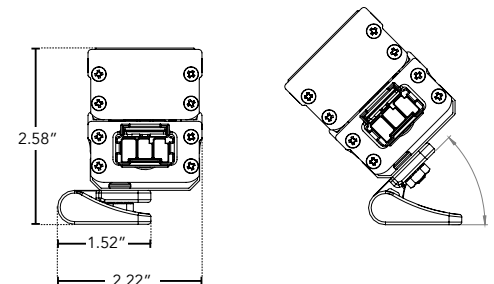
Fixed



Swivel



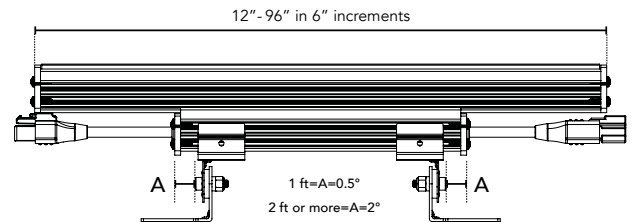
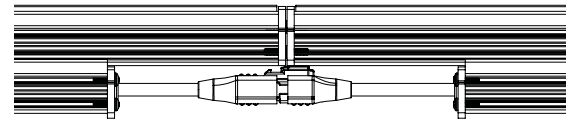
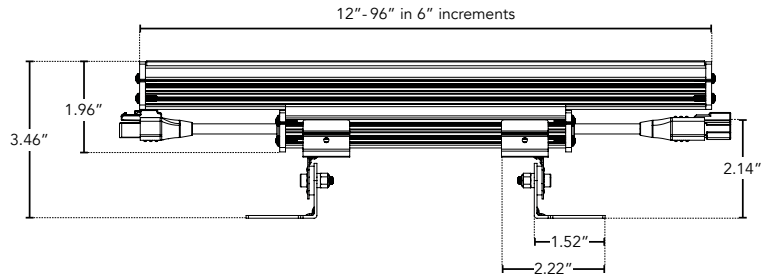
Hinge



DIMENSIONS:

- For vertical installation please contact the factory for specific mounting instructions.
- For installations above 4' please contact the factory.

Elevation View

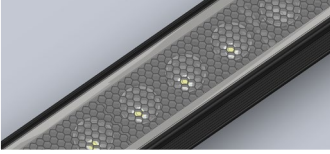


HPNLS-HO

Line Voltage Linear LED Strip Fixture



BODY CHOICES:



Hexcell Louver

- Economical solution to off axis glare issues.
- Louver is located flush to secondary optic, preventing unwanted striation.
- Louver cannot be utilized when no optic (120°) is specified.
- Louver is behind lens to ensure no damage is done during installation or after. This also ensures no dust build-up.
- Louver ships pre-fitted making on site fixture installation easy.
- No unsightly clips, screws, or brackets.
- Can be used with other baffles.
- Adds nothing to overall height.
- To specify add "HL" in options box.

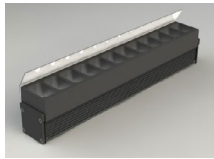
*Additional charges may apply.



SB - Square Baffle



ASYM - Asymmetric Baffle

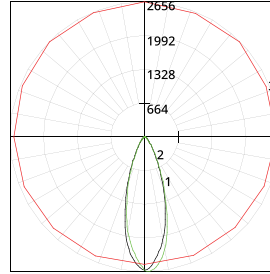


SKB - Sq. Kicker Baffle

Baffle Square Design

- Design cuts off light at 90°
- Baffles are lightweight black PVC with non-reflective surfaces to avoid glare from interior sections.
- One piece baffle slides onto the extruded housing making installation easy.
- SB only adds .75" to overall height
ASYM adds .90" to overall height
SKB adds 1.625" to overall height
- To specify add "SB" or "ASYM" for slanted version or "SKB" for kicker version in options box.

LUMINAIRE INFORMATION:



Fixture Type: 3500°K, 24° optic, 120V, 12"
Total lumen Output: 4840 Lumens per 4ft.
Luminaire Efficacy: 80.6 Lumens per watt
Maximum Candela: 2655.83
Located at Horizontal Angle: 90
Vertical Angle: 2

- #1 - Vertical Plane Through Horizontal Angles (0 - 180)
- #2 - Vertical Plane Through Horizontal Angles (90 - 270)
- #3 - Horizontal Cone Through Vertical Angle (2) (Through Max. Cd.)

For lux multiply fc by 10.76fc reading taken at 100% capacity (no dimming)

Characteristics:

| | |
|------------------------------|-----------------|
| LUMENS PER LAMP | 1203.5 (1 lamp) |
| TOTAL LAMP LUMENS | 1203.5 |
| LUMINAIRE LUMENS | 1204 |
| TOTAL LUMINAIRE EFFICIENCY | 100% |
| LUMEN EFFICACY RATING | 80 |
| TOTAL LUMINAIRE WATTS | 15.02 |
| BALLAST FACTOR | 1.00 |
| CIE TYPE | Direct |
| SPACING CRITERION (0-180) | 0.58 |
| SPACING CRITERION (90-270) | 0.62 |
| SPACING CRITERION (Diagonal) | 0.60 |
| BASIC LUMINOUS SHAPE | Rectangular |
| LUMINOUS LENGTH (0-180) | 0.31m |
| LUMINOUS WIDTH (90-270) | 0.04m |
| LUMINOUS HEIGHT | 0.00m |

HPNLS-HO

Line Voltage Linear LED Strip Fixture



LUMINAIRE INFORMATION:

| | Optic Angle(*) | 10 | 30 | 60 | 10x60 | 30x60 | D | SB-C(10°) | SB-D(10°) | ASYM-C(10°) | ASYM-D(10°) | HL-C(10°) | HL-D(10°) | OW(10°) | K(10°) |
|------------|----------------|-------|-------|-------|-------|-------|-------|-----------|-----------|-------------|-------------|-----------|-----------|---------|--------|
| CCT | 2200 | x0.93 | x0.93 | x0.93 | x0.93 | x0.93 | x0.93 | x0.93 | x0.93 | x0.93 | x0.93 | x0.93 | x0.93 | x0.93 | x0.93 |
| CCT | 2400 | x0.93 | x0.93 | x0.93 | x0.93 | x0.93 | x0.93 | x0.93 | x0.93 | x0.93 | x0.93 | x0.93 | x0.93 | x0.93 | x0.93 |
| CCT | 2700 | x0.96 | x0.96 | x0.96 | x0.96 | x0.96 | x0.96 | x0.96 | x0.96 | x0.96 | x0.96 | x0.96 | x0.96 | x0.96 | x0.96 |
| CCT | 3000 | x0.98 | x0.98 | x0.98 | x0.98 | x0.98 | x0.98 | x0.98 | x0.98 | x0.98 | x0.98 | x0.98 | x0.98 | x0.98 | x0.98 |
| CCT | 3500 | 1416 | 1332 | 1286 | 1225 | 1157 | 1247 | 1272 | 1120 | 1267 | 1110 | 1189 | 1046 | 725 | 1315 |
| CCT | 4000 | x1.15 | x1.15 | x1.15 | x1.15 | x1.15 | x1.15 | x1.15 | x1.15 | x1.15 | x1.15 | x1.15 | x1.15 | x1.15 | x1.15 |
| CCT | 5000 | x1.32 | x1.32 | x1.32 | x1.32 | x1.32 | x1.32 | x1.32 | x1.32 | x1.32 | x1.32 | x1.32 | x1.32 | x1.32 | x1.32 |
| | 5W | x0.36 | x0.36 | x0.36 | x0.36 | x0.36 | x0.36 | x0.36 | x0.36 | x0.36 | x0.36 | x0.36 | x0.36 | x0.36 | x0.36 |
| | 8W | x0.55 | x0.55 | x0.55 | x0.55 | x0.55 | x0.55 | x0.55 | x0.55 | x0.55 | x0.55 | x0.55 | x0.55 | x0.55 | x0.55 |
| | 10W | x0.62 | x0.62 | x0.62 | x0.62 | x0.62 | x0.62 | x0.62 | x0.62 | x0.62 | x0.62 | x0.62 | x0.62 | x0.62 | x0.62 |