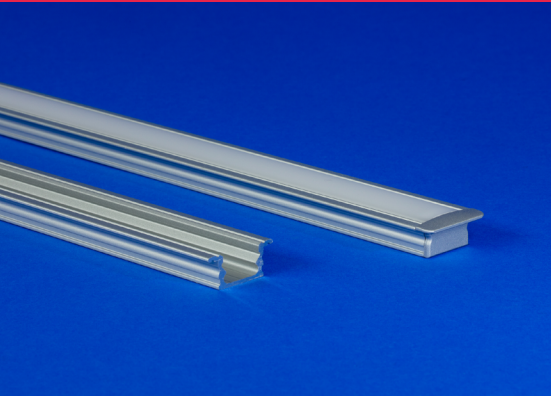


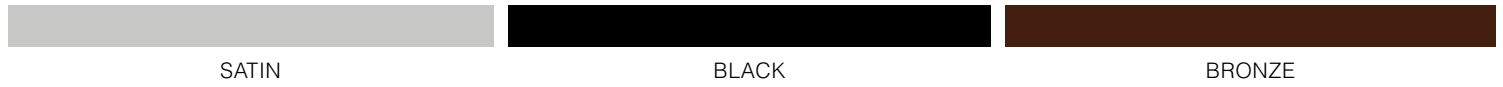
LATO

ALUMINUM EXTRUSION

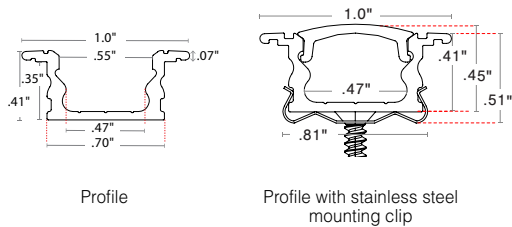


LATO is a shallow flanged LED extrusion designed for surface or recessed mounting. The LATO is available in satin, black, and bronze finishes, with clear, frosted, polar, and diffused lens options, or encapsulated in clear or translucent. Combine with WhiteOptics to increase light output between 5-14%.

Finish

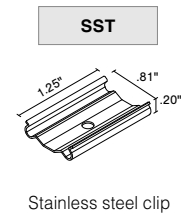


Dimensions



Mounting

2 clips provided for 4' or less; 4 clips provided for greater than 4'



Part Number Builder

Product	Finish	Mounting	Lens	Type	Finished Fixture Length (in)
<input type="text"/> ^ LATO LATO-WO	<input type="text"/> ^ ST BK BZ	<input type="text" value="SST"/>	<input type="text"/> ^ CL FR PR DF ENC/CL ENC/TL	<input type="text"/> ^ S1 S2 P1 P2 NI	<input type="text"/> ^ 1" increments from 1" - 98.43" Tolerance +0.0"/-0.5"

- If selecting WhiteOptics option, select **LATO-WO** for Product

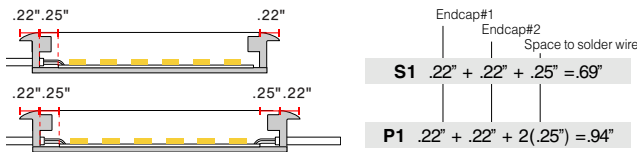
- Field modifications must comply with Q-Tran's installation methods otherwise warranty is null & void
- UL Listed when assembled with STRIP LEDs at Q-Tran
- Recess mount with adhesive only
- Suitable for installation in the storage area of a clothes closet when assembled as a fixture at Q-Tran facility (Not applicable for encapsulation or LED strips exceeding 4W/ft)
- UL 2108: Type IC recessed inherently protected
- IK10 rated when encapsulation is chosen



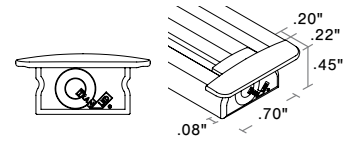
Compatible Strips

	STATIC WHITE (SW)	STATIC WHITE INDIVIDUALLY ADDRESSABLE (SW-IA)	STATIC WHITE STOCKING DISTRIBUTOR (SD-SW)	STATIC WHITE HIGH EFFICACY (SW-HE)	STATIC WHITE HIGH EFFICACY PLUS (SW-HE+)	DYNAMIC WHITE (DW)	DYNAMIC WHITE HIGH EFFICACY (DW-HE)	STATIC COLOR (SC)	WARM DIM (WD)	RGB	RGBW	RGBW HIGH EFFICACY (RGBW-HE)
	1.5W/ft 3.0W/ft 4.0W/ft 5.0W/ft 6.0W/ft	5.0W/ft	2.0W/ft 4.0W/ft 6.0W/ft	1.5W/ft 3.0W/ft 6.0W/ft 9.0W/ft	3.0W/ft 6.0W/ft	6.0W/ft	3.0W/ft 5.0W/ft 8.0W/ft	5.0W/ft	6.0W/ft	6.0W/ft	6.0W/ft	4.0W/ft 8.0W/ft
DRY	✓	✓	✓	✓	✓	✓	✓	✓	✓	✓		✓
DMP	✓			Not compatible with 9.0		✓	Not compatible with 8.0	✓		✓		Not compatible with 8.0
ENC	✓			Not compatible with 9.0		✓	Not compatible with 8.0	✓		✓		Not compatible with 8.0
WET	✓		✓					✓				

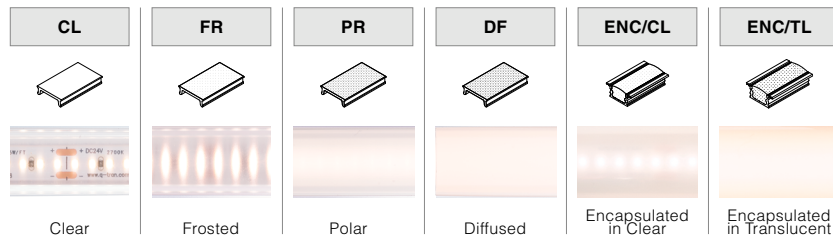
Length (in) Add to nominal LED length for fixture length



End Caps



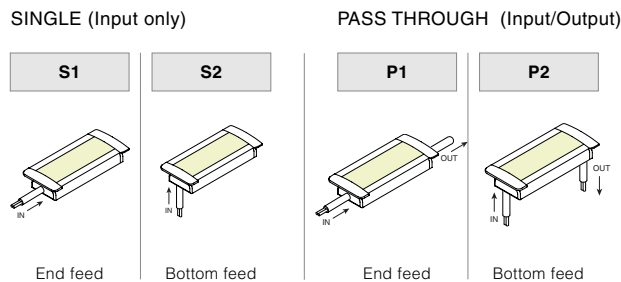
Lens with LED visibility



WhiteOptics Photometrics [Calculated L70(6k) - 70000 hours] Tested with SW24/5.0-DRY-30

	LATO LM/FT		LATO-WO LM/FT		LATO-WO Lumen Increase	
	Satin	Black/Bronze	Satin	Black/Bronze	Satin	Black/Bronze
Clear	374	328	393	352	5%	7%
Frosted	338	298	356	324	5%	9%
Polar	331	276	346	307	5%	11%
Diffused	287	235	305	268	6%	14%

Type



Cut Off

