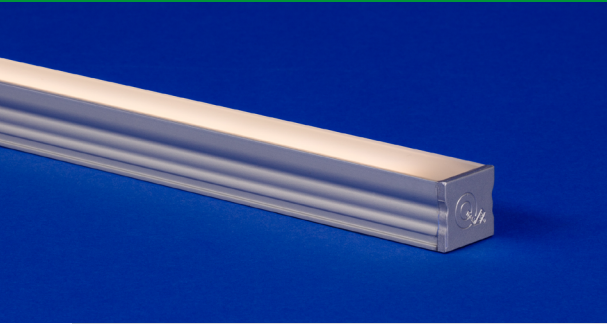


TORQ-ENCAPSULATED (03) Linear Fixtures



TORQ, our most popular LED extrusion for surface mounted installations, is now available as a fully assembled fixture. TORQ Encapsulated is available in satin, black, and bronze finishes and features high quality LED strips encapsulated in a rigid extrusion providing a robust fixture for various environments.

Part Number Builder

Static White



Product	W/FT	CCT	Rated	Efficiency	Lens	Input/Output	Connector/Wire In	Connector/Wire Out	Wire Color	Wire Type	Mounting	Finish	Length* (in)
TQ3SW			ENC										
Voltage: 24 VDC	1.5 3.0 4.0 5.0	24 27 30 35 40	ENC (IP67)	STD Standard WO WhiteOptics	CL TL	S1 S2 S3 S4	BW BRL CON6 CON24	CLS	WH BK N/A	CL2 CL2P N/A	SST MG	ST BK BZ	
Typical lumens at 5.0W/ft with CL at 3000K: 291 lm/ft						Single (Closed exit)							
						P1 P2 P3 P4	BW BRL CON6 CON24	BW BRL CON6 CON24					
						Pass through							

*Available in 1" increments, maximum length of 98.43" not including end caps. Tolerance +0.0"/-0.5. Minimum fixture length 6".

Static White High Efficacy



Product	W/FT	CCT	Rated	Efficiency	Lens	Input/Output	Connector/Wire In	Connector/Wire Out	Wire Color	Wire Type	Mounting	Finish	Length* (in)
TQ3SW			ENC										
Voltage: 24 VDC	1.5HE 3.0HE 6.0HE	24 27 30 35 40	ENC (IP67)	STD Standard WO WhiteOptics	CL TL	S1 S2 S3 S4	BW BRL CON6 CON24	CLS	WH BK N/A	CL2 CL2P N/A	SST MG	ST BK BZ	
Typical lumens at 6.0W/ft with CL at 3000K: 493 lm/ft						Single (Closed exit)							
						P1 P2 P3 P4	BW BRL CON6 CON24	BW BRL CON6 CON24					

*Available in 2" increments, maximum length of 98.43" not including end caps. Tolerance +0.0"/-0.5. Minimum fixture length 6".

- If selecting **BRL**, select N/A for wire color and type
- **BW** comes in standard 24" - request custom length (Max 120") by writing it in inches next to "BW" in the order code box (ex. BW48)
- **Connector/Wire In or Out** not needed to specify product. Standard configuration is Type S1, Connector/Wire In: BW & Connector/Wire Out: CLS
- Specify **CL2P** for plenum rated wire

- 5 year warranty
- Field modifications void warranty
- Data subject to change, all data has +/- 5% tolerance
- Compatible for use with Q-Tran power supplies
- IK10 rated

TORQ-ENCAPSULATED (03) Linear Fixtures



Dynamic White



Product	W/FT	CCT	Rated	Efficiency	Lens	Input/ Output	Connector/ Wire In	Connector/ Wire Out	Wire Color	Wire Type	Mounting	Finish	Length* (in)
TQ3DW	6.0	24/30	ENC										
Voltage: 24 VDC	6.0	24/30	ENC (IP67)	STD Standard WO WhiteOptics	CL TL	S1 S2 S3 S4	BW CON6 CON24	CLS	WH BK	CL2 CL2P	SST MG	ST BK BZ	
Typical lumens at 6.0W/ft with CL at 3000K: 94 lm/ft						Single (Closed exit)	P1 P2 P3 P4	BW CON6 CON24	BW CON6 CON24				
						Pass through							

*Available in 2" increments, maximum length of 98.43" not including end caps. Tolerance +0.0"/-0.5. Minimum fixture length 6".

Dynamic White High Efficacy



Product	W/FT	CCT	Rated	Efficiency	Lens	Input/ Output	Connector/ Wire In	Connector/ Wire Out	Wire Color	Wire Type	Mounting	Finish	Length* (in)
TQ3DW			ENC										
Voltage: 24 VDC	3.0HE 5.0HE	24/30 27/40	ENC (IP67)	STD Standard WO WhiteOptics	CL TL	S1 S2 S3 S4	BW BRL CON6 CON24	CLS	WH BK N/A	CL2 CL2P N/A	SST MG	ST BK BZ	
Typical lumens at 5.0W/ft with CL lens at 3000K: 180 lm/ft						Single (Closed exit)	P1 P2 P3 P4	BW BRL CON6 CON24	BW BRL CON6 CON24				
						Pass through							

*Available in 2" increments, maximum length of 98.43" not including end caps. Tolerance +0.0"/-0.5. Minimum fixture length 6".

Static Color



Product	W/FT	CCT	Rated	Efficiency	Lens	Input/ Output	Connector/ Wire In	Connector/ Wire Out	Wire Color	Wire Type	Mounting	Finish	Length* (in)
TQ3SC	5.0		ENC										
Voltage: 24 VDC	5.0	GR BL RD AB	ENC (IP67)	STD Standard WO WhiteOptics	CL TL	S1 S2 S3 S4	BW BRL CON6 CON24	CLS	WH BK N/A	CL2 CL2P N/A	SST MG	ST BK BZ	
Typical lumens at 5.0W/ft with CL in green: 360 lm/ft						Single (Closed exit)	P1 P2 P3 P4	BW BRL CON6 CON24	BW BRL CON6 CON24				
						Pass through							

*Available in 2" increments, maximum length of 98.43" not including end caps. Tolerance +0.0"/-0.5. Minimum fixture length 6".

- If selecting **BRL**, select N/A for wire color and type
- **BW** comes in standard 24"- request custom length (Max 120") by writing it in inches next to "BW" in the order code box (ex. BW48)
- **Connector/Wire In or Out** not needed to specify product. Standard configuration is Type S1, Connector/Wire In: BW & Connector/Wire Out: CLS
- Specify **CL2P** for plenum rated wire

- 5 year warranty
- Field modifications void warranty
- Data subject to change, all data has +/- 5% tolerance
- Compatible for use with Q-Tran power supplies
- Florida Fish and Wildlife Conservation Commission (FWC) rated Strips: DRY and WET rated, Red and Amber
- IK10 rated

TORQ-ENCAPSULATED (03) Linear Fixtures



RGB **5 YEAR WARRANTY**

Product	W/FT	CCT	Rated	Efficiency	Lens	Input/ Output	Connector/ Wire In	Connector/ Wire Out	Wire Color	Wire Type	Mounting	Finish	Length* (in)
TQ3RGB	6.0	RGB	ENC										
Voltage: 24 VDC	6.0	RGB	ENC (IP67)		CL TL	S1 S2 S3 S4 Single (Closed exit)	BW CON6 CON24	CLS	WH BK	CL2 CL2P	SST MG	ST BK BZ	
Typical lumens at 6.0W/ft with CL in green: 129 lm/ft			STD Standard WO WhiteOptics	P1 P2 P3 P4 Pass through									

*Available in 2" increments, maximum length of 98.43" not including end caps. Tolerance +0.0"/-0.5. Minimum fixture length 6".

RGBW High Efficacy **5 YEAR WARRANTY**

Product	W/FT	CCT	Rated	Efficiency	Lens	Input/ Output	Connector/ Wire In	Connector/ Wire Out	Wire Color	Wire Type	Mounting	Finish	Length* (in)
TQ3RGBW	4.0HE		ENC										
Voltage: 24 VDC	4.0HE	27 30 35 40	ENC (IP67)		CL TL	S1 S2 S3 S4 Single (Closed exit)	BW CON6 CON24	CLS	WH BK	CL2 CL2P	SST MG	ST BK BZ	
Typical lumens at 4.0W/ft with CL lens at 3000K: 60 lm/ft		STD Standard WO WhiteOptics	P1 P2 P3 P4 Pass through	BW CON6 CON24									

*Available in 2" increments, maximum length of 98.43" not including end caps. Tolerance +0.0"/-0.5. Minimum fixture length 6".

- **BW** comes in standard 24"- request custom length (Max 120") by writing it in inches next to "BW" in the order code box (ex. BW48)
- **Connector/Wire In or Out** not needed to specify product. Standard configuration is Type S1, Connector/Wire In: BW & Connector/Wire Out: CLS
- Specify **CL2P** for plenum rated wire

- 5 year warranty
- Field modifications void warranty
- Data subject to change, all data has +/- 5% tolerance
- Compatible for use with Q-Tran power supplies
- IK10 rated

TORQ-ENCAPSULATED (03) Linear Fixtures



Technical Information

Static White [Calculated L70 = 30000 hrs]

Tested with TQ3SW-**-30-ENC-STD

	1.5W/FT	3.0W/FT	4.0W/FT	5.0W/FT
	LM/FT	LM/FT	LM/FT	LM/FT
CL	110	192	239	291
TL	91	159	198	241

Tested with TQ3SW-**-30-ENC-WO

	1.5W/FT	3.0W/FT	4.0W/FT	5.0W/FT
	LM/FT	LM/FT	LM/FT	LM/FT
CL	129	225	280	341
TL	114	198	246	300

Dynamic White High Efficacy

[Calculated L70 = 70000 hrs]

Tested with TQ1DW-**-30-DRY-STD

	3.0W/FT	5.0W/FT
	LM/FT	LM/FT
CL	114	180
TL	94	149

Tested with TQ1DW-6.0-**-DRY-WO

	3.0W/FT	5.0W/FT
	LM/FT	LM/FT
CL	134	211
TL	117	185

RGB [Calculated L70 = 55000 hrs]

Tested with TQ3RGB-6.0-RGB-ENC-STD

	Red	Green	Blue
	LM/FT	LM/FT	LM/FT
CL	64	129	36
TL	53	107	30

Tested with TQRGB-6.0-RGB-ENC-WO

	Red	Green	Blue
	LM/FT	LM/FT	LM/FT
CL	75	152	43
TL	66	133	38

Temperature Ratings Dependent on LED Strip W/FT

Light Engine (LED Strip)	W/FT	Minimum Limit (°F)	Maximum Limit (°F)
Static White	1.5	-4	138
	3.0	-4	124
	4.0	-4	115
	5.0	-4	108
Static White High-Efficacy	1.5HE	-4	152
	3.0HE	-4	140
	6.0HE	-4	118

Static White High Efficacy [Calculated L70 = 70000 hrs]

Tested with TQ3SW-**-30-ENC-STD

	1.5HEW/FT	3.0HEW/FT	6.0HEW/FT
	LM/FT	LM/FT	LM/FT
CL	142	260	493
TL	118	216	409

Tested with TQ3SW-**-30-ENC-WO

	1.5HEW/FT	3.0HEW/FT	6.0HEW/FT
	LM/FT	LM/FT	LM/FT
CL	167	305	578
TL	147	269	509

Static Color [Calculated L70 = 30000 hrs]

Tested with TQ3SC-5.0-**-ENC-STD

	Red	Green	Blue	Amber
	LM/FT	LM/FT	LM/FT	LM/FT
CL	67	360	93	60
TL	55	298	77	50

Tested with TQSC-5.0-**-ENC-WO

	Red	Green	Blue	Amber
	LM/FT	LM/FT	LM/FT	LM/FT
CL	78	422	110	71
TL	69	372	96	62

RGBW High Efficacy [Calculated L70 = 70000 hrs]

Tested with TQ1RGBW-4.0HE-30-DRY-STD

	Red	Green	Blue	3000K
	LM/FT	LM/FT	LM/FT	LM/FT
CL	26	98	21	60
TL	21	81	17	50

Tested with TQ1RGBW-4.0HE-30-DRY-WO

	Red	Green	Blue	3000K
	LM/FT	LM/FT	LM/FT	LM/FT
CL	30	115	25	71
TL	26	101	22	62

Dynamic White

[Calculated L70 = 70000 hrs]

Tested with TQ3DW-6.0-**-ENC-STD

	3000K
	LM/FT
CL	167
TL	138

Tested with TQ3DW-6.0-**-ENC-WO

	3000K
	LM/FT
CL	196
TL	172

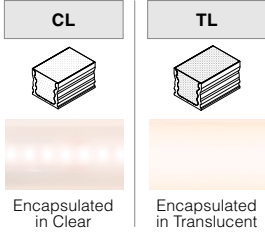
TORQ-ENCAPSULATED (03)

Linear Fixtures



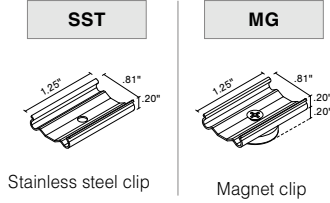
Lens

with LED visibility



Mounting

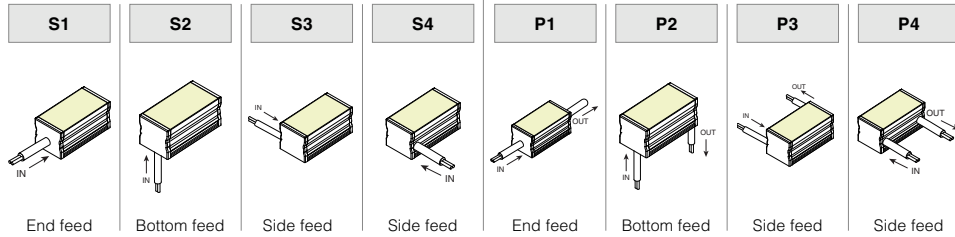
2 clips provided for 4' or less; 4 clips provided for greater than 4'



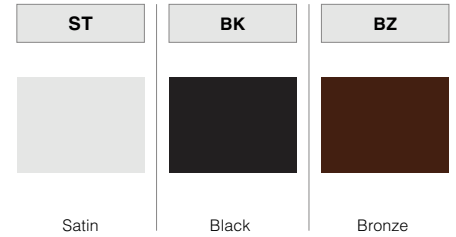
Type

SINGLE (Input only)

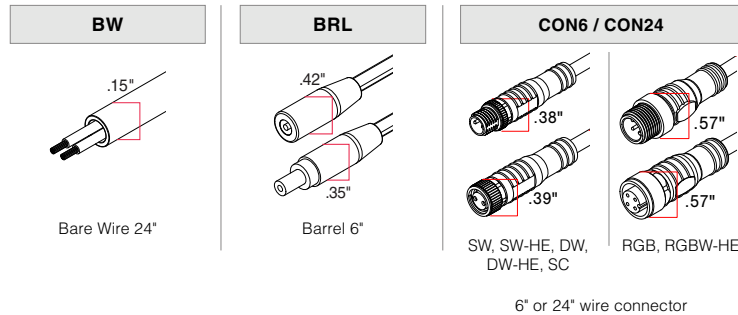
PASS THROUGH (Input/Output)



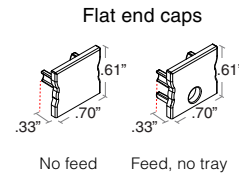
Finish



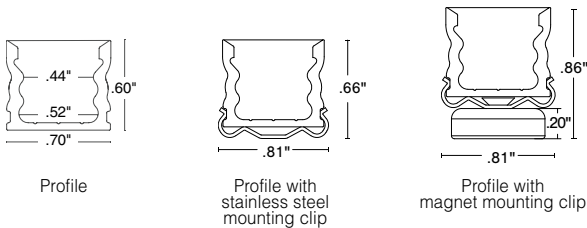
Connector/Wire – In/Out



End Caps



Dimensions



Length (in)

Based on selected light engine, add length adder to LED length for total fixture length

TORQ LENGTH ADDERS

LEDs that arent RGBW			RGBW		
IP Rating	Type	Length Adder	IP Rating	Type	Length Adder
ENC	S1	0.41"	ENC	S1	0.66"
	S2	0.41"		S2	0.66"
	S3	0.16"		S3	0.41"
	S4	0.16"		S4	0.41"
	P1	0.66"		P1	1.16"
	P2	0.66"		P2	1.16"
	P3	0.16"		P3	0.66"
	P4	0.16"		P4	0.66"