

SATURN

Direct View Inground LED Marker Light

Concept: Small scale direct view recessed ingrade marker light.

Materials: Milled anodized polished aluminum body.

Trim: Front made entirely of screen-printed, opal white 4mm thick glass. ^AFixture suitable for use in marine grade environments.

Source: High Efficiency LED.

Optic: Precision optic system with PMMA lenses for the wide flood version.

Mounting: Recessed mounting with installation sleeve (required).

Installation: Installation sleeve with adjustable collar for precision finished floor mounting or raised installation mounting. Pre-cabled with 2ft direct burial 18-2ga cable for connection to remote power supply.

Power Supply: Remote Class 2 120V-277VAC power supply required, ordered separately.

Wattage: 5W

Color Temperature: 3000K / 4000K

CRI: Ra84

Delivered Lumens: 3000K 4000K

Wide Flood 115° = 48Lm 51Lm

Lumen Maintenance (L70): 50,000hrs

Calculation for LED fixtures are based on measurements that comply with IES LM-80.

Voltage: 24V DC

IP: IP67

Load Rating: Resistant to static loads up to 4,496lbs in flush mounted cement and pavement installations.

Certifications: cULus Class 2 Wet Location Listed

Tested in accordance with LM-79-08

Energy efficient for California installations.

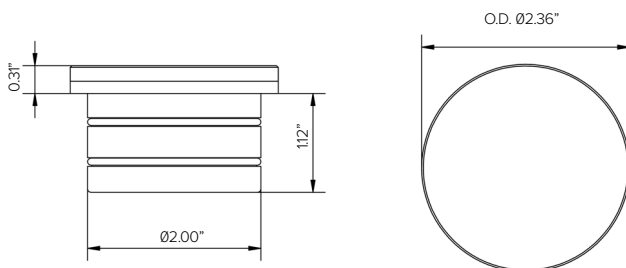
Warranty: 5 year limited warranty

^ANot to be in direct contact with salt for extended periods of time or used with corrosive agents.



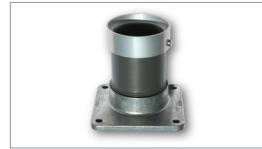
PRODUCT CODE	DRIVER	LENS	WATTAGE	COLOR TEMP	VOLTAGE	+	INSTALLATION	+	POWER SUPPLY
SAT – SATURN	RP – Remote Driver	WF – Wide Flood 115°	L1 – 5W	30 – 3000K 40 – 4000K	24 – 24VDC		Required (See Installation Options)		Required (See Power Supply Options)

Views

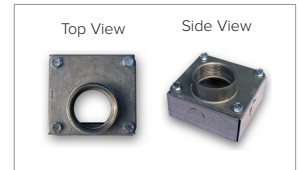


INSTALLATION (REQUIRED)	
1US3177S	2" installation sleeve with flush mount collar. Tube with threaded bottom end for height adjustment up to 3/4" for precision mounting.
1US3177M	3" installation sleeve with flush mount collar. Tube with threaded bottom end for height adjustment up to 3/4" for precision mounting. 2" field cut allowance.
1US3177L	6" installation sleeve with flush mount collar. Tube with threaded bottom end for height adjustment up to 3/4" for precision mounting. 2" field cut allowance.
1US3177X	9" installation sleeve with flush mount collar. Tube with threaded bottom end for height adjustment up to 3/4" for precision mounting. 2" field cut allowance.

INSTALLATION (OPTIONAL)	
1US3177HB	HUB with 3/4" height adjustability for field leveling mounted on 3-3/4" square j-box cover. Optional for use of sleeve only.
1US3177BX	3-1/2" x 3-4/4" installation J-box. Aluminum with 2ea 1/2" and 2ea 3/4" knockouts. Optional for use with HUB only.

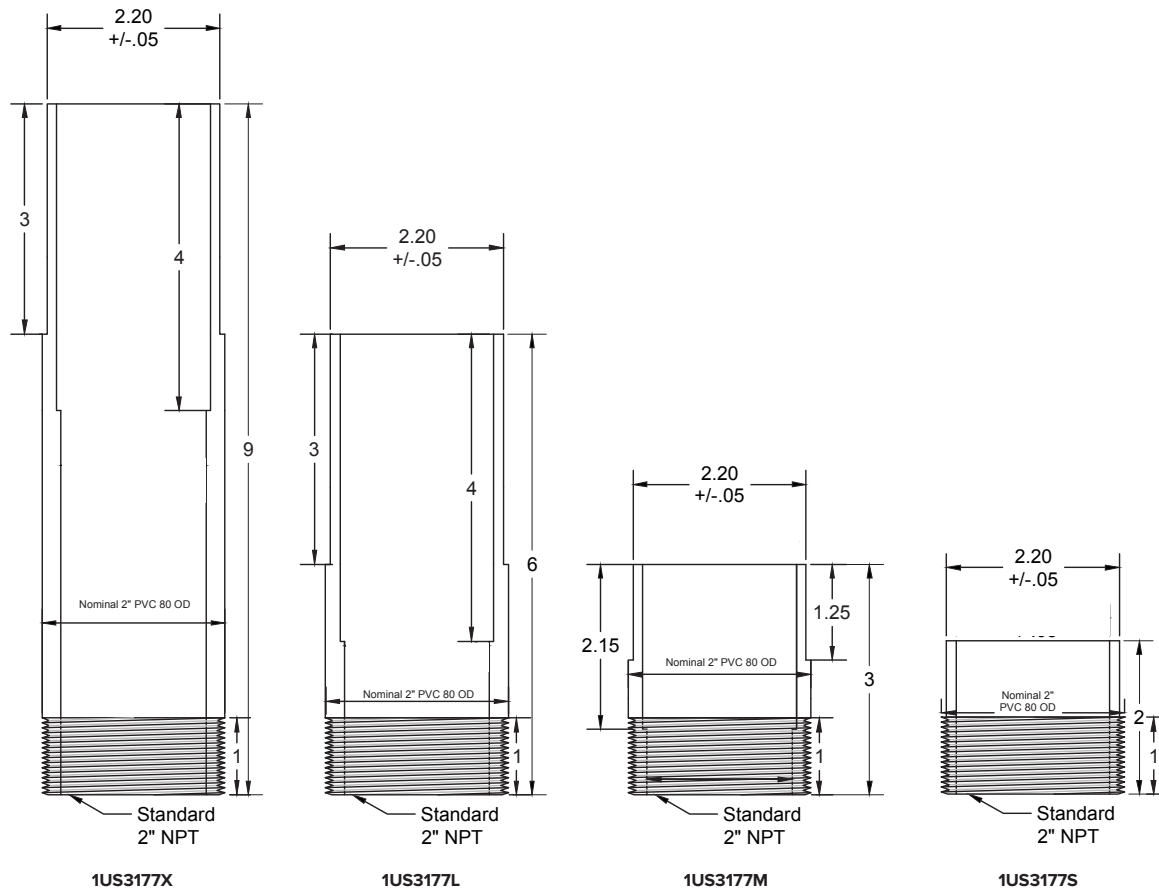


Installation Sleeve with HUB

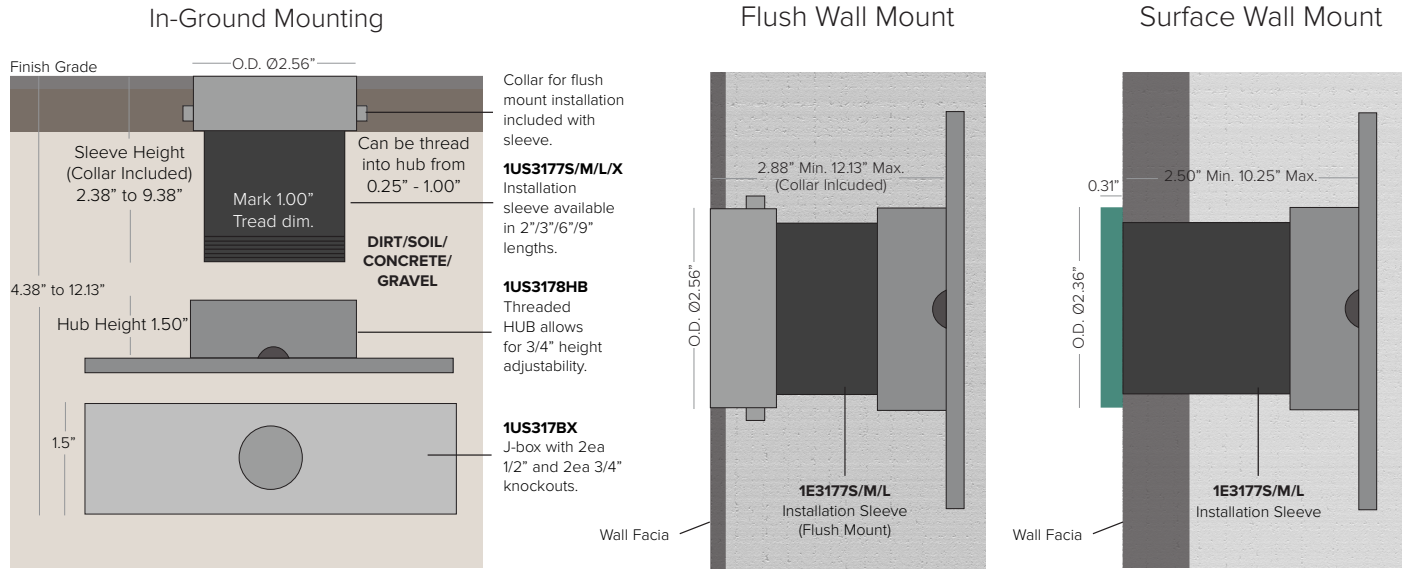


J-box (1US3177BX)

Installation Sleeves



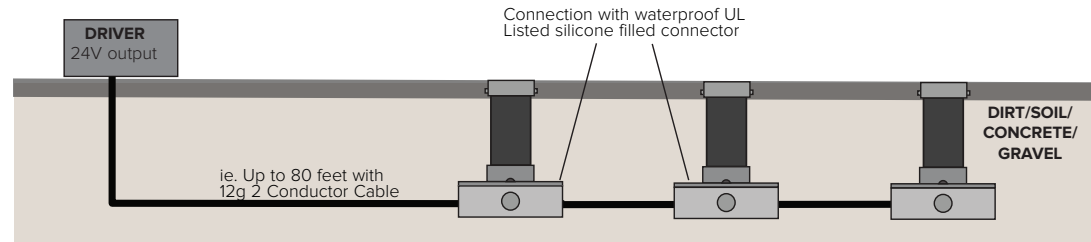
Installation Diagram



Overall Heights

- 2" Installation Sleeve = 4.38" Min to 5.13" Max (Collar Included)
- 3" Installation Sleeve = 5.38" Min to 6.13" Max (Collar Included)
- 6" Installation Sleeve = 8.38" Min to 9.13" Max (Collar Included)
- 9" Installation Sleeve = 11.38" Min to 12.13" Max (Collar Included)

Wiring Diagram



NOTE: Low voltage outdoor landscape wiring to be installed by a certified electrician per local building requirements, max 4A 96W circuit.

Power Supply (REQUIRED)	Type	Wattage	Input/Output Voltage	Dimmable	IP Rating	Output	Dimensions
DMLE301242UD	EMCOD MLE-UD ELECTRONIC DRIVER WITH WIRING COMPARTMENT.	30W	120-277V / 24V	FWD / REV PHASE / TRIAC / 0-10V / PWM	NEMA3R ENCLOSURE	UL CLASS 2	4.47" X 6.79" X 1.38"
DMLE601242UD	EMCOD MLE-UD ELECTRONIC DRIVER WITH WIRING COMPARTMENT.	60W	120-277V / 24V	FWD / REV PHASE / TRIAC / 0-10V / PWM	NEMA3R ENCLOSURE	UL CLASS 2	4.47" X 6.79" X 1.38"
DMLE961242UD	EMCOD MLE-UD ELECTRONIC DRIVER WITH WIRING COMPARTMENT.	96W	120-277V / 24V	FWD / REV PHASE / TRIAC / 0-10V / PWM	NEMA3R ENCLOSURE	UL CLASS 2	5.16" X 7.73" X 1.54"
DMLE1922242UD	EMCOD MLE-UD ELECTRONIC DRIVER WITH WIRING COMPARTMENT.	2X96W	120-277V / 24V	FWD / REV PHASE / TRIAC / 0-10V / PWM	NEMA3R ENCLOSURE	UL CLASS 2	5.04" X 10.94" X 1.81"
DMLE2882242UD	EMCOD MLE-UD ELECTRONIC DRIVER WITH WIRING COMPARTMENT.	3X96W	120-277V / 24V	FWD / REV PHASE / TRIAC / 0-10V / PWM	NEMA3R ENCLOSURE	UL CLASS 2	5.04" X 10.94" X 1.81"
DELV30124DJBX	MAGNITUDE SOLIDRIVE ELECTRONIC DRIVER WITH BUILT-IN JUNCTION BOX.	30W	120-277V / 24V	0-10V 1%	IP66	UL CLASS 2	12.1" X 2.36" X 1.4"
DELV30124D	MAGNITUDE SOLIDRIVE ELECTRONIC STANDALONE DRIVER. UL LISTED ENCLOSURE PROVIDED BY OTHERS.	30W	120-277V / 24V	0-10V 1%	IP66	UR CLASS 2	7.5" X 2.36" X 1.4"
DELV60124DJBX	MAGNITUDE SOLIDRIVE ELECTRONIC DRIVER WITH BUILT-IN JUNCTION BOX.	60W	120-277V / 24V	0-10V 1%	IP66	UL CLASS 2	12.1" X 2.36" X 1.4"
DELV60124D	MAGNITUDE SOLIDRIVE ELECTRONIC STANDALONE DRIVER. UL LISTED ENCLOSURE PROVIDED BY OTHERS.	60W	120-277V / 24V	0-10V 1%	IP66	UR CLASS 2	7.5" X 2.36" X 1.4"
DELV96124DJBX	MAGNITUDE SOLIDRIVE ELECTRONIC DRIVER WITH BUILT-IN JUNCTION BOX.	96W	120-277V / 24V	0-10V DIMMING 1%	IP66	UL CLASS 2	12.1" X 2.36" X 1.4"
DELV96124D	MAGNITUDE SOLIDRIVE ELECTRONIC STANDALONE DRIVER. UL LISTED ENCLOSURE PROVIDED BY OTHERS.	96W	120-277V / 24V	0-10V DIMMING 1%	IP66	UR CLASS 2	7.5" X 2.36" X 1.4"
PS060	LUTRON HI-LUME PREMIER 0.1% CONSTANT VOLTAGE DRIVER WITH UL LISTED ENCLOSURE	96W	UNIVERSAL 120-277 VAC	HI-LUM DIMMABLE 0.1%	IP20/NOM CERTIFIED	UL CLASS 2	10.5" x 5.5" x 2" ¹

¹ Dimensions include enclosure with mounting bracket.

* Constant voltage drivers 50/60HZ, voltage regulated with short circuit protection. Operating temperature -40 C- 80° C

* Installation of power supply must be compliant to Class 2 installation standards. Refer to NEC and local building code requirements.

* Consult factory for additional driver options (ie: DMX, DALI, wattage, size, shape, Lutron, ELDO, or others).

Max Fixtures Per Driver

Fixture Wattage	Driver Wattage							
	30W	60W	96W	90W	2X90W	3X90W	100W	2X100
5W	4	9	15	14	28	43	16	32

TARGETTI

SATURN

Photometry

IES files wattage and efficiency calculations based with supplied driver



		3000K	H(m)	D(m)	Emax(lx)
		Ra84		115°	
Fixture Power	5W	1	3.13	16	
Source Flux	638lm	2	6.27	4	
Fixture Flux	48lm	3	9.40	2	
Efficacy	10lm/W	4	12.53	1	
TS1051	Imax=26cd/klm	Imax	16cd	5	15.67



		4000K	H(m)	D(m)	Emax(lx)
		Ra84		115°	
Fixture Power	5W	1	3.13	18	
Source Flux	682lm	2	6.27	4	
Fixture Flux	51lm	3	9.40	2	
Efficacy	10lm/W	4	12.53	1	
TS1051	Imax=26cd/klm	Imax	18cd	5	15.67