

TARGETTI

SATURN MINI

Miniature Direct View Mini Inground LED Marker Light

Concept: Miniature direct view mini recessed ingrade marker light.

Materials: Milled anodized polished aluminum body.

Trim: Front made entirely of screen-printed, opal white 4mm thick glass. ^AFixture suitable for use in marine grade environments.

Optic: High Efficiency LED Emitter. Precision optic system with PMMA lenses for the wide flood version.

Mounting: Recessed mounting with installation sleeve (required).

Installation: Flush installation sleeve with adjustable collar for precision finished floor mounting or raised installation mounting. Pre-cabled with 2ft direct burial 18-2ga cable for connection to remote power supply.

Power Supply: Remote Class 2 120V-277VAC power supply required, ordered separately.

Wattage: 3W

Color Temperature: 3000K / 4000K

CRI: Ra84

Delivered Lumens: 3000K 4000K

Wide Flood 122° = 11Lm 12Lm

Lumen Maintenance (L70): 50,000hrs

Calculation for LED fixtures are based on measurements that comply with IES LM-80.

Voltage: 24VDC

IP Rating: IP67 rated

Load Rating: Resistant to static loads up to 4,496lbs in flush mounted cement and pavement installations.

Certifications: cULus Class 2 Wet Location Listed

Tested in accordance with LM-79-08

Energy efficient for California installations.

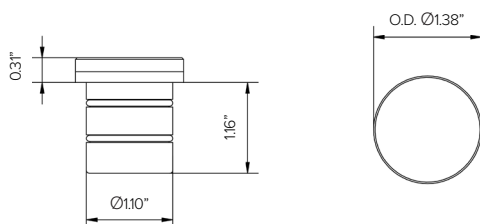
Warranty: 5 year limited warranty

^A*Not to be in direct contact with salt for extended periods of time or used with corrosive agents.*



PRODUCT CODE	DRIVER	LENS	WATTAGE	COLOR TEMP	VOLTAGE	+	INSTALLATION	+	POWER SUPPLY
SAM – SATURN Mini	RP – Remote Driver	WF – Wide Flood 122°	L1 – 3W	30 – 3000K	24 – 24VDC		Required (See Installation Options)		Required (See Power Supply Options)
			40 – 4000K						

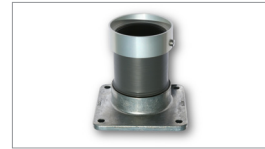
Views



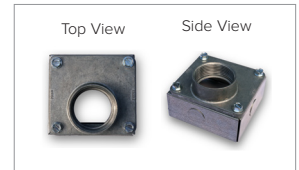
TARGETTI

SATURN MINI

INSTALLATION (REQUIRED)	
1US3178S	2" installation sleeve with flush mount collar. Tube with threaded bottom end for height adjustment up to 3/4" for precision mounting.
1US3178M	3" installation sleeve with flush mount collar. Tube with threaded bottom end for height adjustment up to 3/4" for precision mounting. 2" field cut allowance.
1US3178L	6" installation sleeve with flush mount collar. Tube with threaded bottom end for height adjustment up to 3/4" for precision mounting. 2" field cut allowance.
1US3178X	9" installation sleeve with flush mount collar. Tube with threaded bottom end for height adjustment up to 3/4" for precision mounting. 2" field cut allowance.



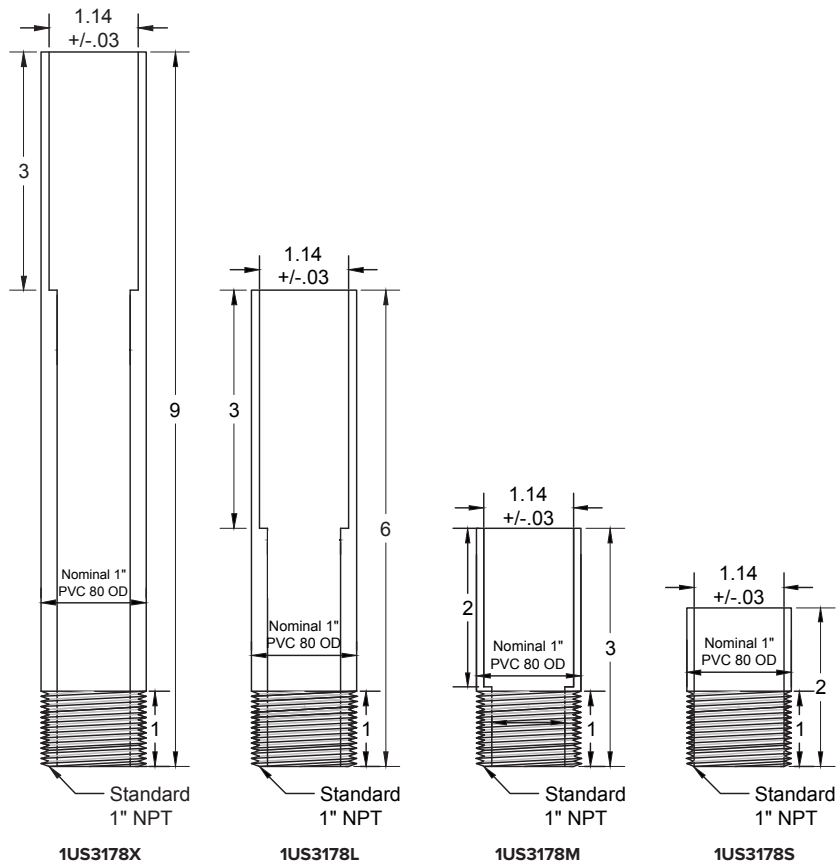
Installation Sleeve with HUB



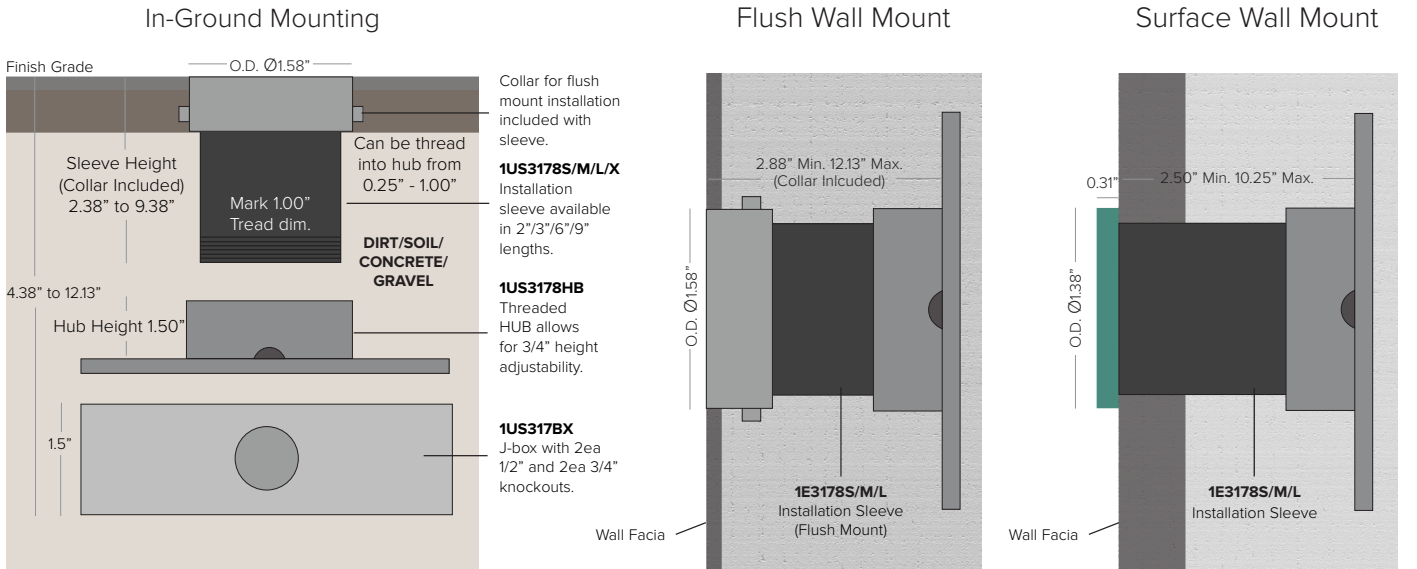
J-box (1US3178X)

INSTALLATION (OPTIONAL)	
1US3178HB	HUB with 3/4" height adjustability for field leveling mounted on 3-3/4" square j-box cover. Optional for use of sleeve only.
1US3178X	3-1/2" x 3-4/4" installation J-box. Aluminum with 2ea 1/2" and 2ea 3/4" knockouts. Optional for use with HUB only.

Installation Sleeves



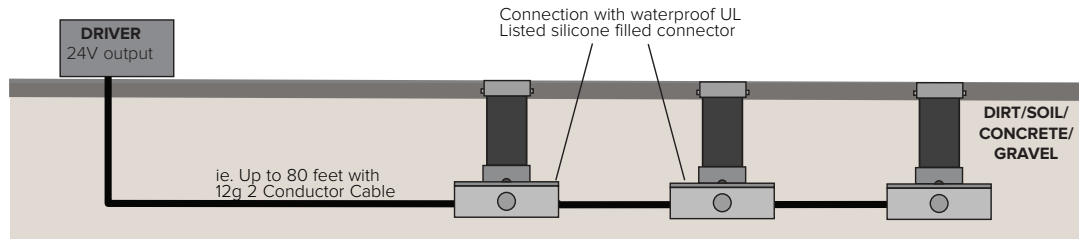
Installation Diagram



Overall Heights

- 2" Installation Sleeve = 4.38" Min to 5.13" Max (Collar Included)
- 3" Installation Sleeve = 5.38" Min to 6.13" Max (Collar Included)
- 6" Installation Sleeve = 8.38" Min to 9.13" Max (Collar Included)
- 9" Installation Sleeve = 11.38" Min to 12.13" Max (Collar Included)

Wiring Diagram



NOTE: Low voltage outdoor landscape wiring to be installed by a certified electrician per local building requirements, max 4A 96W circuit.

Power Supply (REQUIRED)	Type	Wattage	Input/Output Voltage	Dimmable	IP Rating	Output	Dimensions
DMLE301242UD	EMCOD MLE-UD ELECTRONIC DRIVER WITH WIRING COMPARTMENT.	30W	120-277V / 24V	FWD / REV PHASE / TRIAC / 0-10V / PWM	NEMA3R ENCLOSURE	UL CLASS 2	4.47" X 6.79" X 1.38"
DMLE601242UD	EMCOD MLE-UD ELECTRONIC DRIVER WITH WIRING COMPARTMENT.	60W	120-277V / 24V	FWD / REV PHASE / TRIAC / 0-10V / PWM	NEMA3R ENCLOSURE	UL CLASS 2	4.47" X 6.79" X 1.38"
DMLE961242UD	EMCOD MLE-UD ELECTRONIC DRIVER WITH WIRING COMPARTMENT.	96W	120-277V / 24V	FWD / REV PHASE / TRIAC / 0-10V / PWM	NEMA3R ENCLOSURE	UL CLASS 2	5.16" X 7.73" X 1.54"
DMLE1922242UD	EMCOD MLE-UD ELECTRONIC DRIVER WITH WIRING COMPARTMENT.	2X96W	120-277V / 24V	FWD / REV PHASE / TRIAC / 0-10V / PWM	NEMA3R ENCLOSURE	UL CLASS 2	5.04" X 10.94" X 1.81"
DMLE2882242UD	EMCOD MLE-UD ELECTRONIC DRIVER WITH WIRING COMPARTMENT.	3X96W	120-277V / 24V	FWD / REV PHASE / TRIAC / 0-10V / PWM	NEMA3R ENCLOSURE	UL CLASS 2	5.04" X 10.94" X 1.81"
DELV30124DJBX	MAGNITUDE SOLIDRIVE ELECTRONIC DRIVER WITH BUILT-IN JUNCTION BOX.	30W	120-277V / 24V	0-10V 1%	IP66	UL CLASS 2	12.1" X 2.36" X 1.4"
DELV30124D	MAGNITUDE SOLIDRIVE ELECTRONIC STANDALONE DRIVER. UL LISTED ENCLOSURE PROVIDED BY OTHERS.	30W	120-277V / 24V	0-10V 1%	IP66	UR CLASS 2	7.5" X 2.36" X 1.4"
DELV60124DJBX	MAGNITUDE SOLIDRIVE ELECTRONIC DRIVER WITH BUILT-IN JUNCTION BOX.	60W	120-277V / 24V	0-10V 1%	IP66	UL CLASS 2	12.1" X 2.36" X 1.4"
DELV60124D	MAGNITUDE SOLIDRIVE ELECTRONIC STANDALONE DRIVER. UL LISTED ENCLOSURE PROVIDED BY OTHERS.	60W	120-277V / 24V	0-10V 1%	IP66	UR CLASS 2	7.5" X 2.36" X 1.4"
DELV96124DJBX	MAGNITUDE SOLIDRIVE ELECTRONIC DRIVER WITH BUILT-IN JUNCTION BOX.	96W	120-277V / 24V	0-10V DIMMING 1%	IP66	UL CLASS 2	12.1" X 2.36" X 1.4"
DELV96124D	MAGNITUDE SOLIDRIVE ELECTRONIC STANDALONE DRIVER. UL LISTED ENCLOSURE PROVIDED BY OTHERS.	96W	120-277V / 24V	0-10V DIMMING 1%	IP66	UR CLASS 2	7.5" X 2.36" X 1.4"
PS060	LUTRON HI-LUME PREMIER 0.1% CONSTANT VOLTAGE DRIVER WITH UL LISTED ENCLOSURE	96W	UNIVERSAL 120-277 VAC	HI-LUM DIMMABLE 0.1%	IP20/NOM CERTIFIED	UL CLASS 2	10.5" x 5.5" x 2" ¹

¹ Dimensions include enclosure with mounting bracket.

* Constant voltage drivers 50/60HZ, voltage regulated with short circuit protection. Operating temperature -40 C- 80° C

* Installation of power supply must be compliant to Class 2 installation standards. Refer to NEC and local building code requirements.

* Consult factory for additional driver options (ie: DMX, DALI, wattage, size, shape, Lutron, ELDO, or others).

Max Fixtures Per Driver

Fixture Wattage	Driver Wattage								
	30W	60W	96W	90W	2X90W	3X90W	100W	2X100	
3W	8	16	25	24	48	72	26	53	

TARGETTI

SATURN MINI

Photometry

IES files wattage and efficiency calculations based with supplied driver



		3000K	H(m)	D(m)	Emax(lx)	
		Ra84		122°		
	Fixture Power	3W	1	3.59	4	
	Source Flux	353lm	2	7.18	1	
	Fixture Flux	11lm	3	10.77	0	
	Efficacy	4lm/W	4	14.36	0	
TS1052	Imax=10cd/klm	Imax	4cd	5	17.95	0



		4000K	H(m)	D(m)	Emax(lx)	
		Ra84		122°		
	Fixture Power	3W	1	3.59	4	
	Source Flux	378lm	2	7.18	1	
	Fixture Flux	12lm	3	10.77	0	
	Efficacy	4lm/W	4	14.36	0	
TS1052	Imax=10cd/klm	Imax	4cd	5	17.95	0