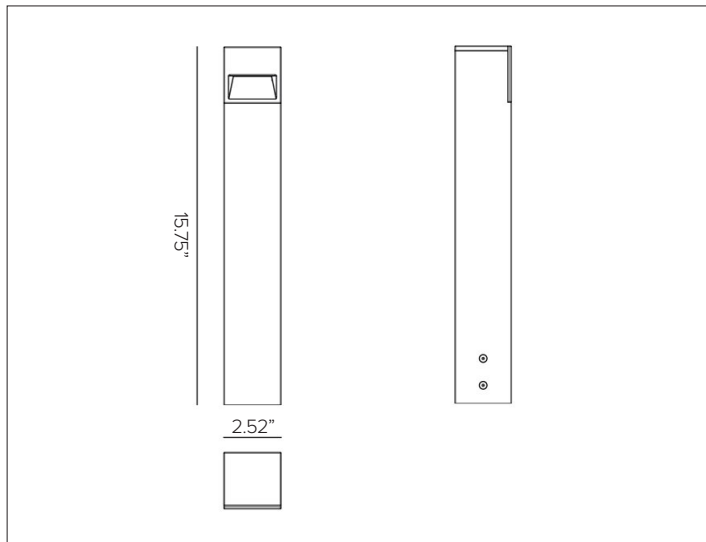


ZEDGE MINI BOLLARD

Miniature LED Bollard



ZEDGE MINI BOLLARD in Ferrite Dark Grey finish.



CONCEPT

Miniature LED bollard for outdoor applications.

MECHANICAL CHARACTERISTICS

Housing	15.75"H x 2.52"W
Materials	Die-cast powder coated aluminum fixture independently sealed LED housing and heat sink with anodized powder coated extruded aluminum post. Aesthetically pleasing with no visible hardware between fixture and post and clean fit seams between fixture and post.
Finish	Textured finish. <ul style="list-style-type: none"> ● Ferrite Dark Grey ● Heritage Brown ● Bronze ● Black ● White ● Sandstone Grey
Power Connection	Pre-cabled with 4' SJ00W 18-5 toolless IP68 quick disconnect cable.
Mounting	316L grade stainless steel base, anchor bolts supplied by others. Bollard body mounts to Concrete Pour or Surface Mount Plate, sold separately.
BUG	B0-U0-G0
Weight	3lbs
Protection	IP66
Impact	IK10

CERTIFICATIONS

cULus Wet Location Listed.
 Tested in accordance with LM-79-08.
 Compliant for California installations.
 IEC 62471
 RoHS3 EU 215/863

WARRANTY

5 year limited warranty

SUSTAINABILITY

Luminaire designed for disposal/recycling at end-of-life. Replaceable LED light source and control gear by a Targetti technician.

ELECTRICAL CHARACTERISTICS

Power Supply	Integral 4/1 smart driver (Non-Dimmable / 0-10V / Reverse Phase / Forward Phase).
Wattage	6W
Voltage	Universal Voltage 120-277V AC 50/60Hz

SOURCE

High Efficiency LED Board. CRI dependant based on version.

TM30	CCT (Nominal)	CRI	Rf	Rg	SDCM
ZEDGE MINI version	2700K	80	83	97.3	2
	3000K	80	82.9	97	2
	3500K	80	83.6	96.5	2
	4000K	80	82.6	95.7	2
<i>Ra90 available upon request</i>					
ZEDGE MINI HO version	2700K	90	90.9	100.1	2
	3000K	90	90.3	100.4	2
	3500K	90	83.6	96.5	2
	4000K	90	89.8	98.7	2

OPTIC

Uniform optical distribution and excellent visual comfort. Optical system is dependent version. FW version is comprised of polycarbonate opal lens. HO FW version is comprised of polycarbonate clear lens.

Beam	FW 56°X94°	HO FW 27°X63°
Delivered Lumens		
2700K	78Lm	166Lm
3000K	83Lm	176Lm
3500K	85Lm	181Lm
4000K	86Lm	182Lm
Efficacy	47Lm/W max. Refer to photometric graphs for specific values.	
Lifetime	L80/B10 72,000hrs at max TA +25°C	
Photobiological Classification	Low risk photobiological safety RG1	

ZEDGE MINI BOLLARD

SPECIFICATION INFORMATION

ZES								9
1	2	3	4	5	6	7	8	9

Ex: ZESB41FWFEL130 / 1E3741

REQUIRED

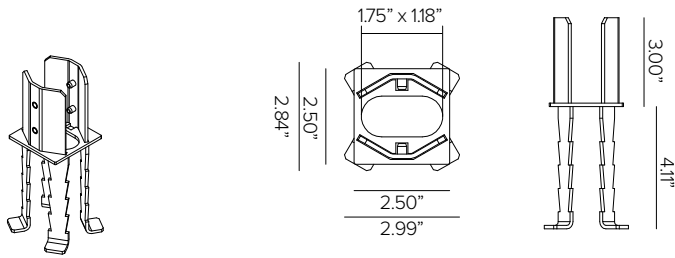
1 - PRODUCT CODE	2 - TYPE	3 - DRIVER	4 - FACEPLATE	5 - FINISH	6 - WATTAGE	7 - KELVIN
ZES — ZEDGE MINI	B — Bollard	41 — 4/1 Smart Dimming (Non-Dimming / 0-10V / Reverse Phase / Forward Phase)	FW — Floor Washer	FE — Ferrite Dark Grey HB — Heritage Brown BZ — Bronze WT — White BT — Black SG — Sandstone Grey RAL — Custom RAL	L1 — 6W	27 — 2700K 30 — 3000K 35 — 3500K 40 — 4000K
ZESHO — ZEDGE MINI HIGH OUTPUT						

8 - OPTIONAL	9 - MOUNTING
MG^A — Marine Grade	Concrete Pour See section for details Plate for Surface See section for details Mounting Base with Anchor Rods See section for details

^AMarine Grade is recommended for use in environments with occasional exposure to salt air, reclaimed water, fertilizers, chemical cleaners, or frequent pressure washing (steam) cleaning. Fixture housing complete with marine grade cathaphoresis suitable for use in marine grade environments. Not to be in direct contact with salt or corrosive agents for extended periods of time.

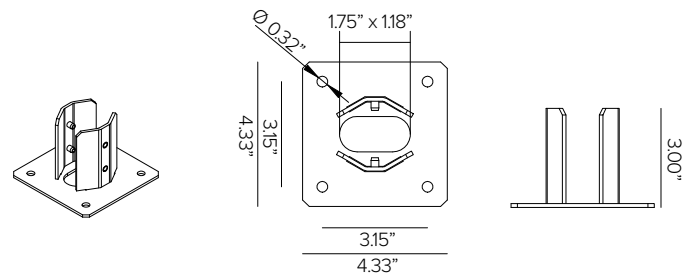
ZEDGE MINI BOLLARD

9 – MOUNTING (REQUIRED)



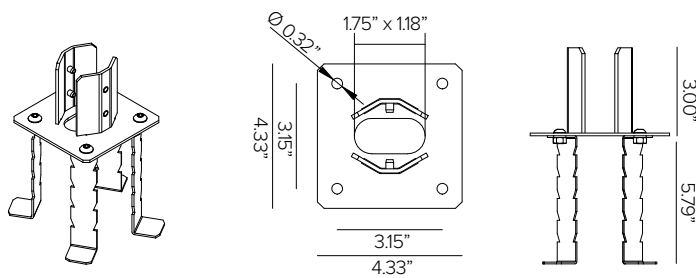
ZEDGE MINI BOLLARD AISI 316 stainless steel mounting base with fixing rods for concrete pour installation.

Part No. **1E3740**



ZEDGE MINI BOLLARD AISI 316 stainless steel plate for surface installation. Compatible with dowels to be inserted into 4ea holes.

Part No. **1E3741 (*)**



Powder coated mounting base with ground anchor fixing rods for installation in concrete. AISI 316 stainless steel. Mounting bolts included.

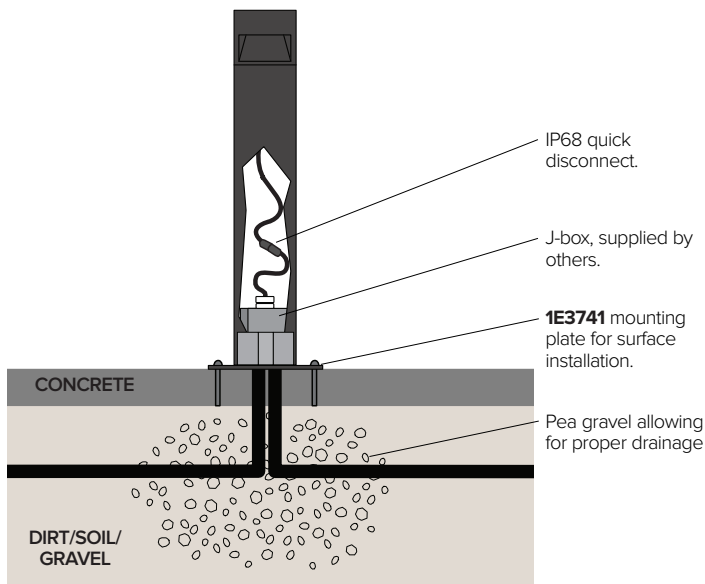
Part No. **1US3741 (*)**

- Ferrite Dark Grey (Default)
- Heritage Brown (HB)*
- Bronze (BZ)*
- White (WT)*
- Black (BT)*
- Sandstone Grey (SG)*

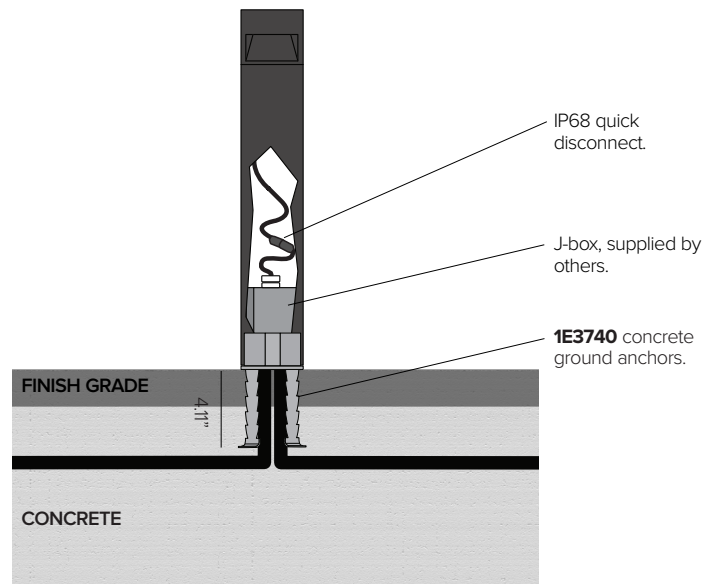
**Add suffix to end of number to identify finish (EX. 1E3741HB)*

INSTALLATION DIAGRAM

SURFACE INSTALLATION



CONCRETE POUR INSTALLATION



ZEDGE MINI BOLLARD

PHOTOMETRY

ZEDGE MINI

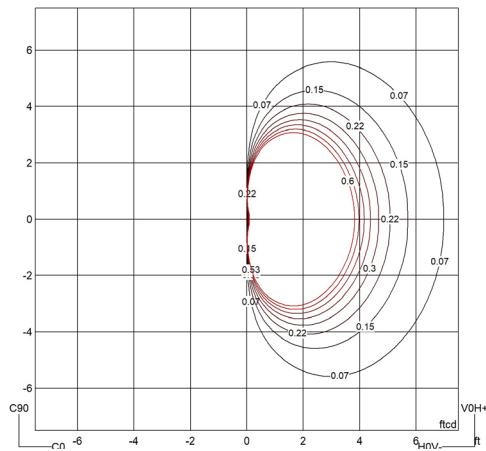
	2700K	H(m)	D1(m)	D2(m)	E _{max} (lx)		
	Ra80		56°	94°			
	Fixture Power	4W	1	2.59	2.40	44	
	Source Flux	608lm	2	5.19	4.79	11	
	Fixture Flux	78lm	3	7.78	7.19	5	
	Efficacy	20lm/W	4	10.37	9.59	3	
TS1177	I _{max} =90cd/klm	I _{max}	55cd	5	12.97	11.98	2

	3000K	H(m)	D1(m)	D2(m)	E _{max} (lx)		
	Ra80		56°	94°			
	Fixture Power	4W	1	2.59	2.40	47	
	Source Flux	645lm	2	5.19	4.79	12	
	Fixture Flux	83lm	3	7.78	7.19	5	
	Efficacy	21lm/W	4	10.37	9.59	3	
TS1177	I _{max} =90cd/klm	I _{max}	58cd	5	12.96	11.99	2

	3500K	H(m)	D1(m)	D2(m)	E _{max} (lx)		
	Ra80		56°	94°			
	Fixture Power	4W	1	2.59	2.40	48	
	Source Flux	662lm	2	5.19	4.79	12	
	Fixture Flux	85lm	3	7.78	7.19	5	
	Efficacy	22lm/W	4	10.37	9.59	3	
TS1177	I _{max} =90cd/klm	I _{max}	60cd	5	12.97	11.99	2

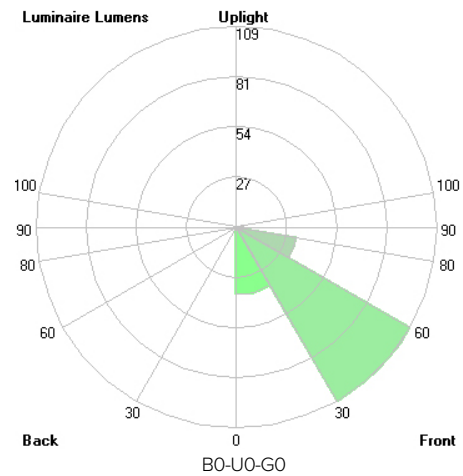
	4000K	H(m)	D1(m)	D2(m)	E _{max} (lx)		
	Ra80		56°	94°			
	Fixture Power	4W	1	2.59	2.40	48	
	Source Flux	666lm	2	5.19	4.79	12	
	Fixture Flux	86lm	3	7.78	7.19	5	
	Efficacy	22lm/W	4	10.37	9.59	3	
TS1177	I _{max} =90cd/klm	I _{max}	60cd	5	12.96	11.98	2

ISOLUX DIAGRAM



MOUNTING HEIGHT = 16"

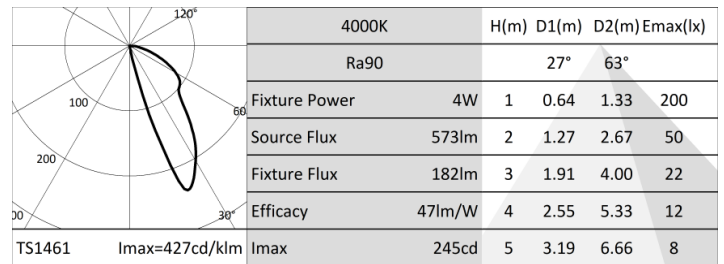
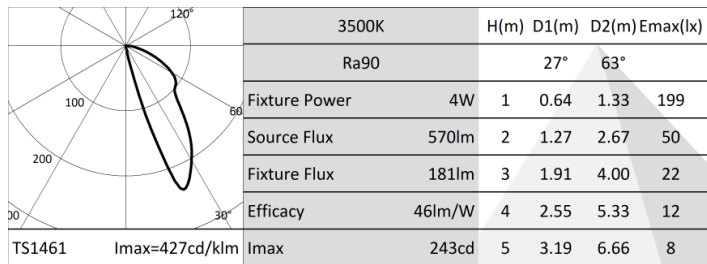
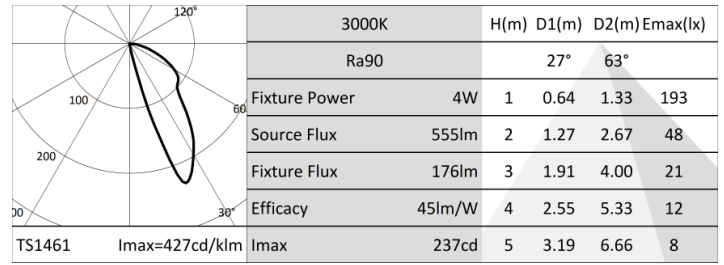
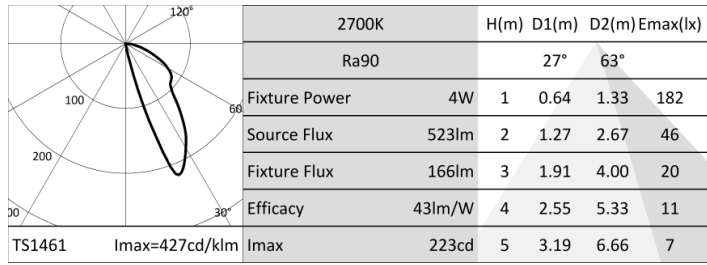
LCS GRAPH



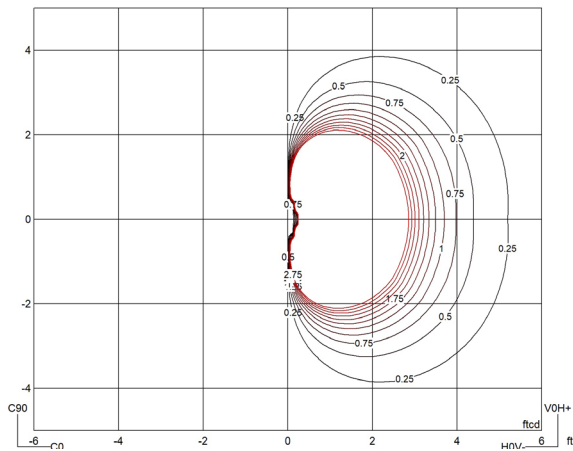
ZEDGE MINI BOLLARD

PHOTOMETRY

ZEDGE MINI HIGH OUTPUT



ISOLUX DIAGRAM



MOUNTING HEIGHT = 16"

LCS GRAPH

