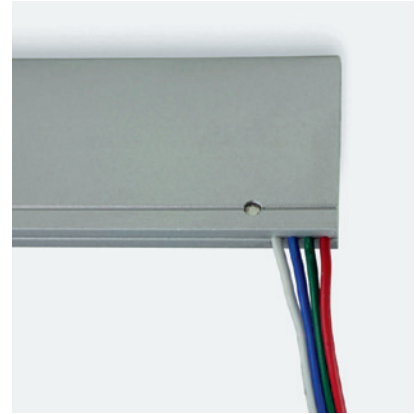


Linear

Groove Light RGB Fixture Guide

KKDÖ

Indoor/Outdoor | Recessed | RGB output

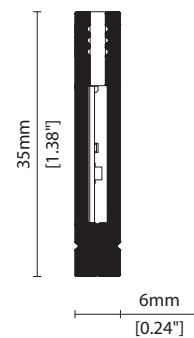


Key applications

- ✓ Architectural detail
- ✓ Cabinet/Furniture
- ✓ Interior/Exterior
- ✓ Orientation lighting
- ✓ Special effect

Key features

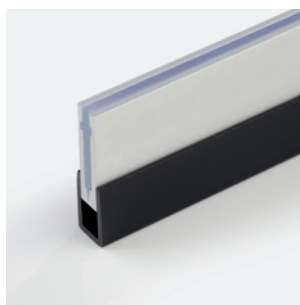
- ✓ Custom lengths
- ✓ Decorative
- ✓ Diffusion: Homogenous
- ✓ Direct view
- ✓ Form factor: Small
- ✓ IP40
- ✓ IP65
- ✓ RGB
- ✓ Thin light line



MOUNTING METHODS



KKCP-16 Clip



KKCH-01 PVC channel

Linear

Groove Light RGB

Specification sheet

KKDC



Dimension	H35/W6/L100-1000mm (H1.38/W0.24/L3.94-39.37in)
PCB increment	100mm increment/1000mm max (3.94in increment/39.37in max)
Chip	Everlight
Beam angle	110° (Diffused Cover)
Colours	Red 621-633nm/Blue 465-475nm/Green 515-525nm
Bin/Step	12nm tolerance
CRI	N/A
Lifetime	20,000 hours @ 25°C (20,000 hours @ 77°F)
Operating temp	T _a = -25 to 35°C (T _c max = 66°C) T _a = -13 to 95°F (T _c max = 150.8°F)
IP rating	IP40/IP65
Finish	Silver anodised
Cover/lens	Diffused
Mounting	Recessed mounting via clips or channel (no flange)
Power feed	Hardwire tails
Control	DMX/DALI

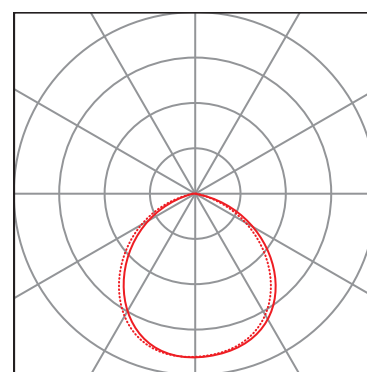
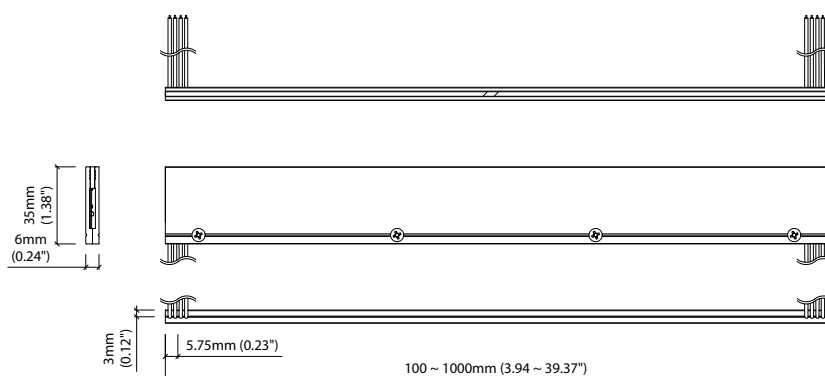


PERFORMANCE DATA

Power consumption	Supply voltage	Supply current
21.6W/m (6.58W/ft)	24V DC	0.9A/m (0.274A/ft)

Diffused Cover

Red: 2lm/m (0.6lm/ft)
 Green: 10lm/m (3lm/ft)
 Blue: 3lm/m (1lm/ft)
 RGB: 15lm/m (5lm/ft)



— C0 / C180 cd / 1000 lm - - - C90 / C270

Data derived from independent UKAS / IESNA LM-79-08 accredited testing of production samples.

See KKDC website for product document updates.

www.kkdc.lighting

GrooveLightRGBS-02.02EN-20220311

Groove Light RGB

Code Table



FIXTURE

Model	Finish	Cover	Grade	LED	Colour (CCT)	Length Availability ¹	IP	Cable Length	Power Feed ²	Input		
Groove Light RGB	GQ Silver Anodised	SA Diffused	C	s	101 RGB	RGB	m	100-1000mm 100mm increments	IP40 40 IP65 65	300mm (11.81in) 0300	Single no sheath tail S00X Double no sheath tail D00X	DC 24V g
						i		3.94-39.37in 3.94in increments				
(Specify length code OR total run length)												

¹ Refer to **Length Availability List** or enter total run length instead of length code

² Refer to **Power Feed Options** on **Options** pages

Code Example:

GQ	-	SA	-	C	-	s	-	101	-	RGB	-	m	500	-	40	-	0300	-	D00X	-	g
Groove Light RGB		Silver Anodised		Diffused				101		RGB			500mm		IP40		300mm/11.81"		Double no sheath tail		DC 24V

ACCESSORIES

Lighting Accessories

KKLA-01A	Groove Light-L accessory (2700K)
KKLA-01P	Groove Light-L accessory (3000K)
KKLA-02A	Groove Light-X accessory (2700K)
KKLA-02P	Groove Light-X accessory (3000K)

* Refer to **Lighting Accessories** on **Accessories** pages

Mounting Accessories

KKCP-16	Clip
KKCH-01	PVC Channel

* Refer to **Mounting accessories** on **Accessories** pages

PSU/Driver

DALI/DMX

* Refer to **Driver/PSU Options** page for details or provide requirement and KKDC to offer the suitable option

LED ENGINE VARIANTS (LED STRIP TYPE)

Luminaire	Output	LED	Lumen/m	Lumen/ft	W/m	W/ft	Spec Doc	Length	Increment
Groove Light	Low	103	40	12	7.7	2.34	Groove Light	100-1000mm (3.94-39.37in)	100mm (3.94in)
Groove Light IP67	Low	104	45	13	12	3.66	Groove Light IP67	100-1000mm (3.94-39.37in)	100mm (3.94in)
Groove Light RGB		101	Red 2 Green 10 Blue 3 RGB 15	Red 0.6 Green 3 Blue 1 RGB 5	21.6	6.58	Groove Light RGB	100-1000mm (3.94-39.37in)	100mm (3.94in)

* Performance data: diffused cover, RGB

Linear

Groove Light RGB

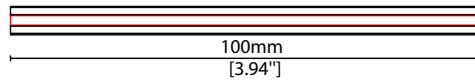
Length Availability List

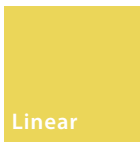


Length Code		Fixture Length ¹		LED Strip ²		End Cap Dimension		Wattage (W)	Output (lm)			
Metric	Imperial(US)	Metric	Imperial(US)	Metric	Imperial(US)	Metric	Imperial(US)		R	G	B	W
m0100	i0004	100mm	3.94in	100mm	3.94in	N/A	N/A	2.16	0	1	0	2
m0200	i0008	200mm	7.87in	200mm	7.87in	N/A	N/A	4.32	0	2	1	3
m0300	i0012	300mm	11.81in	300mm	11.81in	N/A	N/A	6.48	1	3	1	5
m0400	i0016	400mm	15.75in	400mm	15.75in	N/A	N/A	8.64	1	4	1	6
m0500	i0020	500mm	19.69in	500mm	19.69in	N/A	N/A	10.80	1	5	2	8
m0600	i0024	600mm	23.62in	600mm	23.62in	N/A	N/A	12.96	1	6	2	9
m0700	i0028	700mm	27.56in	700mm	27.56in	N/A	N/A	15.12	1	7	2	11
m0800	i0031	800mm	31.50in	800mm	31.50in	N/A	N/A	17.28	2	8	2	12
m0900	i0035	900mm	35.43in	900mm	35.43in	N/A	N/A	19.44	2	9	3	14
m1000	i0039	1000mm	39.37in	1000mm	39.37in	N/A	N/A	21.60	2	10	3	15

¹ Actual total overall length of light fixture (LED strip + end caps + void/wire hole)

² Actual length of PCB strip





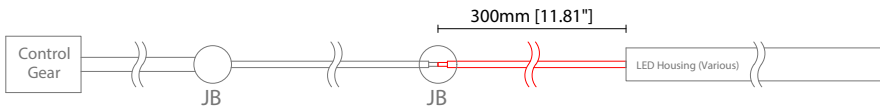
Groove Light RGB Options



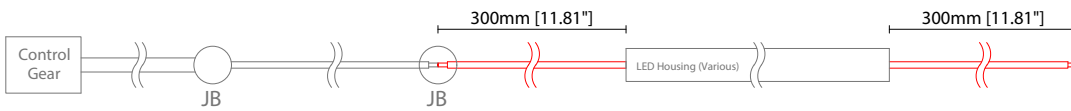
POWER FEED OPTIONS

* Options are an integral part of the fixture ordering codes. Please refer to **Code Table** pages.

0300 S00X 300mm (11.81") Single no sheath tail



0300 D00X 300mm (11.81") Double no sheath tail

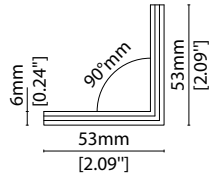


Key

Control Gear Power supply, sub-controllers & control systems
JB Junction box / cable connection

LIGHTING ACCESSORIES

Note: Accessories are to be ordered separately with corresponding code shown below.

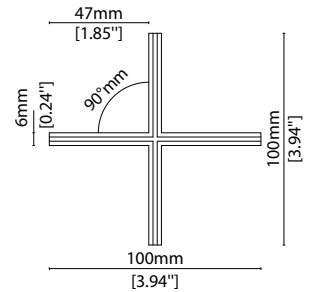
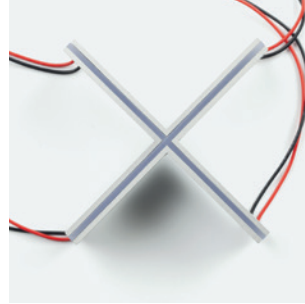


Groove Light-L accessory,
2 x 300mm (11.81in) single tails, IP40 only

KKLA-01A (2700K HCRI)

KKLA-01P (3000K HCRI)

W53/H53mm (W2.09/H2.09")



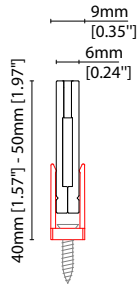
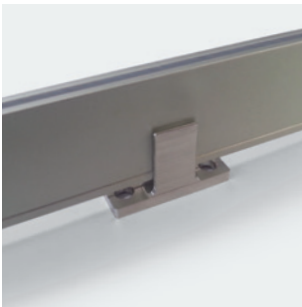
Groove Light-X accessory,
4 x 300mm (11.81in) single tails, IP40 only

KKLA-02A (2700K HCRI)

KKLA-02P (3000K HCRI)

W100/H100mm (W3.94/H3.94")

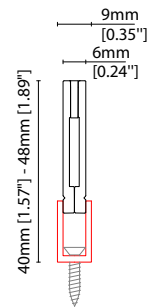
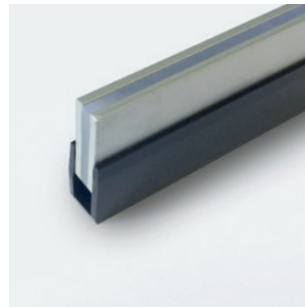
MOUNTING ACCESSORIES



KKCP-16 (1no.)

Clip (allow 2 per metre/40in)
Anodised aluminium finish

W9/H40-50mm (W0.35/H1.57-1.97")



KKCH-01 *

PVC channel (minimum 200mm (7.87in) PVC channel per
500mm (19.69in) of Groove Light)
Black PVC finish

W9/H40-48mm (W0.35/H1.57-1.89")

* Specify length of channel in 1000mm (39.37in) increments
(to be cut on site further as required)

KKDC CONTROL



IP20
Plastic housing
L170/W59/H29mm
(L6.69/W2.32/H1.14in)

KKDM-06 1-10V
visDIM dimmable sub-controller
(4 x 8A max @ 12-36V)



IP20
Plastic housing
L170/W53.4/H28mm
(L6.69/W2.10/H1.10in)

KKSC-05 DMX
visDIM dimmable sub-controller
(4 x 5A max @ 12-36V)



IP20
Plastic housing
L170/W59/H29mm
(L6.69/W2.32/H1.14in)

KKDL-02 DALI
visDIM dimmable sub-controller
(4 x 8A max @ 12-36V)



IP20
Plastic housing
L166/W53.4/H23mm
(L6.54/W2.10/H0.91in)

KKDL-03 DALI
visDIM dimmable sub-controller
(4 x 5A max @ 12-36V)

AVAILABLE PSU OPTIONS

Control Mode	PSU (Order Code)	Input Voltage AC	Output Voltage DC	Rated Output Current	Rated Power	Dim %	IP Rating
Switched	CEN-60-24	90-295V	24V	2.5A	60W	-	IP67
	HLG-60H-24	90-305V	24V	2.5A	60W	-	IP67
	HLG-100H-24	90-305V	24V	4.0A	100W	-	IP67
	HLG-150H-24	90-305V	24V	6.3A	150W	-	IP67
	HLG-240H-24	90-305V	24V	10A	240W	-	IP67
0-10V (1-10V)	PWM-40-24	90-305V	24V	1.67A	40W	100-0.15 (100-10)	IP67
	PWM-60-24	90-305V	24V	2.5A	60W	100-0.15 (100-10)	IP67
	PWM-90-24	90-305V	24V	3.67A	90W	100-0.15 (100-10)	IP67
	PWM-120-24	90-305V	24V	5.0A	120W	100-0.15 (100-10)	IP67
DALI	LIN100A1	120-277V	24V	1A per channel	100W	100-0.1	IP66/IP40
DMX RGB	LIN100A1	120-277V	24V	1.33A per channel	100W	100-0.1	IP66/IP40
DMX RGBW	LIN100A1	120-277A	24V	1A per channel	100W	100-0.1	IP66/IP40

Flicker Free Options - Combination of PSU+ sub-controller

Control Mode	PSU (Order Code)	Sub-controller (Order Code)	Input Voltage AC	Output Voltage DC	Rated Output Current	Rated Power	Dim %	IP Rating PSU/ Sub-controller
0-10V or 1-10V	CEN-60-24	KKDM-06	90-295V	24V	2.5A	60W	100-0.9	IP67/IP20
	HLG-60H-24	KKDM-06	90-295V	24V	2.5A	60W	100-0.9	IP67/IP20
	HLG-100H-24	KKDM-06	90-295V	24V	4.0A	100W	100-0.9	IP67/IP20
	HLG-150H-24	KKDM-06	90-295V	24V	6.3A	150W	100-0.9	IP67/IP20
	HLG-240H-24	KKDM-06	90-295V	24V	10.0A	240W	100-0.9	IP67/IP20
DALI	CEN-60-24	KKDL-02/03	90-295V	24V	2.5A	60W	100-0.1	IP67/IP20
	HLG-60H-24	KKDL-02/03	90-305V	24V	2.5A	60W	100-0.1	IP67/IP20
	HLG-100H-24	KKDL-02/03	90-305V	24V	4.0A	100W	100-0.1	IP67/IP20
	HLG-150H-24	KKDL-02/03	90-305V	24V	6.3A	150W	100-0.1	IP67/IP20
	HLG-240H-24	KKDL-02/03	90-305V	24V	10.0A	240W	100-0.1	IP67/IP20
DMX RGB	CEN-60-24	KKSC-05	90-295V	24V	2.5A	60W	100-0.9	IP67/IP20
	HLG-60H-24	KKSC-05	90-305V	24V	2.5A	60W	100-0.9	IP67/IP20
	HLG-100H-24	KKSC-05	90-305V	24V	4A	100W	100-0.9	IP67/IP20
	HLG-150H-24	KKSC-05	90-305V	24V	6.3A	150W	100-0.9	IP67/IP20
	HLG-240H-24	KKSC-05	90-305V	24V	10.0A	240W	100-0.9	IP67/IP20

¹ The items shown above cover the most frequently used specification but does not exhaust the possible options

² PSU and/or driver can be chosen from the table, or KKDC may recommend the best option upon receipt of the controls requirement and installation environment

³ Electrical shop drawing will include detailed information of PSU and relevant control drivers

⁴ Cut sheets are available on the controls section of www.kkdc.lighting or upon request