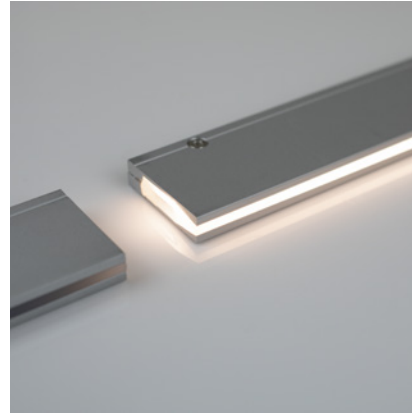


Linear

Groove Light IP67 Fixture Guide



Indoor/Outdoor | Recessed | Low output up to 45lm/m (13lm/ft)

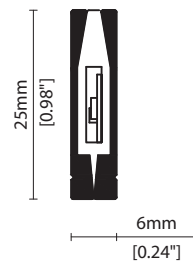


Key applications

- ✓ Architectural detail
- ✓ Cabinet/Furniture
- ✓ Exterior
- ✓ Floor
- ✓ Orientation lighting

Key features

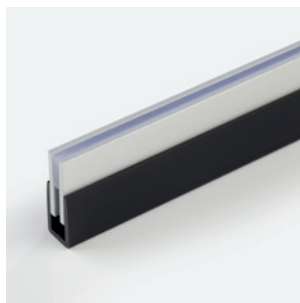
- ✓ Custom lengths
- ✓ Decorative
- ✓ Diffusion: Homogenous
- ✓ Direct view
- ✓ Form factor: Small
- ✓ IP67
- ✓ Output low
- ✓ Thin light line



MOUNTING METHODS



KKCP-16 Clip



KKCH-01 PVC channel

Linear

Groove Light IP67

Specification sheet



Dimension	H25/W6/L100-1000mm (H0.98/W0.24/L3.94-39.37in)
PCB increment	100mm increment/1000mm max (3.94in increment/39.37in max)
LED Pitch	10mm - 100LED/m (0.39in - 30.5LED/ft)
Chip	s-line Toyoda Gosei k-line Toyoda Gosei or Equivalent
Beam angle	115° (Diffused cover)
Colours	s-line 2300K/2500K/2700K/3000K/3500/4000K k-line 2300K/2500K/2700K/3000K/3500/4000K
Bin/Step	s-line 2-step MacAdam ellipse k-line 3-step MacAdam ellipse
CRI	≥ 90
Lifetime	50,000 hours @ 25°C (50,000 hours @ 77°F)
Operating temp	T _a = -25 to 50°C (T _C max = 72°C) T _a = -13 to 122°F (T _C max = 162°F)
IP rating	IP67
Finish	Silver anodised
Cover/lens	Diffused
Mounting	Recessed mounting via clips or channel (no flange)
Power feed	Sheathed Hardwire tails
Control	0-10V/1-10V/DMX/DALI



LED Grading Key

Exclusive Grade

s-line*
2-step CCT range

*KKDC tuned
CCT range

Base Grade

k-line
3-step commercial range
Energy Star CCTs

PERFORMANCE DATA @ 3000K

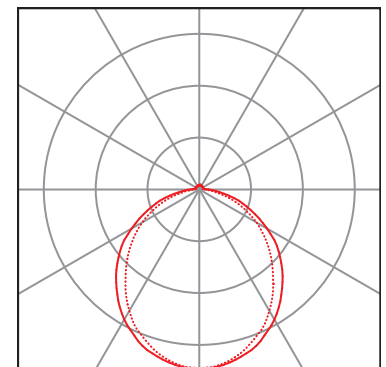
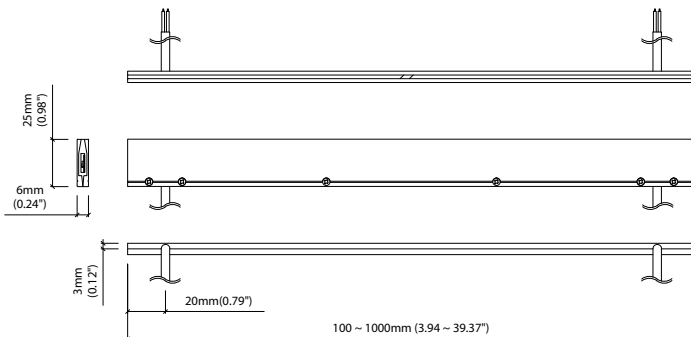
Power consumption	Supply voltage	Supply current
12W/m (3.66W/ft)	24V DC	0.5A/m (0.16A/ft)

Colour Rendering Index (CRI)

	R1	R2	R3	R4	R5	R6	R7	R8	R9	R10	R11	R12	R13	R14
k-line	94	97	98	93	93	96	92	83	60	93	94	82	95	99

Diffused Cover

				CRI	R9	Rf	Rg
s-line	45lm/m (13lm/ft)	4lm/W		93	62	-	-
k-line	44lm/m (13lm/ft)	4lm/W		92	60	89	97



Diffused Cover
— C0 / C180 cd / 1000 lm C90 / C270

Data derived from independent UKAS/IESNA LM-79-08 accredited testing of production samples.

Linear

Groove Light IP67

Code Table



FIXTURE

Model	Finish	Cover	Grade ¹	LED	Colour (CCT)	Length Availability ²	IP	Cable Length	Power Feed ³	Input	
Groove Light IP67	GF	Silver Anodised SA	Diffused C	s s	104	2300K 23	m 100-1000mm 100mm increments	IP67 67	300mm (11.81in) 0300	Single no sheath tail S00X Double no sheath tail D00X	DC 24V g
						2500K 25					
						2700K 27	i 3.94-39.37in 3.94in increments				
						3000K 30					
						3500K 35	(Specify length code OR total run length)				
		4000K 40									

¹ Refer to LED Grading Key on Specification sheet page

² Refer to Length Availability List or enter total run length instead of length code

³ Refer to Power Feed Options on Options pages

Code Example:

GF	-	SA	-	C	-	k	-	104	-	30	-	m	500	-	67	-	0300	-	D00X	-	g
Groove Light IP67	Silver Anodised	Diffused						104		3000K			500mm		IP67		300mm/11.81"		Double no sheath tail		24V DC

ACCESSORIES

Lighting Accessories

KKLA-01A	Groove Light-L accessory (2700K)
KKLA-01P	Groove Light-L accessory (3000K)
KKLA-02A	Groove Light-X accessory (2700K)
KKLA-02P	Groove Light-X accessory (3000K)

* Refer to Lighting Accessories on Accessories pages

Mounting Accessories

KKCP-16	Clip
KKCH-01	PVC Channel

* Refer to Mounting accessories on Accessories pages

PSU/Driver

0-10V/1-10V/DALI/DMX

* Refer to Driver/PSU Options page for details or provide requirement and KKDC to offer the suitable option

LED ENGINE VARIANTS (LED STRIP TYPE)

Luminaire	Output	LED	Lumen/m	Lumen/ft	W/m	W/ft	Spec Doc	Length	Increment
Groove Light	Low	103	40	12	7.7	2.34	Groove Light	100-1000mm (3.94-39.37in)	100mm (3.94in)
Groove Light IP67	Low	104	45	13	12	3.66	Groove Light IP67	100-1000mm (3.94-39.37in)	100mm (3.94in)
Groove Light RGB		101	Red 2 Green 10 Blue 3 RGB 15	Red 0.6 Green 3 Blue 1 RGB 5	21.6	6.58	Groove Light RGB	100-1000mm (3.94-39.37in)	100mm (3.94in)

* Performance data: s-line, diffused cover, 3000K

Linear

Groove Light IP67

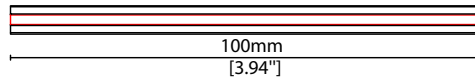
Length Availability List



Length Code		Fixture Length ¹		LED Strip ²		End Cap Dimension		Wattage (W)	Output (lm)	
Metric	Imperial(US)	Metric	Imperial(US)	Metric	Imperial(US)	Metric	Imperial(US)		3000K (Test Data)	Range Data
m0100	i0004	100mm	3.94in	100mm	3.94in	N/A	N/A	0.77	4	3-4
m0200	i0008	200mm	7.87in	200mm	7.87in	N/A	N/A	1.54	8	6-8
m0300	i0012	300mm	11.81in	300mm	11.81in	N/A	N/A	2.31	12	9-12
m0400	i0016	400mm	15.75in	400mm	15.75in	N/A	N/A	3.08	15	12-16
m0500	i0020	500mm	19.69in	500mm	19.69in	N/A	N/A	3.85	19	15-20
m0600	i0024	600mm	23.62in	600mm	23.62in	N/A	N/A	4.62	23	18-24
m0700	i0028	700mm	27.56in	700mm	27.56in	N/A	N/A	5.39	27	22-28
m0800	i0031	800mm	31.50in	800mm	31.50in	N/A	N/A	6.16	31	25-32
m0900	i0035	900mm	35.43in	900mm	35.43in	N/A	N/A	6.93	35	28-36
m1000	i0039	1000mm	39.37in	1000mm	39.37in	N/A	N/A	7.70	39	31-40

¹ Actual total overall length of light fixture (LED strip + end caps + void/wire hole)

² Actual length of PCB strip





Groove Light IP67

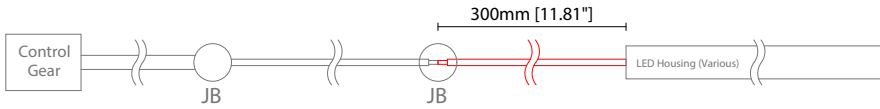
Options



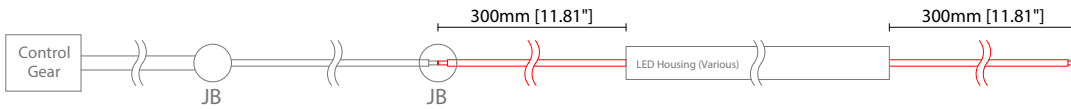
POWER FEED OPTIONS

* Options are an integral part of the fixture ordering codes. Please refer to **Code Table** pages.

0300 S00X 300mm (11.81") Single no sheath tail



0300 D00X 300mm (11.81") Double no sheath tail

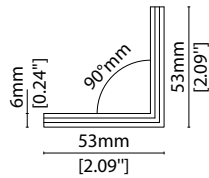


Key

Control Gear Power supply, sub-controllers & control systems
JB Junction box / cable connection

LIGHTING ACCESSORIES

Note: Accessories are to be ordered separately with corresponding code shown below.

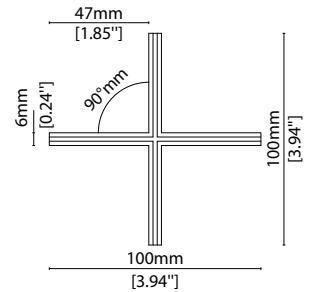
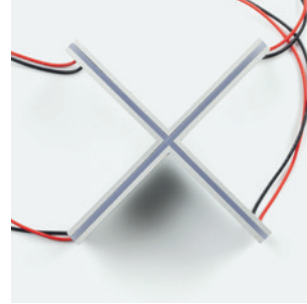


Groove Light-L accessory,
2 x 300mm (11.81in) single tails, IP40 only

KKLA-01A (2700K HCRI)

KKLA-01P (3000K HCRI)

W53/H53mm (W2.09/H2.09")



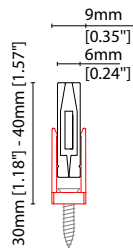
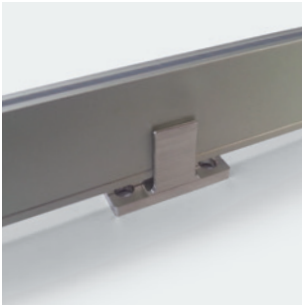
Groove Light-X accessory,
4 x 300mm (11.81in) single tails, IP40 only

KKLA-02A (2700K HCRI)

KKLA-02P (3000K HCRI)

W100/H100mm (W3.94/H3.94")

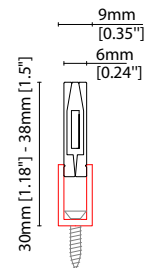
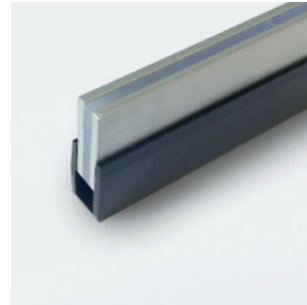
MOUNTING ACCESSORIES



KKCP-16 (1no.)

Clip (allow 2 per metre/40in)
Anodised aluminium finish

W9/H30-40mm (W0.35/H1.18-1.57")



KKCH-01 *

PVC channel (minimum 200mm (7.87in) PVC channel per
500mm (19.69in) of Groove Light)
Black PVC finish

W9/H30-38mm (W0.35/H1.18-1.5")

* Specify length of channel in 1000mm (39.37in) increments
(to be cut on site further as required)

POWER FEED



CN67-2P-0300 300mm (11.81in) pair

CN67-2P-1000 1000mm (39.37in) pair

CN67-2P-3000 3000mm (118.11in) pair

IP67

2 PIN male + female connector set

Linear

Groove Light IP67 Accessories

KKDC

EXTERIOR JUNCTION BOXES



KKJB-07

IP67 Slim J-Box
(including type A,B,C,D bushings)



KKJB-07R

Potting resin for IP67 Slim J-Box

KKDC CONTROL



KKDM-06 1-10V

visDIM dimmable sub-controller
(4 x 8A max @ 12-36V)

IP20
Plastic housing
L170/W59/H29mm
(L6.69/W2.32/H1.14in)



KKSC-05 DMX

visDIM dimmable sub-controller
(4 x 5A max @ 12-36V)

IP20
Plastic housing
L170/W53.4/H28mm
(L6.69/W2.10/H1.10in)



KKDL-02 DALI

visDIM dimmable sub-controller
(4 x 8A max @ 12-36V)

IP20
Plastic housing
L170/W59/H29mm
(L6.69/W2.32/H1.14in)



KKDL-03 DALI

visDIM dimmable sub-controller
(4 x 5A max @ 12-36V)

IP20
Plastic housing
L166/W53.4/H23mm
(L6.54/W2.10/H0.91in)

AVAILABLE PSU OPTIONS

Control Mode	PSU (Order Code)	Input Voltage AC	Output Voltage DC	Rated Output Current	Rated Power	Dim %	IP Rating
Switched	CEN-60-24	90-295V	24V	2.5A	60W	-	IP67
	HLG-60H-24	90-305V	24V	2.5A	60W	-	IP67
	HLG-100H-24	90-305V	24V	4.0A	100W	-	IP67
	HLG-150H-24	90-305V	24V	6.3A	150W	-	IP67
	HLG-240H-24	90-305V	24V	10A	240W	-	IP67
0-10V (1-10V)	PWM-40-24	90-305V	24V	1.67A	40W	100-0.15 (100-10)	IP67
	PWM-60-24	90-305V	24V	2.5A	60W	100-0.15 (100-10)	IP67
	PWM-90-24	90-305V	24V	3.67A	90W	100-0.15 (100-10)	IP67
	PWM-120-24	90-305V	24V	5.0A	120W	100-0.15 (100-10)	IP67
DALI	LIN100A1	120-277V	24V	1A per channel	100W	100-0.1	IP66/IP40
DMX RGB	LIN100A1	120-277V	24V	1.33A per channel	100W	100-0.1	IP66/IP40
DMX RGBW	LIN100A1	120-277A	24V	1A per channel	100W	100-0.1	IP66/IP40

Flicker Free Options - Combination of PSU+ sub-controller

Control Mode	PSU (Order Code)	Sub-controller (Order Code)	Input Voltage AC	Output Voltage DC	Rated Output Current	Rated Power	Dim %	IP Rating PSU/ Sub-controller
0-10V or 1-10V	CEN-60-24	KKDM-06	90-295V	24V	2.5A	60W	100-0.9	IP67/IP20
	HLG-60H-24	KKDM-06	90-295V	24V	2.5A	60W	100-0.9	IP67/IP20
	HLG-100H-24	KKDM-06	90-295V	24V	4.0A	100W	100-0.9	IP67/IP20
	HLG-150H-24	KKDM-06	90-295V	24V	6.3A	150W	100-0.9	IP67/IP20
	HLG-240H-24	KKDM-06	90-295V	24V	10.0A	240W	100-0.9	IP67/IP20
DALI	CEN-60-24	KKDL-02/03	90-295V	24V	2.5A	60W	100-0.1	IP67/IP20
	HLG-60H-24	KKDL-02/03	90-305V	24V	2.5A	60W	100-0.1	IP67/IP20
	HLG-100H-24	KKDL-02/03	90-305V	24V	4.0A	100W	100-0.1	IP67/IP20
	HLG-150H-24	KKDL-02/03	90-305V	24V	6.3A	150W	100-0.1	IP67/IP20
	HLG-240H-24	KKDL-02/03	90-305V	24V	10.0A	240W	100-0.1	IP67/IP20
DMX RGB	CEN-60-24	KKSC-05	90-295V	24V	2.5A	60W	100-0.9	IP67/IP20
	HLG-60H-24	KKSC-05	90-305V	24V	2.5A	60W	100-0.9	IP67/IP20
	HLG-100H-24	KKSC-05	90-305V	24V	4A	100W	100-0.9	IP67/IP20
	HLG-150H-24	KKSC-05	90-305V	24V	6.3A	150W	100-0.9	IP67/IP20
	HLG-240H-24	KKSC-05	90-305V	24V	10.0A	240W	100-0.9	IP67/IP20

¹ The items shown above cover the most frequently used specification but does not exhaust the possible options

² PSU and/or driver can be chosen from the table, or KKDC may recommend the best option upon receipt of the controls requirement and installation environment

³ Electrical shop drawing will include detailed information of PSU and relevant control drivers

⁴ Cut sheets are available on the controls section of www.kkdc.lighting or upon request