

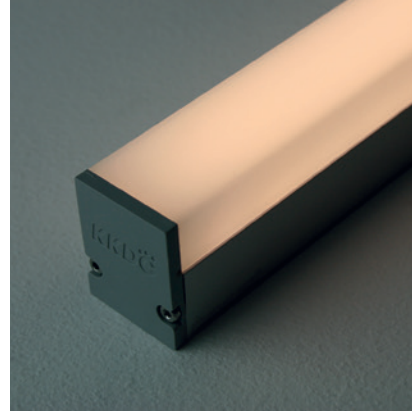
Linear

LiNi Glow XL 508

Fixture Guide

KKDÖ

Indoor | Surface | Mid output up to 1040lm/m (317lm/ft)

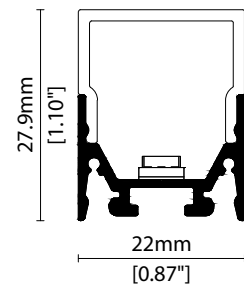


Key applications

- ✓ Architectural detail
- ✓ Ceiling
- ✓ Cove lighting
- ✓ Downlighting
- ✓ Indirect lighting
- ✓ Interior
- ✓ Mirror back lighting
- ✓ Shelving display
- ✓ Under bench
- ✓ Under cabinet

Key features

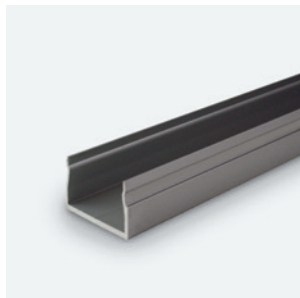
- ✓ Custom lengths
- ✓ Diffusion: Homogenous
- ✓ Direct view
- ✓ Extensive CCT range
- ✓ Form factor: Medium
- ✓ IP40
- ✓ Output mid



MOUNTING METHODS



KKCP-11 Concealed clip



KKCR-01-1000 Cable raceway (1000mm)
KKCR-01-2000 Cable raceway (2000mm)
KKCR-01-3000 Cable raceway (3000mm)



KKJT-02 Joining bar

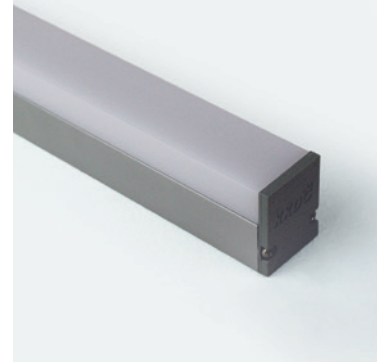
Linear

LiNi Glow XL 508

Specification sheet



Dimension	H28/W22/L82.4-2011mm (H1.1/W0.87/L3.24-79.17in)	
PCB increment	71.4mm increment/2000mm max (2.81in increment/78.74in max)	
LED pitch	11.9mm - 84LED/m (0.47in - 26LED/ft)	
Chip	s/e-line	Toyoda Gosei
	k-line	Toyoda Gosei or Equivalent
Beam angle	156° (Diffused Cover)	
Colours	s/e-line	1900K/2100K/2300K/2500K/2700K/3000K/3500K/4000K/5000K
	k-line	1900K/2100K/2300K/2500K/2700K/3000K/3500K/4000K/5000K
Bin/Step	s-line	2-step MacAdam ellipse
	e/k-line	3-step MacAdam ellipse
CRI	≥ 90	
Lifetime	50,000 hours @ 25°C (50,000 hours @ 77°F)	
Operating temp	T _a = -25 to 50°C (T _C max = 63°C) T _a = -13 to 122°F (T _C max = 145.4°F)	
IP rating	IP40	
Finish	Silver anodised	
Cover/lens	Diffused	
Mounting	Surface mounting via concealed clips or cable raceway	
Power feed	Hardwire tails or male/female connectors	
Control	0-10V/1-10V/DMX/DALI	



LED Grading Key

Exclusive Grade

s s-line*	*KKDC tuned CCT range
e e-line*	3-step CCT range

Base Grade

k k-line	3-step commercial range Energy Star CCTs
-----------------	---

PERFORMANCE DATA @ 3000K

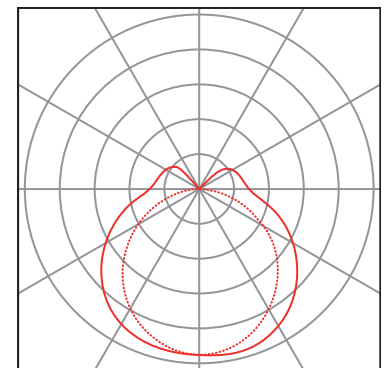
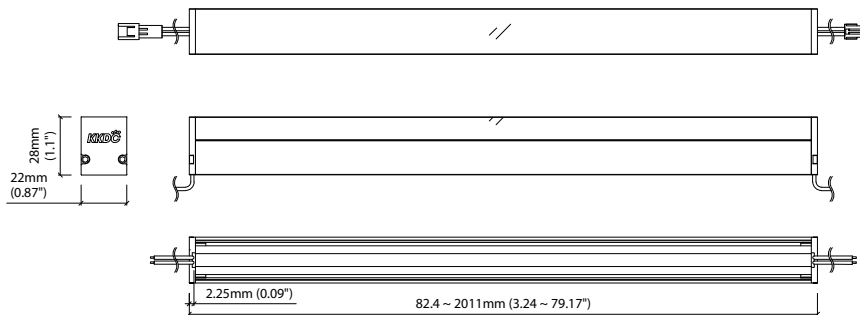
Power consumption	Supply voltage	Supply current
17.5W/m (5.33W/ft)	24V DC	0.73A/m (0.22A/ft)

Colour Rendering Index (CRI)

	R1	R2	R3	R4	R5	R6	R7	R8	R9	R10	R11	R12	R13	R14
k-line	94	97	98	93	93	96	92	83	60	93	94	82	95	99

Diffused Cover

				CRI	R9	Rf	Rg
s/e-line	1040lm/m (317lm/ft)	59.4lm/W		92	50	-	-
k-line	900lm/m (274lm/ft)	51.5lm/W		92	60	-	-



Diffused Cover
— C0 / C180 cd / 1000 lm - - - C90 / C270

Data derived from independent UKAS/IESNA LM-79-08 accredited testing of production samples.

Linear

LiNi Glow XL 508

Code Table

KKDC

FIXTURE

Model	Finish	Cover	Grade ¹	LED	Colour (CCT)	Length Availability ²	IP	Cable Length	Power Feed ³	Input										
LiNi Glow XL	GX	Silver Anodised	SA	Diffused U cover	0	s	s	508	1900K	19	m	82.4-2011mm 71.4mm increments	IP40	40	300mm/11.81"	0300	Single no sheath tail	S00X	DC 24V	g
									2100K	21					1000mm/39.37"	1000	Double no sheath tail	D00X		
									2300K	23					i	3.24-79.17in 2.81in increments	Single no sheath IP20 connector	S20X		
									2500K	25	(Specify length code OR total run length)				Double no sheath IP20 connector	D20X				
									2700K	27										
									3000K	30										
									3500K	35										
									4000K	40										
									5000K	50										

¹ Refer to **LED Grading Key** on **Specification sheet** page

² Refer to **Length Availability List** or enter total run length instead of length code

³ Refer to **Power Feed Options** on **Options** pages

Code Example:

GX	-	SA	-	0	-	s	-	508	-	35K	-	m	-	511	-	40	-	0300	-	D00X	-	g
LiNi Glow XL		Silver Anodised		Diffused U cover		s		508		3500K		510.8mm		IP40		300mm/11.81"		Double no sheath tail		DC 24V		

ACCESSORIES

Mounting Accessories

KKCP-11	Concealed Clip
KKCR-01-1000	1000mm/39.37" Cable Raceway
KKCR-01-2000	2000mm/78.74" Cable Raceway
KKCR-01-3000	3000mm/118.11" Cable Raceway
KKJT-02	Joining Bar

Connection Accessories

KKCN-01	2 PIN male & female 50mm/1.97" pair
KKCN-03	2 PIN male & female 300mm/11.81" pair
KKCN-06	2 PIN 300mm/11.81" extension lead

* Refer to **Power feed** on **Accessories** pages

PSU/Driver

0-10V/1-10V/DALI/DMX

* Refer to **Driver/PSU Options** page for details or provide requirement and KKDC to offer the suitable option

* Refer to **Mounting accessories** on **Accessories** pages

LED ENGINE VARIANTS (LED STRIP TYPE)

Colour	Output	LED	Lumen/m	Lumen/ft	W/m	W/ft	Spec Doc	Length	Increment
Single CCT	Low	352	300	91	5.5	1.67	LiNi Glow XL 352	94.3-2011mm (3.71-79.17in)	83.3mm (3.28in)
	Mid	504	750	229	12.5	3.81	LiNi Glow XL 504	111-2011mm (4.37-79.17in)	100mm (3.94in)
	Mid	508	1040	317	17.5	5.33	LiNi Glow XL 508	82.4-2011mm (3.24-79.17in)	71.4mm (2.81in)
Warm Dim/Dynamic White	Max	040	2680	817	40	12.19	LiNi Glow XL A040	88-1511mm (3.46-59.49in)	38.46mm (1.51in)
	Low	207	530	161	11	3.35	LiNi Glow XL 207	94.3-2011mm (3.71-79.17in)	83.3mm (3.28in)
	Mid	208	920	311	15.6	4.75	LiNi Glow XL 208	177.7-2011mm (7.00-79.17in)	166.7mm (6.56in)
RGB		501	Red 90 Green 193 Blue 32 RGB 280	Red 27 Green 59 Blue 10 RGB 85	15.6	4.75	LiNi Glow XL RGB	94.3-2011mm (3.71-79.17in)	83.3mm (3.28in)

* Performance data: A/s/e-line, diffused Cover, 3000K

LiNi Glow XL 508

Length Availability List

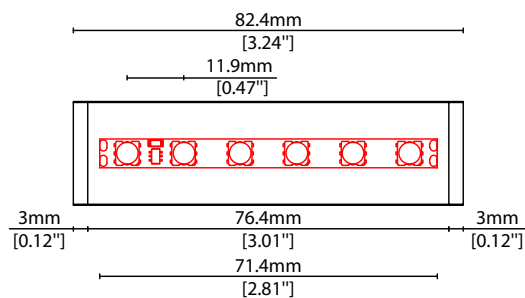


Length Code		Fixture Length ¹		LED Strip ²		End Cap Dimension ³		Wattage (W)	Output (lm)	
Metric	Imperial(US)	Metric	Imperial(US)	Metric	Imperial(US)	Metric	Imperial(US)		3000K (Test Data)	Range Data
m0082	i0003	82mm	3.25in	71mm	2.81in	6mm	0.24in	1.25	62	52-77
m0154	i0006	154mm	6.06in	143mm	5.62in	6mm	0.24in	2.50	124	103-154
m0225	i0009	225mm	8.87in	214mm	8.44in	6mm	0.24in	3.75	186	155-232
m0297	i0012	297mm	11.68in	286mm	11.25in	6mm	0.24in	5.00	248	206-309
m0368	i0014	368mm	14.49in	357mm	14.06in	6mm	0.24in	6.25	309	258-386
m0439	i0017	440mm	17.31in	429mm	16.87in	6mm	0.24in	7.50	371	309-463
m0511	i0020	511mm	20.12in	500mm	19.69in	6mm	0.24in	8.75	433	361-541
m0582	i0023	582mm	22.93in	571mm	22.50in	6mm	0.24in	10.00	495	412-618
m0654	i0026	654mm	25.74in	643mm	25.31in	6mm	0.24in	11.25	557	464-695
m0725	i0029	725mm	28.56in	714mm	28.12in	6mm	0.24in	12.50	619	515-772
m0797	i0031	797mm	31.37in	786mm	30.93in	6mm	0.24in	13.75	681	567-849
m0868	i0034	868mm	34.18in	857mm	33.75in	6mm	0.24in	15.00	743	618-927
m0939	i0037	940mm	36.99in	929mm	36.56in	6mm	0.24in	16.25	804	670-1004
m1011	i0040	1011mm	39.80in	1000mm	39.37in	6mm	0.24in	17.50	866	721-1081
m1082	i0043	1082mm	42.62in	1071mm	42.18in	6mm	0.24in	18.75	928	773-1158
m1154	i0045	1154mm	45.43in	1143mm	45.00in	6mm	0.24in	20.00	990	824-1236
m1225	i0048	1225mm	48.24in	1214mm	47.81in	6mm	0.24in	21.25	1052	876-1313
m1297	i0051	1297mm	51.05in	1286mm	50.62in	6mm	0.24in	22.50	1114	927-1390
m1368	i0054	1368mm	53.86in	1357mm	53.43in	6mm	0.24in	23.75	1176	979-1467
m1439	i0057	1440mm	56.68in	1429mm	56.24in	6mm	0.24in	25.00	1238	1030-1544
m1511	i0059	1511mm	59.49in	1500mm	59.06in	6mm	0.24in	26.25	1299	1082-1622
m1582	i0062	1582mm	62.30in	1571mm	61.87in	6mm	0.24in	27.50	1361	1133-1699
m1654	i0065	1654mm	65.11in	1643mm	64.68in	6mm	0.24in	28.75	1423	1185-1776
m1725	i0068	1725mm	67.93in	1714mm	67.49in	6mm	0.24in	30.00	1485	1236-1853
m1797	i0071	1797mm	70.74in	1786mm	70.31in	6mm	0.24in	31.25	1547	1288-1931
m1868	i0074	1868mm	73.55in	1857mm	73.12in	6mm	0.24in	32.50	1609	1339-2008
m1939	i0076	1940mm	76.36in	1929mm	75.93in	6mm	0.24in	33.75	1671	1391-2085
m2011	i0079	2011mm	79.17in	2000mm	78.74in	6mm	0.24in	35.00	1733	1442-2162

¹ Actual total overall length of light fixture (LED strip + end caps + void/wire hole)

² Actual length of PCB strip

³ Actual length of 2x end caps



Linear

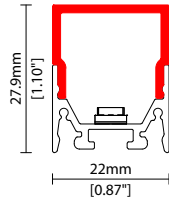
LiNi Glow XL 508

Options

KKDC

COVER/LENS OPTIONS

* Options are an integral part of the fixture ordering codes. Please refer to **Code Table** pages.

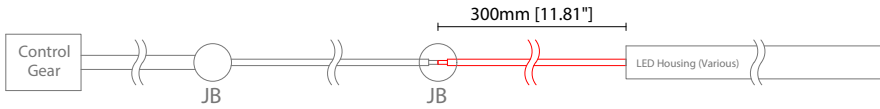


C Diffused cover

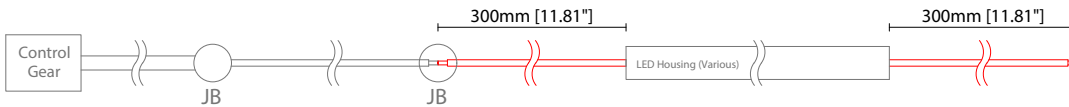
W22/H27.9mm (W0.87/H1.10")

POWER FEED OPTIONS

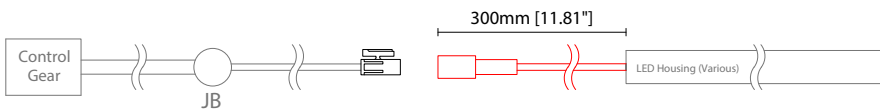
0300 S00X 300mm (11.81") Single no sheath tail



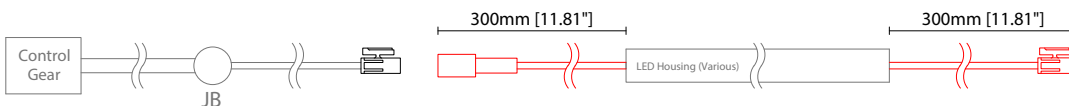
0300 D00X 300mm (11.81") Double no sheath tail



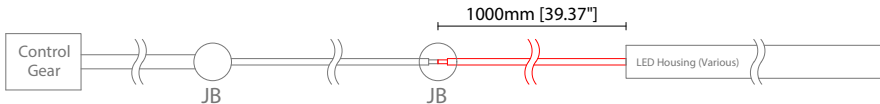
0300 S20X 300mm (11.81") Single no sheath IP20 connector



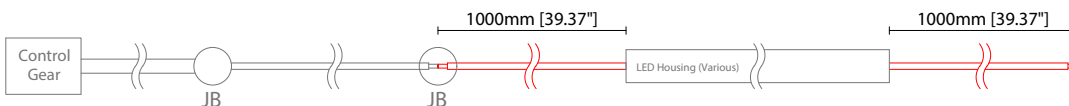
0300 D20X 300mm (11.81") Double no sheath IP20 connector



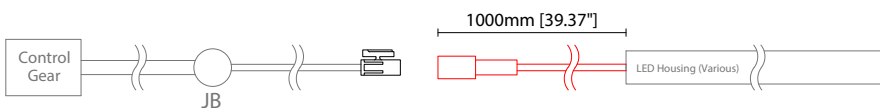
1000 S00X 1000mm (39.37") Single no sheath tail



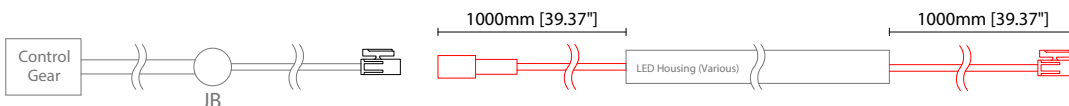
1000 D00X 1000mm (39.37") Double no sheath tail



1000 S20X 1000mm (39.37") Single no sheath IP20 connector



1000 D20X 1000mm (39.37") Double no sheath IP20 connector



Key

Control Gear Power supply, sub-controllers & control systems

JB Junction box / cable connection

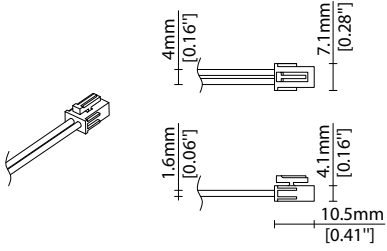
Linear

LiNi Glow XL 508 Options

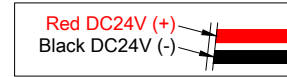
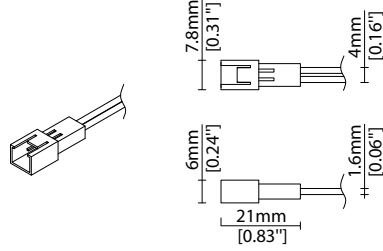


POWER FEED OPTIONS (CONTINUED)

2 Pin Female Connector



2 Pin Male Connector

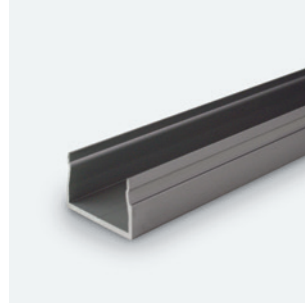
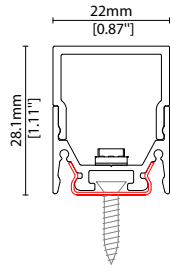


MOUNTING ACCESSORIES

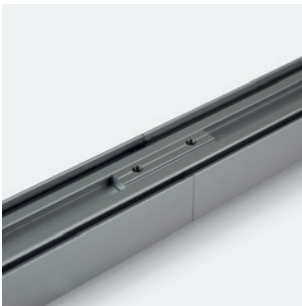
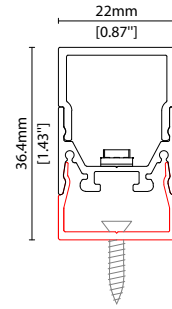
Note: Accessories are to be ordered separately with corresponding code shown below.



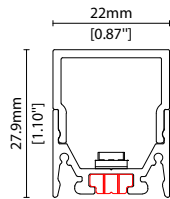
KKCP-11
 Concealed clip
 (allow 3 per metre/40in)
 S/Steel finish
 L20/W22/H28.1mm
 (L0.79/W0.87/H1.11")



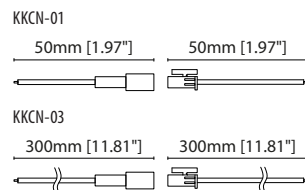
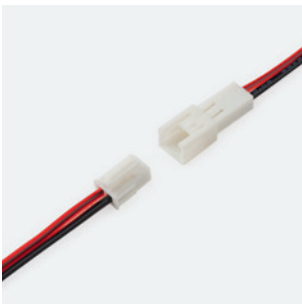
KKCR-01-1000 1000mm (39.37in)
KKCR-01-2000 2000mm (78.74in)
KKCR-01-3000 3000mm (118.11in)
 Cable raceway*
 Anodised aluminium finish
 W22/H36.4mm (W0.87/H1.43")
 * Cut & drilled to fit on site



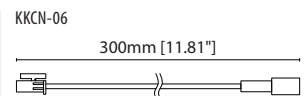
KKJT-02
 Joining bar* (allow 1 per join)
 Anodised aluminium finish
 L25mm (L0.98")
 * Mounting option required with
 Joining bar



POWER FEED



KKCN-01 50mm (1.97in) pair
KKCN-03 300mm (11.81in) pair
 2 PIN male + female connector set



KKCN-06
 2 PIN 300mm (11.81in) extension
 lead

Linear

LiNi Glow XL 508 Accessories

KKDC

KKDC CONTROL



IP20
Plastic housing
L170/W59/H29mm
(L6.69/W2.32/H1.14in)

KKDM-06 1-10V
visDIM dimmable sub-controller
(4 x 8A max @ 12-36V)



IP20
Plastic housing
L170/W53.4/H28mm
(L6.69/W2.10/H1.10in)

KKSC-05 DMX
visDIM dimmable sub-controller
(4 x 5A max @ 12-36V)



IP20
Plastic housing
L170/W59/H29mm
(L6.69/W2.32/H1.14in)

KKDL-02 DALI
visDIM dimmable sub-controller
(4 x 8A max @ 12-36V)



IP20
Plastic housing
L166/W53.4/H23mm
(L6.54/W2.10/H0.91in)

KKDL-03 DALI
visDIM dimmable sub-controller
(4 x 5A max @ 12-36V)

AVAILABLE PSU OPTIONS

Control Mode	PSU (Order Code)	Input Voltage AC	Output Voltage DC	Rated Output Current	Rated Power	Dim %	IP Rating
Switched	CEN-60-24	90-295V	24V	2.5A	60W	-	IP67
	HLG-60H-24	90-305V	24V	2.5A	60W	-	IP67
	HLG-100H-24	90-305V	24V	4.0A	100W	-	IP67
	HLG-150H-24	90-305V	24V	6.3A	150W	-	IP67
	HLG-240H-24	90-305V	24V	10A	240W	-	IP67
0-10V (1-10V)	PWM-40-24	90-305V	24V	1.67A	40W	100-0.15 (100-10)	IP67
	PWM-60-24	90-305V	24V	2.5A	60W	100-0.15 (100-10)	IP67
	PWM-90-24	90-305V	24V	3.67A	90W	100-0.15 (100-10)	IP67
	PWM-120-24	90-305V	24V	5.0A	120W	100-0.15 (100-10)	IP67
DALI	LIN100A1	120-277V	24V	1A per channel	100W	100-0.1	IP66/IP40
DMX RGB	LIN100A1	120-277V	24V	1.33A per channel	100W	100-0.1	IP66/IP40
DMX RGBW	LIN100A1	120-277A	24V	1A per channel	100W	100-0.1	IP66/IP40

Flicker Free Options - Combination of PSU+ sub-controller

Control Mode	PSU (Order Code)	Sub-controller (Order Code)	Input Voltage AC	Output Voltage DC	Rated Output Current	Rated Power	Dim %	IP Rating PSU/ Sub-controller
0-10V or 1-10V	CEN-60-24	KKDM-06	90-295V	24V	2.5A	60W	100-0.9	IP67/IP20
	HLG-60H-24	KKDM-06	90-295V	24V	2.5A	60W	100-0.9	IP67/IP20
	HLG-100H-24	KKDM-06	90-295V	24V	4.0A	100W	100-0.9	IP67/IP20
	HLG-150H-24	KKDM-06	90-295V	24V	6.3A	150W	100-0.9	IP67/IP20
	HLG-240H-24	KKDM-06	90-295V	24V	10.0A	240W	100-0.9	IP67/IP20
DALI	CEN-60-24	KKDL-02/03	90-295V	24V	2.5A	60W	100-0.1	IP67/IP20
	HLG-60H-24	KKDL-02/03	90-305V	24V	2.5A	60W	100-0.1	IP67/IP20
	HLG-100H-24	KKDL-02/03	90-305V	24V	4.0A	100W	100-0.1	IP67/IP20
	HLG-150H-24	KKDL-02/03	90-305V	24V	6.3A	150W	100-0.1	IP67/IP20
	HLG-240H-24	KKDL-02/03	90-305V	24V	10.0A	240W	100-0.1	IP67/IP20
DMX RGB	CEN-60-24	KKSC-05	90-295V	24V	2.5A	60W	100-0.9	IP67/IP20
	HLG-60H-24	KKSC-05	90-305V	24V	2.5A	60W	100-0.9	IP67/IP20
	HLG-100H-24	KKSC-05	90-305V	24V	4A	100W	100-0.9	IP67/IP20
	HLG-150H-24	KKSC-05	90-305V	24V	6.3A	150W	100-0.9	IP67/IP20
	HLG-240H-24	KKSC-05	90-305V	24V	10.0A	240W	100-0.9	IP67/IP20

¹ The items shown above cover the most frequently used specification but does not exhaust the possible options

² PSU and/or driver can be chosen from the table, or KKDC may recommend the best option upon receipt of the controls requirement and installation environment

³ Electrical shop drawing will include detailed information of PSU and relevant control drivers

⁴ Cut sheets are available on the controls section of www.kkdc.lighting or upon request