

Linear

# MoMo 512 Fixture Guide

# KKDÖ

Indoor/Outdoor | Surface | Max output up to 2370lm/m (720lm/ft)

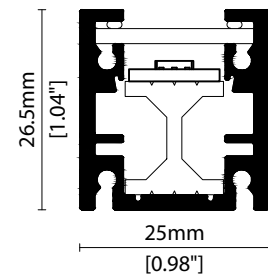


## Key applications

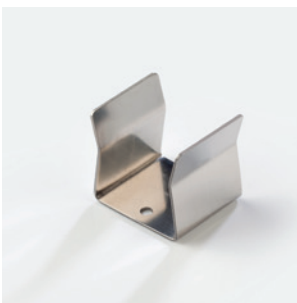
- ✓ Bathrooms
- ✓ Building façades
- ✓ Interior/Exterior
- ✓ Mirror back lighting
- ✓ Public spaces
- ✓ Retail display
- ✓ Under bench
- ✓ Wall grazing
- ✓ Window Reveal

## Key features

- ✓ Custom lengths
- ✓ Diffusion: Homogenous
- ✓ Direct view
- ✓ Extensive CCT range
- ✓ Form factor: Medium
- ✓ IP54
- ✓ IP67
- ✓ Output max



## MOUNTING METHODS



KKCP-03 Clip



KKCP-09 Lock clip



KKBK-07 Fixing plate



KKBK-21 Adjustable bracket

Linear

# MoMo 512

## Specification sheet



<b>Dimension</b>	H26.5/W25/L91.4-2020mm* (H1.04/W0.98/L3.60-79.53in*) *Nano Louvre = 1020mm/40.16in Max
<b>PCB increment</b>	71.4mm increment/2000mm* (2.81in increment/78.74in*) *Nano Louvre = 1000mm/39.37in Max
<b>LED pitch</b>	11.9mm - 84LED/m (0.47in - 26LED/ft)
<b>Chip</b>	<b>s/e-line</b> Toyoda Gosei <b>k-line</b> Toyoda Gosei or Equivalent
<b>Beam angle</b>	100° (Clear)/23° (Clear+KKLN-03 Lens)/95° (Diffused)/35° (Diffused+Nano Louvre)
<b>Colours</b>	<b>s/e-line</b> 1900K/2100K/2300K/2500K/2700K/3000K/3500K/4000K/5000K <b>k-line</b> 1900K/2100K/2300K/2500K/2700K/3000K/3500K/4000K/5000K
<b>Bin/Step</b>	<b>s-line</b> 2-step MacAdam ellipse <b>e/k-line</b> 3-step MacAdam ellipse
<b>CRI</b>	≥ 90
<b>Lifetime</b>	50,000 hours @ 25°C (50,000 hours @ 77°F)
<b>Operating temp</b>	T <sub>a</sub> = -20 to 40°C (T <sub>c</sub> max = 62.6°C) T <sub>a</sub> = -13 to 113°F (T <sub>c</sub> max = 149°F)
<b>IP rating</b>	IP54/IP67
<b>Finish</b>	Silver anodised
<b>Cover/lens</b>	Clear/Clear + 23° lens option (KKLN-03)/Diffused/Diffused + Nano Louvre
<b>Mounting</b>	Surface mounting via clips or brackets
<b>Power feed</b>	Sheathed hardwire tails or male/female connectors
<b>Control</b>	0-10V/1-10V/DMX/DALI



### LED Grading Key

#### Exclusive Grade

- s-line\***  
2-step CCT range
- e-line\***  
3-step CCT range

\*KKDC tuned CCT range

#### Base Grade

- k-line**  
3-step commercial range  
Energy Star CCTs

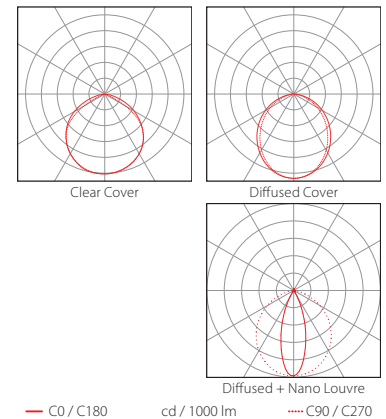
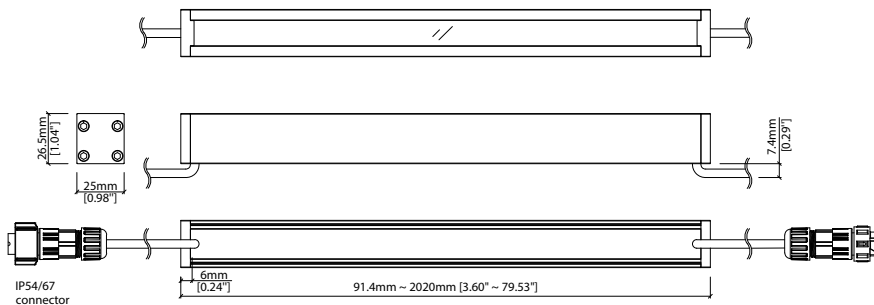
### PERFORMANCE DATA @ 3000K

Power Consumption	Supply voltage	Supply current
30.2W/m (9.2W/ft)	24V DC	1.26A/m (0.38A/ft)

### Colour Rendering Index (CRI)

	R1	R2	R3	R4	R5	R6	R7	R8	R9	R10	R11	R12	R13	R14
<b>k-line</b>	94	97	98	93	93	96	92	83	60	93	94	82	95	99

	Clear	Clear + 23° (KKLN-03)	Diffused	Diffused + Nano Louvre	CRI	R9	Rf	Rg
<b>s/e-line</b>	2370lm/m (720lm/ft) 78.3lm/W	1182lm/m (360lm/ft) 39.2lm/W	910lm/m (278lm/ft) 30.1lm/W	229lm/m (70lm/ft) 7.6lm/W	90	50	-	-
<b>k-line</b>	2130lm/m (649lm/ft) 70.5lm/W	958lm/m (292lm/ft) 31.7lm/W	960lm/m (293lm/ft) 31.9lm/W	242lm/m (74lm/ft) 8lm/W	92	60	-	-



Data derived from independent UKAS/IESNA LM-79-08 accredited testing of production samples.

### FIXTURE

Model	Finish	Cover/Lens <sup>1</sup>	Grade <sup>2</sup>	LED	Colour (CCT)	Length Availability <sup>3</sup>	IP	Cable Length	Power Feed <sup>4</sup>	Input																																										
MoMo	MM	Silver Anodised	SA	Clear	B	s	s	512	1900K	19	m	91.4-2020mm 71.4mm increments	IP54	54	300mm/11.81"	0300	Single ø4.3mm sheath tail	S00A	DC 24V	g																																
																					Clear + 23° (KKLN-03)	A	e	e	2100K	21	i	3.60-79.53in 2.81in increments	IP67 <sup>5</sup>	67	Double ø4.3mm sheath tail	D00A																				
																																	Diffused	C	k	2500K	25	(Specify length code OR total run length)	Single ø4.3mm sheath IP67 connector <sup>6</sup>	S67A												
																																									Diffused + Nano Louvre <sup>3</sup>	CN	3000K	30	Double ø4.3mm sheath IP67 connector <sup>6</sup>	D67A						
																																															3500K	35				
																																																	4000K	40		
																																																			5000K	50

<sup>1</sup> Refer to **Cover/Lens Options** on **Options** pages

<sup>2</sup> Refer to **LED Grading Key** on **Specification sheet** page

<sup>3</sup> Refer to **Length Availability List** or enter total run length instead of length code

<sup>4</sup> Refer to **Power Feed Options** on **Options** pages

<sup>5</sup> Max length available with Nano Louvre is 1020mm

<sup>6</sup> Due to the clear, flush potted polyurethane top layer on IP67 MoMo a colour shift of +/- 20K should be expected

<sup>7</sup> IP67 connectors are used for both IP67 and IP54 product housings

### Code Example:

MM	-	SA	-	C	-	s	-	512	-	30	-	m	520	-	67	-	0300	-	D67A	-	g
MoMo		Silver Anodised		Diffused		s		512		3000K		519.8mm		IP67		300mm/11.81"		Double ø4.3mm sheath IP67 connector		DC 24V	

### ACCESSORIES

#### Mounting Accessories

KKCP-03	Clip (1no.)
KKCP-53	Clip (500no.)w
KKCP-09	Lock Clip
KKBK-07	Fixing plate
KKBK-21	Adjustable bracket

\* Refer to **Mounting accessories** on **Accessories** pages

#### Connection Accessories

CN67-2P-0300	IP67 2 PIN male & female 300mm/11.81" pair
CN67-2P-1000	IP67 2 PIN male & female 1000mm/39.37" pair
CN67-2P-3000	IP67 2 PIN male & female 3000mm/118.11" pair

\* Refer to **Power feed** on **Accessories** pages

#### Exterior Junction Boxes

KKJB-07	IP67 Slim J-Box
KKJB-07R	Potting Resin for IP67 Slim J-Box

\* Refer to **Exterior Junction Boxes** on **Accessories** pages

#### PSU/Driver

0-10V/1-10V/DALI/DMX

\* Refer to **Driver/PSU Options** page for details or provide requirement and KKDC to offer the suitable option

### LED ENGINE VARIANTS (LED STRIP TYPE)

Colour	Output	LED	Lumen/m	Lumen/ft	W/m	W/ft	Spec Doc	Length	Increment
Single CCT	Low	352	420	127	5.5	1.67	MoMo 352	103.3-2020mm (4.07-79.53in)	83.3mm (3.28in)
	Mid	504	990	302	12.5	3.81	MoMo 504	120-2020mm (4.72-79.53in)	100mm (3.94in)
	High	508	1370	418	17.5	5.33	MoMo 508	91.4-2020mm (3.60-79.53in)	71.4mm (2.81in)
	<b>Max</b>	<b>512</b>	<b>2370</b>	<b>720</b>	<b>30.2</b>	<b>9.2</b>	<b>MoMo 512</b>	<b>91.4-2020mm (3.60-79.53in)</b>	<b>71.4mm (2.81in)</b>
Warm Dim/Dynamic White	Max	040	3960	1207	40	12.19	MoMo A040	97-1520mm (3.82-59.84in)	38.46mm (1.51in)
	Mid	207	720	219	11	3.35	MoMo 207	103.3-2020mm (4.07-79.53in)	83.3mm (3.28in)
	Mid	208	1210	409	15.6	4.75	MoMo 208	186.7-2020mm (7.35-79.53in)	166.7mm (6.56in)
RGB		501	Red 124 Green 252 Blue 41 RGB 398	Red 38 Green 77 Blue 12 RGB 121	15.6	4.75	MoMo RGB	103.3-2020mm (4.07-79.53in)	83.3mm (3.28in)

\* Performance data: A/s/e-line, clear cover, 3000K

# MoMo 512

## Length Availability List

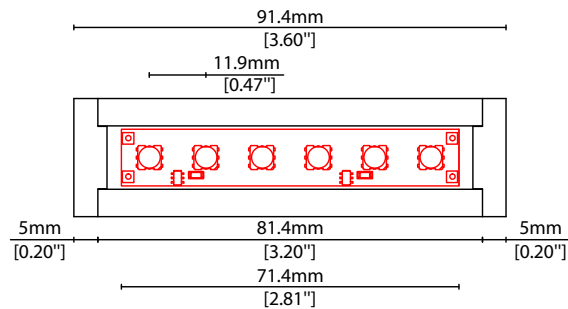


Length Code		Fixture Length <sup>1</sup>		LED Strip <sup>2</sup>		End Cap Dimension <sup>3</sup>		Wattage (W)	Output (lm)	
Metric	Imperial(US)	Metric	Imperial(US)	Metric	Imperial(US)	Metric	Imperial(US)		3000K (Test Data)	Range Data
m0091	i0004	91mm	3.60in	71mm	2.81in	10mm	0.39in	2.16	169	18-176
m0163	i0006	163mm	6.41in	143mm	5.62in	10mm	0.39in	4.32	338	36-352
m0234	i0009	234mm	9.22in	214mm	8.44in	10mm	0.39in	6.48	507	54-528
m0306	i0012	306mm	12.04in	286mm	11.25in	10mm	0.39in	8.64	677	73-704
m0377	i0015	377mm	14.85in	357mm	14.06in	10mm	0.39in	10.80	846	91-879
m0448	i0018	449mm	17.66in	429mm	16.87in	10mm	0.39in	12.96	1015	109-1055
m0520	i0020	520mm	20.47in	500mm	19.69in	10mm	0.39in	15.12	1184	127-1231
m0591	i0023	591mm	23.29in	571mm	22.50in	10mm	0.39in	17.28	1353	145-1407
m0663	i0026	663mm	26.10in	643mm	25.31in	10mm	0.39in	19.44	1522	163-1583
m0734	i0029	734mm	28.91in	714mm	28.12in	10mm	0.39in	21.60	1691	181-1759
m0806	i0032	806mm	31.72in	786mm	30.93in	10mm	0.39in	23.76	1860	200-1935
m0877	i0035	877mm	34.53in	857mm	33.75in	10mm	0.39in	25.92	2030	218-2111
m0948	i0037	949mm	37.35in	929mm	36.56in	10mm	0.39in	28.08	2199	236-2287
m1020	i0040	1020mm	40.16in	1000mm	39.37in	10mm	0.39in	30.24	2368	254-2463
m1091	i0043	1091mm	42.97in	1071mm	42.18in	10mm	0.39in	32.40	2537	272-2638
m1163	i0046	1163mm	45.78in	1143mm	45.00in	10mm	0.39in	34.56	2706	290-2814
m1234	i0049	1234mm	48.59in	1214mm	47.81in	10mm	0.39in	36.72	2875	308-2990
m1306	i0051	1306mm	51.41in	1286mm	50.62in	10mm	0.39in	38.88	3044	327-3166
m1377	i0054	1377mm	54.22in	1357mm	53.43in	10mm	0.39in	41.04	3213	345-3342
m1448	i0057	1449mm	57.03in	1429mm	56.24in	10mm	0.39in	43.20	3383	363-3518
m1520	i0060	1520mm	59.84in	1500mm	59.06in	10mm	0.39in	45.36	3552	381-3694
m1591	i0063	1591mm	62.66in	1571mm	61.87in	10mm	0.39in	47.52	3721	399-3870
m1663	i0065	1663mm	65.47in	1643mm	64.68in	10mm	0.39in	49.68	3890	417-4046
m1734	i0068	1734mm	68.28in	1714mm	67.49in	10mm	0.39in	51.84	4059	435-4221
m1806	i0071	1806mm	71.09in	1786mm	70.31in	10mm	0.39in	54.00	4228	454-4397
m1877	i0074	1877mm	73.90in	1857mm	73.12in	10mm	0.39in	56.16	4397	472-4573
m1948	i0077	1949mm	76.72in	1929mm	75.93in	10mm	0.39in	58.32	4566	490-4749
m2020	i0080	2020mm	79.53in	2000mm	78.74in	10mm	0.39in	60.48	4736	508-4925

<sup>1</sup> Actual total overall length of light fixture (LED strip + end caps + void/wire hole)

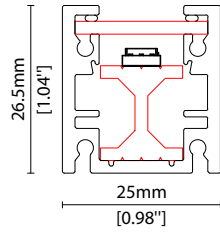
<sup>2</sup> Actual length of PCB strip

<sup>3</sup> Actual length of 2x end caps

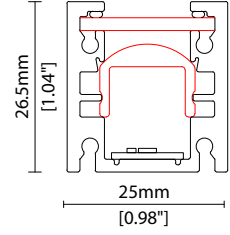


### COVER/LENS OPTIONS

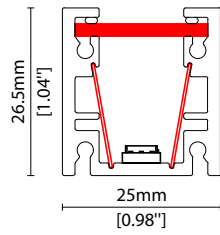
\* Options are an integral part of the fixture ordering codes. Please refer to **Code Table** pages.



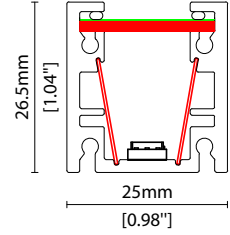
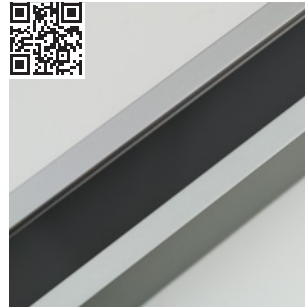
**B** Clear Cover



**A** Clear Cover +  
23° (KKLN-03) lens



**C** Diffused Cover

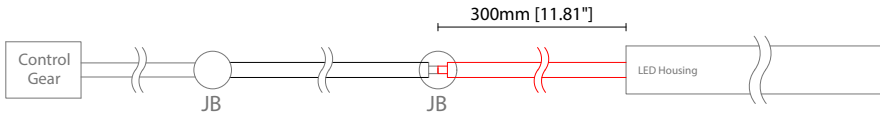


**CN** Diffused Cover + Nano Louvre

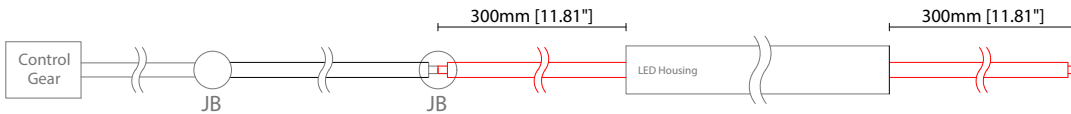
### POWER FEED OPTIONS

\* Options are an integral part of the fixture ordering codes. Please refer to **Code Table** pages.

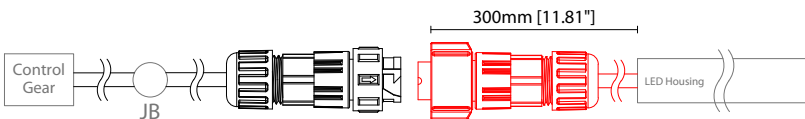
**0300 S00A 300mm (11.81") Single Ø4.3mm sheath tail**



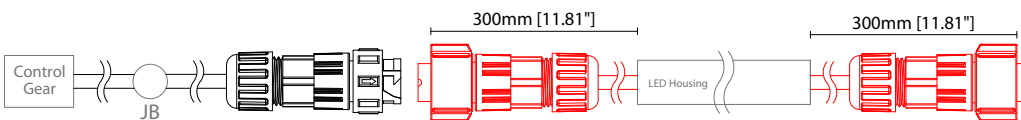
**0300 D00A 300mm (11.81") Double Ø4.3mm sheath tail**



**0300 S67A 300mm (11.81") Single ø4.3mm sheath IP67 connector**

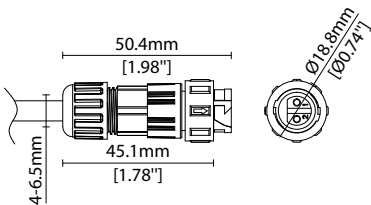


**0300 D67A 300mm (11.81") Double ø4.3mm sheath IP67 connector**

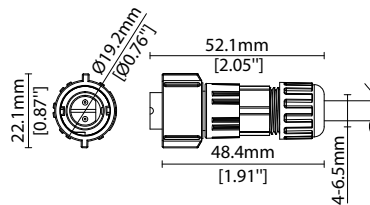


### IP67 2 Pin Connector

Female connector  
2 PIN (IP67)



Male connector  
2 PIN (IP67)

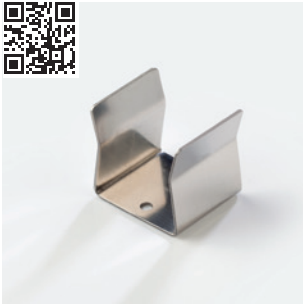


### Key

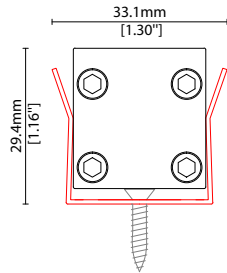
- Control Gear Power supply, sub-controllers & control systems
- JB Junction box / cable connection

## MOUNTING ACCESSORIES

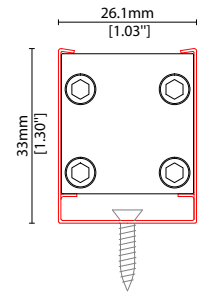
Note: Accessories are to be ordered separately with corresponding code shown below.



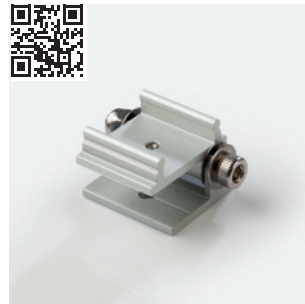
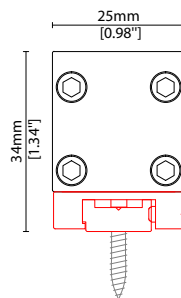
**KKCP-03** (1no.)  
**KKCP-53** (500no.)  
 Clip (allow 3 per metre/40in)  
 S/Steel finish  
 L25/W33.1/H29.4mm  
 (L0.98/W1.3/H1.16")



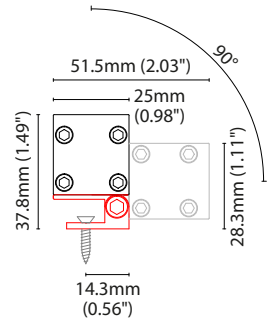
**KKCP-09**  
 Lock clip (allow 2 per metre/40in)  
 S/Steel finish  
 L25/W26.1/H33mm  
 (L0.98/W1.03/H1.3")



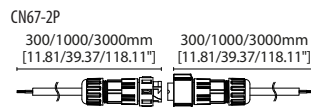
**KKBK-07**  
 Fixing plate (allow 2 per metre/40in)  
 Anodised aluminium finish  
 L50/W25/H34mm  
 (L1.97/W0.98/H1.34")  
 Pre-assembled in factory



**KKBK-21**  
 Adjustable bracket  
 (allow 2 per metre/40in)  
 Anodised aluminium finish  
 L34/W25/H37.8mm  
 (L1.34/W0.98/H1.49")  
 Pre-assembled in factory



## POWER FEED



**CN67-2P-0300** 300mm (11.81in) pair  
**CN67-2P-1000** 1000mm (39.37in) pair  
**CN67-2P-3000** 3000mm (118.11in) pair  
 IP67  
 2 PIN male + female connector set



### EXTERIOR JUNCTION BOXES



**KKJB-07**

IP67 Slim J-Box  
(including type A,B,C, D bushings)



**KKJB-07R**

Potting resin for IP67 Slim J-Box

### KKDC CONTROL



IP20  
Plastic housing  
L170/W59/H29mm  
(L6.69/W2.32/H1.14in)

**KKDM-06** 1-10V

visDIM dimmable sub-controller  
(4 x 8A max @ 12-36V)



IP20  
Plastic housing  
L170/W53.4/H28mm  
(L6.69/W2.10/H1.10in)

**KKSC-05** DMX

visDIM dimmable sub-controller  
(4 x 5A max @ 12-36V)



IP20  
Plastic housing  
L170/W59/H29mm  
(L6.69/W2.32/H1.14in)

**KKDL-02** DALI

visDIM dimmable sub-controller  
(4 x 8A max @ 12-36V)



IP20  
Plastic housing  
L166/W53.4/H23mm  
(L6.54/W2.10/H0.91in)

**KKDL-03** DALI

visDIM dimmable sub-controller  
(4 x 5A max @ 12-36V)



### AVAILABLE PSU OPTIONS

Control Mode	PSU (Order Code)	Input Voltage AC	Output Voltage DC	Rated Output Current	Rated Power	Dim %	IP Rating
Switched	CEN-60-24	90-295V	24V	2.5A	60W	-	IP67
	HLG-60H-24	90-305V	24V	2.5A	60W	-	IP67
	HLG-100H-24	90-305V	24V	4.0A	100W	-	IP67
	HLG-150H-24	90-305V	24V	6.3A	150W	-	IP67
	HLG-240H-24	90-305V	24V	10A	240W	-	IP67
0-10V (1-10V)	PWM-40-24	90-305V	24V	1.67A	40W	100-0.15 (100-10)	IP67
	PWM-60-24	90-305V	24V	2.5A	60W	100-0.15 (100-10)	IP67
	PWM-90-24	90-305V	24V	3.67A	90W	100-0.15 (100-10)	IP67
	PWM-120-24	90-305V	24V	5.0A	120W	100-0.15 (100-10)	IP67
DALI	LIN100A1	120-277V	24V	1A per channel	100W	100-0.1	IP66/IP40
DMX RGB	LIN100A1	120-277V	24V	1.33A per channel	100W	100-0.1	IP66/IP40
DMX RGBW	LIN100A1	120-277A	24V	1A per channel	100W	100-0.1	IP66/IP40

### Flicker Free Options - Combination of PSU+ sub-controller

Control Mode	PSU (Order Code)	Sub-controller (Order Code)	Input Voltage AC	Output Voltage DC	Rated Output Current	Rated Power	Dim %	IP Rating PSU/ Sub-controller
0-10V or 1-10V	CEN-60-24	KKDM-06	90-295V	24V	2.5A	60W	100-0.9	IP67/IP20
	HLG-60H-24	KKDM-06	90-295V	24V	2.5A	60W	100-0.9	IP67/IP20
	HLG-100H-24	KKDM-06	90-295V	24V	4.0A	100W	100-0.9	IP67/IP20
	HLG-150H-24	KKDM-06	90-295V	24V	6.3A	150W	100-0.9	IP67/IP20
	HLG-240H-24	KKDM-06	90-295V	24V	10.0A	240W	100-0.9	IP67/IP20
DALI	CEN-60-24	KKDL-02/03	90-295V	24V	2.5A	60W	100-0.1	IP67/IP20
	HLG-60H-24	KKDL-02/03	90-305V	24V	2.5A	60W	100-0.1	IP67/IP20
	HLG-100H-24	KKDL-02/03	90-305V	24V	4.0A	100W	100-0.1	IP67/IP20
	HLG-150H-24	KKDL-02/03	90-305V	24V	6.3A	150W	100-0.1	IP67/IP20
	HLG-240H-24	KKDL-02/03	90-305V	24V	10.0A	240W	100-0.1	IP67/IP20
DMX RGB	CEN-60-24	KKSC-05	90-295V	24V	2.5A	60W	100-0.9	IP67/IP20
	HLG-60H-24	KKSC-05	90-305V	24V	2.5A	60W	100-0.9	IP67/IP20
	HLG-100H-24	KKSC-05	90-305V	24V	4A	100W	100-0.9	IP67/IP20
	HLG-150H-24	KKSC-05	90-305V	24V	6.3A	150W	100-0.9	IP67/IP20
	HLG-240H-24	KKSC-05	90-305V	24V	10.0A	240W	100-0.9	IP67/IP20

<sup>1</sup> The items shown above cover the most frequently used specification but does not exhaust the possible options

<sup>2</sup> PSU and/or driver can be chosen from the table, or KKDC may recommend the best option upon receipt of the controls requirement and installation environment

<sup>3</sup> Electrical shop drawing will include detailed information of PSU and relevant control drivers

<sup>4</sup> Cut sheets are available on the controls section of [www.kkdc.lighting](http://www.kkdc.lighting) or upon request