

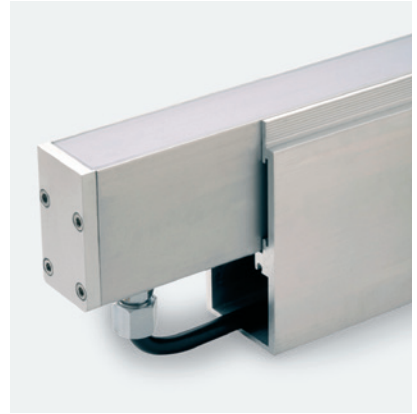
Linear

MoMo-F 352

Fixture Guide

KKDÖ

Indoor/Outdoor | Recessed | Low output up to 140lm/m (43lm/ft)

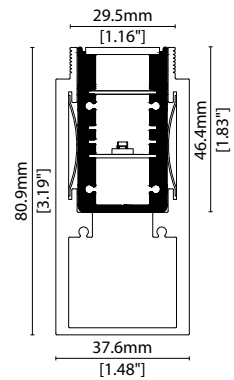


Key applications

- ✓ Bathrooms
- ✓ Interior/Exterior
- ✓ Orientation lighting
- ✓ Public spaces
- ✓ Uplighting
- ✓ Wall grazing

Key features

- ✓ Custom lengths
- ✓ Diffusion: Homogenous
- ✓ Direct view
- ✓ Extensive CCT range
- ✓ Form factor: Large
- ✓ In-ground walkover
- ✓ IP67
- ✓ Output low



MOUNTING METHODS



KKFR-03 Ground box

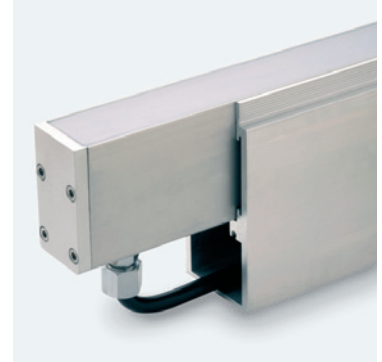
Linear

MoMo-F 352

Specification sheet



Dimension	H46.4/W25/L93.3-2010mm (H1.83/W0.98/L3.67-79.13in)
PCB increment	83.3mm increment/2000mm max (3.28in increment/78.74in max)
LED pitch	13.9mm - 72LED/m (0.55in - 22LED/ft)
Chip	s/e-line Toyoda Gosei k-line Toyoda Gosei or Equivalent
Beam angle	110° (Diffused Cover)
Colours	s/e-line 1900K/2100K/2300K/2500K/2700K/3000K/3500K/4000K/5000K Single colours: Red/Green/Blue/Orange/Amber k-line 1900K/2100K/2300K/2500K/2700K/3000K/3500K/4000K/5000K
Bin/Step	s-line 2-step MacAdam ellipse e/k-line 3-step MacAdam ellipse
CRI	≥ 90
Lifetime	50,000 hours @ 25°C (50,000 hours @ 77°F)
Operating temp	T _a = -25 to 60°C (T _c max = 65°C) T _a = -13 to 140°F (T _c max = 149°F)
IP rating	IP67
Finish	Silver anodised
Cover/lens	Diffused
Mounting	Ground recessed
Power feed	Sheathed hardwire tails or male/female connectors
Control	0-10V/1-10V/DMX/DALI
IK Rating	IEC 62262:2010/IK08



LED Grading Key

Exclusive Grade

- s** s-line*
2-step CCT range
- e** e-line*
3-step CCT range

*KKDC tuned CCT range

Base Grade

- k** k-line
3-step commercial range
Energy Star CCTs

PERFORMANCE DATA @ 3000K

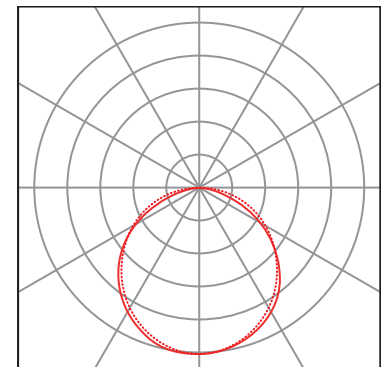
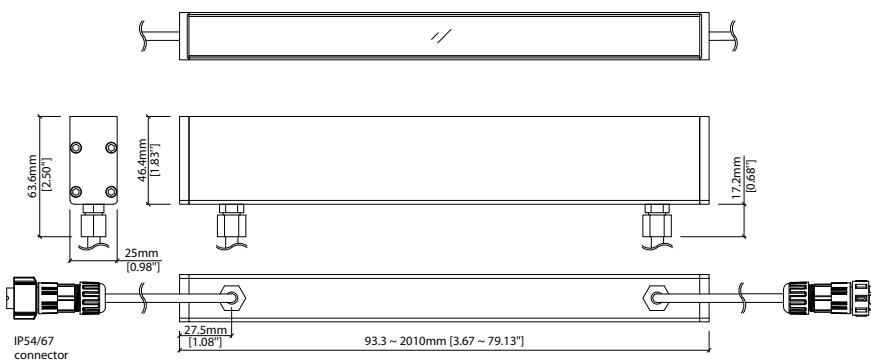
Power consumption	Supply voltage	Supply current
5.5W/m (1.67W/ft)	24V DC	0.23A/m (0.07A/ft)

Colour Rendering Index (CRI)

	R1	R2	R3	R4	R5	R6	R7	R8	R9	R10	R11	R12	R13	R14
k-line	94	97	98	93	93	96	92	83	60	93	94	82	95	99

Diffused Cover

	lm/m	lm/W	CRI	R9	Rf	Rg
s/e-line	140lm/m (43lm/ft)	25.4lm/W	93	62	-	-
k-line	140lm/m (43lm/ft)	25lm/W	92	60	-	-



Data derived from independent UKAS/IESNA LM-79-08 accredited testing of production samples.

FIXTURE

Model	Finish	Cover ¹	Grade ²	LED	Colour (CCT)	Length Availability ³	IP	Cable Length	Power Feed ⁴	Input											
MoMo-F	MF	Silver Anodised	SA	Diffused	C	s	s	352	1900K	19	m	93.3-2010mm 83.3mm increments	IP67	67	300mm/11.81"	0300	Single ø6.3mm sheath tail	S00B	DC 24V	g	
									2100K	21											
									2300K	23											
									2500K	25											
									2700K	27											
									3000K	30											
									3500K	35											
									4000K	40											
									5000K	50											
									RED	RED											s only
									GREEN	GRN											
									BLUE	BLU											
									ORANGE	ORN											

¹ Refer to Cover/Lens Options on Options pages

² Refer to LED Grading Key on Specification sheet page

³ Refer to Length Availability List or enter total run length instead of length code

⁴ Refer to Power Feed Options on Options pages

Code Example:

MF	-	SA	-	C	-	s	-	352	-	35	-	m	-	510	-	67	-	0300	-	D00B	-	g
MoMo-F		Silver Anodised		Diffused		s		352		3500K		509.8mm		IP67		300mm/11.81"		Double ø6.3mm sheath tail		DC 24V		

ACCESSORIES

Mounting Accessories

KKFR-03 Ground box

* Refer to Mounting accessories on Accessories pages

Connection Accessories

CN67-2P-0300 IP67 2 PIN male & female 300mm/11.81" pair

CN67-2P-1000 IP67 2 PIN male & female 1000mm/39.37" pair

CN67-2P-3000 IP67 2 PIN male & female 3000mm/118.11" pair

* Refer to Power feed on Accessories pages

Exterior Junction Boxes

KKJB-07 IP67 Slim J-Box

KKJB-07R Potting Resin for IP67 Slim J-Box

* Refer to Exterior Junction Boxes on Accessories pages

PSU/Driver

0-10V/1-10V/DALI/DMX

* Refer to Driver/PSU Options page for details or provide requirement and KKDC to offer the suitable option

LED ENGINE VARIANTS (LED STRIP TYPE)

Colour	Output	LED	Lumen/m	Lumen/ft	W/m	W/ft	Spec Doc	Length	Increment
Single CCT	Low	352	140	43	5.5	1.67	MoMo-F 352	93.3-2010mm (3.67-79.13in)	83.3mm (3.28in)
	Low	504	340	104	12.5	3.81	MoMo-F 504	110-2010mm (4.33-79.13in)	100mm (3.94in)
	Low	508	470	143	17.5	5.33	MoMo-F 508	81.4-2010mm (3.20-79.13in)	71.4mm (2.81in)
	Mid	512	810	247	30.2	9.2	MoMo-F 512	81.4-2010mm (3.20-79.13in)	71.4mm (2.81in)
	High	040	1640	500	40	12.19	MoMo-F A040	87-1510mm (3.43-59.45in)	38.46mm (1.51in)
RGB		501	Red 41 Green 88 Blue 14 RGB 127	Red 12 Green 27 Blue 44 RGB 39	15.6	4.75	MoMo-F RGB	93.3-2010mm (3.67-79.13in)	83.3mm (3.28in)

* Performance data: A/s/e-line, diffused cover, 3000K

MoMo-F 352

Length Availability List

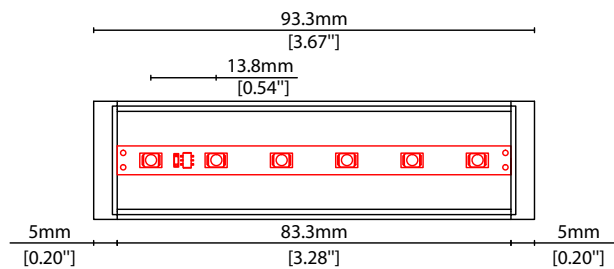


Length Code		Fixture Length ¹		LED Strip ²		End Cap Dimension ³		Wattage (W)	Output (lm)	
Metric	Imperial(US)	Metric	Imperial(US)	Metric	Imperial(US)	Metric	Imperial(US)		3000K (Test Data)	Range Data
m0093	i0004	93mm	3.67in	83mm	3.28in	10mm	0.39in	0.46	11	7-12
m0177	i0007	177mm	6.96in	167mm	6.56in	10mm	0.39in	0.92	23	15-24
m0260	i0010	260mm	10.24in	250mm	9.84in	10mm	0.39in	1.37	34	22-36
m0343	i0014	343mm	13.52in	333mm	13.12in	10mm	0.39in	1.83	46	30-48
m0427	i0017	427mm	16.80in	417mm	16.41in	10mm	0.39in	2.29	57	37-60
m0510	i0020	510mm	20.08in	500mm	19.69in	10mm	0.39in	2.75	69	45-71
m0593	i0023	593mm	23.36in	583mm	22.97in	10mm	0.39in	3.21	80	52-83
m0677	i0027	677mm	26.64in	667mm	26.25in	10mm	0.39in	3.67	92	60-95
m0760	i0030	760mm	29.92in	750mm	29.53in	10mm	0.39in	4.12	103	67-107
m0843	i0033	843mm	33.20in	833mm	32.81in	10mm	0.39in	4.58	115	74-119
m0927	i0036	927mm	36.49in	917mm	36.09in	10mm	0.39in	5.04	126	82-131
m1010	i0040	1010mm	39.77in	1000mm	39.37in	10mm	0.39in	5.50	137	89-143
m1093	i0043	1093mm	43.05in	1083mm	42.65in	10mm	0.39in	5.96	149	97-155
m1177	i0046	1177mm	46.33in	1167mm	45.94in	10mm	0.39in	6.42	160	104-167
m1260	i0050	1260mm	49.61in	1250mm	49.22in	10mm	0.39in	6.87	172	112-179
m1343	i0053	1343mm	52.89in	1333mm	52.50in	10mm	0.39in	7.33	183	119-191
m1427	i0056	1427mm	56.17in	1417mm	55.78in	10mm	0.39in	7.79	195	127-203
m1510	i0059	1510mm	59.45in	1500mm	59.06in	10mm	0.39in	8.25	206	134-214
m1593	i0063	1593mm	62.73in	1583mm	62.34in	10mm	0.39in	8.71	218	141-226
m1677	i0066	1677mm	66.02in	1667mm	65.62in	10mm	0.39in	9.17	229	149-238
m1760	i0069	1760mm	69.30in	1750mm	68.90in	10mm	0.39in	9.62	241	156-250
m1843	i0073	1843mm	72.58in	1833mm	72.18in	10mm	0.39in	10.08	252	164-262
m1927	i0076	1927mm	75.86in	1917mm	75.47in	10mm	0.39in	10.54	264	171-274
m2010	i0079	2010mm	79.14in	2000mm	78.75in	10mm	0.39in	11.00	275	179-286

¹ Actual total overall length of light fixture (LED strip + end caps + void/wire hole)

² Actual length of PCB strip

³ Actual length of 2x end caps





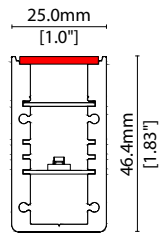
MoMo-F 352

Options



COVER/LENS OPTIONS

* Options are an integral part of the fixture ordering codes. Please refer to **Code Table** pages.

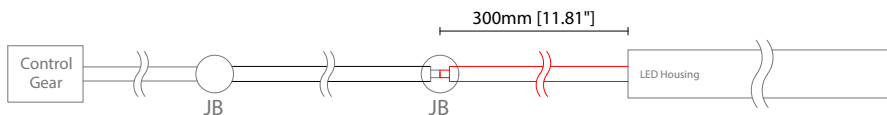


C Diffused Cover
W25.0/H46.4mm (W1.00/H1.83")

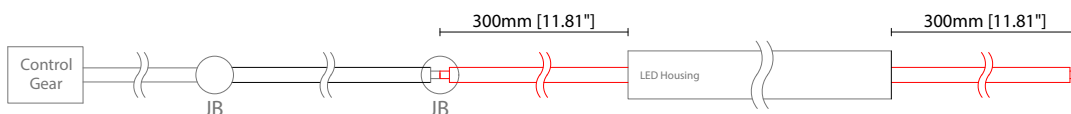
POWER FEED OPTIONS

* Options are an integral part of the fixture ordering codes. Please refer to **Code Table** pages.

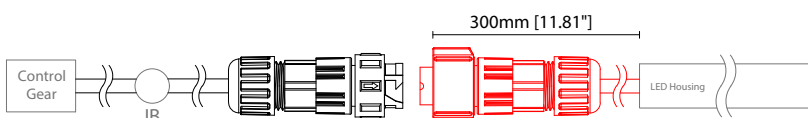
0300 S00B 300mm (11.81") Single Ø6.3mm sheath tail



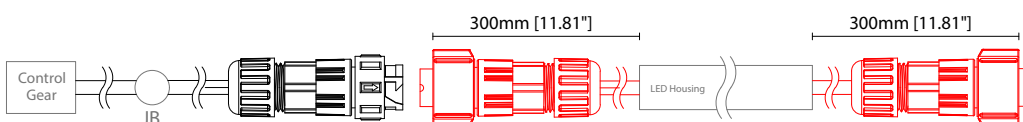
0300 D00B 300mm (11.81") Double Ø6.3mm sheath tail



0300 S67B 300mm (11.81") Single Ø6.3mm sheath IP67 connector

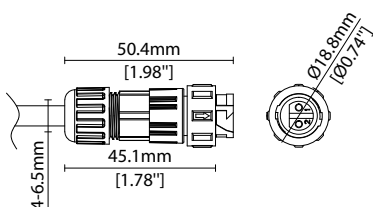


0300 D67B 300mm (11.81") Double Ø6.3mm sheath IP67 connector

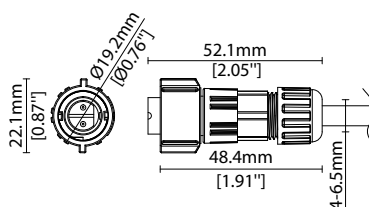


IP67 2 Pin Connector

Female connector
2 PIN (IP67)



Male connector
2 PIN (IP67)

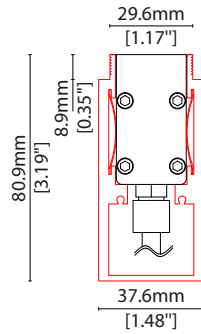


Key

- Control Gear Power supply, sub-controllers & control systems
- JB Junction box / cable connection

MOUNTING ACCESSORIES

Note: Accessories are to be ordered separately with corresponding code shown below.



KKFR-03*

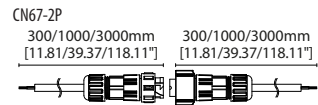
Ground box

Anodised aluminium finish

W37.6/H80.9mm (W1.48/H3.19")

* Specify length to match MoMo-F

POWER FEED



CN67-2P-0300 300mm (11.81in) pair

CN67-2P-1000 1000mm (39.37in) pair

CN67-2P-3000 3000mm (118.11in) pair

IP67

2 PIN male + female connector set

EXTERIOR JUNCTION BOXES



KKJB-07

IP67 Slim J-Box
(including type A,B,C, D bushings)



KKJB-07R

Potting resin for IP67 Slim J-Box

Linear

MoMo-F 352 Accessories

KKDC

KKDC CONTROL



IP20
Plastic housing
L170/W59/H29mm
(L6.69/W2.32/H1.14in)

KKDM-06 1-10V

visDIM dimmable sub-controller
(4 x 8A max @ 12-36V)



IP20
Plastic housing
L170/W53.4/H28mm
(L6.69/W2.10/H1.10in)

KKSC-05 DMX

visDIM dimmable sub-controller
(4 x 5A max @ 12-36V)



IP20
Plastic housing
L170/W59/H29mm
(L6.69/W2.32/H1.14in)

KKDL-02 DALI

visDIM dimmable sub-controller
(4 x 8A max @ 12-36V)



IP20
Plastic housing
L166/W53.4/H23mm
(L6.54/W2.10/H0.91in)

KKDL-03 DALI

visDIM dimmable sub-controller
(4 x 5A max @ 12-36V)

AVAILABLE PSU OPTIONS

Control Mode	PSU (Order Code)	Input Voltage AC	Output Voltage DC	Rated Output Current	Rated Power	Dim %	IP Rating
Switched	CEN-60-24	90-295V	24V	2.5A	60W	-	IP67
	HLG-60H-24	90-305V	24V	2.5A	60W	-	IP67
	HLG-100H-24	90-305V	24V	4.0A	100W	-	IP67
	HLG-150H-24	90-305V	24V	6.3A	150W	-	IP67
	HLG-240H-24	90-305V	24V	10A	240W	-	IP67
0-10V (1-10V)	PWM-40-24	90-305V	24V	1.67A	40W	100-0.15 (100-10)	IP67
	PWM-60-24	90-305V	24V	2.5A	60W	100-0.15 (100-10)	IP67
	PWM-90-24	90-305V	24V	3.67A	90W	100-0.15 (100-10)	IP67
	PWM-120-24	90-305V	24V	5.0A	120W	100-0.15 (100-10)	IP67
DALI	LIN100A1	120-277V	24V	1A per channel	100W	100-0.1	IP66/IP40
DMX RGB	LIN100A1	120-277V	24V	1.33A per channel	100W	100-0.1	IP66/IP40
DMX RGBW	LIN100A1	120-277A	24V	1A per channel	100W	100-0.1	IP66/IP40

Flicker Free Options - Combination of PSU+ sub-controller

Control Mode	PSU (Order Code)	Sub-controller (Order Code)	Input Voltage AC	Output Voltage DC	Rated Output Current	Rated Power	Dim %	IP Rating PSU/ Sub-controller
0-10V or 1-10V	CEN-60-24	KKDM-06	90-295V	24V	2.5A	60W	100-0.9	IP67/IP20
	HLG-60H-24	KKDM-06	90-295V	24V	2.5A	60W	100-0.9	IP67/IP20
	HLG-100H-24	KKDM-06	90-295V	24V	4.0A	100W	100-0.9	IP67/IP20
	HLG-150H-24	KKDM-06	90-295V	24V	6.3A	150W	100-0.9	IP67/IP20
	HLG-240H-24	KKDM-06	90-295V	24V	10.0A	240W	100-0.9	IP67/IP20
DALI	CEN-60-24	KKDL-02/03	90-295V	24V	2.5A	60W	100-0.1	IP67/IP20
	HLG-60H-24	KKDL-02/03	90-305V	24V	2.5A	60W	100-0.1	IP67/IP20
	HLG-100H-24	KKDL-02/03	90-305V	24V	4.0A	100W	100-0.1	IP67/IP20
	HLG-150H-24	KKDL-02/03	90-305V	24V	6.3A	150W	100-0.1	IP67/IP20
	HLG-240H-24	KKDL-02/03	90-305V	24V	10.0A	240W	100-0.1	IP67/IP20
DMX RGB	CEN-60-24	KKSC-05	90-295V	24V	2.5A	60W	100-0.9	IP67/IP20
	HLG-60H-24	KKSC-05	90-305V	24V	2.5A	60W	100-0.9	IP67/IP20
	HLG-100H-24	KKSC-05	90-305V	24V	4A	100W	100-0.9	IP67/IP20
	HLG-150H-24	KKSC-05	90-305V	24V	6.3A	150W	100-0.9	IP67/IP20
	HLG-240H-24	KKSC-05	90-305V	24V	10.0A	240W	100-0.9	IP67/IP20

¹ The items shown above cover the most frequently used specification but does not exhaust the possible options

² PSU and/or driver can be chosen from the table, or KKDC may recommend the best option upon receipt of the controls requirement and installation environment

³ Electrical shop drawing will include detailed information of PSU and relevant control drivers

⁴ Cut sheets are available on the controls section of www.kkdc.lighting or upon request