

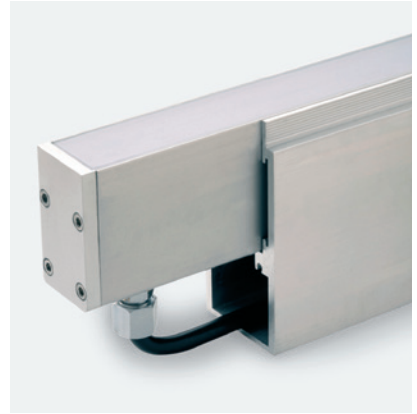
Linear

MoMo-F 512

Fixture Guide

KKDÖ

Indoor/Outdoor | Recessed | Mid output up to 810lm/m (248lm/ft)

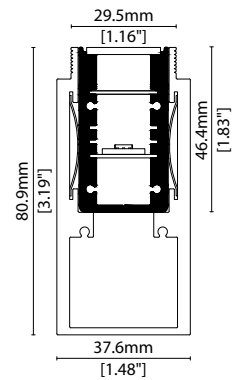


Key applications

- ✓ Bathrooms
- ✓ Interior/Exterior
- ✓ Orientation lighting
- ✓ Public spaces
- ✓ Uplighting
- ✓ Wall grazing

Key features

- ✓ Custom lengths
- ✓ Diffusion: Homogenous
- ✓ Direct view
- ✓ Extensive CCT range
- ✓ Form factor: Large
- ✓ In-ground walkover
- ✓ IP67
- ✓ Output mid



MOUNTING METHODS



KKFR-03 Ground box

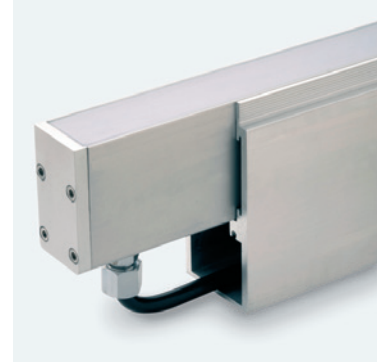
Linear

MoMo-F 512

Specification sheet



Dimension	H46.4/W25/L81.4-2010mm (H1.83/W0.98/L3.20-79.13in)
PCB increment	71.4mm increment/2000mm max (2.81in increment/78.74in max)
LED pitch	11.9mm - 84LED/m (0.47in - 26LED/ft)
Chip	s/e-line Toyoda Gosei k-line Toyoda Gosei or Equivalent
Beam angle	110° (Diffused Cover)
Colours	s/e-line 1900K/2100K/2300K/2500K/2700K/3000K/3500K/4000K/5000K k-line 1900K/2100K/2300K/2500K/2700K/3000K/3500K/4000K/5000K
Bin/Step	s-line 2-step MacAdam ellipse e/k-line 3-step MacAdam ellipse
CRI	≥ 90
Lifetime	50,000 hours @ 25°C (50,000 hours @ 77°F)
Operating temp	T _a = -20 to 40°C (T _c max = 62.6°C) T _a = -13 to 113°F (T _c max = 149°F)
IP rating	IP67
Finish	Silver anodised
Cover/lens	Diffused
Mounting	Ground recessed
Power feed	Sheathed hardwire tails or male/female connectors
Control	0-10V/1-10V/DMX/DALI
IK Rating	IEC 62262:2010/IK08



LED Grading Key

Exclusive Grade

s s-line*	*KKDC tuned CCT range
e e-line*	

Base Grade

k k-line	3-step commercial range Energy Star CCTs
-----------------	---

PERFORMANCE DATA @ 3000K

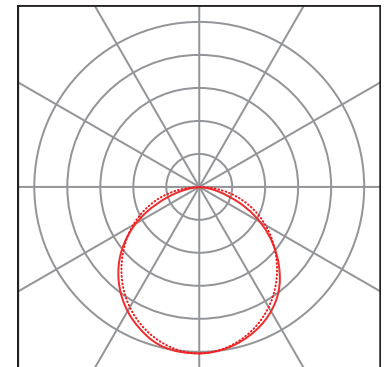
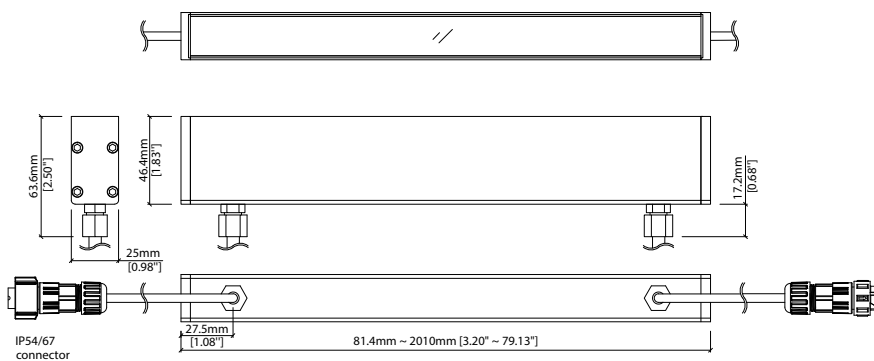
Power consumption	Supply voltage	Supply current
30.2W/m (9.2W/ft)	24V DC	1.26A/m (0.38A/ft)

Colour Rendering Index (CRI)

	R1	R2	R3	R4	R5	R6	R7	R8	R9	R10	R11	R12	R13	R14
k-line	94	97	98	93	93	96	92	83	60	93	94	82	95	99

Diffused Cover

	lm/m (lm/ft)	lm/W	CRI	R9	Rf	Rg
s/e-line	810lm/m (248lm/ft)	26.9lm/W	90	50	-	-
k-line	720lm/m (220lm/ft)	23.9lm/W	92	60	-	-



— C0 / C180 cd / 1000 lm C90 / C270

Data derived from production samples tested to UKAS/IESNA LM-79-08 standards.

Linear

MoMo-F 512

Code Table

KKDC

FIXTURE

Model	Finish	Cover	Grade ¹	LED	Colour (CCT)	Length Availability ²	IP	Cable Length	Power Feed ³	Input
MoMo-F MF	Silver Anodised SA	Diffused C	s s e e k k	512	1900K 19 2100K 21 2300K 23 2500K 25 2700K 27 3000K 30 3500K 35 4000K 40 5000K 50	m 81.4-2010mm 71.4mm increments i 3.20-79.13in 2.81in increments (Specify length code OR total run length)	IP67 67	300mm/11.81" 0300	Single ø6.3mm sheath tail S00B Double ø6.3mm sheath tail D00B Single ø6.3mm sheath IP67 connector S67B Double ø6.3mm sheath IP67 connector D67B	DC 24V g

¹ Refer to **LED Grading Key** on **Specification sheet** page

² Refer to **Length Availability List** or enter total run length instead of length code

³ Refer to **Power Feed Options** on **Options** pages

Code Example:

MF	-	SA	-	C	-	s	-	512	-	35	-	m	510	-	67	-	0300	-	D67B	-	g
MoMo-F		Silver Anodised		Diffused		s		512		3500K		m	509.8mm		IP67		300mm/11.81"		Double ø6.3mm sheath IP67 connector		DC 24V

ACCESSORIES

Mounting Accessories

KKFR-03 Ground box

* Refer to **Mounting accessories** on **Accessories** pages

Connection Accessories

CN67-2P-0300 IP67 2 PIN male & female 300mm/11.81" pair

CN67-2P-1000 IP67 2 PIN male & female 1000mm/39.37" pair

CN67-2P-3000 IP67 2 PIN male & female 3000mm/118.11" pair

* Refer to **Power feed** on **Accessories** pages

Exterior Junction Boxes

KKJB-07 IP67 Slim J-Box

KKJB-07R Potting Resin for IP67 Slim J-Box

* Refer to **Exterior Junction Boxes** on **Accessories** pages

PSU/Driver

0-10V/1-10V/DALI/DMX

* Refer to **Driver/PSU Options** page for details or provide requirement and KKDC to offer the suitable option

LED ENGINE VARIANTS (LED STRIP TYPE)

Colour	Output	LED	Lumen/m	Lumen/ft	W/m	W/ft	Spec Doc	Length	Increment
Single CCT	Low	352	140	43	5.5	1.67	MoMo-F 352	93.3-2010mm (3.67-79.13in)	83.3mm (3.28in)
	Low	504	340	104	12.5	3.81	MoMo-F 504	110-2010mm (4.33-79.13in)	100mm (3.94in)
	Low	508	470	143	17.5	5.33	MoMo-F 508	81.4-2010mm (3.20-79.13in)	71.4mm (2.81in)
	Mid	512	810	247	30.2	9.2	MoMo-F 512	81.4-2010mm (3.20-79.13in)	71.4mm (2.81in)
RGB	High	040	1640	500	40	12.19	MoMo-F A040	87-1510mm (3.43-59.45in)	38.46mm (1.51in)
		501	Red 41 Green 88 Blue 14 RGB 127	Red 12 Green 27 Blue 44 RGB 39	15.6	4.75	MoMo-F RGB	93.3-2010mm (3.67-79.13in)	83.3mm (3.28in)

* Performance data: A/s/e-line, diffused cover, 3000K

MoMo-F 512

Length Availability List

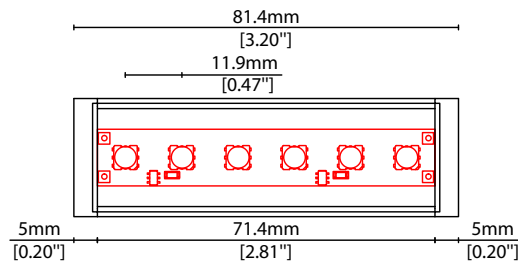


Length Code		Fixture Length ¹		LED Strip ²		End Cap Dimension ³		Wattage (W)	Output (lm)	
Metric	Imperial(US)	Metric	Imperial(US)	Metric	Imperial(US)	Metric	Imperial(US)		3000K (Test Data)	Range Data
m0091	i0003	81mm	3.21in	71mm	2.81in	10mm	0.39in	2.16	58	41-60
m0163	i0006	153mm	6.02in	143mm	5.62in	10mm	0.39in	4.32	116	83-121
m0234	i0009	224mm	8.83in	214mm	8.44in	10mm	0.39in	6.48	174	124-181
m0306	i0012	296mm	11.64in	286mm	11.25in	10mm	0.39in	8.64	232	165-242
m0377	i0014	367mm	14.45in	357mm	14.06in	10mm	0.39in	10.80	291	206-302
m0448	i0017	439mm	17.27in	429mm	16.87in	10mm	0.39in	12.96	349	248-363
m0520	i0020	510mm	20.08in	500mm	19.69in	10mm	0.39in	15.12	407	289-423
m0591	i0023	581mm	22.89in	571mm	22.50in	10mm	0.39in	17.28	465	330-483
m0663	i0026	653mm	25.70in	643mm	25.31in	10mm	0.39in	19.44	523	372-544
m0734	i0029	724mm	28.52in	714mm	28.12in	10mm	0.39in	21.60	581	413-604
m0806	i0031	796mm	31.33in	786mm	30.93in	10mm	0.39in	23.76	639	454-665
m0877	i0034	867mm	34.14in	857mm	33.75in	10mm	0.39in	25.92	697	496-725
m0948	i0037	939mm	36.95in	929mm	36.56in	10mm	0.39in	28.08	755	537-786
m1020	i0040	1010mm	39.76in	1000mm	39.37in	10mm	0.39in	30.24	813	578-846
m1091	i0043	1081mm	42.58in	1071mm	42.18in	10mm	0.39in	32.40	872	619-906
m1163	i0045	1153mm	45.39in	1143mm	45.00in	10mm	0.39in	34.56	930	661-967
m1234	i0048	1224mm	48.20in	1214mm	47.81in	10mm	0.39in	36.72	988	702-1027
m1306	i0051	1296mm	51.01in	1286mm	50.62in	10mm	0.39in	38.88	1046	743-1088
m1377	i0054	1367mm	53.83in	1357mm	53.43in	10mm	0.39in	41.04	1104	785-1148
m1448	i0057	1439mm	56.64in	1429mm	56.24in	10mm	0.39in	43.20	1162	826-1209
m1520	i0059	1510mm	59.45in	1500mm	59.06in	10mm	0.39in	45.36	1220	867-1269
m1591	i0062	1581mm	62.26in	1571mm	61.87in	10mm	0.39in	47.52	1278	909-1329
m1663	i0065	1653mm	65.07in	1643mm	64.68in	10mm	0.39in	49.68	1336	950-1390
m1734	i0068	1724mm	67.89in	1714mm	67.49in	10mm	0.39in	51.84	1394	991-1450
m1806	i0071	1796mm	70.70in	1786mm	70.31in	10mm	0.39in	54.00	1453	1032-1511
m1877	i0074	1867mm	73.51in	1857mm	73.12in	10mm	0.39in	56.16	1511	1074-1571
m1948	i0076	1939mm	76.32in	1929mm	75.93in	10mm	0.39in	58.32	1569	1115-1632
m2020	i0079	2010mm	79.14in	2000mm	78.74in	10mm	0.39in	60.48	1627	1156-1692

¹ Actual total overall length of light fixture (LED strip + end caps + void/wire hole)

² Actual length of PCB strip

³ Actual length of 2x end caps





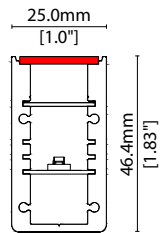
MoMo-F 512

Options



COVER/LENS OPTIONS

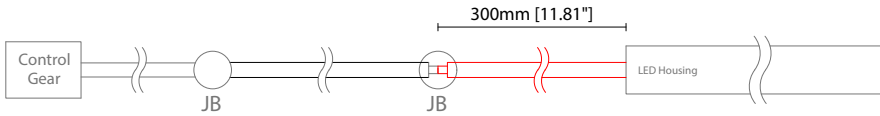
* Options are an integral part of the fixture ordering codes. Please refer to **Code Table** pages.



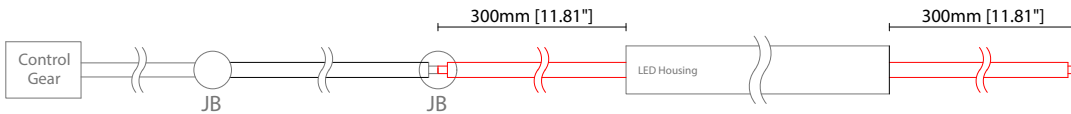
C Diffused Cover
W25.0/H46.4mm (W1.00/H1.83")

POWER FEED OPTIONS

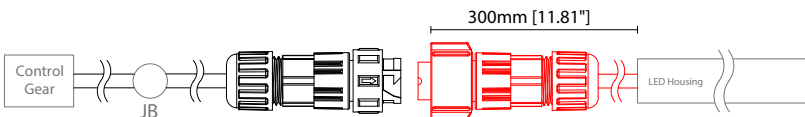
0300 S00B 300mm (11.81") Single Ø6.3mm sheath tail



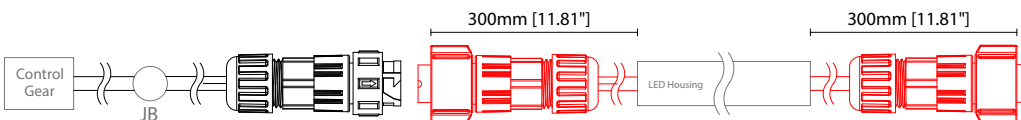
0300 D00B 300mm (11.81") Double Ø6.3mm sheath tail



0300 S67B 300mm (11.81") Single Ø6.3mm sheath IP67 connector

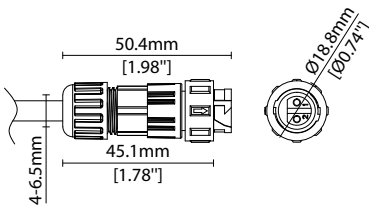


0300 D67B 300mm (11.81") Double Ø6.3mm sheath IP67 connector

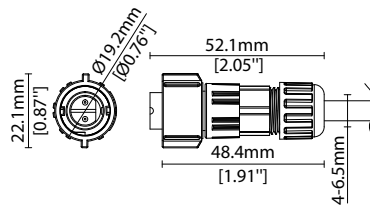


IP67 2 Pin Connector

Female connector
2 PIN (IP67)



Male connector
2 PIN (IP67)

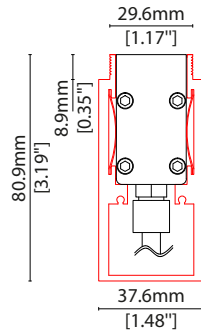


Key

- Control Gear Power supply, sub-controllers & control systems
- JB Junction box / cable connection

MOUNTING ACCESSORIES

Note: Accessories are to be ordered separately with corresponding code shown below.



KKFR-03*

Ground box

Anodised aluminium finish

W37.6/H80.9mm (W1.48/H3.19")

* Specify length to match MoMo-F

POWER FEED



CN67-2P-0300 300mm (11.81in) pair

CN67-2P-1000 1000mm (39.37in) pair

CN67-2P-3000 3000mm (118.11in) pair

IP67

2 PIN male + female connector set

EXTERIOR JUNCTION BOXES



KKJB-07

IP67 Slim J-Box
(including type A,B,C, D bushings)



KKJB-07R

Potting resin for IP67 Slim J-Box

KKDC CONTROL



IP20
Plastic housing
L170/W59/H29mm
(L6.69/W2.32/H1.14in)

KKDM-06 1-10V

visDIM dimmable sub-controller
(4 x 8A max @ 12-36V)



IP20
Plastic housing
L170/W53.4/H28mm
(L6.69/W2.10/H1.10in)

KKSC-05 DMX

visDIM dimmable sub-controller
(4 x 5A max @ 12-36V)



IP20
Plastic housing
L170/W59/H29mm
(L6.69/W2.32/H1.14in)

KKDL-02 DALI

visDIM dimmable sub-controller
(4 x 8A max @ 12-36V)



IP20
Plastic housing
L166/W53.4/H23mm
(L6.54/W2.10/H0.91in)

KKDL-03 DALI

visDIM dimmable sub-controller
(4 x 5A max @ 12-36V)

AVAILABLE PSU OPTIONS

Control Mode	PSU (Order Code)	Input Voltage AC	Output Voltage DC	Rated Output Current	Rated Power	Dim %	IP Rating
Switched	CEN-60-24	90-295V	24V	2.5A	60W	-	IP67
	HLG-60H-24	90-305V	24V	2.5A	60W	-	IP67
	HLG-100H-24	90-305V	24V	4.0A	100W	-	IP67
	HLG-150H-24	90-305V	24V	6.3A	150W	-	IP67
	HLG-240H-24	90-305V	24V	10A	240W	-	IP67
0-10V (1-10V)	PWM-40-24	90-305V	24V	1.67A	40W	100-0.15 (100-10)	IP67
	PWM-60-24	90-305V	24V	2.5A	60W	100-0.15 (100-10)	IP67
	PWM-90-24	90-305V	24V	3.67A	90W	100-0.15 (100-10)	IP67
	PWM-120-24	90-305V	24V	5.0A	120W	100-0.15 (100-10)	IP67
DALI	LIN100A1	120-277V	24V	1A per channel	100W	100-0.1	IP66/IP40
DMX RGB	LIN100A1	120-277V	24V	1.33A per channel	100W	100-0.1	IP66/IP40
DMX RGBW	LIN100A1	120-277A	24V	1A per channel	100W	100-0.1	IP66/IP40

Flicker Free Options - Combination of PSU+ sub-controller

Control Mode	PSU (Order Code)	Sub-controller (Order Code)	Input Voltage AC	Output Voltage DC	Rated Output Current	Rated Power	Dim %	IP Rating PSU/ Sub-controller
0-10V or 1-10V	CEN-60-24	KKDM-06	90-295V	24V	2.5A	60W	100-0.9	IP67/IP20
	HLG-60H-24	KKDM-06	90-295V	24V	2.5A	60W	100-0.9	IP67/IP20
	HLG-100H-24	KKDM-06	90-295V	24V	4.0A	100W	100-0.9	IP67/IP20
	HLG-150H-24	KKDM-06	90-295V	24V	6.3A	150W	100-0.9	IP67/IP20
	HLG-240H-24	KKDM-06	90-295V	24V	10.0A	240W	100-0.9	IP67/IP20
DALI	CEN-60-24	KKDL-02/03	90-295V	24V	2.5A	60W	100-0.1	IP67/IP20
	HLG-60H-24	KKDL-02/03	90-305V	24V	2.5A	60W	100-0.1	IP67/IP20
	HLG-100H-24	KKDL-02/03	90-305V	24V	4.0A	100W	100-0.1	IP67/IP20
	HLG-150H-24	KKDL-02/03	90-305V	24V	6.3A	150W	100-0.1	IP67/IP20
	HLG-240H-24	KKDL-02/03	90-305V	24V	10.0A	240W	100-0.1	IP67/IP20
DMX RGB	CEN-60-24	KKSC-05	90-295V	24V	2.5A	60W	100-0.9	IP67/IP20
	HLG-60H-24	KKSC-05	90-305V	24V	2.5A	60W	100-0.9	IP67/IP20
	HLG-100H-24	KKSC-05	90-305V	24V	4A	100W	100-0.9	IP67/IP20
	HLG-150H-24	KKSC-05	90-305V	24V	6.3A	150W	100-0.9	IP67/IP20
	HLG-240H-24	KKSC-05	90-305V	24V	10.0A	240W	100-0.9	IP67/IP20

¹ The items shown above cover the most frequently used specification but does not exhaust the possible options

² PSU and/or driver can be chosen from the table, or KKDC may recommend the best option upon receipt of the controls requirement and installation environment

³ Electrical shop drawing will include detailed information of PSU and relevant control drivers

⁴ Cut sheets are available on the controls section of www.kkdc.lighting or upon request