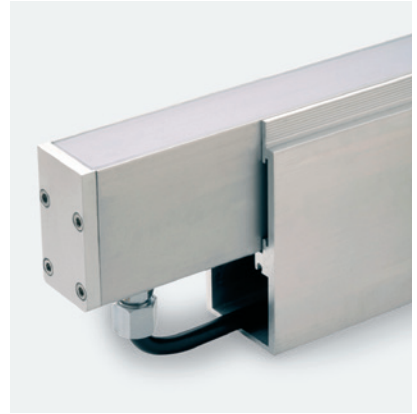


Linear

MoMo-F RGB Fixture Guide

KKDÖ

Indoor/Outdoor | Recessed | RGB output

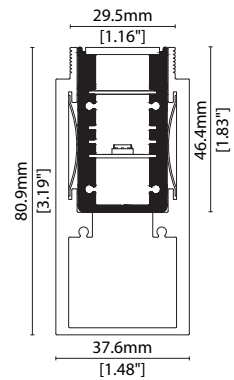


Key applications

- ✓ Bathrooms
- ✓ Interior/Exterior
- ✓ Orientation lighting
- ✓ Public spaces
- ✓ Uplighting
- ✓ Wall grazing

Key features

- ✓ Custom lengths
- ✓ Diffusion: Homogenous
- ✓ Direct view
- ✓ Form factor: Large
- ✓ In-ground walkover
- ✓ IP67
- ✓ RGB



MOUNTING METHODS



KKFR-03 Ground box

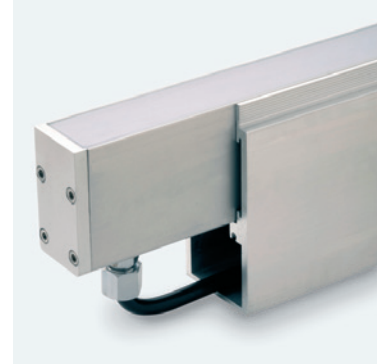
Linear

MoMo-F RGB

Specification sheet



Dimension	H46.4/W25/L93.3-2010mm (H1.83/W0.98/L3.67-79.13in)
PCB increment	83.3mm increment/2000mm max (3.28in increment/78.74in max)
LED pitch	13.9mm - 72LED/m (0.55in - 22LED/ft)
Chip	Red TEKCORE/Green EPILEDS/Blue 3E
Beam angle	110° (Diffused Cover)
Colours	Red 620-625nm/Blue 455-460nm/Green 520-525nm
Bin/Step	5nm tolerance
CRI	N/A
Lifetime	50,000 hours @ 25°C (50,000 hours @ 77°F)
Operating temp	T _a = -20 to 60°C (T _c max = 70°C) T _a = -4 to 140°F (T _c max = 158°F)
IP rating	IP67
Finish	Silver anodised
Cover/lens	Diffused
Mounting	Ground recessed
Power feed	Sheathed hardwire tails or male/female connectors
Control	DMX/DALI
IK Rating	IEC 62262:2010/IK08

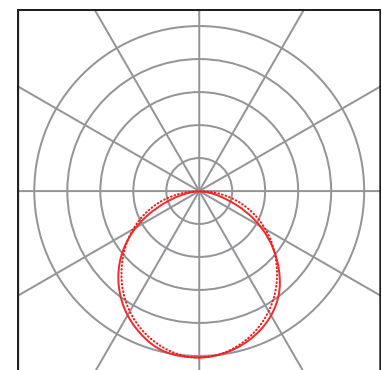
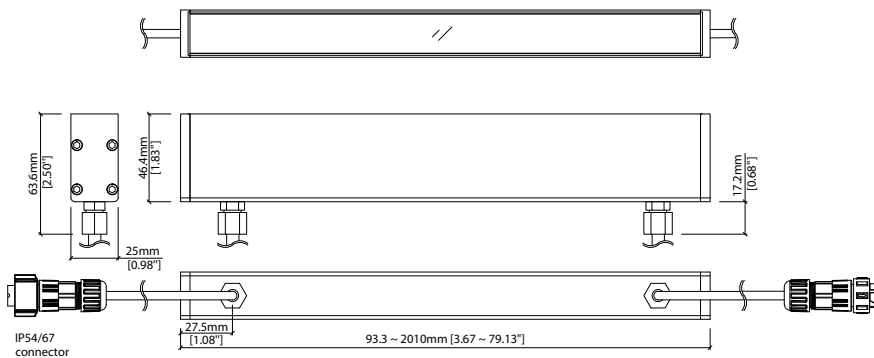


PERFORMANCE DATA

Power consumption	Supply voltage	Supply current
15.6W/m (4.75W/ft)	24V DC	0.65A/m (0.20A/ft)

Diffused Cover

Red: 41lm/m (12lm/ft)
 Green: 88lm/m (27lm/ft)
 Blue: 14lm/m (4lm/ft)
 RGB: 127lm/m (39lm/ft)



— C0 / C180 cd / 1000 lm - - - C90 / C270


Data derived from production samples tested to UKAS/IESNA LM-79-08 standards.

See KKDÖ website for product document updates.

www.kkdc.lighting


MoMoFRGBS-02.05EN-20221006

FIXTURE

Model	Finish	Cover	Grade	LED	Colour (CCT)	Length Availability ¹	IP	Cable Length	Power Feed ²	Input
MoMo-F MF	Silver Anodised SA	Diffused C	 s	501	RGB RGB	m 93.3-2010mm 83.3mm increments i 3.67-79.13in 3.28in increments (Specify length code OR total run length)	IP67 67	300mm/11.81" 0300	Single ø6.3mm sheath tail S00B Double ø6.3mm sheath tail D00B Single ø6.3mm sheath IP67 connector S67B Double ø6.3mm sheath IP67 connector D67B	DC 24V g

¹ Refer to **Length Availability List** or enter total run length instead of length code ² Refer to **Power Feed Options** on **Options** pages

Code Example:

MF	-	SA	-	C	-	s	-	501	-	RGB	-	m	510	-	67	-	0300	-	D00B	-	g
MoMo-F		Silver Anodised		Diffused				501		RGB		509.8mm		IP67		300mm/11.81"		Double ø6.3mm sheath tail		DC 24V	

ACCESSORIES

Mounting Accessories

KKFR-03 Ground box

* Refer to **Mounting accessories** on **Accessories** pages

Connection Accessories

CN67-4P-0300 4 PIN RGB male & female 300mm/11.81" pair

CN67-4P-1000 4 PIN RGB male & female 1000mm/39.37" pair

CN67-4P-3000 4 PIN RGB male & female 3000mm/118.11" pair

* Refer to **Power feed** on **Accessories** pages

Exterior Junction Boxes

KKJB-07 IP67 Slim J-Box

KKJB-07R Potting Resin for IP67 Slim J-Box

* Refer to **Exterior Junction Boxes** on **Accessories** pages

PSU/Driver

0-10V/1-10V/DALI/DMX

* Refer to **Driver/PSU Options** page for details or provide requirement and KKDC to offer the suitable option

LED ENGINE VARIANTS (LED STRIP TYPE)

Colour	Output	LED	Lumen/m	Lumen/ft	W/m	W/ft	Spec Doc	Length	Increment
Single CCT	Low	352	140	43	5.5	1.67	MoMo-F 352	93.3-2010mm (3.67-79.13in)	83.3mm (3.28in)
	Low	504	340	104	12.5	3.81	MoMo-F 504	110-2010mm (4.33-79.13in)	100mm (3.94in)
	Low	508	470	143	17.5	5.33	MoMo-F 508	81.4-2010mm (3.20-79.13in)	71.4mm (2.81in)
	Mid	512	810	247	30.2	9.2	MoMo-F 512	81.4-2010mm (3.20-79.13in)	71.4mm (2.81in)
	High	040	1640	500	40	12.19	MoMo-F A040	87-1510mm (3.43-59.45in)	38.46mm (1.51in)
RGB		501	Red 41 Green 88 Blue 14 RGB 127	Red 12 Green 27 Blue 44 RGB 39	15.6	4.75	MoMo-F RGB	93.3-2010mm (3.67-79.13in)	83.3mm (3.28in)

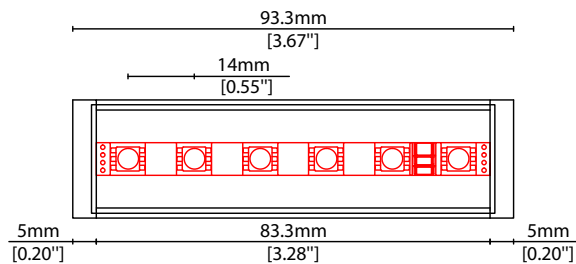
* Performance data: diffused cover, RGB

Length Code		Fixture Length ¹		LED Strip ²		End Cap Dimension ³		Wattage (W)	Output (lm)			
Metric	Imperial(US)	Metric	Imperial(US)	Metric	Imperial(US)	Metric	Imperial(US)		R	G	B	W
m0093	i0004	93mm	3.67in	83mm	3.28in	10mm	0.39in	1.30	3	8	1	12
m0177	i0007	177mm	6.96in	167mm	6.56in	10mm	0.39in	2.60	7	16	3	24
m0260	i0010	260mm	10.24in	250mm	9.84in	10mm	0.39in	3.90	10	25	4	35
m0343	i0014	343mm	13.52in	333mm	13.12in	10mm	0.39in	5.20	13	33	5	47
m0427	i0017	427mm	16.80in	417mm	16.41in	10mm	0.39in	6.50	16	41	7	59
m0510	i0020	510mm	20.08in	500mm	19.69in	10mm	0.39in	7.80	20	49	8	71
m0593	i0023	593mm	23.36in	583mm	22.97in	10mm	0.39in	9.10	23	57	9	82
m0677	i0027	677mm	26.64in	667mm	26.25in	10mm	0.39in	10.40	26	65	11	94
m0760	i0030	760mm	29.92in	750mm	29.53in	10mm	0.39in	11.70	29	74	12	106
m0843	i0033	843mm	33.20in	833mm	32.81in	10mm	0.39in	13.00	33	82	13	118
m0927	i0036	927mm	36.49in	917mm	36.09in	10mm	0.39in	14.30	36	90	15	129
m1010	i0040	1010mm	39.77in	1000mm	39.37in	10mm	0.39in	15.60	39	98	16	141
m1093	i0043	1093mm	43.05in	1083mm	42.65in	10mm	0.39in	16.90	42	106	17	153
m1177	i0046	1177mm	46.33in	1167mm	45.94in	10mm	0.39in	18.20	46	114	19	165
m1260	i0050	1260mm	49.61in	1250mm	49.22in	10mm	0.39in	19.50	49	123	20	176
m1343	i0053	1343mm	52.89in	1333mm	52.50in	10mm	0.39in	20.80	52	131	21	188
m1427	i0056	1427mm	56.17in	1417mm	55.78in	10mm	0.39in	22.10	55	139	23	200
m1510	i0059	1510mm	59.45in	1500mm	59.06in	10mm	0.39in	23.40	59	147	24	212
m1593	i0063	1593mm	62.73in	1583mm	62.34in	10mm	0.39in	24.70	62	155	25	223
m1677	i0066	1677mm	66.02in	1667mm	65.62in	10mm	0.39in	26.00	65	163	27	235
m1760	i0069	1760mm	69.30in	1750mm	68.90in	10mm	0.39in	27.30	68	172	28	247
m1843	i0073	1843mm	72.58in	1833mm	72.18in	10mm	0.39in	28.60	72	180	29	259
m1927	i0076	1927mm	75.86in	1917mm	75.47in	10mm	0.39in	29.90	75	188	31	270
m2010	i0079	2010mm	79.14in	2000mm	78.75in	10mm	0.39in	31.20	78	196	32	282

¹ Actual total overall length of light fixture (LED strip + end caps + void/wire hole)

² Actual length of PCB strip

³ Actual length of 2x end caps



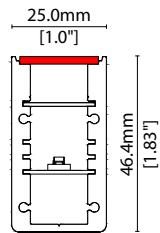


MoMo-F RGB Options



COVER/LENS OPTIONS

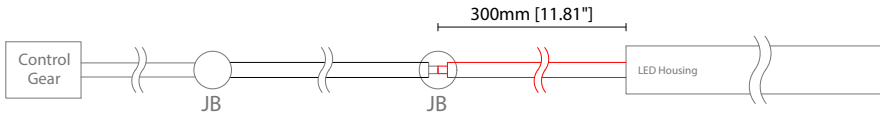
* Options are an integral part of the fixture ordering codes. Please refer to **Code Table** pages.



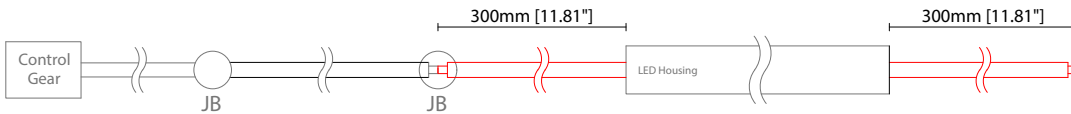
C Diffused Cover
W25.0/H46.4mm (W1.00/H1.83")

POWER FEED OPTIONS

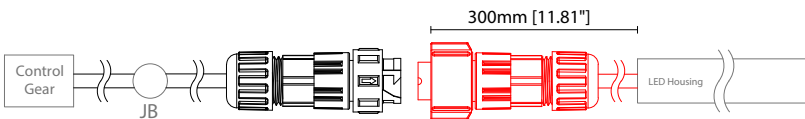
0300 S00B 300mm (11.81") Single Ø6.3mm sheath tail



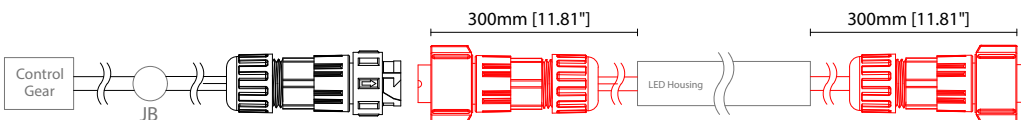
0300 D00B 300mm (11.81") Double Ø6.3mm sheath tail



0300 S67B 300mm (11.81") Single Ø6.3mm sheath IP67 connector

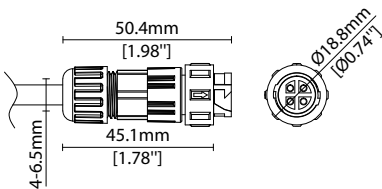


0300 D67B 300mm (11.81") Double Ø6.3mm sheath IP67 connector

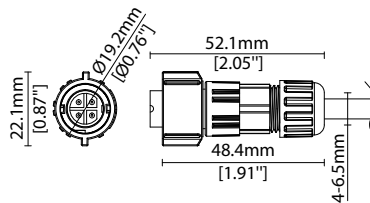


IP67 4 Pin Connector

Female connector
4 PIN (IP67)



Male connector
4 PIN (IP67)

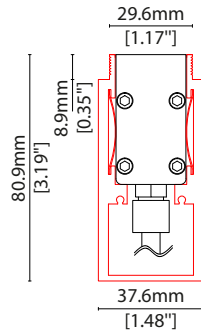


Key

Control Gear Power supply, sub-controllers & control systems
JB Junction box / cable connection

MOUNTING ACCESSORIES

Note: Accessories are to be ordered separately with corresponding code shown below.



KKFR-03*

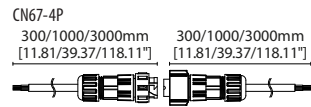
Ground box

Anodised aluminium finish

W37.6/H80.9mm (W1.48/H3.19")

* Specify length to match MoMo-F

POWER FEED



CN67-4P-0300 300mm (11.81in) pair

CN67-4P-1000 1000mm (39.37in) pair

CN67-4P-3000 3000mm (118.11in) pair

IP67

4 PIN male + female (RGB/LEDmix) connector set

EXTERIOR JUNCTION BOXES



KKJB-07

IP67 Slim J-Box
(including type A,B,C, D bushings)



KKJB-07R

Potting resin for IP67 Slim J-Box

KKDC CONTROL



IP20
Plastic housing
L170/W59/H29mm
(L6.69/W2.32/H1.14in)

KKDM-06 1-10V

visDIM dimmable sub-controller
(4 x 8A max @ 12-36V)



IP20
Plastic housing
L170/W53.4/H28mm
(L6.69/W2.10/H1.10in)

KKSC-05 DMX

visDIM dimmable sub-controller
(4 x 5A max @ 12-36V)



IP20
Plastic housing
L170/W59/H29mm
(L6.69/W2.32/H1.14in)

KKDL-02 DALI

visDIM dimmable sub-controller
(4 x 8A max @ 12-36V)



IP20
Plastic housing
L166/W53.4/H23mm
(L6.54/W2.10/H0.91in)

KKDL-03 DALI

visDIM dimmable sub-controller
(4 x 5A max @ 12-36V)

AVAILABLE PSU OPTIONS

Control Mode	PSU (Order Code)	Input Voltage AC	Output Voltage DC	Rated Output Current	Rated Power	Dim %	IP Rating
Switched	CEN-60-24	90-295V	24V	2.5A	60W	-	IP67
	HLG-60H-24	90-305V	24V	2.5A	60W	-	IP67
	HLG-100H-24	90-305V	24V	4.0A	100W	-	IP67
	HLG-150H-24	90-305V	24V	6.3A	150W	-	IP67
	HLG-240H-24	90-305V	24V	10A	240W	-	IP67
0-10V (1-10V)	PWM-40-24	90-305V	24V	1.67A	40W	100-0.15 (100-10)	IP67
	PWM-60-24	90-305V	24V	2.5A	60W	100-0.15 (100-10)	IP67
	PWM-90-24	90-305V	24V	3.67A	90W	100-0.15 (100-10)	IP67
	PWM-120-24	90-305V	24V	5.0A	120W	100-0.15 (100-10)	IP67
DALI	LIN100A1	120-277V	24V	1A per channel	100W	100-0.1	IP66/IP40
DMX RGB	LIN100A1	120-277V	24V	1.33A per channel	100W	100-0.1	IP66/IP40
DMX RGBW	LIN100A1	120-277A	24V	1A per channel	100W	100-0.1	IP66/IP40

Flicker Free Options - Combination of PSU+ sub-controller

Control Mode	PSU (Order Code)	Sub-controller (Order Code)	Input Voltage AC	Output Voltage DC	Rated Output Current	Rated Power	Dim %	IP Rating PSU/ Sub-controller
0-10V or 1-10V	CEN-60-24	KKDM-06	90-295V	24V	2.5A	60W	100-0.9	IP67/IP20
	HLG-60H-24	KKDM-06	90-295V	24V	2.5A	60W	100-0.9	IP67/IP20
	HLG-100H-24	KKDM-06	90-295V	24V	4.0A	100W	100-0.9	IP67/IP20
	HLG-150H-24	KKDM-06	90-295V	24V	6.3A	150W	100-0.9	IP67/IP20
	HLG-240H-24	KKDM-06	90-295V	24V	10.0A	240W	100-0.9	IP67/IP20
DALI	CEN-60-24	KKDL-02/03	90-295V	24V	2.5A	60W	100-0.1	IP67/IP20
	HLG-60H-24	KKDL-02/03	90-305V	24V	2.5A	60W	100-0.1	IP67/IP20
	HLG-100H-24	KKDL-02/03	90-305V	24V	4.0A	100W	100-0.1	IP67/IP20
	HLG-150H-24	KKDL-02/03	90-305V	24V	6.3A	150W	100-0.1	IP67/IP20
	HLG-240H-24	KKDL-02/03	90-305V	24V	10.0A	240W	100-0.1	IP67/IP20
DMX RGB	CEN-60-24	KKSC-05	90-295V	24V	2.5A	60W	100-0.9	IP67/IP20
	HLG-60H-24	KKSC-05	90-305V	24V	2.5A	60W	100-0.9	IP67/IP20
	HLG-100H-24	KKSC-05	90-305V	24V	4A	100W	100-0.9	IP67/IP20
	HLG-150H-24	KKSC-05	90-305V	24V	6.3A	150W	100-0.9	IP67/IP20
	HLG-240H-24	KKSC-05	90-305V	24V	10.0A	240W	100-0.9	IP67/IP20

¹ The items shown above cover the most frequently used specification but does not exhaust the possible options

² PSU and/or driver can be chosen from the table, or KKDC may recommend the best option upon receipt of the controls requirement and installation environment

³ Electrical shop drawing will include detailed information of PSU and relevant control drivers

⁴ Cut sheets are available on the controls section of www.kkdc.lighting or upon request