

Linear

MoMo-R 207 Fixture Guide

KKDÖ

Indoor/Outdoor | Recessed | Mid dynamic output up to 720lm/m (219lm/ft)

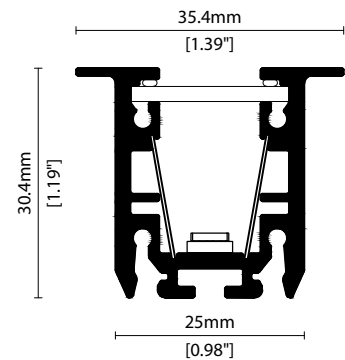


Key applications

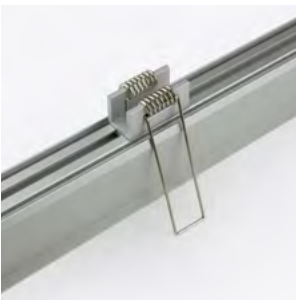
- ✓ Bathrooms
- ✓ Ceiling
- ✓ Downlighting
- ✓ Interior/Exterior
- ✓ Special effect
- ✓ Wall grazing

Key features

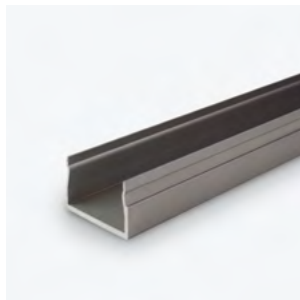
- ✓ Custom lengths
- ✓ Diffusion: Homogenous
- ✓ Direct view
- ✓ Dynamic white
- ✓ Extensive CCT range
- ✓ Form factor: Medium
- ✓ IP54
- ✓ IP67
- ✓ Output mid



MOUNTING METHODS



KKSB-01 Spring bracket



KKCR-01-1000 Cable raceway (1000mm)
KKCR-01-2000 Cable raceway (2000mm)
KKCR-01-3000 Cable raceway (3000mm)

Warm dim (Dynamic white)

Output Luminance %

min DIM1 Input Level max

— CH1 (Warmer)
— CH2 (Cooler)

LEDmix 207

CCT Selection 1 CCT Selection 2

LEDmix 209

CCT Selection 1 CCT Selection 2

LEDmix **warm dim** (Dynamic white) is a pre-programmed dimming curve setting enabling two different colour temperatures (CCTs) to blend harmoniously to achieve a warming lighting effect when dimmed.

KKDC LEDmix strips allow two separate CCT selections to be specified within the same PCB strip.

Use the table opposite to help determine which 2 CCT selections you require according to your preferred cool to warm dimming range.

**Note: The blended CCT is approx. 'cool-end' result at 100% brightness based on using the KKDC LED CCT specification.*

CCT Selection 1	CCT Selection 2	
	Blended CCT*	PCB CCT
1900K~	2000K 2100K 2200K 2300K 2500K 2600K 2700K 3000K 3500K	2100K PCB 2300K PCB 2500K PCB 2700K PCB 3000K PCB 3200K PCB 3500K PCB 4000K PCB 5000K PCB
2100K~	2200K 2300K 2400K 2600K 2700K 2800K 3000K 3600K	2300K PCB 2500K PCB 2700K PCB 3000K PCB 3200K PCB 3500K PCB 4000K PCB 5000K PCB
2300K~	2400K 2500K 2700K 2800K 2900K 3100K 3700K	2500K PCB 2700K PCB 3000K PCB 3200K PCB 3500K PCB 4000K PCB 5000K PCB
2500K~	2600K 2800K 2800K 3000K 3200K 3800K	2700K PCB 3000K PCB 3200K PCB 3500K PCB 4000K PCB 5000K PCB
2700K~	2900K 3000K 3100K 3400K 3900K	3000K PCB 3200K PCB 3500K PCB 4000K PCB 5000K PCB
3000K~	3100K 3300K 3500K 4000K	3200K PCB 3500K PCB 4000K PCB 5000K PCB
3200K~	3300K 3600K 4100K	3500K PCB 4000K PCB 5000K PCB
3500K~	3700K 4300K	4000K PCB 5000K PCB
4000K~	5100K	5000K PCB

Tuneable white

Channel Mix Ratio %

min DIM1 Input Level max

— CH1 (Warmer)
— CH2 (Cooler)

LEDmix 207

CCT Selection 1 CCT Selection 2

LEDmix 209

CCT Selection 1 CCT Selection 2

LEDmix **tunable white** enables two different LED colour temperatures (CCTs) to be specified within the same LEDmix strip.

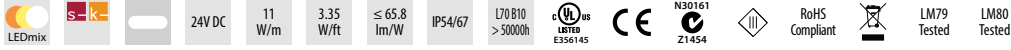
Each CCT selection can then be independently controlled (via your dimming control system) to adjust the warm & cool light output (CCT selections) and thus tailor a blended light colour of your choosing.

CCT Selection 1	CCT Selection 2
1900K~	2100K 2300K 2500K 2700K 3000K 3200K 3500K 4000K 5000K
2100K~	2300K 2500K 2700K 3000K 3200K 3500K 4000K 5000K
2300K~	2500K 2700K 3000K 3200K 3500K 4000K 5000K
2500K~	2700K 3000K 3200K 3500K 4000K 5000K
2700K~	3000K 3200K 3500K 4000K 5000K
3000K~	3200K 3500K 4000K 5000K
3200K~	3500K 4000K 5000K
3500K~	4000K 5000K
4000K~	5000K

Linear

MoMo-R 207

Specification sheet



Dimension	H30.35/W35.4/L108.3-2025mm* (H1.19/W1.39/L4.26-79.72in*) *Nano Louvre = 1025mm/40.35in Max
PCB increment	83.3mm increment/2000mm* (3.28in increment/78.74in*) *Nano Louvre = 1000mm/39.37in Max
LED pitch	13.9mm - 144 LED/m (0.55in - 44LED/ft) between same coloured LEDs
Chip	s-line Toyoda Gosei k-line Toyoda Gosei or Equivalent
Beam angle	100° (Clear Cover)/14° (KKLN-01 Lens)/95° (Diffused Cover)/35° (Nano Louvre)
Colours	s-line 1900K/2100K/2300K/2500K/2700K/3000K/3500K/4000K/5000K k-line 1900K/2100K/2300K/2500K/2700K/3000K/3500K/4000K/5000K
Bin/Step	s-line 2.5-step MacAdam ellipse k-line 3-step MacAdam ellipse
CRI	≥ 90
Lifetime	50,000 hours @ 25°C (50,000 hours @ 77°F)
Operating temp	T _a = -25 to 60°C (T _C max = 66.7°C) T _a = -13 to 140°F (T _C max = 152.1°F)
IP rating	IP54/IP67
Finish	Silver anodised
Cover/lens	Clear/Clear + 14° lens option/Diffused/ Diffused + Micro Louvre/Diffused + Nano Louvre
Mounting	Recessed mounting via spring clip / Cable race way
Power feed	Sheathed hardwire tails or male/female connectors
Control	0-10V/1-10V/DMX/DALI



LED Grading Key

Exclusive Grade

s s-line*	*KKDC tuned CCT range
2.5-step CCT range	

Base Grade

k k-line	3-step commercial range Energy Star CCTs
------------------------	---

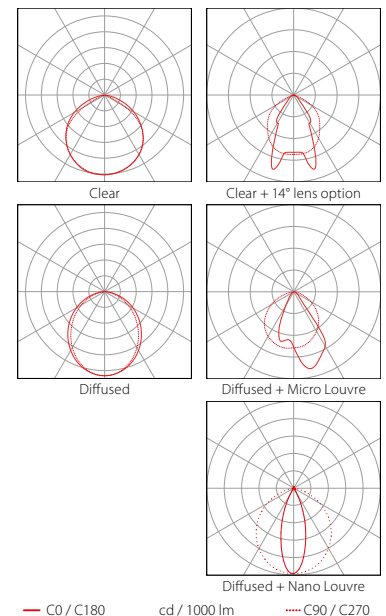
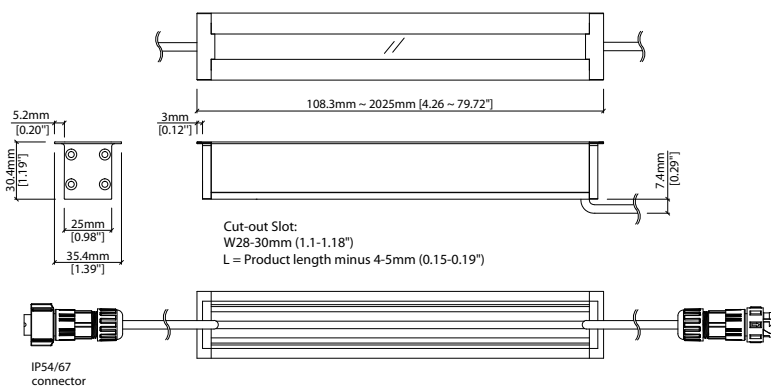
PERFORMANCE DATA @ 2100K + 5000K

Power Consumption	Supply voltage	Supply current
11W/m (3.35W/ft)	24V DC	0.46A/m (0.14A/ft)

Colour Rendering Index (CRI)

	R1	R2	R3	R4	R5	R6	R7	R8	R9	R10	R11	R12	R13	R14
k-line	94	97	98	93	93	96	92	83	60	93	94	82	95	99

	Clear	Clear + 14° (KKLN-01)	Diffused	Diffused + Micro Louvre	Diffused + Nano Louvre	CRI	R9	Rf	Rg
s-line	720lm/m (219lm/ft) 65.8lm/W	320lm/m (98lm/ft) 29.2lm/W	470lm/m (143lm/ft) 42.5lm/W	288lm/m (88lm/ft) 26.3lm/W	118lm/m (36lm/ft) 10.8lm/W	93	62	-	-
k-line	710lm/m (216lm/ft) 64.8lm/W	320lm/m (94lm/ft) 28.7lm/W	460lm/m (140lm/ft) 41.9lm/W	284lm/m (86lm/ft) 25.9lm/W	116lm/m (35lm/ft) 10.5lm/W	92	60	-	-



Data derived from production samples tested to UKAS/IESNA LM-79-08 standards.

FIXTURE

Model	Finish	Cover/Lens ¹	Grade ²	LED	Colour (CCT)	Length Availability ³	IP	Cable Length	Power Feed ⁴	Input		
MoMo-R	OR Silver Anodised	Clear	B	s	207	1900K 19	m 108.3-2025mm 83.3mm increments	IP54 54 IP67 ⁸ 67	300mm/11.81" 0300	Single ø4.3mm sheath tail	S00A	DC 24V g
			P	k	2100K 21							
		Clear + KKLN-01	C		2300K 23	i 4.26-79.72in 3.28in increments	(Specify length code OR total run length)	Double ø4.3mm sheath tail	D00A			
			W		2500K 25							
			CN		2700K 27							
		Diffused + Micro Louvre ⁵			3000K 30			Single ø4.3mm sheath IP67 connector ⁹	S67A			
					3500K 35					Double ø4.3mm sheath IP67 connector ⁹	D67A	
Diffused + Nano Louvre ⁶			4000K 40									
			5000K 50									

- ¹ Refer to **Cover/Lens Options** on **Options** pages ² Refer to **LED Grading Key** on **Specification sheet** page ³ Refer to **Length Availability List** or enter total run length instead of length code
- ⁴ Refer to **Power Feed Options** on **Options** pages ⁵ Not available for IP67 ⁶ Max length available with Nano Louvre is 1025mm
- ⁷ LEDmix requires two colour temperature choices ⁸ Due to the clear, flush potted polyurethane top layer on IP67 MoMo-R a colour shift of +/- 20K should be expected
- ⁹ IP67 connectors are used for both IP67 and IP54 product housings

Code Example:

OR	-	SA	-	C	-	s	-	207	-	2150	-	m	525	-	67	-	0300	-	D67A	-	g
MoMo-R		Silver Anodised		Diffused				207		2100K+5000K		524.8mm		IP67		300mm/11.81"		Double ø4.3mm sheath IP67 connector		DC 24V	

ACCESSORIES

Mounting Accessories

KKSB-01	Spring bracket
KKCR-01-1000	1000mm/39.37" Cable Raceway
KKCR-01-2000	2000mm/78.74" Cable Raceway
KKCR-01-3000	3000mm/118.11" Cable Raceway

* Refer to **Mounting accessories** on **Accessories** pages

Connection Accessories

CN67-4P-0300	IP67 4 PIN LEDmix male & female 300mm/11.81" pair
CN67-4P-1000	IP67 4 PIN LEDmix male & female 1000mm/39.37" pair
CN67-4P-3000	IP67 4 PIN LEDmix male & female 3000mm/118.11" pair

* Refer to **Power feed** on **Accessories** pages

Exterior Junction Boxes

KKJB-07	IP67 Slim J-Box
KKJB-07R	Potting Resin for IP67 Slim J-Box

* Refer to **Exterior Junction Boxes** on **Accessories** pages

PSU/Driver

0-10V/1-10V/DALI/DMX

* Refer to **Driver/PSU Options** page for details or provide requirement and KKDC to offer the suitable option

LED ENGINE VARIANTS (LED STRIP TYPE)

Colour	Output	LED	Lumen/m	Lumen/ft	W/m	W/ft	Spec Doc	Length	Increment
Single CCT	Low	352	410	125	5.5	1.67	MoMo-R 352	108.3-2025mm (4.26-79.72in)	83.3mm (3.28in)
	Mid	504	990	302	12.5	3.81	MoMo-R 504	125-2025mm (4.92-79.72in)	100mm (3.94in)
	High	508	1370	418	17.5	5.33	MoMo-R 508	96.4-2025mm (3.80-79.72in)	71.4mm (2.81in)
	Max	512	2370	721	30.2	9.2	MoMo-R 512	96.4-2025mm (3.80-79.72in)	71.4mm (2.81in)
	Max	040	3960	1207	40	12.19	MoMo-R A040	102-1525mm (4.01-60.03in)	38.46mm (1.51in)
Warm Dim/Dynamic White	Mid	207	720	219	11	3.35	MoMo-R 207	108.3-2025mm (4.26-79.72in)	83.3mm (3.28in)
RGB	Mid	208	1210	367	15.6	4.75	MoMo-R 208	191.7-2025mm (7.55-79.72in)	166.7mm (6.56in)
		501	Red 124 Green 252 Blue 41 RGB 398	Red 38 Green 77 Blue 7 RGB 62	15.6	4.75	MoMo-R RGB	108.3-2025mm (4.26-79.72in)	83.3mm (3.28in)

* Performance data: s-line, clear cover, 2100K+5000K

MoMo-R 207

Length Availability List

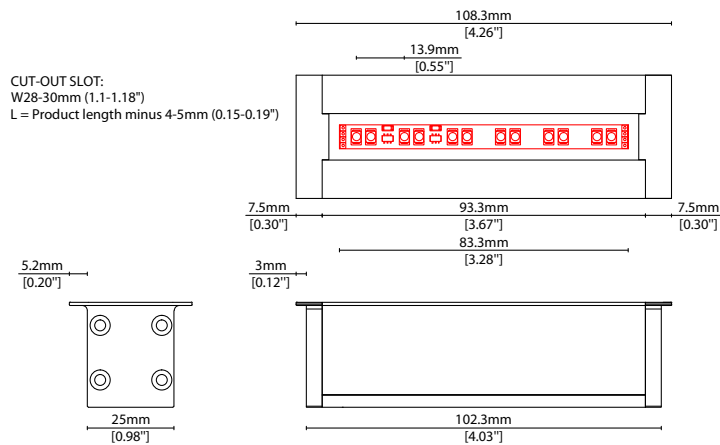


Length Code		Fixture Length ¹		LED Strip ²		End Cap Dimension ³		Wattage (W)	Output (lm)
Metric	Imperial(US)	Metric	Imperial(US)	Metric	Imperial(US)	Metric	Imperial(US)		MIX (Test Data)
m0108	i0004	108mm	4.07in	83mm	3.28in	15mm	0.39in	0.92	60
m0192	i0007	192mm	7.35in	167mm	6.56in	15mm	0.39in	1.83	121
m0275	i0011	275mm	10.63in	250mm	9.84in	15mm	0.39in	2.75	181
m0358	i0014	358mm	13.91in	333mm	13.12in	15mm	0.39in	3.67	241
m0442	i0017	442mm	17.19in	417mm	16.41in	15mm	0.39in	4.58	302
m0525	i0020	525mm	20.47in	500mm	19.69in	15mm	0.39in	5.50	362
m0608	i0024	608mm	23.76in	583mm	22.97in	15mm	0.39in	6.42	422
m0692	i0027	692mm	27.04in	667mm	26.25in	15mm	0.39in	7.33	483
m0775	i0030	775mm	30.32in	750mm	29.53in	15mm	0.39in	8.25	543
m0858	i0034	858mm	33.60in	833mm	32.81in	15mm	0.39in	9.17	603
m0942	i0037	942mm	36.88in	917mm	36.09in	15mm	0.39in	10.08	663
m1025	i0040	1025mm	40.16in	1000mm	39.37in	15mm	0.39in	11.00	724
m1108	i0043	1108mm	43.44in	1083mm	42.65in	15mm	0.39in	11.92	784
m1192	i0047	1192mm	46.72in	1167mm	45.94in	15mm	0.39in	12.83	844
m1275	i0050	1275mm	50.00in	1250mm	49.22in	15mm	0.39in	13.75	905
m1358	i0053	1358mm	53.29in	1333mm	52.50in	15mm	0.39in	14.67	965
m1442	i0057	1442mm	56.57in	1417mm	55.78in	15mm	0.39in	15.58	1025
m1525	i0060	1525mm	59.85in	1500mm	59.06in	15mm	0.39in	16.50	1086
m1608	i0063	1608mm	63.13in	1583mm	62.34in	15mm	0.39in	17.42	1146
m1692	i0066	1692mm	66.41in	1667mm	65.62in	15mm	0.39in	18.33	1206
m1775	i0070	1775mm	69.69in	1750mm	68.90in	15mm	0.39in	19.25	1267
m1858	i0073	1858mm	72.97in	1833mm	72.18in	15mm	0.39in	20.17	1327
m1942	i0076	1942mm	76.25in	1917mm	75.47in	15mm	0.39in	21.08	1387
m2025	i0080	2025mm	79.53in	2000mm	78.75in	15mm	0.39in	22.00	1448

¹ Actual total overall length of light fixture (LED strip + end caps + void/wire hole)

² Actual length of PCB strip

³ Actual length of 2x end caps

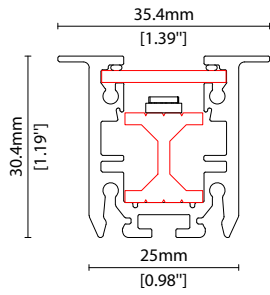


COVER/LENS OPTIONS

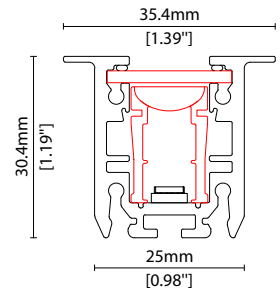
* Options are an integral part of the fixture ordering codes. Please refer to **Code Table** pages.



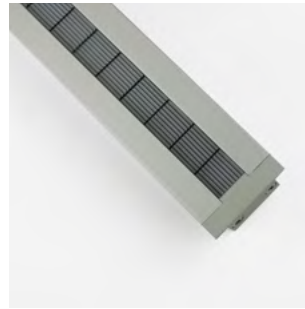
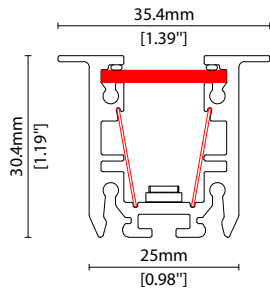
B Clear Cover



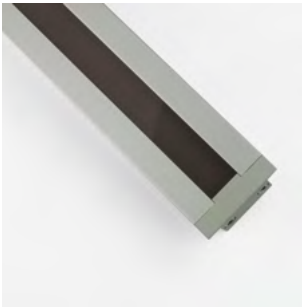
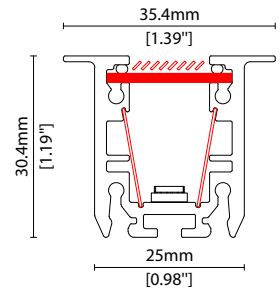
P Clear Cover + KKLN-01



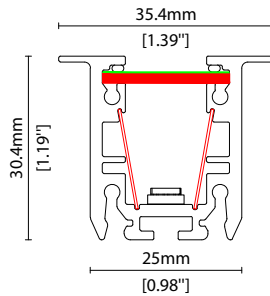
C Diffused Cover



W Diffused Cover + Micro Louvre



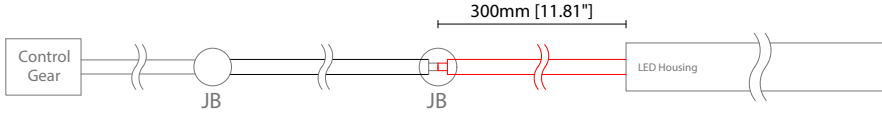
CN Diffused Cover + Nano Louvre



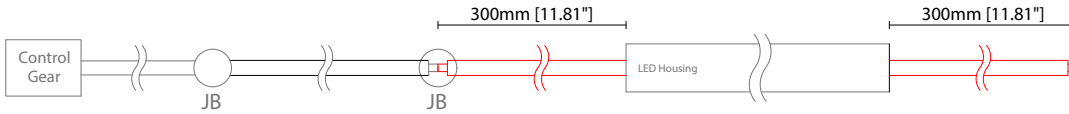
POWER FEED OPTIONS

* Options are an integral part of the fixture ordering codes. Please refer to **Code Table** pages.

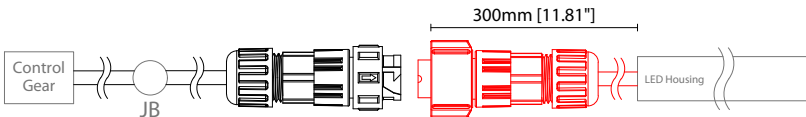
0300 S00A 300mm (11.81") Single Ø4.3mm sheath tail



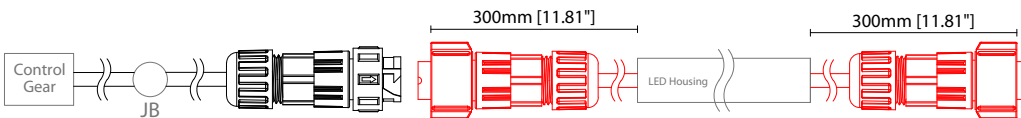
0300 D00A 300mm (11.81") Double Ø4.3mm sheath tail



0300 S67A 300mm (11.81") Single ø4.3mm sheath IP67 connector

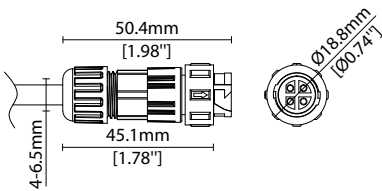


0300 D67A 300mm (11.81") Double ø4.3mm sheath IP67 connector

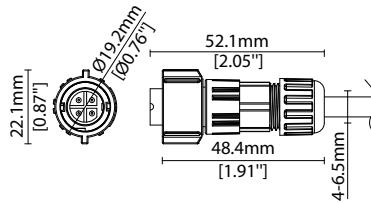


IP67 4 Pin Connector

Female connector
4 PIN (IP67)



Male connector
4 PIN (IP67)



Key

Control Gear Power supply, sub-controllers & control systems
JB Junction box / cable connection

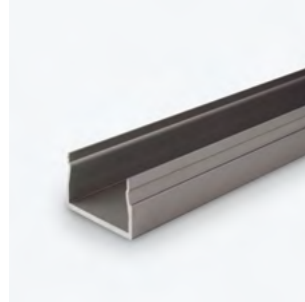
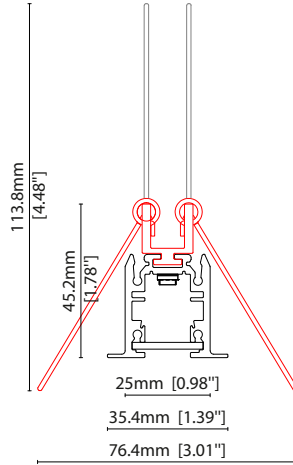
MOUNTING ACCESSORIES

Note: Accessories are to be ordered separately with corresponding code shown below.



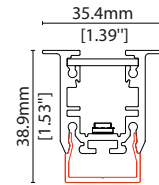
KKS-01

Spring bracket
(allow 2 per metre/40")
Anodised aluminium finish
L31/W35.4/H45.2mm
(L1.22/W1.39/H1.78")

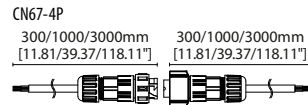


KKCR-01-1000 1000mm (39.37in)
KKCR-01-2000 2000mm (78.74in)
KKCR-01-3000 3000mm (118.11in)

Cable raceway*
anodised aluminium finish
W22/H36.4mm (W0.87/H1.43")
* Cut & drilled to fit on site



POWER FEED



CN67-4P-0300 300mm (11.81in) pair
CN67-4P-1000 1000mm (39.37in) pair
CN67-4P-3000 3000mm (118.11in) pair

IP67

4 PIN male + female (RGB/LEDmix) connector set

EXTERIOR JUNCTION BOXES



KKJB-07

IP67 Slim J-Box
(including type A,B,C,D bushings)



KKJB-07R

Potting resin for IP67 Slim J-Box

KKDC CONTROL



KKDM-06 1-10V

visDIM dimmable sub-controller
(4 x 8A max @ 12-36V)

IP20
Plastic housing
L170/W59/H29mm
(L6.69/W2.32/H1.14in)



KKSC-05 DMX

visDIM dimmable sub-controller
(4 x 5A max @ 12-36V)

IP20
Plastic housing
L170/W53.4/H28mm
(L6.69/W2.10/H1.10in)



KKDL-02 DALI

visDIM dimmable sub-controller
(4 x 8A max @ 12-36V)

IP20
Plastic housing
L170/W59/H29mm
(L6.69/W2.32/H1.14in)



KKDL-03 DALI

visDIM dimmable sub-controller
(4 x 5A max @ 12-36V)

IP20
Plastic housing
L166/W53.4/H23mm
(L6.54/W2.10/H0.91in)

AVAILABLE PSU OPTIONS

Control Mode	PSU (Order Code)	Input Voltage AC	Output Voltage DC	Rated Output Current	Rated Power	Dim %	IP Rating
Switched	CEN-60-24	90-295V	24V	2.5A	60W	-	IP67
	HLG-60H-24	90-305V	24V	2.5A	60W	-	IP67
	HLG-100H-24	90-305V	24V	4.0A	100W	-	IP67
	HLG-150H-24	90-305V	24V	6.3A	150W	-	IP67
	HLG-240H-24	90-305V	24V	10A	240W	-	IP67
0-10V (1-10V)	PWM-40-24	90-305V	24V	1.67A	40W	100-0.15 (100-10)	IP67
	PWM-60-24	90-305V	24V	2.5A	60W	100-0.15 (100-10)	IP67
	PWM-90-24	90-305V	24V	3.67A	90W	100-0.15 (100-10)	IP67
	PWM-120-24	90-305V	24V	5.0A	120W	100-0.15 (100-10)	IP67
DALI	LIN100A1	120-277V	24V	1A per channel	100W	100-0.1	IP66/IP40
DMX RGB	LIN100A1	120-277V	24V	1.33A per channel	100W	100-0.1	IP66/IP40
DMX RGBW	LIN100A1	120-277A	24V	1A per channel	100W	100-0.1	IP66/IP40

Flicker Free Options - Combination of PSU+ sub-controller

Control Mode	PSU (Order Code)	Sub-controller (Order Code)	Input Voltage AC	Output Voltage DC	Rated Output Current	Rated Power	Dim %	IP Rating PSU/ Sub-controller
0-10V or 1-10V	CEN-60-24	KKDM-06	90-295V	24V	2.5A	60W	100-0.9	IP67/IP20
	HLG-60H-24	KKDM-06	90-295V	24V	2.5A	60W	100-0.9	IP67/IP20
	HLG-100H-24	KKDM-06	90-295V	24V	4.0A	100W	100-0.9	IP67/IP20
	HLG-150H-24	KKDM-06	90-295V	24V	6.3A	150W	100-0.9	IP67/IP20
	HLG-240H-24	KKDM-06	90-295V	24V	10.0A	240W	100-0.9	IP67/IP20
DALI	CEN-60-24	KKDL-02/03	90-295V	24V	2.5A	60W	100-0.1	IP67/IP20
	HLG-60H-24	KKDL-02/03	90-305V	24V	2.5A	60W	100-0.1	IP67/IP20
	HLG-100H-24	KKDL-02/03	90-305V	24V	4.0A	100W	100-0.1	IP67/IP20
	HLG-150H-24	KKDL-02/03	90-305V	24V	6.3A	150W	100-0.1	IP67/IP20
	HLG-240H-24	KKDL-02/03	90-305V	24V	10.0A	240W	100-0.1	IP67/IP20
DMX RGB	CEN-60-24	KKSC-05	90-295V	24V	2.5A	60W	100-0.9	IP67/IP20
	HLG-60H-24	KKSC-05	90-305V	24V	2.5A	60W	100-0.9	IP67/IP20
	HLG-100H-24	KKSC-05	90-305V	24V	4A	100W	100-0.9	IP67/IP20
	HLG-150H-24	KKSC-05	90-305V	24V	6.3A	150W	100-0.9	IP67/IP20
	HLG-240H-24	KKSC-05	90-305V	24V	10.0A	240W	100-0.9	IP67/IP20

¹ The items shown above cover the most frequently used specification but does not exhaust the possible options

² PSU and/or driver can be chosen from the table, or KKDC may recommend the best option upon receipt of the controls requirement and installation environment

³ Electrical shop drawing will include detailed information of PSU and relevant control drivers

⁴ Cut sheets are available on the controls section of www.kkdc.lighting or upon request