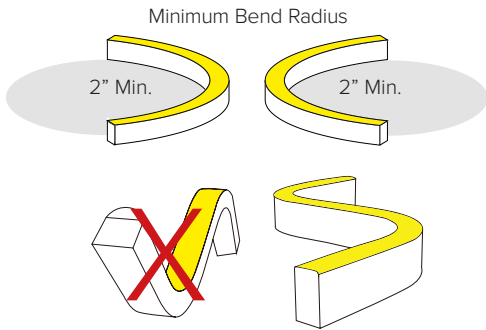
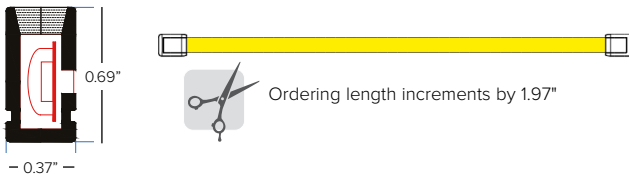


### KEY FEATURES

- Energy efficient LED flexible light strip for continuous constant color changing in linear applications
- Extremely flexible and adjustable lengths for varied architectural applications.
- Available as side-bend quadrate profile for curved applications.
- Manufactured to specified lengths with factory attached end preps and various connector options for project requirements and efficient power configurations.
- Max continuous length: up to 20' per run (4.0W/ft)
- Multiple dimming options available.



### DIMENSIONAL DRAWINGS



### DETAILS

- Spacing** 0.33" OC LED Spacing
- LEDs** 36 LEDs per foot
- Wattage** 4.0W/ft
- Color Temp** Red 630nm, Green 530nm, Blue 470nm
- End Preps** Factory attached end preps available (See Page 2).
- Field Cuts** See page 2 for manufacturer cut zones.
- Mounting** Mounting clip or aluminum mounting channel options.
- Lens Options** Extruded Silicone with Milky White diffusion lens with 113° visibility.
- Installation** Factory manufactured lengths with 12" IP65 connection lead with 12" power feed. To be completed with clip or channel mountings. Ordering lengths increments by 1.97". Minimum bend diameter 2in.
- Power Supply** Listed Class 2 output, 24V DC power supply required
- Certifications** cULus Class 2 Listed  
Tested in accordance with LM-79-08  
Energy efficient for California installations.
- Compliance** ROHS compliant  
MRI Safe, driver to be mounted outside of MRI room. To be use with plastic or aluminum profiles only. To be installed with adhesive or MRI safe hardware only, no factory provided mounting hardware to be used.
- Warranty** 5 year warranty

### FIXTURE DATA

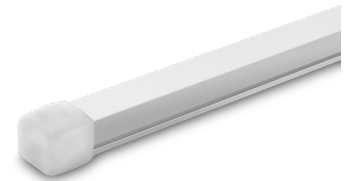
| Model         | Efficacy*<br>Lm/Wt | Lm/Ft | Wt/Ft |
|---------------|--------------------|-------|-------|
| SIDE Flex RGB | 6.53               | 26.1  | 4.0   |

\* Meets Title 24 High efficacy rating.

### LED DATA

| Model       | Wt/LED | Viewing Angle | Lifespan at 90% drive |
|-------------|--------|---------------|-----------------------|
| RGB 4.0W/ft | 0.11W  | 114°          | 50,000hrs             |

\* LEDs operating at 90% of LED manufacturers maximum current rating.



Translucent Silicone Leads and End Caps

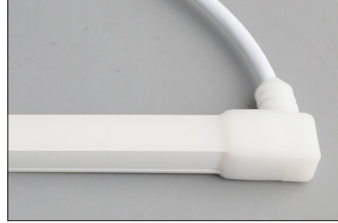
| PRODUCT CODE         | PROFILE        | WATTAGE       | IP RATING        | COLOR TEMP                 | VOLTAGE     | + | END PREP | + | MOUNTING | + | POWER SUPPLY |
|----------------------|----------------|---------------|------------------|----------------------------|-------------|---|----------|---|----------|---|--------------|
| DFA — DuraFlex Arch™ | SB — SIDE Flex | 04 — 4.0 W/ft | O — Outdoor IP65 | RGB — Red<br>Green<br>Blue | 24 — 24 VDC |   |          |   |          |   |              |

**REQUIRED END PREPS**

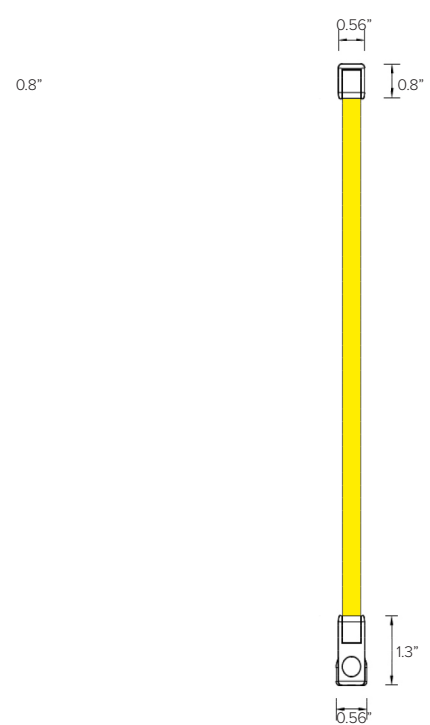
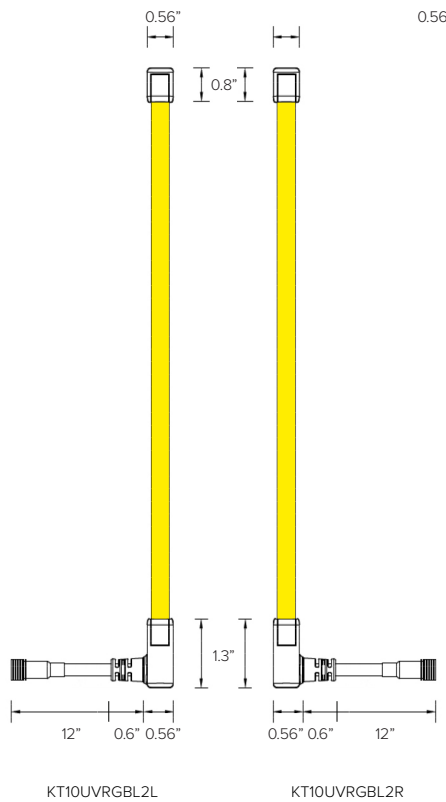
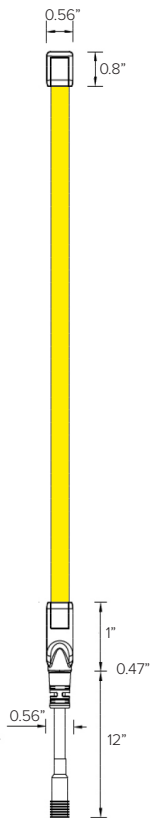
**A**



**B**



**C**



**KT10UVRGBL1**

SIDE Flex straight end feed. Factory attached translucent silicone lead with two piece 12" wire, with IP65 quick disconnect at one end of product and dead end cap at other end. Lead wire/dead end allows for connection to power at lead end and field trim of DuraFlex product at the other end. Completed with translucent silicone factory attached end cap.

**KT10UVRGBL2L (Left)  
KT10UVRGBL2R (Right)**

SIDE Flex side feed. Factory attached translucent silicone lead with two piece 12" wire, with IP65 quick disconnect at one end of product and dead end cap at other end. Lead wire/dead end allows for connection to power at lead end and field trim of DuraFlex product at the other end. Completed with translucent silicone factory attached end cap.

**KT10UVRGBL3**

SIDE Flex bottom feed. Factory attached translucent silicone lead with two piece 12" wire, with IP65 quick disconnect at one end of product and dead end cap at other end. Lead wire/dead end allows for connection to power at lead end and field trim of DuraFlex product at the other end. Completed with translucent silicone factory attached end cap.

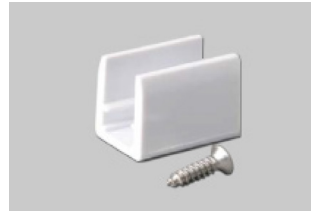
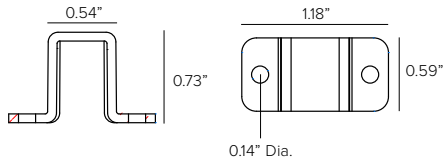
**Mounting Accessories**



KT10UVS1

**KT10UVS1**

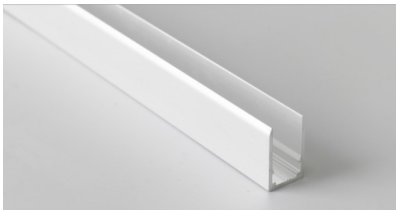
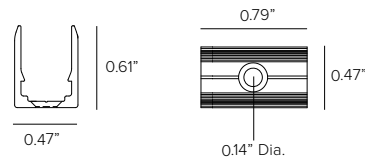
SIDE Flex Transparent clips kit. Includes 5 clips and 10 screws.



KT10UVC1

**KT10UVC1**

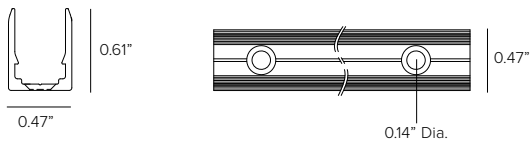
SIDE Flex Bottom fixing clips. Includes 5 clips and 5 screws.



KT10UVP1

**KT10UVP1**

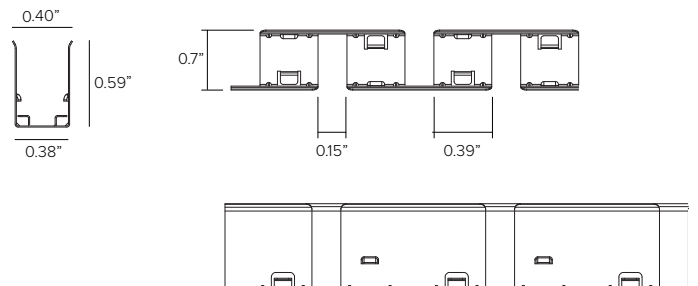
SIDE Flex 1 pcs of aluminum channel length 38in and 2 screws (termination end prep rest outside of the channel).



KTUVFP2

**KTUVFP2**

SIDE Flexible stamped stainless steel profile secured with screws, 1ea provided per foot. Available in 1ft lengths.



| Power Supply (REQUIRED) | Type   | Wattage | Input/Output Voltage | Dimmable                 | IP Rating           | Output     | Dimensions                  |
|-------------------------|--|---------|----------------------|--------------------------|---------------------|------------|-----------------------------|
| <b>DEDDX1001244CDMX</b> | ELECTRONIC ADDRESSABLE DMX DRIVER  | 100W    | 120-277V / 24V       | DMX CONTROL<br>4 CHANNEL | NEMA3R<br>ENCLOSURE | UL CLASS 2 | 12" x 12" x 4" <sup>1</sup> |
| <b>DEDDX2002244CDMX</b> | ELECTRONIC ADDRESSABLE DMX DRIVER  | 2X100W  | 120-277V / 24V       | DMX CONTROL<br>4 CHANNEL | NEMA3R<br>ENCLOSURE | UL CLASS 2 | 12" x 12" x 4" <sup>1</sup> |
| <b>DEDD100DMX</b>       | ELECTRONIC ADDRESSABLE DMX DRIVER<br>STANDALONE, <b>UL LISTED ENCLOSURE<br/>PROVIDED BY OTHERS</b> | 100W    | 120-277V / 24V       | DMX DIMMING<br>4 CHANNEL | N/A                 | UR CLASS 2 | 9.06" x 3.15" x 1.18"       |

<sup>1</sup> Dimensions include enclosure with mounting bracket.

\* Constant voltage drivers 50/60HZ, voltage regulated with short circuit protection. Operating temperature -40 C- 80° C

\* Installation of power supply must be compliant to Class 2 installation standards. Refer to NEC and local building code requirements.

## Controllers:

| Part No.              | Type  | Application | Voltage   | Listing | Dimensions           | Channels | Zones | Scenes |
|-----------------------|---|-------------|---|---------|----------------------|----------|-------|--------|
| <b>SWITCH20</b>       | RGBW touch DMX512 wall control keypad with sensitive glass touch panel, white finish.   | Indoor      | 12-24V DC   | UL      | 4.7" x 3.0" x 1.2"   | 12       | 3     | 1      |
| <b>TGDMXSLESAU9</b>   | Stand-alone DMX 1/2 Universe Programmable Controller with Easy to Use Software Interface  | Indoor Only | 5.5V DC   | ETL, UL | 5.3"W x 5.5"H x 1.9D | 256      | 1     | 20     |
| <b>TGDMXSLESAU11</b>  | Nicolaudie Slesa smart DMX interface, 2 DMX 512 universes, intuitive backlit keyboard programmable controller with easy to use software interface.  | Indoor      | 5VDC<br>120V AC<br>(Plug in power supply included)    | ETL     | 6.3" x 3.6" x 1.8"   | 1024     | 5     | 99     |
| <b>TGDMXSTICKDE3B</b> | Nicolaudie intelligent wall control keypad with glass touch sensitive graphic display, stand-alone DMX 512, 2 universe programmable controller with easy to use software interface. Black finish. | Indoor      | 6-7V DC<br>120V AC<br>(Plug in power supply included) | ETL     | 5.8" x 4.2" x 0.5"   | 1024     | 10    | 500    |
| <b>TGDMXSTICKDE3W</b> | Nicolaudie intelligent control keypad with glass touch sensitive graphic display, stand-alone DMX 512, 2 universe programmable controller with easy to use software interface. White finish.      | Indoor      | 6-7V DC<br>120V AC<br>(Plug in power supply included) | ETL     | 5.8" x 4.2" x 0.5"   | 1024     | 10    | 500    |



SWITCH20



TGDMXSLESAU9



TGDMXSLESAU11



TGDMXSTICKDE3

## MAXIMUM INTERCONNECTED TAPE LENGTH PER DRIVER

| Fixture Wattage | Driver Wattage |      |      |      |          |          |      |          |
|-----------------|----------------|------|------|------|----------|----------|------|----------|
|                 | 40W            | 60W  | 96W  | 90W  | 2X90W    | 3X90W    | 100W | 2X100    |
| 4W              | 8FT            | 12FT | 19FT | 18FT | (2) 18FT | (3) 18FT | 20FT | (2) 20FT |

### Photometry

| SIDE ARCH      |           | POLAR GRAPH |
|----------------|-----------|-------------|
| Fixture Power  | 4W        |             |
| Fixture Output | 8.8Lm/ft. |             |
| Kelvin Temp    | Red       |             |
| IMax           | 340cd/klm |             |
| Efficacy       | 2.2 Lm/W  |             |

| SIDE ARCH      |            | POLAR GRAPH |
|----------------|------------|-------------|
| Fixture Power  | 4W         |             |
| Fixture Output | 12.7Lm/ft. |             |
| Kelvin Temp    | Green      |             |
| IMax           | 340cd/klm  |             |
| Efficacy       | 3.2 Lm/W   |             |

| SIDE ARCH      |           | POLAR GRAPH |
|----------------|-----------|-------------|
| Fixture Power  | 4W        |             |
| Fixture Output | 3.6Lm/ft. |             |
| Kelvin Temp    | Blue      |             |
| IMax           | 340cd/klm |             |
| Efficacy       | 1.0 Lm/W  |             |

| SIDE ARCH      |            | POLAR GRAPH |
|----------------|------------|-------------|
| Fixture Power  | 4W         |             |
| Fixture Output | 26.1Lm/ft. |             |
| Kelvin Temp    | RGB        |             |
| IMax           | 340cd/klm  |             |
| Efficacy       | 6.5 Lm/W   |             |