

LEDA Outdoor
3-713-2xx

oxygen

FIXTURE TYPE _____

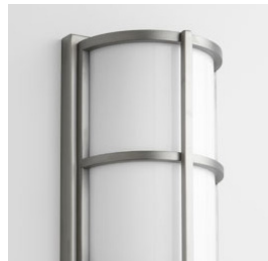
LOCATION _____

PROJECT _____

DATE _____



-22 Oiled Bronze



-24 Satin Nickel

LIGHT SOURCE 2 x 10.1W LED, 3000K, CRI 90

LUMINAIRE POWER 24.1W at 120V

RATED LIFE 60000 hr RL

OPTIONAL COLOR TEMPERATURES 2700K, 3500K, 4000K

LUMEN OUTPUT Delivered: 1347 lm (LM-79)

INPUT VOLTAGE 120V to 277V AC, 50/60Hz

DRIVER OUTPUT 700mA, 29.4W max power

DIMMING TRIAC and ELV dimming at 120V AC; 0-10V dimming, 100% to 1% current output

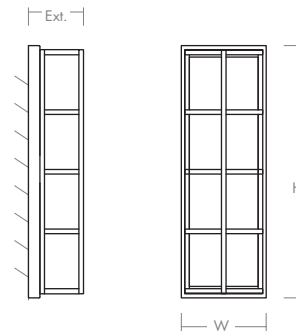
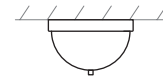
CONSTRUCTION Stainless Steel and Acrylic

DIFFUSER -2 Matte White Acrylic

FINISHES Oiled Bronze (-22), Satin Nickel (-24)

MOUNTING 4" Octagonal J-Box
(Installer must provide a bead of caulk between fixture housing and mounting surface)

STANDARDS UL Wet listed, Conforms to UL STD 1598, Certified CAN/CSA STD C22.2 No 250.0.



DIMENSIONS

W: 7.25"
H: 21.75"
Ext: 4.75"
M.C: 10.81" From top of fixture

Order example for standard fixture:

3-713-224 (x- Voltage - xxx-Sequence # - x-Diffuser - xx-Finish)

3: 120V to 277V

Order example for optional color temperatures: **3-713-27224**

27: 2700K, **35:** 3500K, **40:** 4000K

